

Paper craft models need paper with a certain stiffness. We recommend Canon Matte Photo Paper(MP-101).

For Origami and Chiyogami, we recommend Canon Super White Paper.

To print out the file with Adobe Reader, click on [Properties] in the print window and then click on [Page Settings]. For details, check the printer settings given below.

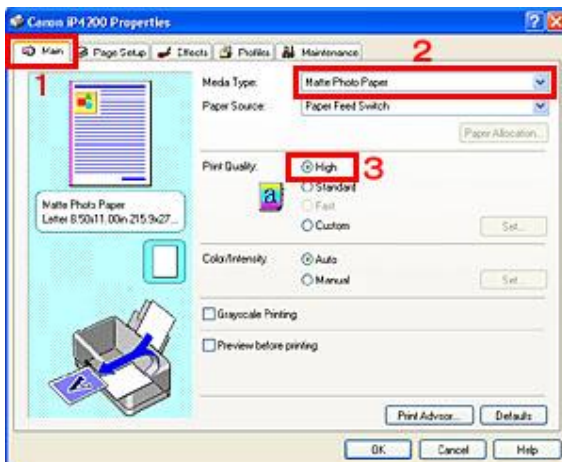
Note: With Adobe Reader, in order to print out with the correct layout, you need to go into [Page Handling] and turn OFF [Page Scaling].



STEP 1 :

Set the printer. From the [File] menu, select [Print]. In the dialog box, under [Printer], check that the printer you are using appears in the [Name] field.

Then, click on [Properties].



STEP 2 :

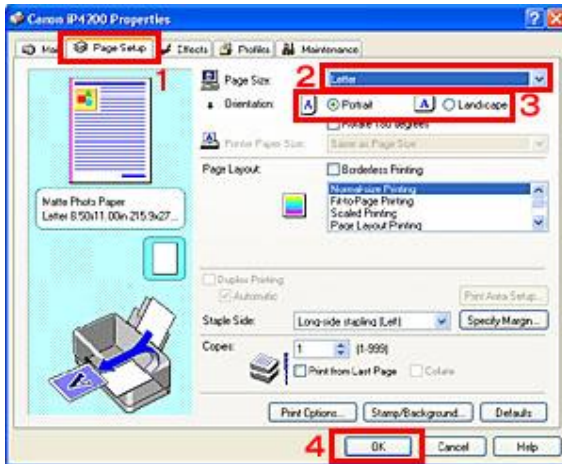
The [Properties] dialog box appears.

Click on the [Main] tab and, from the [Media Type] pull down menu, select the type of paper you are going to use.

We recommend using paper such as Matte Photo Paper (MP-101) and High-Resolution Paper (HR-101).

If you are using Super White Paper for Origami, set the [Media Type] to plain paper.

Under [Print Quality], select High.

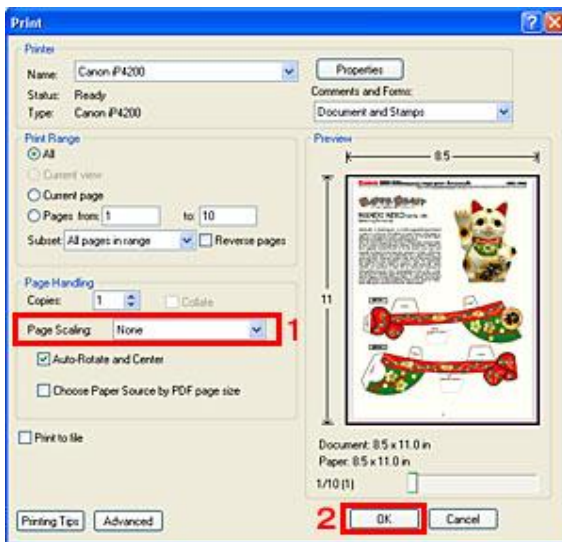


STEP 3 :

Click [Page Setup].

Remember to set [Paper Size] and [Orientation] as required.

Click [OK] to complete the Properties settings.



STEP 4 :

Set [Page Scaling] under [Page Handling] to [None].

This completes the settings for printing.

Click [OK] to start printing.