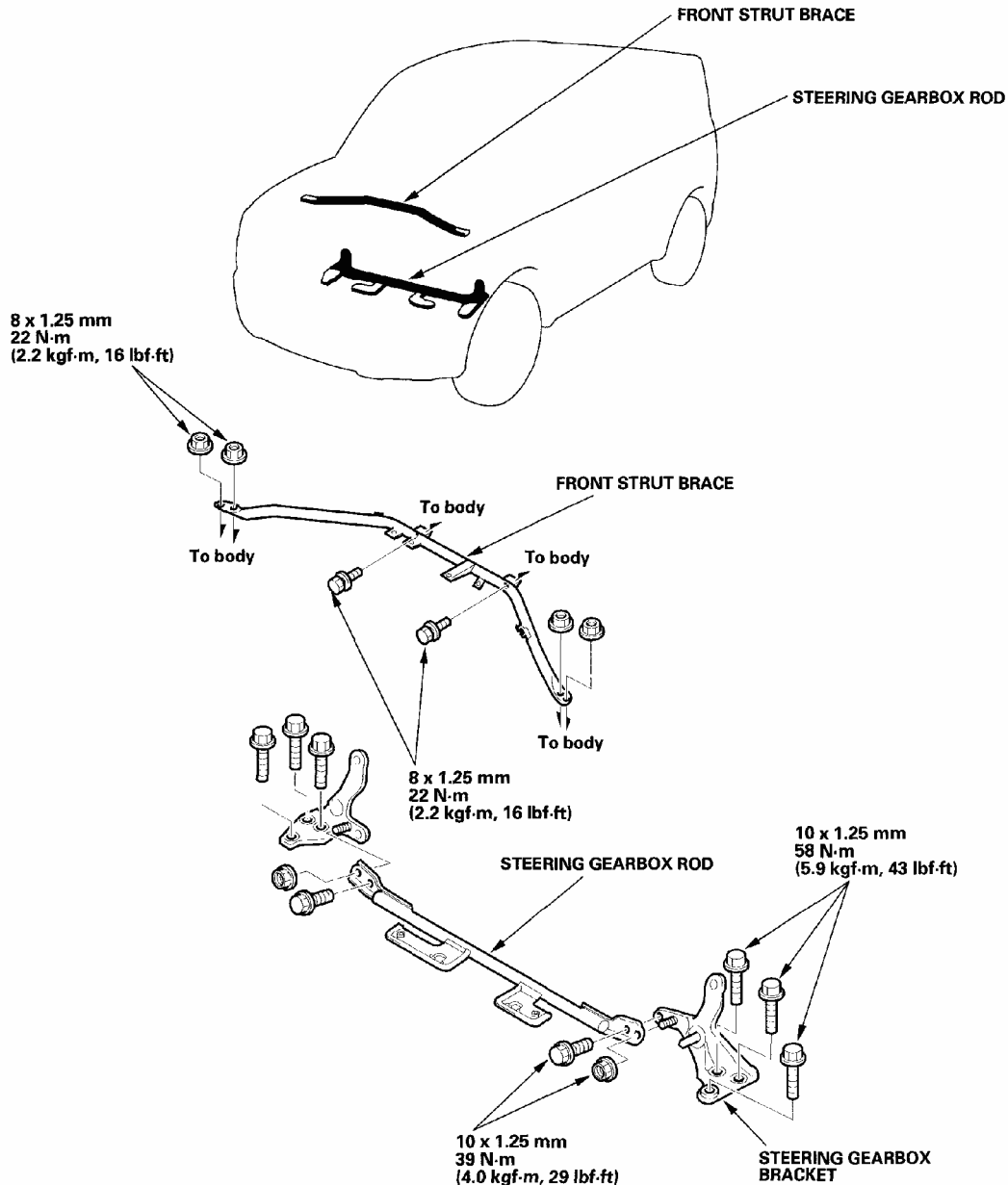


2003-06 ACCESSORIES & EQUIPMENT

Frame - Element

FRAME BRACE REPLACEMENT

Front Strut Brace and Steering Gearbox Rod Torque



G03679566

Fig. 1: Replacing Frame Brace & Torque Specifications
Courtesy of AMERICAN HONDA MOTOR CO., INC.

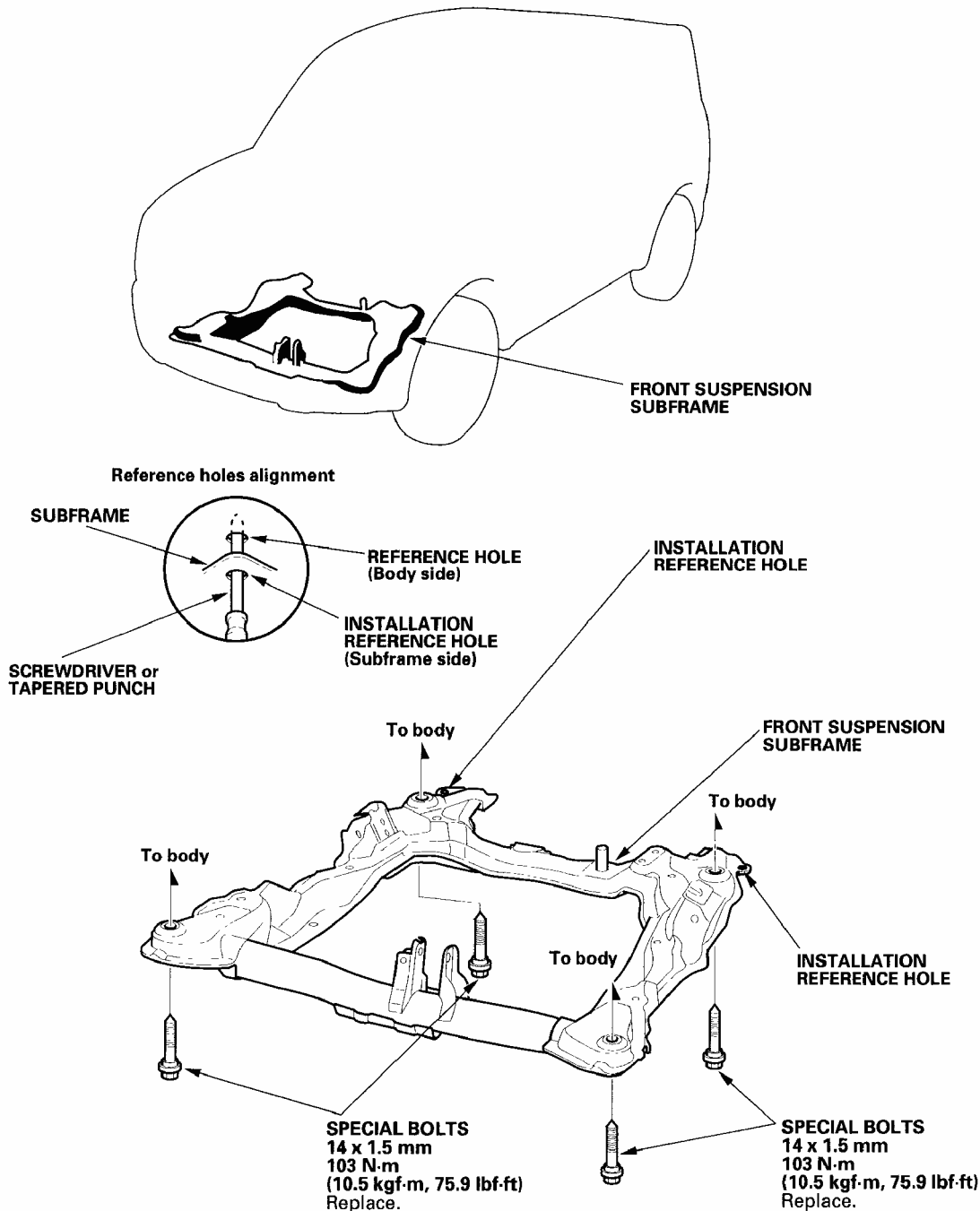
SUBFRAME REPLACEMENT

2004 Honda Element DX

2003-06 ACCESSORIES & EQUIPMENT Frame - Element

FRONT SUBFRAME TORQUE

NOTE: After loosening the subframe mounting bolts, be sure to replace them with new ones.



G03679567

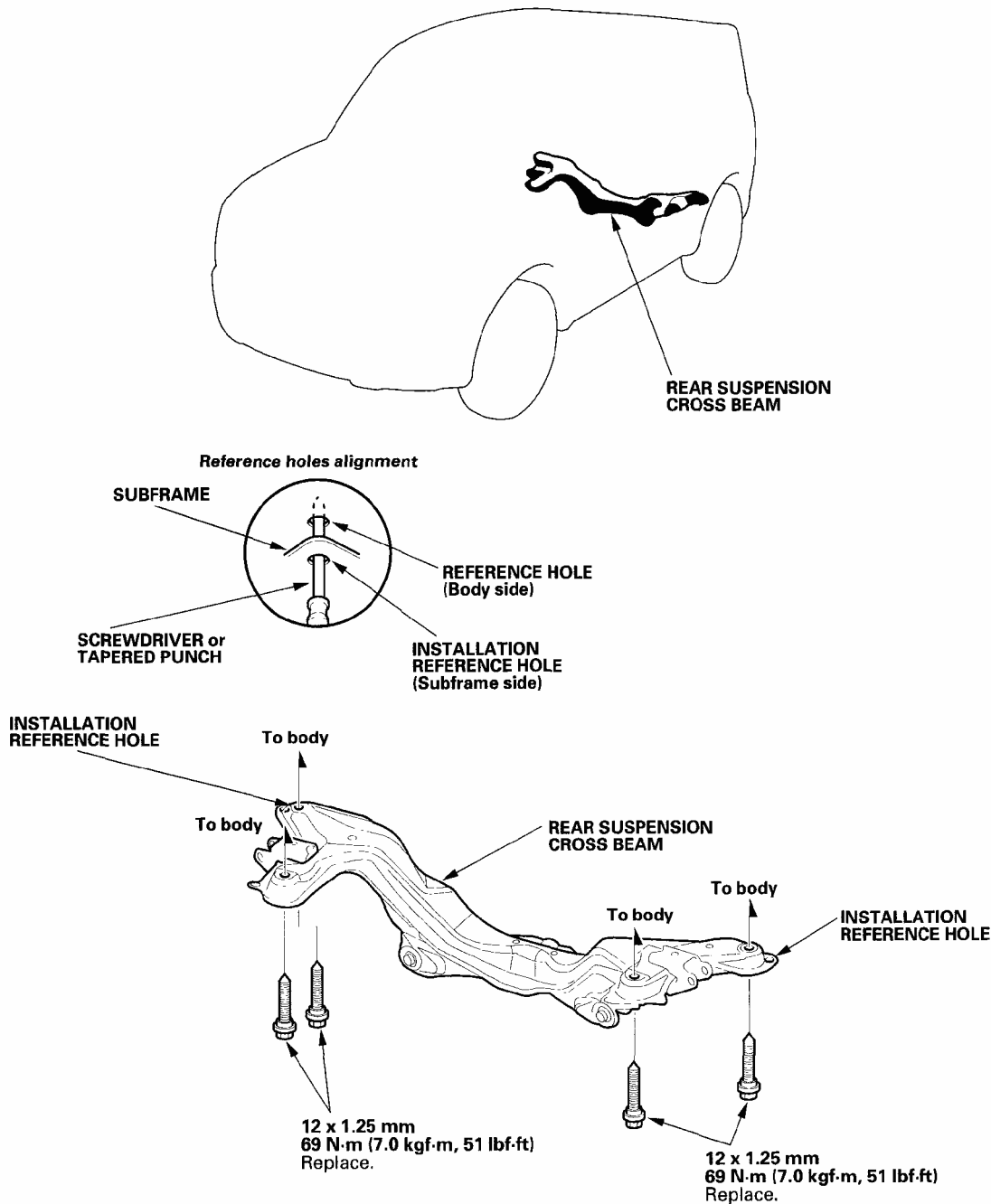
Fig. 2: Replacing Front Subframe & Torque Specifications
Courtesy of AMERICAN HONDA MOTOR CO., INC.

REAR SUBFRAME TORQUE

2004 Honda Element DX

2003-06 ACCESSORIES & EQUIPMENT Frame - Element

NOTE: After loosening the subframe mounting bolts, be sure to replace them with new ones.



G03679568

Fig. 3: Replacing Rear Subframe & Torque Specifications
Courtesy of AMERICAN HONDA MOTOR CO., INC.

FRAME REPAIR CHART

2004 Honda Element DX

2003-06 ACCESSORIES & EQUIPMENT Frame - Element

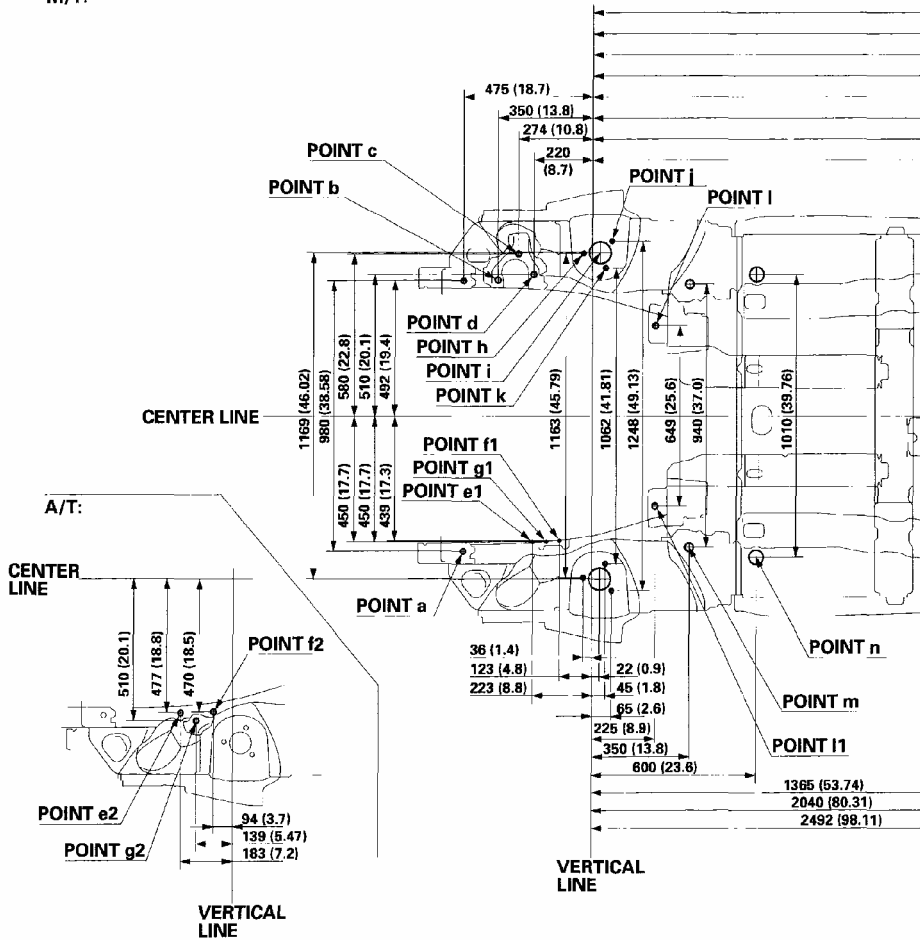
Top View

Unit: mm (in.)

ø: Inner diameter

- | | | | |
|----|---------------------------------------|----|---------------------------------------|
| a | For front subframe ø16 (0.63) | g1 | For M/T transmission mount ø13 (0.51) |
| b | For engine mount ø13 (0.51) | g2 | For A/T transmission mount ø13 (0.51) |
| c | For engine mount ø13 (0.51) | h | For damper mount ø11.5 (0.45) |
| d | For engine mount ø13 (0.51) | i | Front damper center ø78 (3.07) |
| e1 | For M/T transmission mount ø13 (0.51) | j | For damper mount ø11.5 (0.45) |
| e2 | For A/T transmission mount ø13 (0.51) | k | For damper mount ø11.5 (0.45) |
| f1 | For M/T transmission mount ø13 (0.51) | l | For front subframe ø16 (0.63) |
| f2 | For A/T transmission mount ø13 (0.51) | l1 | For front subframe ø16 (0.63) |

M/T:



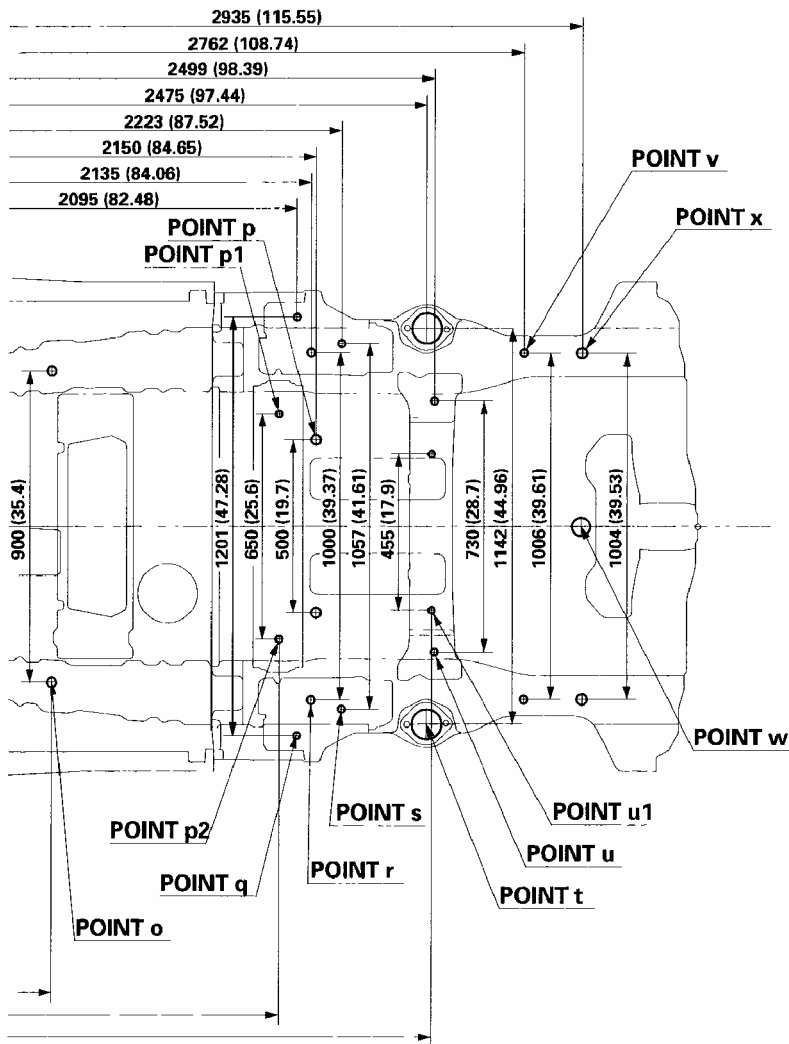
G03679569

Fig. 4: Identifying Frame Repair Chart (1 Of 2)
 Courtesy of AMERICAN HONDA MOTOR CO., INC.

2004 Honda Element DX

2003-06 ACCESSORIES & EQUIPMENT Frame - Element

- | | |
|---|--|
| <p>m Locating hole $\varnothing 27.4$ (1.08)</p> <p>n Locating hole $\varnothing 50$ (1.97)</p> <p>o Locating hole $\varnothing 25$ (0.98)</p> <p>p Locating hole $\varnothing 25$ (0.98)</p> <p>p1 Locating hole $\varnothing 13$ (0.51) Right side</p> <p>p2 Locating hole $\varnothing 15$ (0.59) Left side</p> <p>q For trailing arm $\varnothing 14$ (0.55)</p> <p>r Locating hole $\varnothing 15$ (0.59)</p> | <p>s For trailing arm $\varnothing 14$ (0.55)</p> <p>t Rear damper center $\varnothing 78.6$ (3.09)</p> <p>u For rear cross beam $\varnothing 15$ (0.59)</p> <p>u1 Locating hole $\varnothing 15$ (0.59)</p> <p>v For rear cross beam $\varnothing 15$ (0.59)</p> <p>w Locating hole $\varnothing 50$ (1.97)</p> <p>x Locating hole $\varnothing 25$ (0.98)</p> |
|---|--|



G03679570

Fig. 5: Identifying Frame Repair Chart (2 Of 2)
 Courtesy of AMERICAN HONDA MOTOR CO., INC.

SIDE VIEW

2004 Honda Element DX

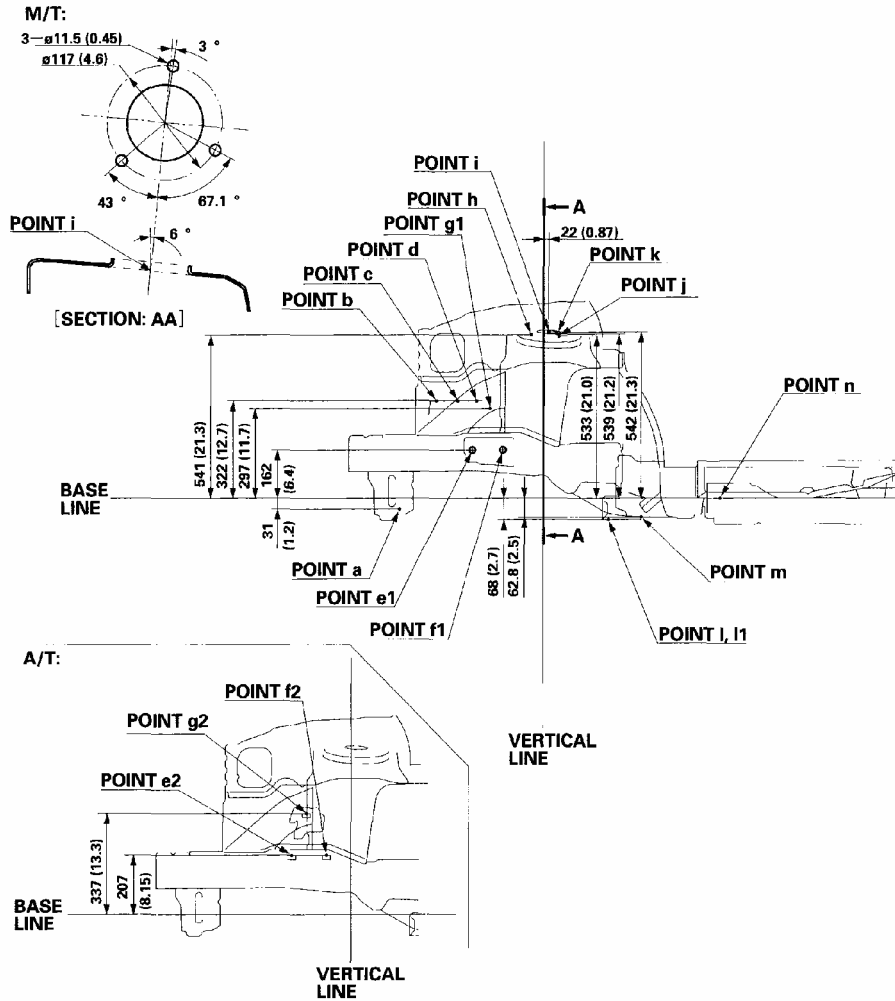
2003-06 ACCESSORIES & EQUIPMENT Frame - Element

Side View

Unit: mm (in.)

ø: Inner diameter

- | | | | |
|----|---------------------------------------|----|---------------------------------------|
| a | For front subframe ø16 (0.63) | g1 | For M/T transmission mount ø13 (0.51) |
| b | For engine mount ø13 (0.51) | g2 | For A/T transmission mount ø13 (0.51) |
| c | For engine mount ø13 (0.51) | h | For damper mount ø11.5 (0.45) |
| d | For engine mount ø13 (0.51) | i | Front damper center ø78 (3.07) |
| e1 | For M/T transmission mount ø13 (0.51) | j | For damper mount ø11.5 (0.45) |
| e2 | For A/T transmission mount ø13 (0.51) | k | For damper mount ø11.5 (0.45) |
| f1 | For M/T transmission mount ø13 (0.51) | l | For front subframe ø16 (0.63) |
| f2 | For A/T transmission mount ø13 (0.51) | l1 | For front subframe ø16 (0.63) |



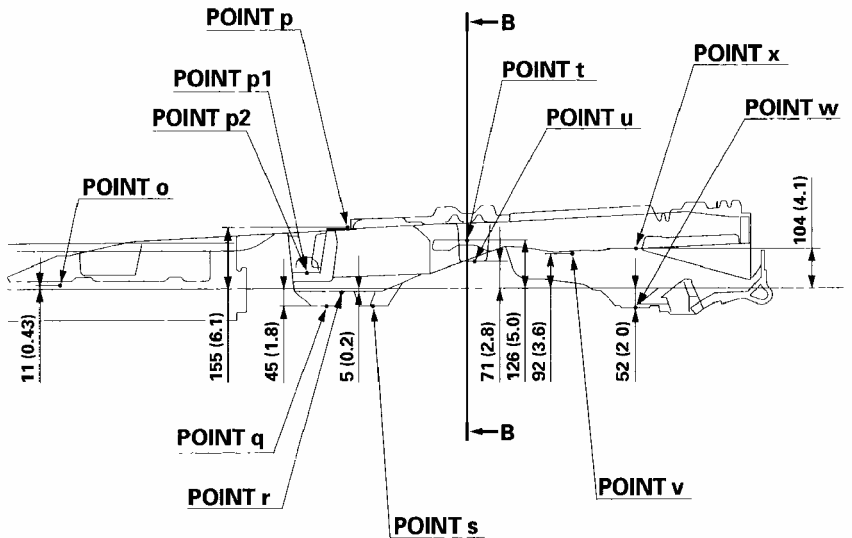
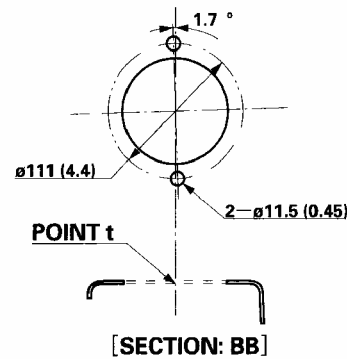
G03679571

Fig. 6: Identifying Frame Repair Chart Side View (1 Of 2)
 Courtesy of AMERICAN HONDA MOTOR CO., INC.

2004 Honda Element DX

2003-06 ACCESSORIES & EQUIPMENT Frame - Element

- | | | | |
|----|--|----|--|
| m | Locating hole $\varnothing 27.4$ (1.08) | s | For trailing arm $\varnothing 14$ (0.55) |
| n | Locating hole $\varnothing 50$ (1.97) | t | Rear damper center $\varnothing 78.6$ (3.09) |
| o | Locating hole $\varnothing 25$ (0.98) | u | For rear cross beam $\varnothing 15$ (0.59) |
| p | Locating hole $\varnothing 25$ (0.98) | u1 | Locating hole $\varnothing 15$ (0.59) |
| p1 | Locating hole $\varnothing 13$ (0.51) Right side | v | For rear cross beam $\varnothing 15$ (0.59) |
| p2 | Locating hole $\varnothing 15$ (0.59) Left side | w | Locating hole $\varnothing 50$ (1.97) |
| q | For trailing arm $\varnothing 14$ (0.55) | x | Locating hole $\varnothing 25$ (0.98) |
| r | Locating hole $\varnothing 15$ (0.59) | | |



G03679572

Fig. 7: Identifying Frame Repair Chart Side View (2 Of 2)
 Courtesy of AMERICAN HONDA MOTOR CO., INC.