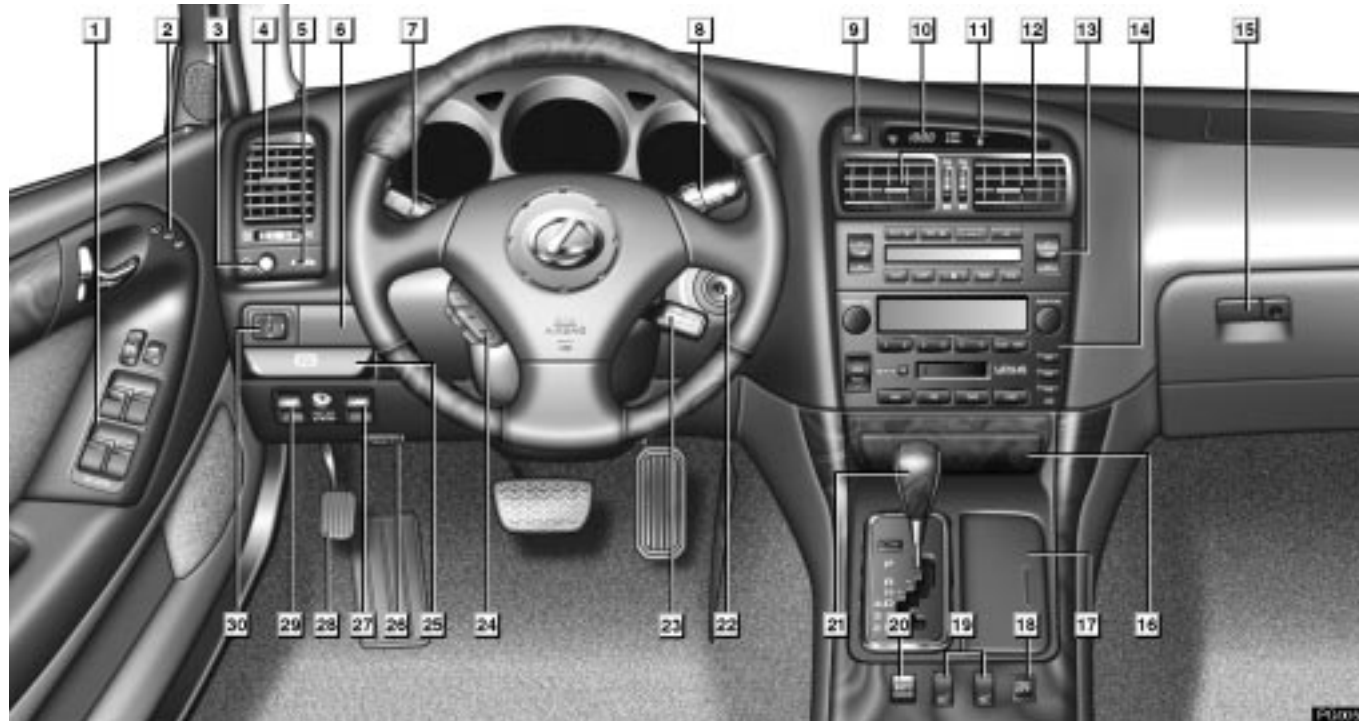


INSTRUMENT PANEL

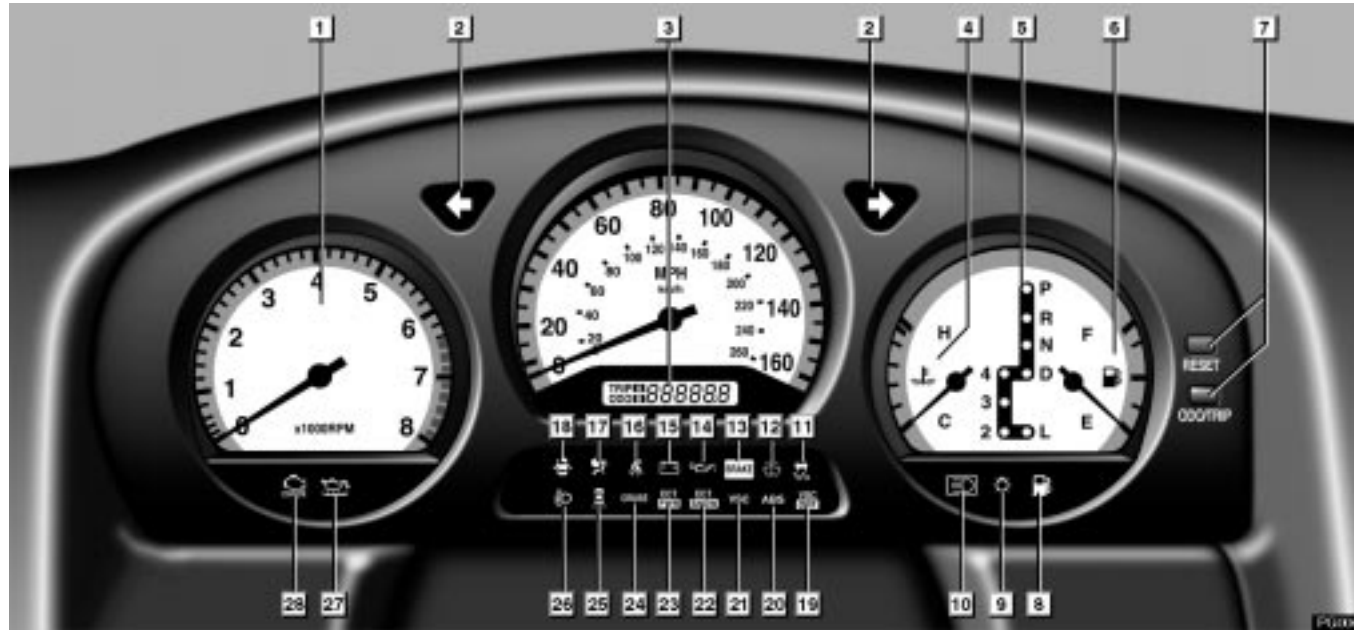


PICTORIAL INDEX

	<i>Page</i>		<i>Page</i>
1	<i>Door lock switch and power window switches</i>	16	<i>Ashtray</i>
	20, 32		55
2	<i>Driving position memory switch</i>	17	<i>Cup holders</i>
	127		60
3	<i>Instrument panel light control</i>	18	<i>Vehicle skid control system OFF switch</i>
	50		193
4	<i>Side vents</i>	19	<i>Seat heater switches</i>
	144		35
5	<i>Security indicator light</i>	20	<i>Driving pattern selector switch</i>
	130		179
6	<i>Coin box</i>	21	<i>Automatic transmission selector lever</i>
	61		179
7	<i>Headlight, turn signal and fog light switch</i>	22	<i>Ignition switch</i>
	24, 26, 27		176
8	<i>Wiper and washer switch</i>	23	<i>Cruise control switch</i>
	28		189
9	<i>Emergency flasher switch</i>	24	<i>Steering pad switch</i>
	35		166
10	<i>Clock</i>	25	<i>Parking brake release lever</i>
	54		177
11	<i>Front passenger's seat belt reminder light</i>	26	<i>Hood lock release lever</i>
	43		66
12	<i>Center vents</i>	27	<i>Trunk lid opener</i>
	144		67
13	<i>Automatic air conditioning controls</i>	28	<i>Parking brake</i>
	134		177
14	<i>Car audio</i>	29	<i>Fuel filler door opener</i>
	148		69
15	<i>Glove box/CD automatic changer</i>	30	<i>Power rear view mirror control switch</i>
	57/161		81

For detailed information, refer to the description given in each section.

INSTRUMENT CLUSTER (GS430 sold in U. S. A.)

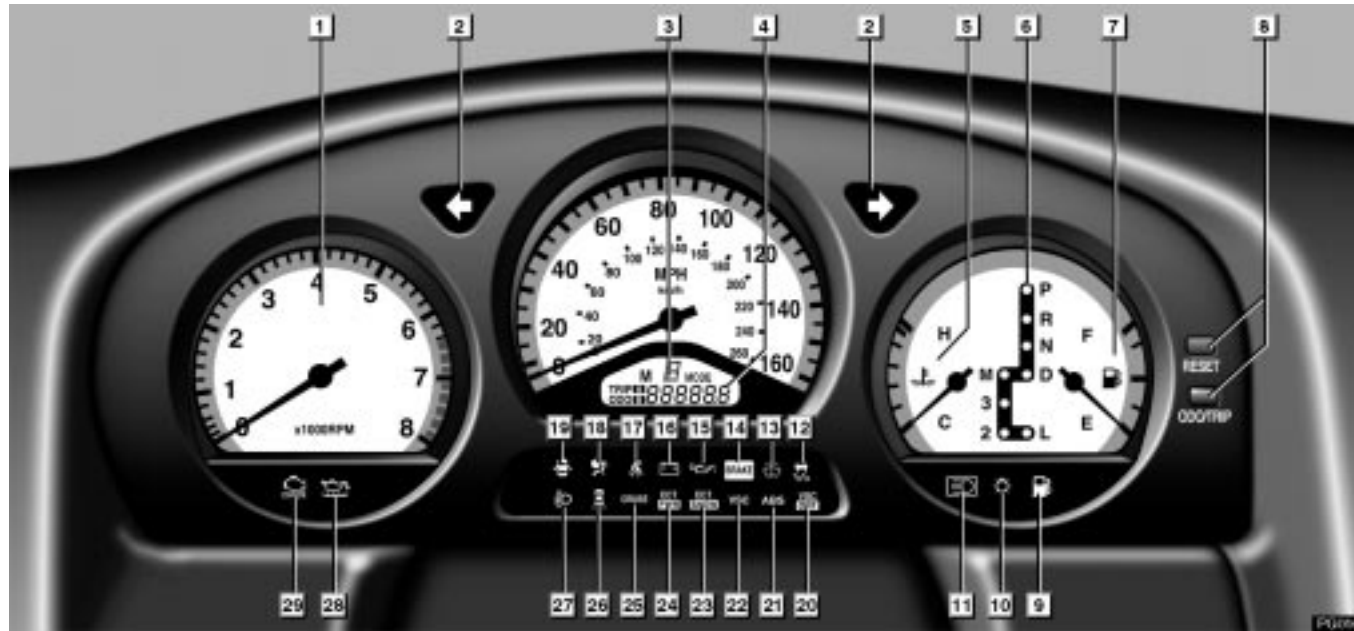


PICTORIAL INDEX

	<i>Page</i>		<i>Page</i>
1	<i>Tachometer</i>	16	<i>Driver's seat belt reminder light</i>
	40		43
2	<i>Turn signal indicator light</i>	17	<i>SRS warning light</i>
	26		44
3	<i>Odometer and trip meter</i>	18	<i>Open door warning light</i>
	40		47
4	<i>Engine coolant temperature gauge</i>	19	<i>Vehicle skid control system</i>
	39		<i>OFF indicator light</i>
5	<i>Automatic transmission indicator lights</i>		193
	179	20	<i>Anti-lock brake system warning light</i>
6	<i>Fuel gauge</i>		46
	38	21	<i>Vehicle skid control system</i>
7	<i>ODO/TRIP, RESET button</i>		<i>warning light</i>
	40		194
8	<i>Low fuel level warning light</i>	22	<i>Snow mode indicator light</i>
	47		188
9	<i>Headlight indicator light</i>	23	<i>Power mode indicator light</i>
	24		188
10	<i>Headlight high beam indicator light</i>	24	<i>Cruise control indicator light</i>
	26		189
11	<i>Slip indicator light</i>	25	<i>Rear light failure warning light</i>
	192, 193		47
12	<i>Low washer fluid warning light</i>	26	<i>Automatic headlight leveling system</i>
	47		<i>warning light</i>
13	<i>Brake system warning light</i>		26
	42	27	<i>Low engine oil level warning light</i>
14	<i>Low oil pressure warning light</i>		45
	45	28	<i>Malfunction indicator lamp</i>
15	<i>Discharge warning light</i>		46
	44		

For detailed information, refer to the description given in each section.

INSTRUMENT CLUSTER (GS300 sold in U. S. A.)

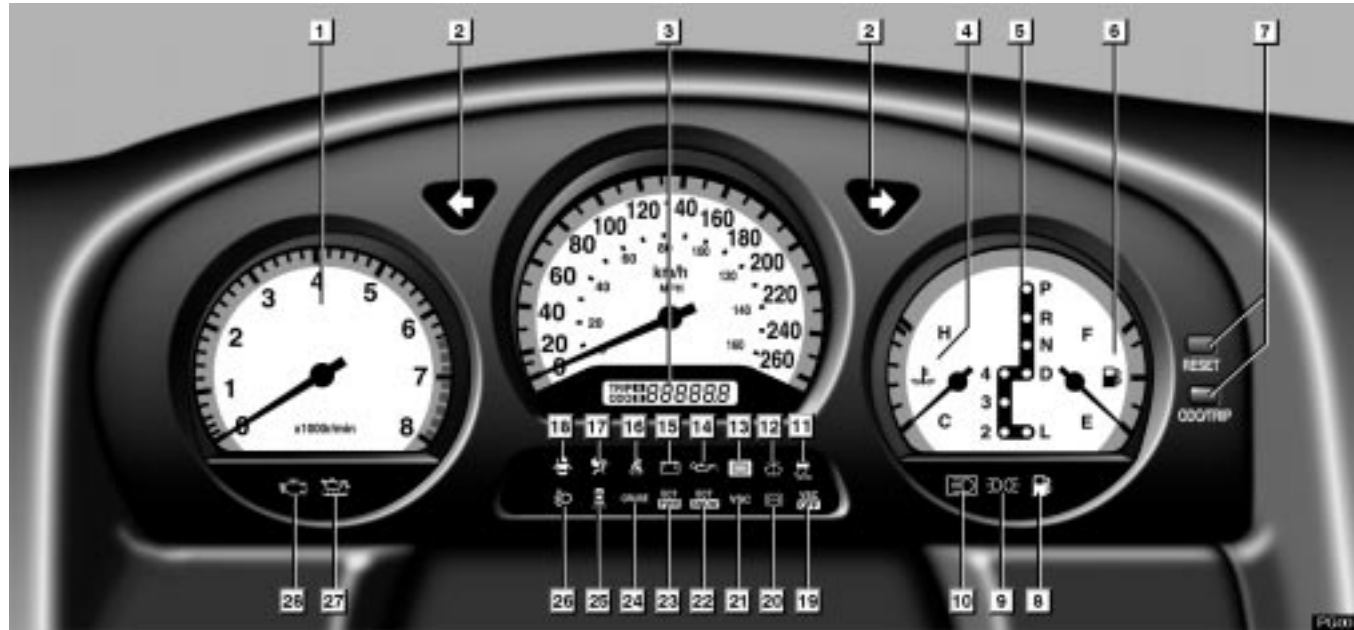


PICTORIAL INDEX

	<i>Page</i>		<i>Page</i>
1	<i>Tachometer</i>	16	<i>Discharge warning light</i>
	40		44
2	<i>Turn signal indicator light</i>	17	<i>Driver's seat belt reminder light</i>
	26		43
3	<i>Shift position indicator for manual control</i>	18	<i>SRS warning light</i>
	183		44
4	<i>Odometer and trip meter</i>	19	<i>Open door warning light</i>
	40		47
5	<i>Engine coolant temperature gauge</i>	20	<i>Vehicle skid control system</i>
	39		<i>OFF indicator light</i>
6	<i>Automatic transmission indicator lights</i>		193
	179	21	<i>Anti-lock brake system warning light</i>
7	<i>Fuel gauge</i>		46
	38	22	<i>Vehicle skid control system</i>
8	<i>ODO/TRIP, RESET button</i>		<i>warning light</i>
	40		194
9	<i>Low fuel level warning light</i>	23	<i>Snow mode indicator light</i>
	47		188
10	<i>Headlight indicator light</i>	24	<i>Power mode indicator light</i>
	24		188
11	<i>Headlight high beam indicator light</i>	25	<i>Cruise control indicator light</i>
	26		189
12	<i>Slip indicator light</i>	26	<i>Rear light failure warning light</i>
	192, 193		47
13	<i>Low washer fluid warning light</i>	27	<i>Automatic headlight leveling system</i>
	47		<i>warning light</i>
14	<i>Brake system warning light</i>		26
	42	28	<i>Low engine oil level warning light</i>
15	<i>Low oil pressure warning light</i>		45
	45	29	<i>Malfunction indicator lamp</i>
			46

For detailed information, refer to the description given in each section.

INSTRUMENT CLUSTER (GS430 sold in Canada)



PICTORIAL INDEX

	<i>Page</i>		<i>Page</i>
1	<i>Tachometer</i>	16	<i>Driver's seat belt reminder light</i>
	40		43
2	<i>Turn signal indicator light</i>	17	<i>SRS warning light</i>
	26		44
3	<i>Odometer and trip meter</i>	18	<i>Open door warning light</i>
	40		47
4	<i>Engine coolant temperature gauge</i>	19	<i>Vehicle skid control system OFF</i>
	39		<i>indicator light</i>
5	<i>Automatic transmission indicator lights</i>		193
	179	20	<i>Anti-lock brake system warning light</i>
6	<i>Fuel gauge</i>		46
	38	21	<i>Vehicle skid control system</i>
7	<i>ODO/TRIP, RESET button</i>		<i>warning light</i>
	40		194
8	<i>Low fuel level warning light</i>	22	<i>Snow mode indicator light</i>
	47		188
9	<i>Tail light indicator light</i>	23	<i>Power mode indicator light</i>
	24		188
10	<i>Headlight high beam indicator light</i>	24	<i>Cruise control indicator light</i>
	26		189
11	<i>Slip indicator light</i>	25	<i>Rear light failure warning light</i>
	192, 193		47
12	<i>Low washer fluid warning light</i>	26	<i>Automatic headlight leveling system</i>
	47		<i>warning light</i>
13	<i>Brake system warning light</i>		26
	42	27	<i>Low engine oil level warning light</i>
14	<i>Low oil pressure warning light</i>		45
	45	28	<i>Malfunction indicator lamp</i>
15	<i>Discharge warning light</i>		46
	44		

For detailed information, refer to the description given in each section.

INSTRUMENT CLUSTER (GS300 sold in Canada)

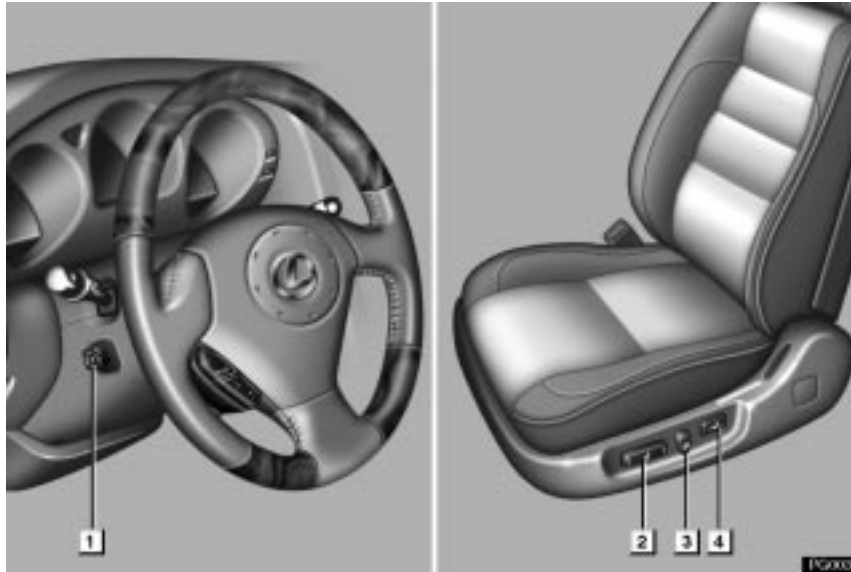


PICTORIAL INDEX

	<i>Page</i>		<i>Page</i>
1	<i>Tachometer</i>	16	<i>Discharge warning light</i>
	40		44
2	<i>Turn signal indicator light</i>	17	<i>Driver's seat belt reminder light</i>
	26		43
3	<i>Shift position indicator for manual control</i>	18	<i>SRS warning light</i>
	183		44
4	<i>Odometer and trip meter</i>	19	<i>Open door warning light</i>
	40		47
5	<i>Engine coolant temperature gauge</i>	20	<i>Vehicle skid control system OFF</i>
	39		<i>indicator light</i>
6	<i>Automatic transmission indicator lights</i>		193
	179	21	<i>Anti-lock brake system warning light</i>
7	<i>Fuel gauge</i>		46
	38	22	<i>Vehicle skid control system</i>
8	<i>ODO/TRIP, RESET button</i>		<i>warning light</i>
	40		194
9	<i>Low fuel level warning light</i>	23	<i>Snow mode indicator light</i>
	47		188
10	<i>Tail light indicator light</i>	24	<i>Power mode indicator light</i>
	24		188
11	<i>Headlight high beam indicator light</i>	25	<i>Cruise control indicator light</i>
	26		189
12	<i>Slip indicator light</i>	26	<i>Rear light failure warning light</i>
	192, 193		47
13	<i>Low washer fluid warning light</i>	27	<i>Automatic headlight leveling system</i>
	47		<i>warning light</i>
14	<i>Brake system warning light</i>		26
	42	28	<i>Low engine oil level warning light</i>
15	<i>Low oil pressure warning light</i>		45
	45	29	<i>Malfunction indicator lamp</i>
			46

For detailed information, refer to the description given in each section.

SEAT AND STEERING WHEEL



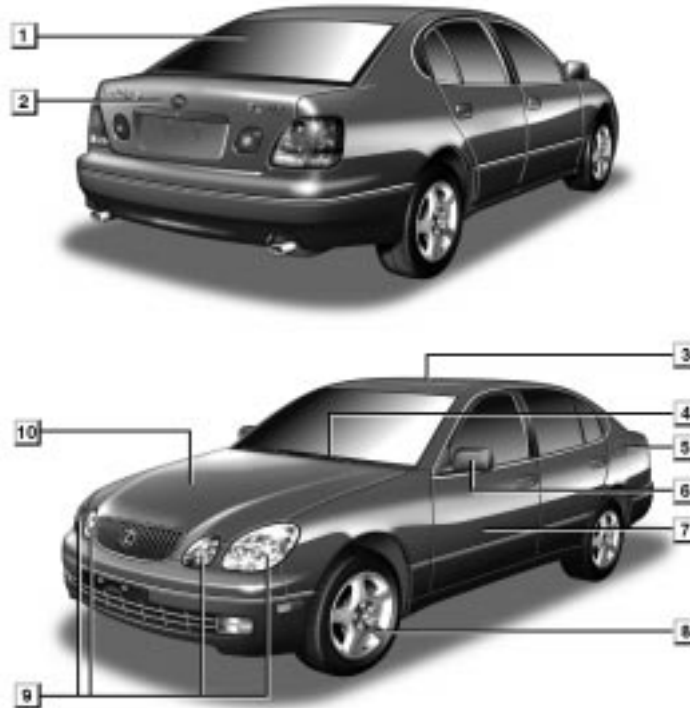
Page

- 1** *Tilt and telescopic steering adjustment switch 79*
- 2** *Seat position, seat cushion angle and height control switch 75, 76*
- 3** *Seatback angle control switch ... 76*
- 4** *Lumbar support control switch .. 77*

For detailed information, refer to the description given in each section.

PICTORIAL INDEX

EXTERIOR VIEW



	<i>Page</i>
1 <i>Rear window defogger</i>	31
2 <i>Trunk lid</i>	67
3 <i>Moon roof</i>	70
4 <i>Wiper and washer</i>	28, 290
5 <i>Fuel filler door</i>	69
6 <i>Outside rear view mirror</i>	80
7 <i>Door</i>	19
8 <i>Tire and wheel</i>	271
9 <i>Headlights</i>	24, 293
10 <i>Hood</i>	66

For detailed information, refer to the description given in each section.

PG000a

