

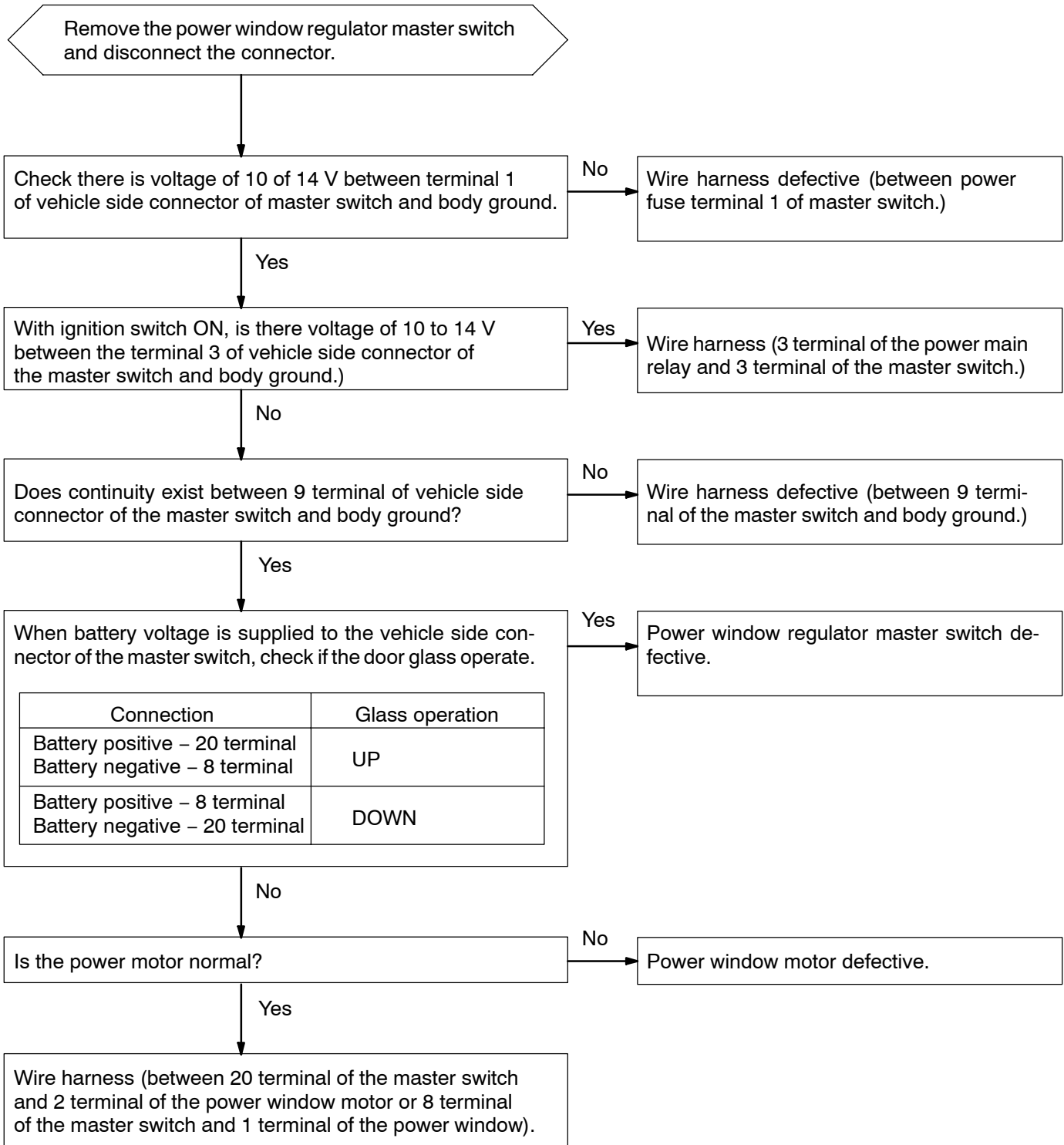
# POWER WINDOW CONTROL SYSTEM

## TROUBLESHOOTING

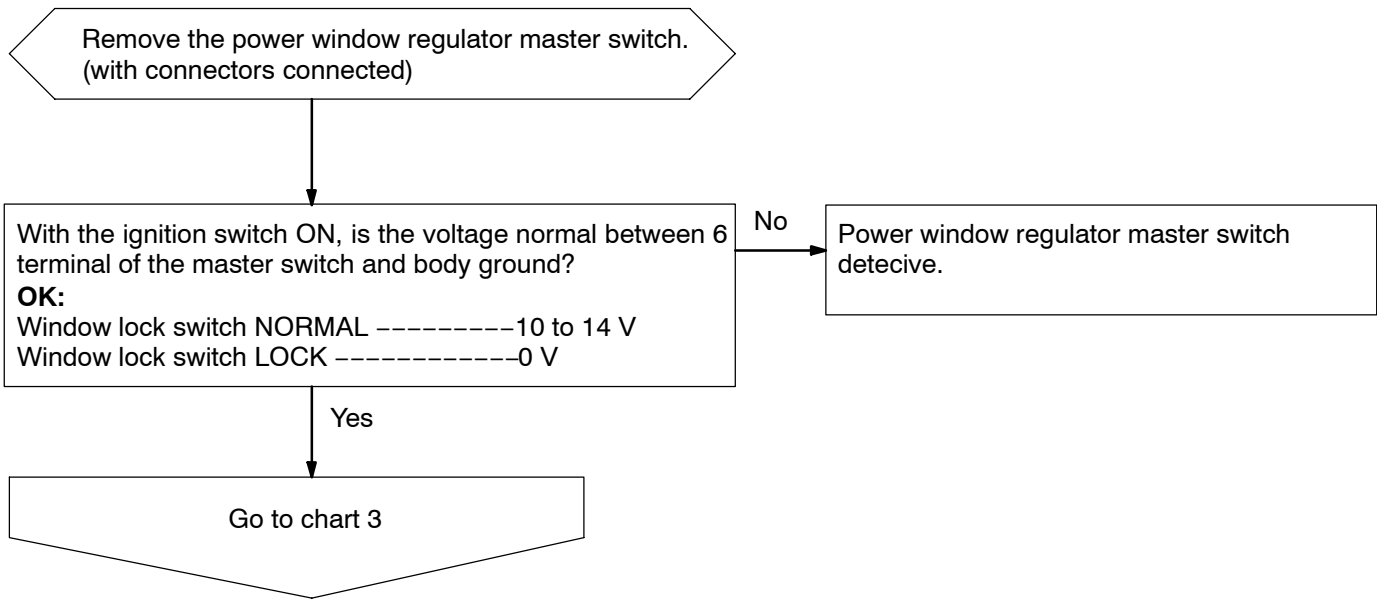
BE02C-10

Malfunction symptoms	Applicable chart
Driver's door does not operate.	1
Passenger's and all rear doors do not operate by using the switches at each seat.	2
Any of passenger's and rear doors does not operate by using the switches of each seat.	3
Passenger's and all rear doors are not controlled remotely by using the master switch. (Switches of each door can be operated.)	4
AUTO UP and AUTO DOWN does not operate. (Prepare a normal master switch.)	5
DOWN operation operates during door glass AUTO UP operation.	6
Even though a foreign object is caught, DOWN operation does not function.	7
After ignition switch has been turned to OFF by using a key, power window function does not operate.	8

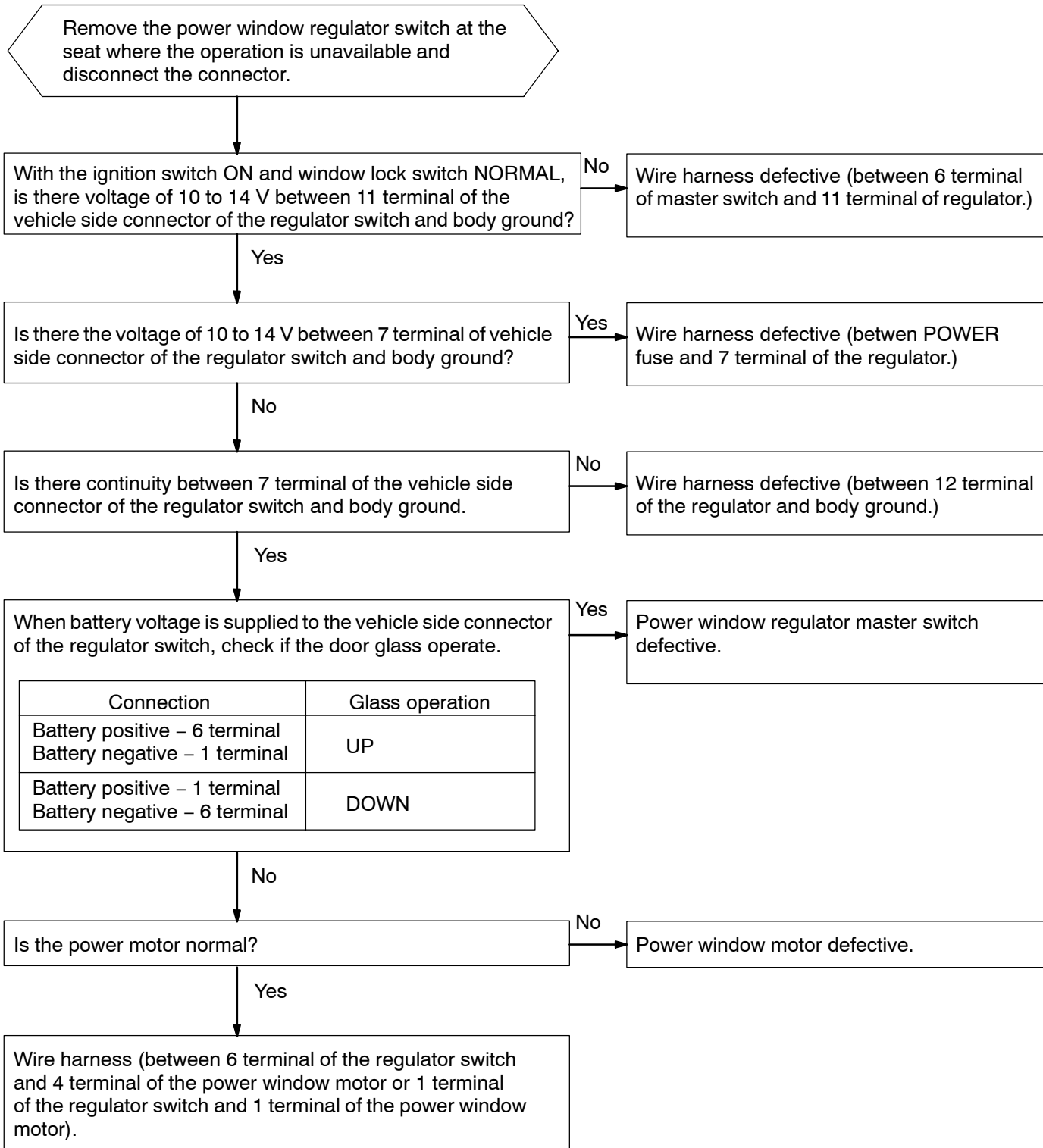
**1 Driver's door does not operate.**



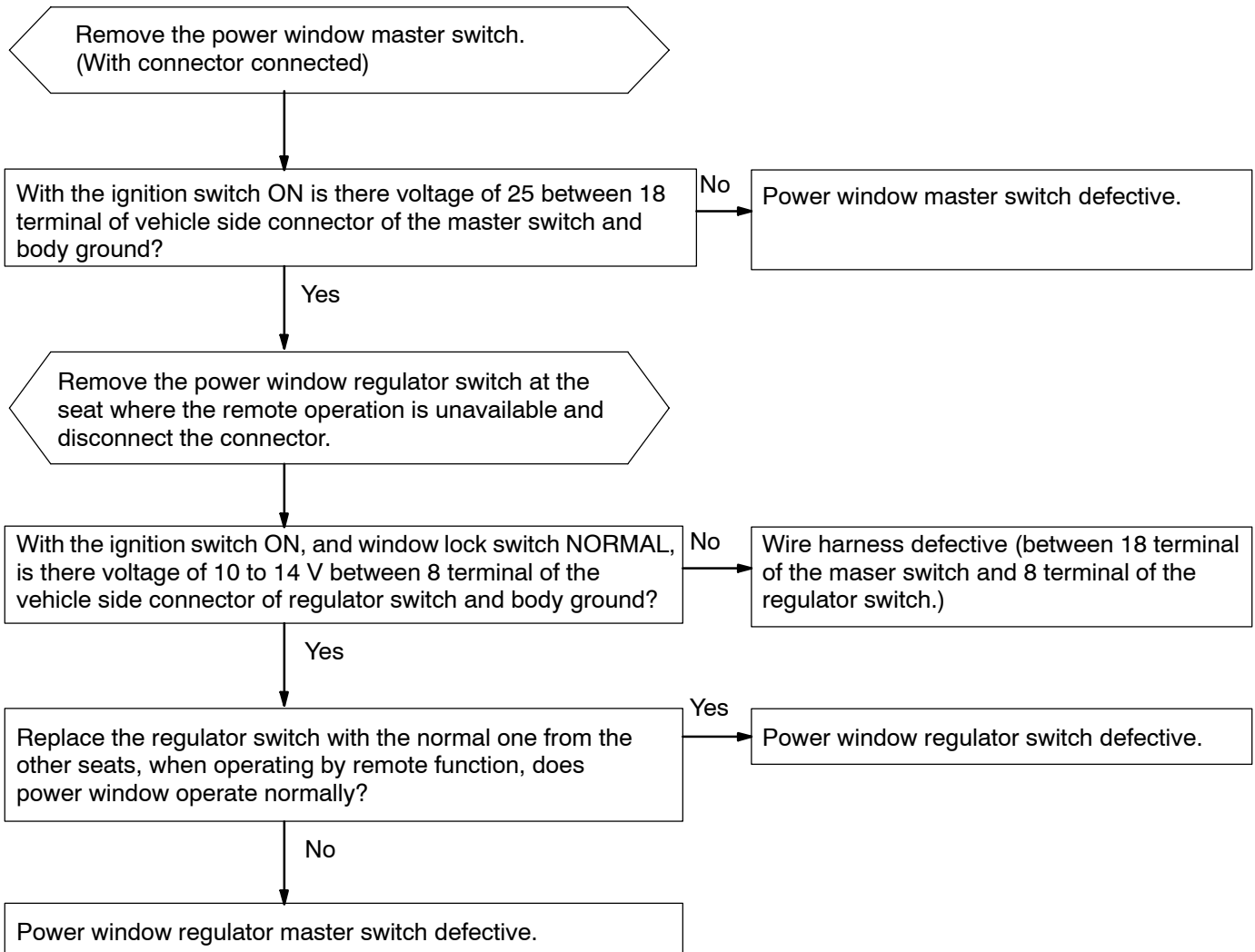
**2 Passenger's and all rear doors do not operate by using the switches of each seat.**



**3 Any of passenger's and all rear doors does not operate by using the switches at each seat.**



- 4** Passenger's and all rear doors are not controlled remotely by using the master switch.  
(Switches at each door can be operated.)



**5 AUTO UP and AUTO DOWN do not operate. (Prepare a normal master switch.)**

Remove the master switch or regulator switch at the seat where AUTO UP and AUTO DOWN is unavailable. (With connectors connected)

Master of regulator switch inspection:  
 Are the voltage and continuity of the connectors connected to the master switch or regulator switch normal?

**OK:**

Terminal No.		Item	Inspection condition	Standard
13	3	Voltage	Fully open by manual operation → fully close → switch OFF	Less than 1 → 10 V to 14 → 0 V
12	4	Voltage	During power window operation	Approx. 5.5 V
10	2	Continuity	Constant	Continuity

No → Disconnect the connectors of the master switch or regulator switch and power window motor.

Yes → Master or regulator switch defective.

Does continuity exist between connectors of the following vehicle side connectors?  
 Switch side ↔ Motor side  
 13 (3) terminal ↔ 3 terminal  
 12 (4) terminal ↔ 4 terminal  
 10 (2) terminal ↔ 2 terminal  
 The number in parenthesis shows the terminal No.

No → Wire harness defective (Open circuit in each terminal)

Yes → Does continuity exist between 13 (3), 12 (4) and 10 (2) terminals on the switch side or 3, 4, 2 terminals and body ground?

No → Wire harness defective (Short circuit).

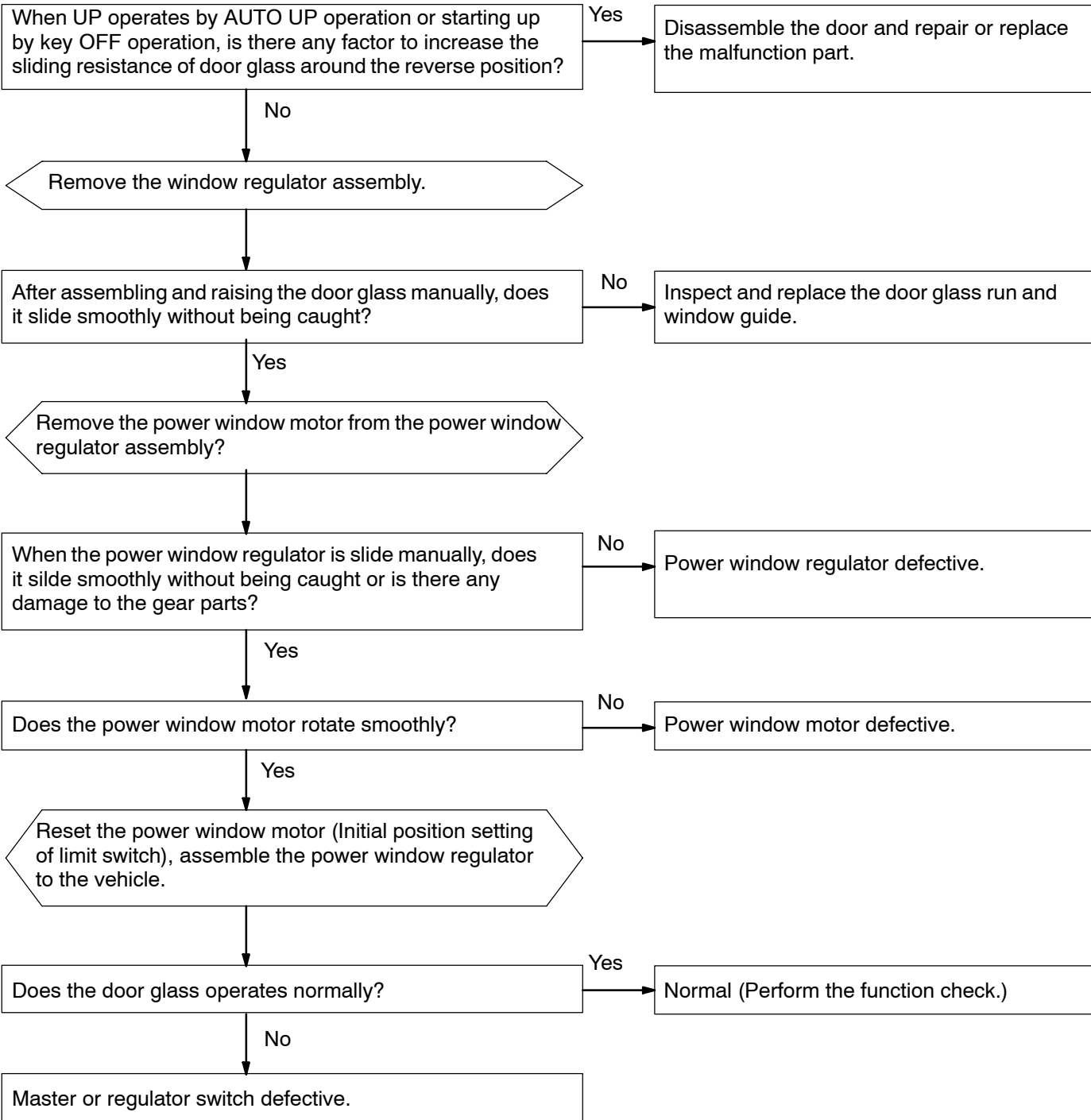
Yes → Connect the connector of power window motor.

Connect the normal master switch or regulator switch and check if AUTO UP and DOWN operates.

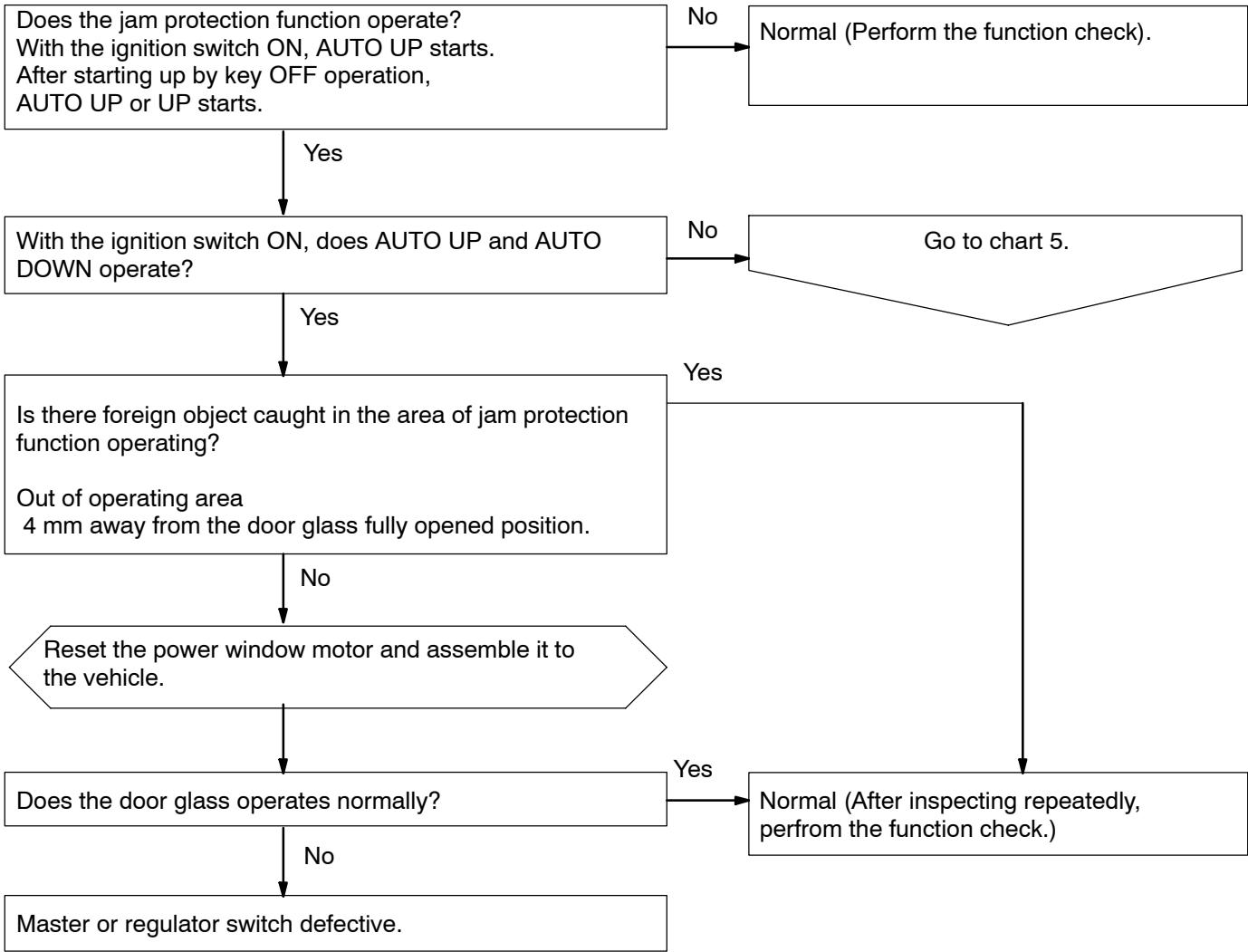
Yes → Master switch or regulator switch.

No → Power window motor defective.

**6 DOWN operates during door glass AUTO UP operation.**



**7 Even through a foreign object is caught, DOWN operation does not function.**





**8** After ignition switch has been turned OFF by using a key, power window function does not operate.

