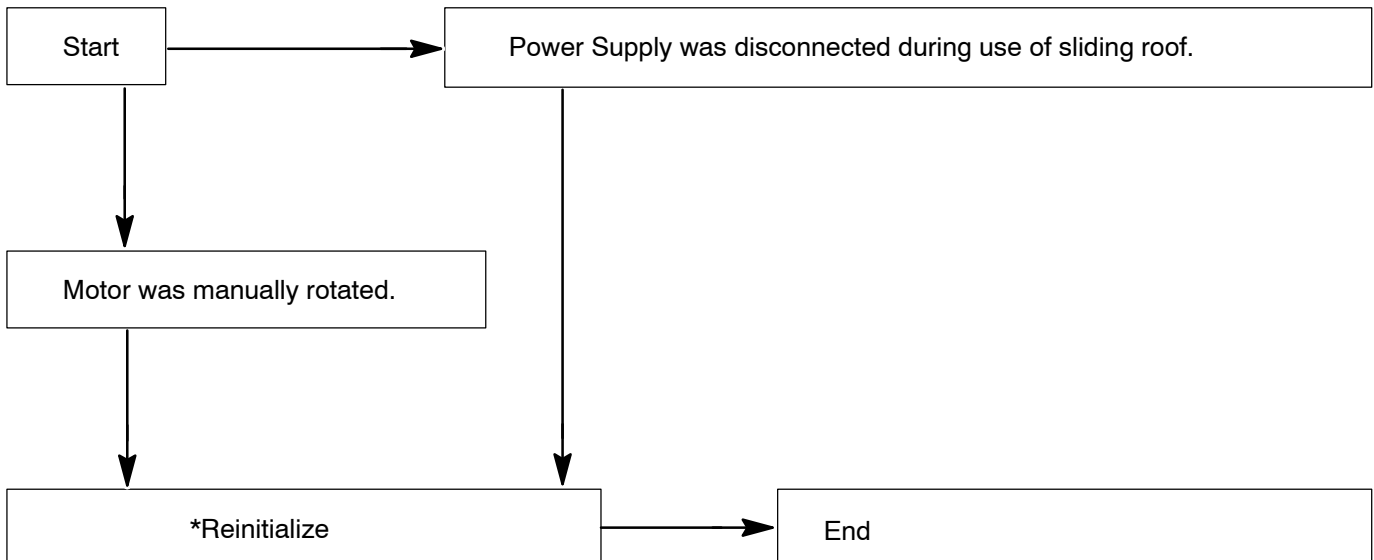


# SLIDING ROOF SYSTEM

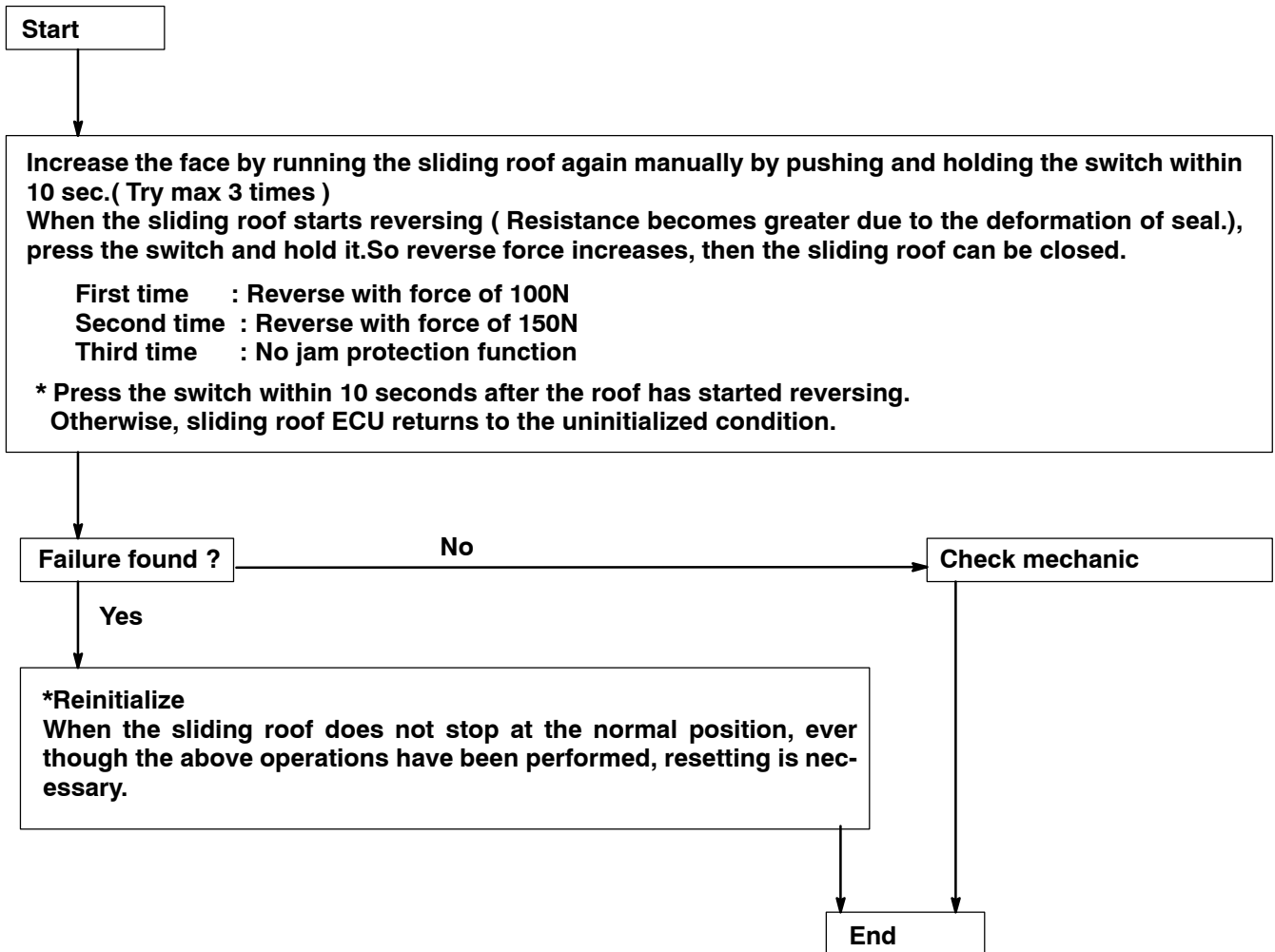
## TROUBLESHOOTING

BE009-04

1	Sliding Roof does not stop at correct position.
---	---



2	Sliding Roof always reopens (anti trap function).
---	---



## \*Reinitializing method

- (a) Move the sliding roof to the maximum tilted position.
- (b) Release the switch, press the switch again and hold it for 10 secs.
- (c) The sliding roof operates in a cycle of TILT DOWN → SLIDE OPEN → SLIDE CLOSE → TILT UP.  
This completes reinitializing.