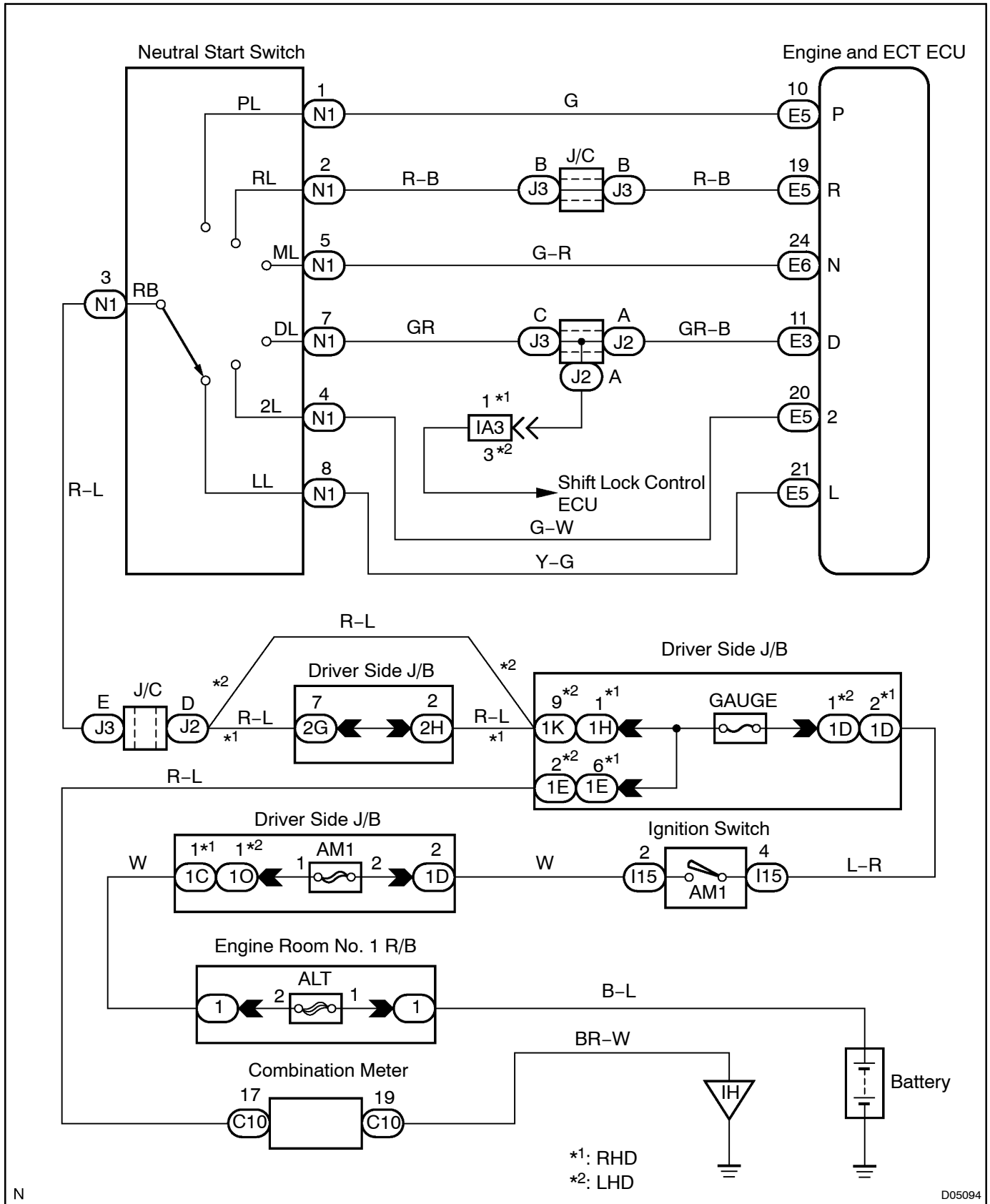


## Neutral Start Switch Circuit Malfunction

### CIRCUIT DESCRIPTION

The neutral start switch detects the shift lever range and sends signals to the Engine and ECT ECU.

WIRING DIAGRAM



## INSPECTION PROCEDURE

### HINT:

In case of using the hand-held tester, start the inspection from step 1 and in case of not using the hand-held tester, start from step 2.

**1** Read PNP, REVERSE, DRIVE, 2ND and LOW signals.

### PREPARATION:

- Remove the DLC3 cover.
- Connect a hand-held tester to the DLC3.
- Turn the ignition switch ON and hand-held tester main switch ON.

### CHECK:

Shift lever into the P, R, N, D, 2 and L ranges, and read the PNP, REVERSE, DRIVE, 2ND and LOW signals on the hand-held tester.

### OK:

Shift range	Signal
P/N	PNP [OFF] → ON
R	REVERSE [OFF] → ON
D	DRIVE [OFF] → ON
2	2ND : OFF → ON
L	LOW : OFF → ON

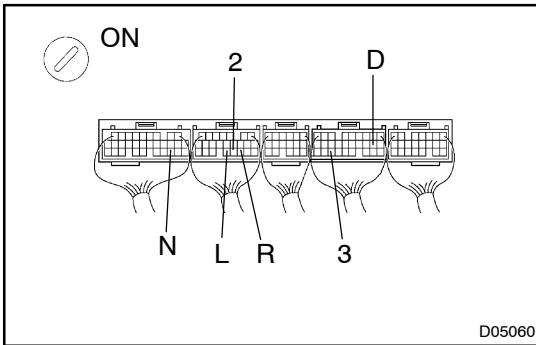
**OK**

Check and replace the Engine and ECT ECU (See page N-32).

**NG**

Go to step 3.

**2** Measure voltage between each terminals of P, R, N, D, 2 and L of Engine and ECT ECU and body ground.



**PREPARATION:**

Turn the ignition switch ON.

**CHECK:**

Measure voltage between each terminals P, R, N, D, 2 and L of Engine and ECT ECU and body ground when the shift lever is shifted to the following positions.

**OK:**

Tester connection	Condition	Specified condition
P - Body ground	Shift lever range P	Battery positive voltage
R - Body ground	Shift lever range R	Battery positive voltage*
D - Body ground	Shift lever range D	Battery positive voltage
N - Body ground	Shift lever range N	Battery positive voltage
2 - Body ground	Shift lever range 2	Battery positive voltage
L - Body ground	Shift lever range L	Battery positive voltage

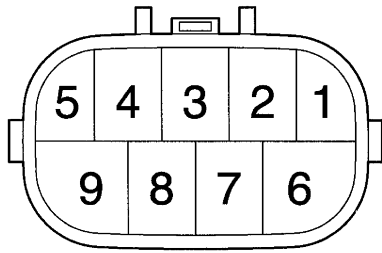
**HINT:**

\*: The voltage will drop slightly due to lighting up of the back up light.

**OK**

**Check and replace the Engine and ECT ECU (See page IN-32).**

**NG**

**3 Check neutral start switch.**


D05057

**PREPARATION:**

- (a) Jack up the vehicle.  
 (b) Remove the neutral start switch connector.

**CHECK:**

Check continuity between each terminal shown below when the shift lever is moved to each range.

**OK:**

Shift Range	Terminal No. to continuity	Terminal No. to continuity
P	1 - 3	6 - 9
R	2 - 3	-
N	3 - 5	6 - 9
D	3 - 7	-
2	3 - 4	-
L	3 - 8	-

**NG****Replace the neutral start switch.****OK**

**Repair or replace harness and connector between battery and neutral start switch, neutral start switch and Engine and ECT ECU (See page IN-32).**