

<b>DTC</b>	<b>Always ON</b>	<b>ABS &amp; TRC ECU Malfunction</b>
------------	------------------	--------------------------------------

## CIRCUIT DESCRIPTION

DTC No.	DTC Detecting Condition	Trouble Area
Always ON	ABS & TRC ECU internal malfunction is detected.	• ABS & TRC ECU

Fail-safe function:

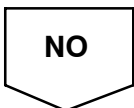
If any trouble occurs in the ECU, the ECU cuts off current to the ABS solenoid relay and prohibits ABS control and TRC control.

## INSPECTION PROCEDURE

<b>1</b>	<b>Is DTC output?</b>
----------	-----------------------

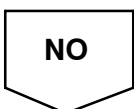
Check DTC on [page DI-223](#).

<b>YES</b>	<b>Repair circuit indicated by the code output.</b>
------------	---



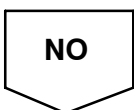
<b>2</b>	<b>Is normal code displayed?</b>
----------	----------------------------------

<b>YES</b>	<b>Check solenoid relay. Check for short circuit in harness and connector between solenoid relay and check connector (<a href="#">See page IN-32</a>).</b>
------------	--



<b>3</b>	<b>Does ABS warning light go off?</b>
----------	---------------------------------------

<b>YES</b>	<b>Check for open or short circuit in harness and connector between ECU-IG fuse and ABS &amp; TRC ECU (<a href="#">See page IN-32</a>).</b>
------------	---



**4 Check battery voltage.****CHECK:**

Check the battery voltage.

**OK:**

10 – 14 V

**NG****Check and repair the charging system  
(See page CH-1).****OK****5 Check ABS warning light.****PREPARATION:**

- (a) Turn the ignition switch OFF.
- (b) Disconnect the connector from the ABS & TRC ECU.
- (c) Turn the ignition switch ON.

**CHECK:**

Check the ABS warning light goes off.

**OK****Check and replace ABS & TRC ECU.****NG****Check for short circuit in harness and connector between ABS warning light, check connector, DLC3 and ABS & TRC ECU (See page IN-32).**