

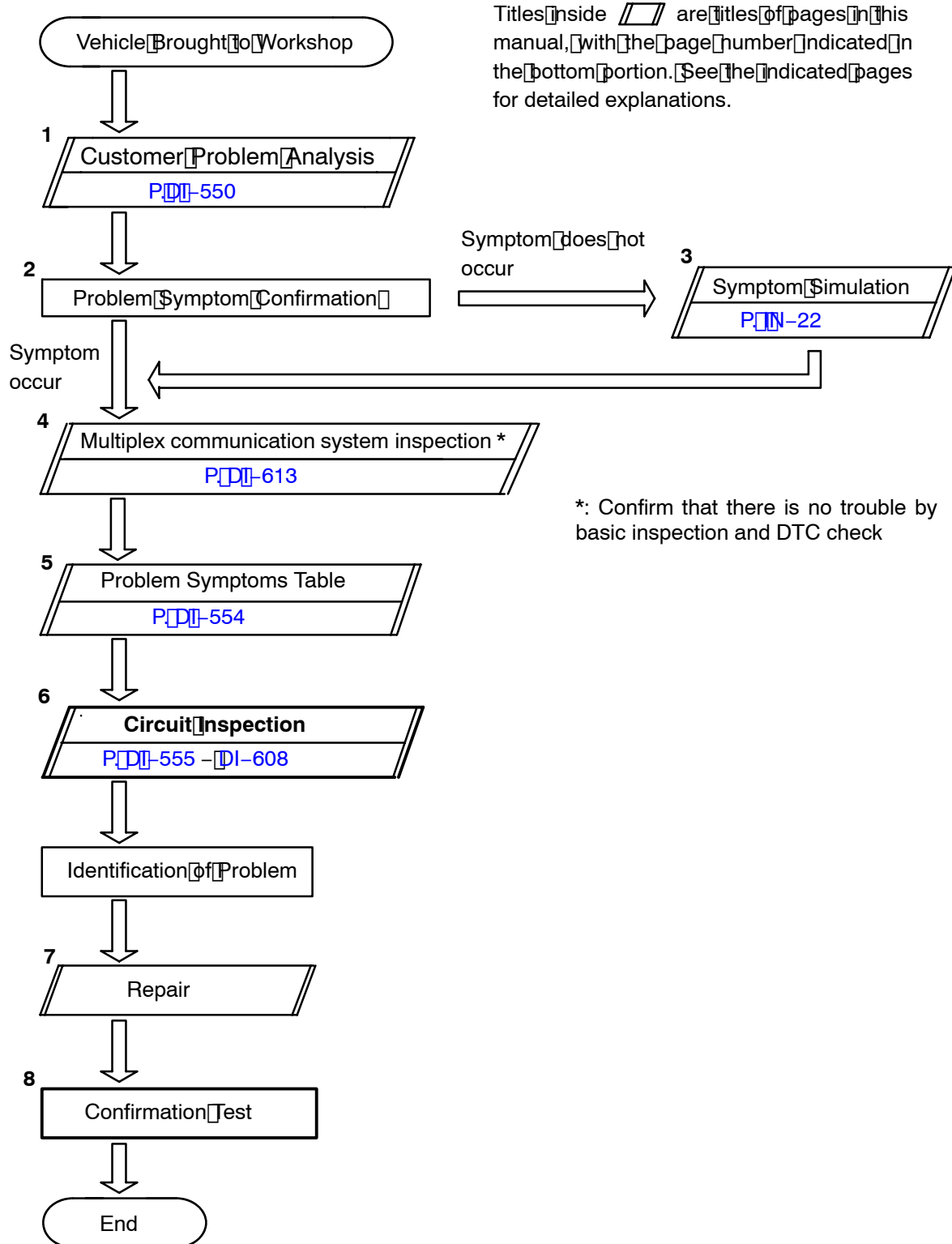
# BODY CONTROL SYSTEM

## HOW TO PROCEED WITH TROUBLESHOOTING

DI62C-01

### HINT:

This ECU is connected to the multiplex communication system. Therefore, be sure to check that there is no troubles in the multiplex communication system before performing the trouble shooting.



Step 6, 8 : Diagnostic steps permitting the use of the LEXUS hand-held tester .