

POWER STEERING FLUID BLEEDING

SR05P-06

1. CHECK FLUID LEVEL (See page SR-6)
2. JACK UP FRONT OF VEHICLE AND SUPPORT IT WITH STANDS
3. TURN STEERING WHEEL

With the engine stopped, turn the wheel slowly from lock to lock several times.

4. LOWER VEHICLE
5. START ENGINE

Run the engine at idle for a few minutes.

6. TURN STEERING WHEEL

(a) With the engine idling, turn the wheel to left or right full lock position and keep it there for 2-3 seconds, then turn the wheel to the opposite full lock position and keep it there for 2-3 seconds.

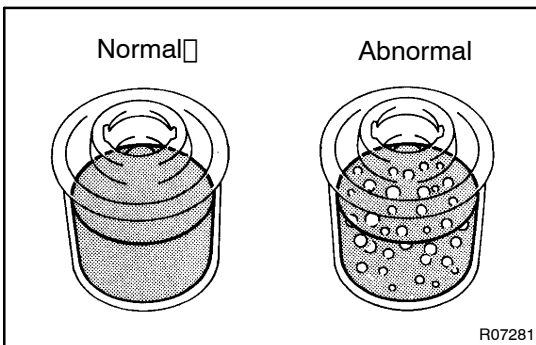
(b) Repeat (a) several times.

7. STOP ENGINE

8. CHECK FOR FOAMING OR EMULSIFICATION

If the system has to be bled twice specifically because of foaming or emulsification, check for fluid leaks in the system.

9. CHECK FLUID LEVEL (See page SR-6)



R07281