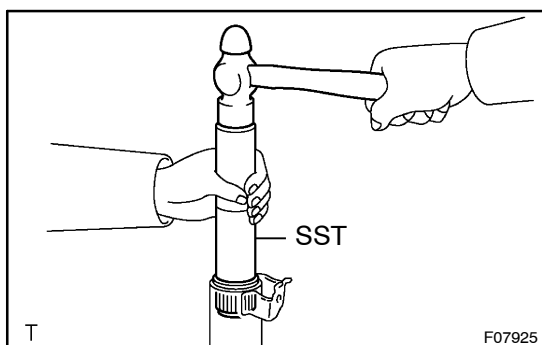


REASSEMBLY

NOTICE:

When using a vise, do not overtighten it.

1. COAT PARTS INDICATED BY ARROWS WITH MOLYBDENUM DISULFIDE LITHIUM BASE GREASE
(See page SR-10)



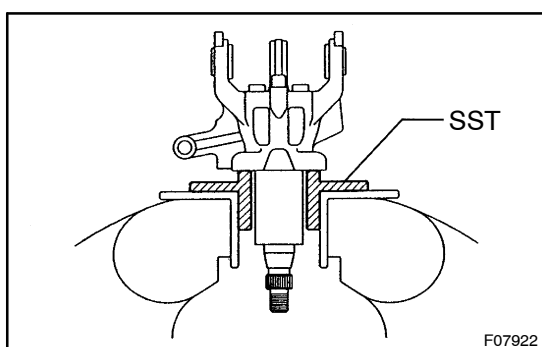
2. INSTALL MAIN SHAFT BUSHING

- (a) Coat a new main shaft bushing with molybdenum disulfide lithium base grease.
- (b) Using SST and a hammer, tap in the main shaft bushing.
SST 09612-22011

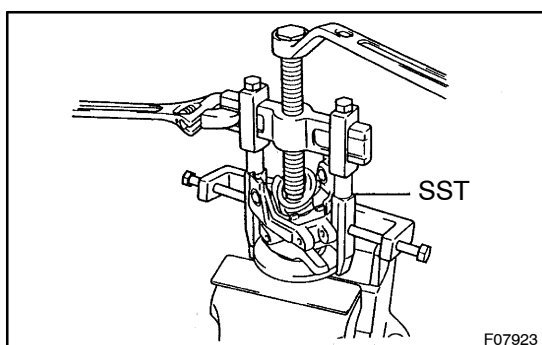
3. INSTALL COMPRESSION SPRING, BEARING THRUST COLLAR AND BEARING

4. INSTALL UPPER COLUMN TUBE SUB-ASSEMBLY TO MAIN SHAFT ASSEMBLY

- (a) Temporarily install the upper column tube sub-assembly to the No. 1 main shaft.



- (b) Secure the No. 1 main shaft with upper column tube sub-assembly and SST in a vise.
SST 09316-60011 (09316-00051)

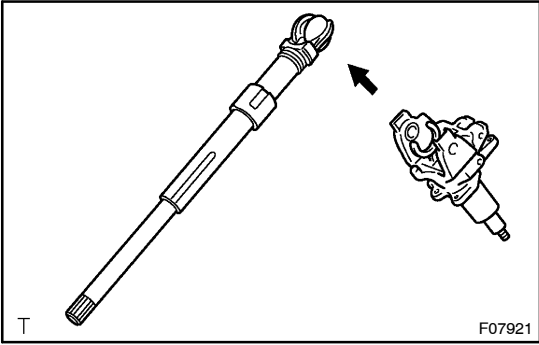


- (c) Using SST, compress the spring of the upper column tube sub-assembly.
SST 09950-40011 (09951-04010, 09952-04010, 09953-04020, 09954-04010, 09955-04061, 09958-04011)

NOTICE:

Do not overtighten the SST.

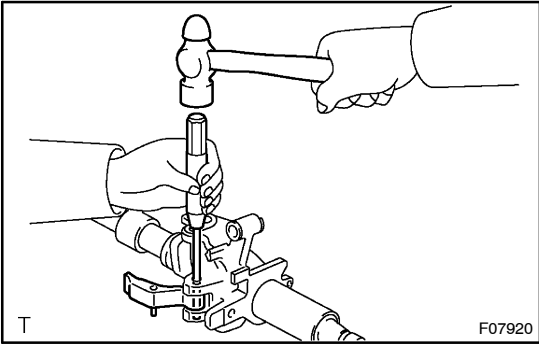
- (d) Using a snap ring expander, install a new snap ring and No. 1 main shaft.



- (e) Assemble the No. 1 main shaft with upper column tube sub-assembly and No. 2 main shaft sub-assembly.

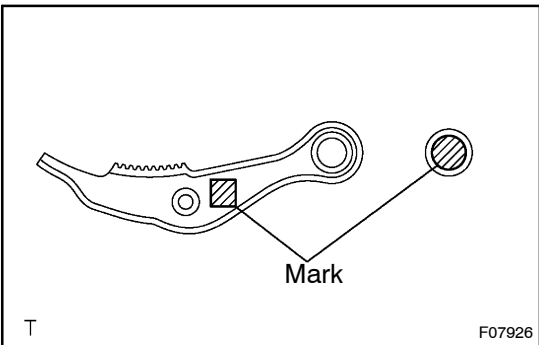
NOTICE:

Do not bend the universal joint of the shaft more than 20°.



5. INSTALL MAIN SHAFT ASSEMBLY WITH UPPER COLUMN TUBE SUB-ASSEMBLY

- (a) Using a pin punch (5 mm) and hammer, install the pawl assembly with a new No. 2 tilt steering shaft.

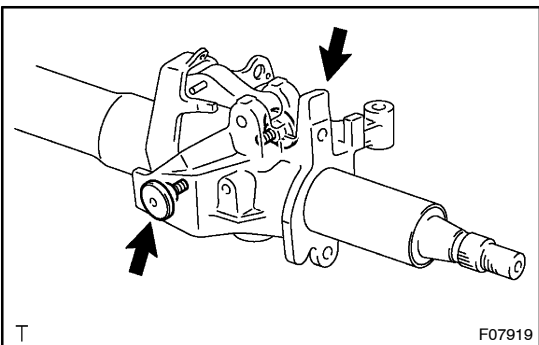


HINT:

Install a new No. 2 tilt steering shaft with the one having the mark corresponding to the mark stamped on the pawl assembly.

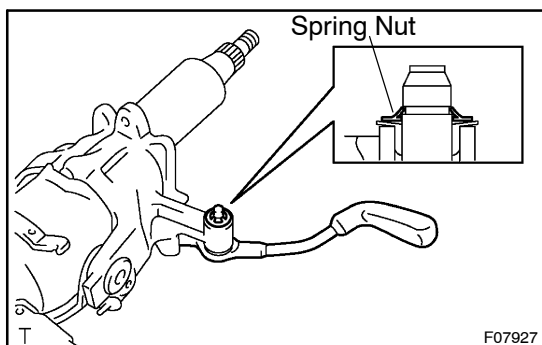
| Pawl assembly mark | No. 2 tilt steering shaft color | No. 2 tilt steering shaft part number |
|--------------------|---------------------------------|---------------------------------------|
| 1 | White | 45856-26010 |
| 2 | Yellow | 45856-26020 |
| 3 | Black | 45856-26030 |

- (b) Install the main shaft assembly with the upper column tube sub-assembly and pawl retainer.



- (c) Using a hexagon wrench (6 mm), install the 2 tilt steering shafts.

Torque: 20 N·m (210 kgf·cm, 15 ft·lbf)

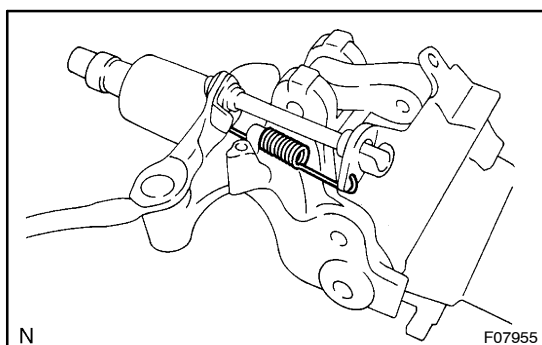
**6. INSTALL TILT LEVER ASSEMBLY**

- (a) Install the 2 bushings to the upper column tube sub-assembly.
- (b) Install the tilt lever assembly with a new spring nut.

NOTICE:

Make sure that the spring nut is installed facing in the correct direction.

- (c) Install the tilt lever link.



- (d) Install the tension spring.

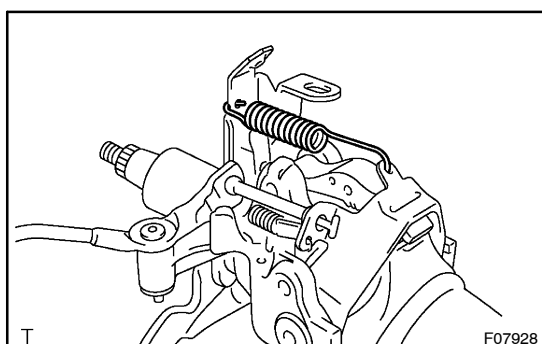
NOTICE:

Make sure that the tension spring is installed facing in the correct direction.

7. INSTALL TURN SIGNAL BRACKET

- (a) Install the turn signal bracket with the 2 bolts.

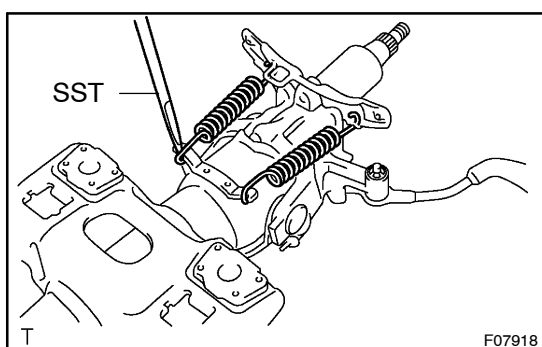
Torque: 2.9 N·m (30 kgf·cm, 26 in·lbf)



- (b) Using pliers, install the tension spring.

NOTICE:

Make sure that the tension spring is installed facing in the correct direction.

**8. INSTALL 2 TENSION SPRINGS**

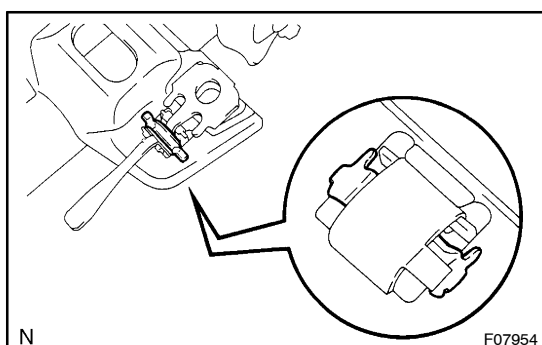
Using SST, install the 2 tension springs.

SST 09703-30010

9. INSTALL COLUMN PROTECTOR

Install the column protector with the 2 bolts.

Torque: 6.1 N·m (62 kgf·cm, 54 in·lbf)

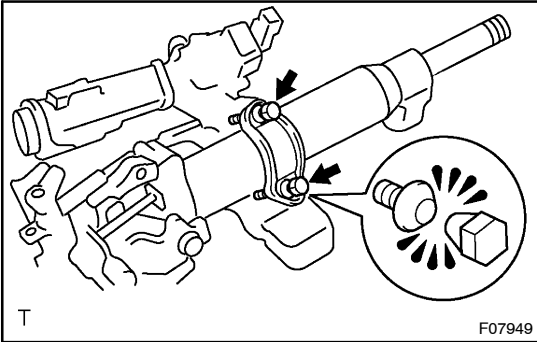
**10. INSTALL 2 ENERGY ABSORBING PLATES**

- (a) Install the 2 new energy absorbing plate guides and energy absorbing plates.
- (b) Install the 2 new energy absorbing clips.

11. INSTALL COLUMN TUBE SUPPORT

- (a) Install the lower column tube attachment to the column tube support.
- (b) Install the column tube support with the lower column tube attachment with the bolt.

Torque: 15 N·m (150 kgf·cm, 11 ft·lbf)

**12. INSTALL COLUMN UPPER BRACKET AND COLUMN UPPER CLAMP**

- (a) Install the column upper bracket and column upper clamp with 2 new tapered-head bolts.
- (b) Tighten the 2 tapered-head bolts until the bolt heads break off.

13. INSTALL TRANSPONDER KEY COIL AND KEY CYLINDER LAMP ASSEMBLY

Install the key cylinder lamp assembly and transponder key coil with the screw.