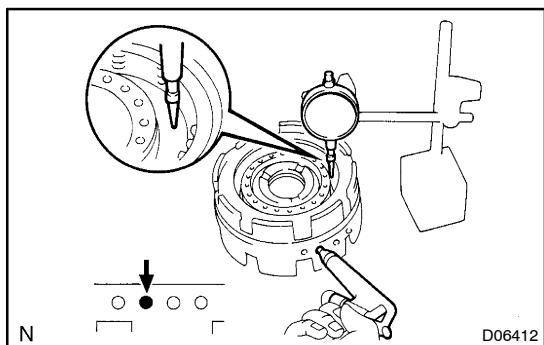


DISASSEMBLY

1. REMOVE PLANETARY SUN GEAR AND NO. 1 ONE-WAY CLUTCH (See page AT-66)



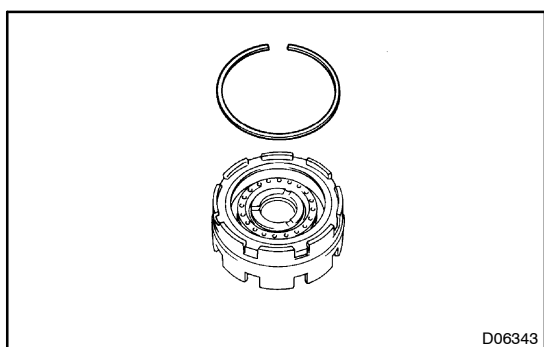
2. CHECK PISTON STROKE OF NO. 2 BRAKE

Using dial indicator, measure the No.2 brake piston stroke applying and releasing the compressed air (392 – 785 kPa, 4 – 8 kgf/cm², 57 – 114 psi), as shown.

Piston stroke:

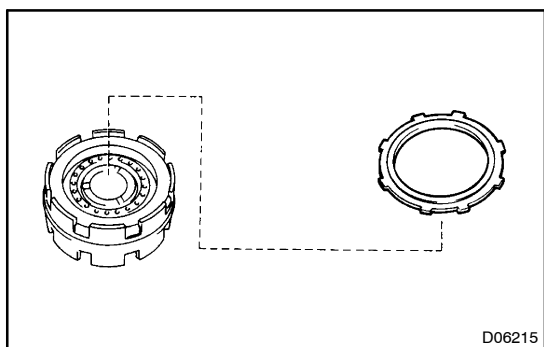
0.98 – 1.71 mm (0.03860 – 0.0673 in.)

If the values are non-standard, inspect the discs.

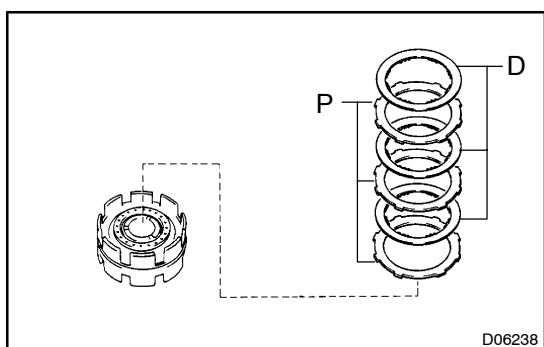


3. REMOVE FLANGE

- (a) Using a screwdriver, remove the snap ring.

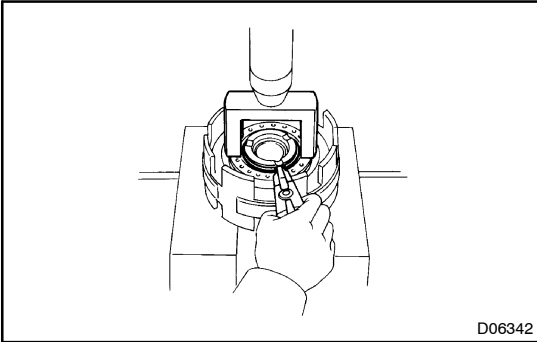


- (b) Remove the flange.

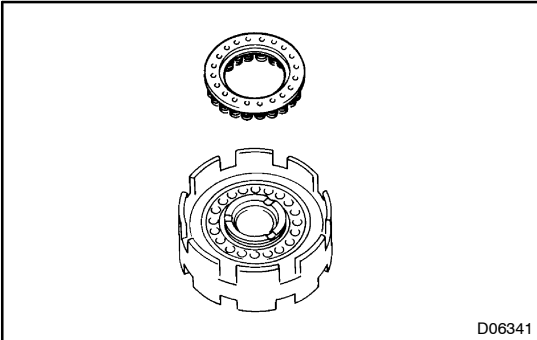


4. REMOVE DISC AND PLATE

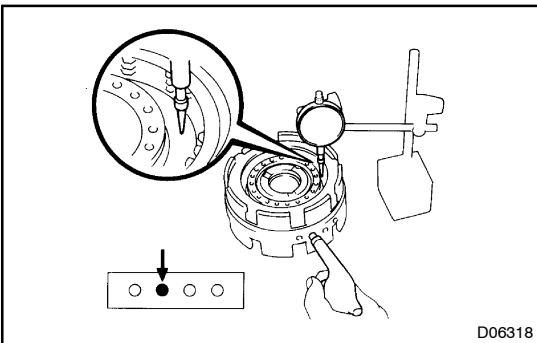
Remove the 3 discs and 3 plates.

**5. REMOVE PISTON RETURN SPRING**

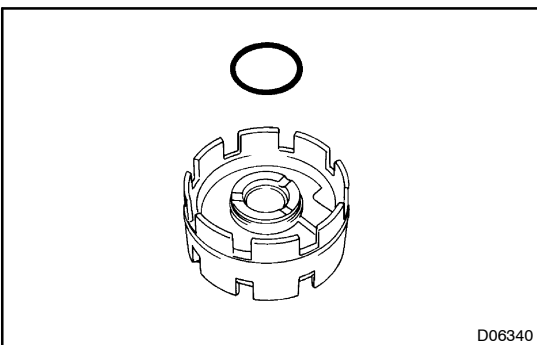
- (a) Place SST on the spring seat and compress the return springs with a shop press.
SST 09350-20015 (09369-20040)
- (b) Using a snap expander, remove the snap ring.



- (c) Remove the piston return spring.

**6. REMOVE NO. 2 BRAKE PISTON**

- (a) Hold the No. 2 brake piston with hand, apply compressed air to the center support to remove the No. 2 brake piston.
- (b) Remove the O-ring from piston.



- (c) Remove the O-ring from the center support.