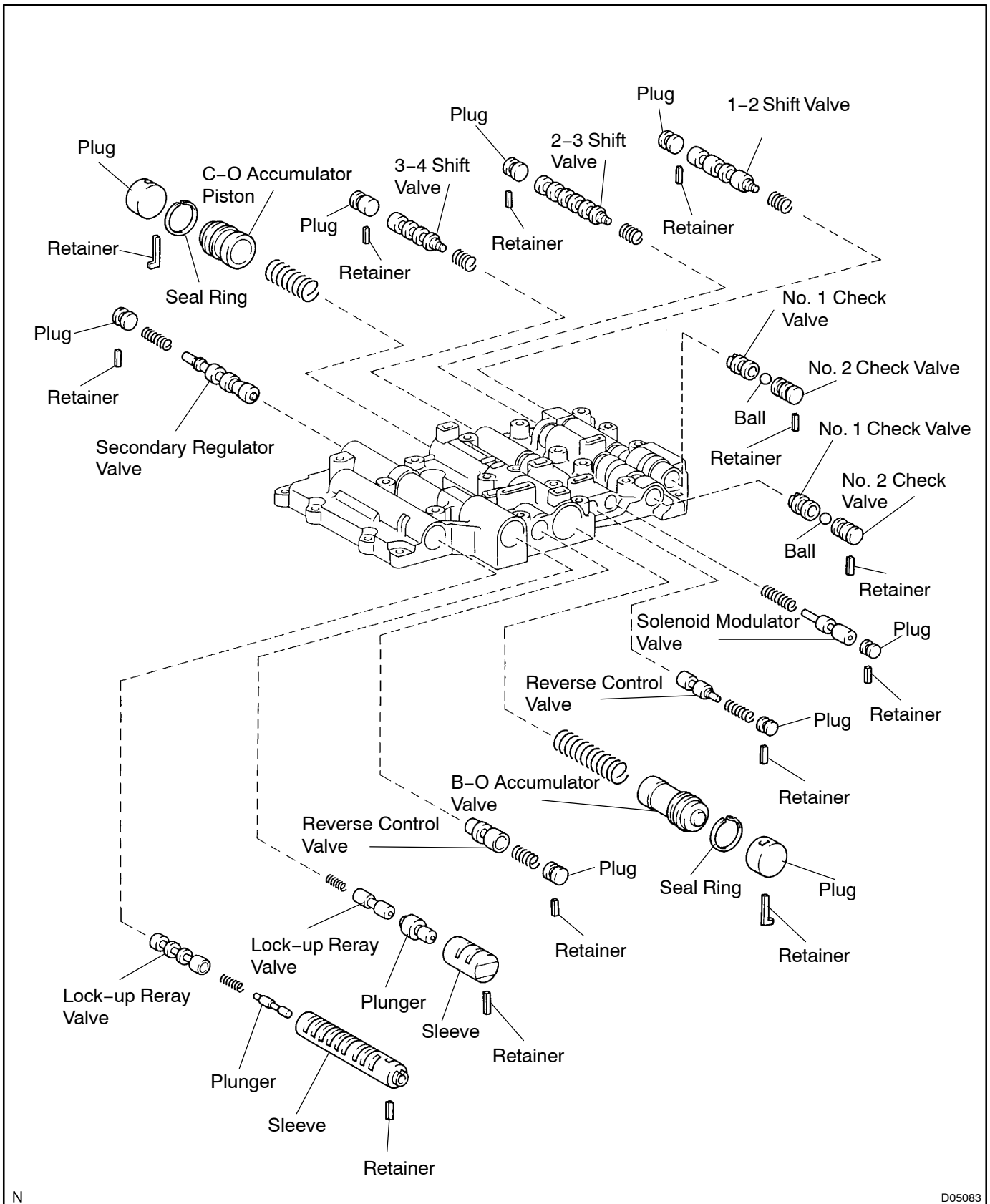


UPPER VALVE BODY

ATOJD-01

LOCATION COMPONENTS

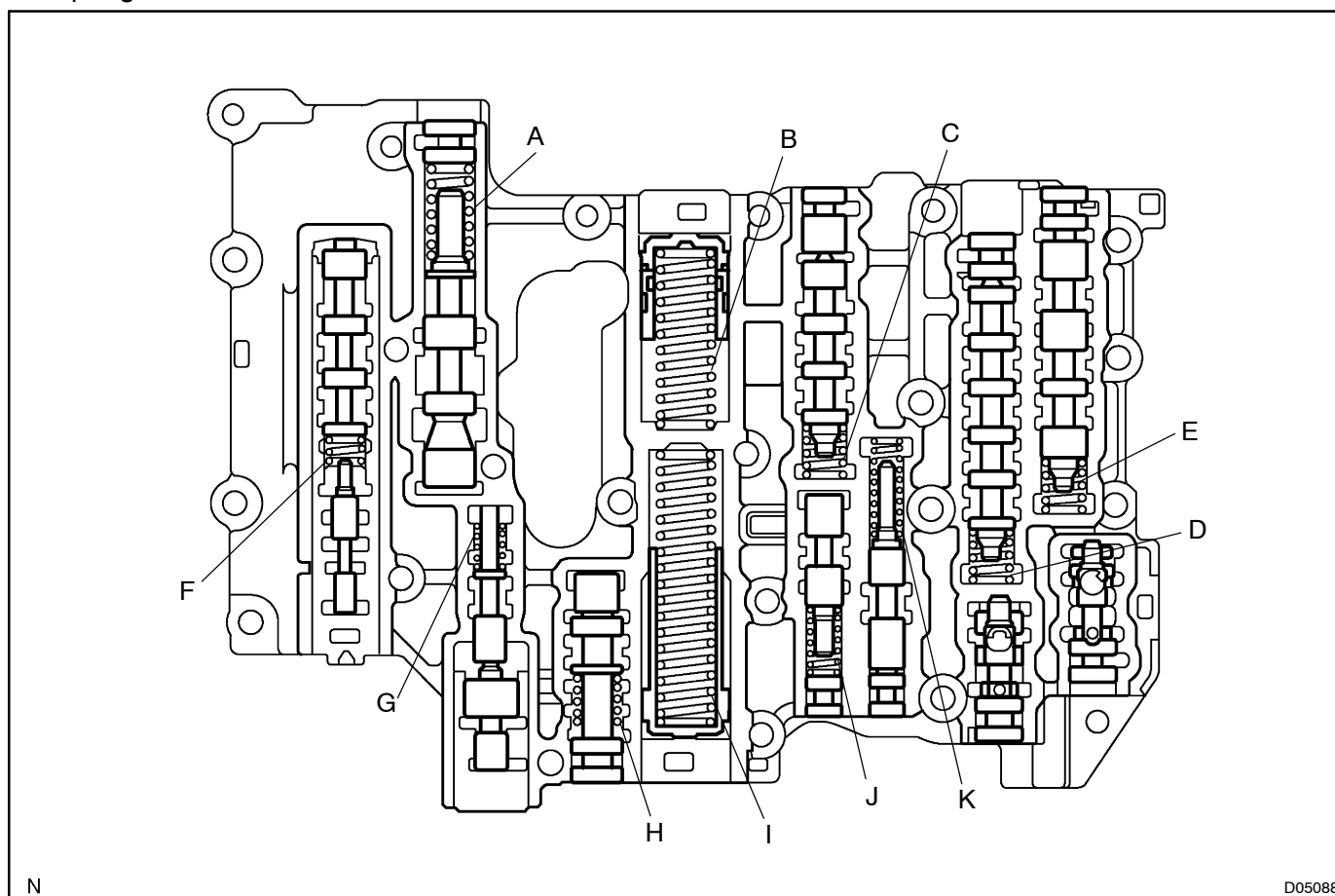


N

D05083

SPRING**HINT:**

During reassembly, please refer to the spring specifications below to help you differentiate among the different springs.

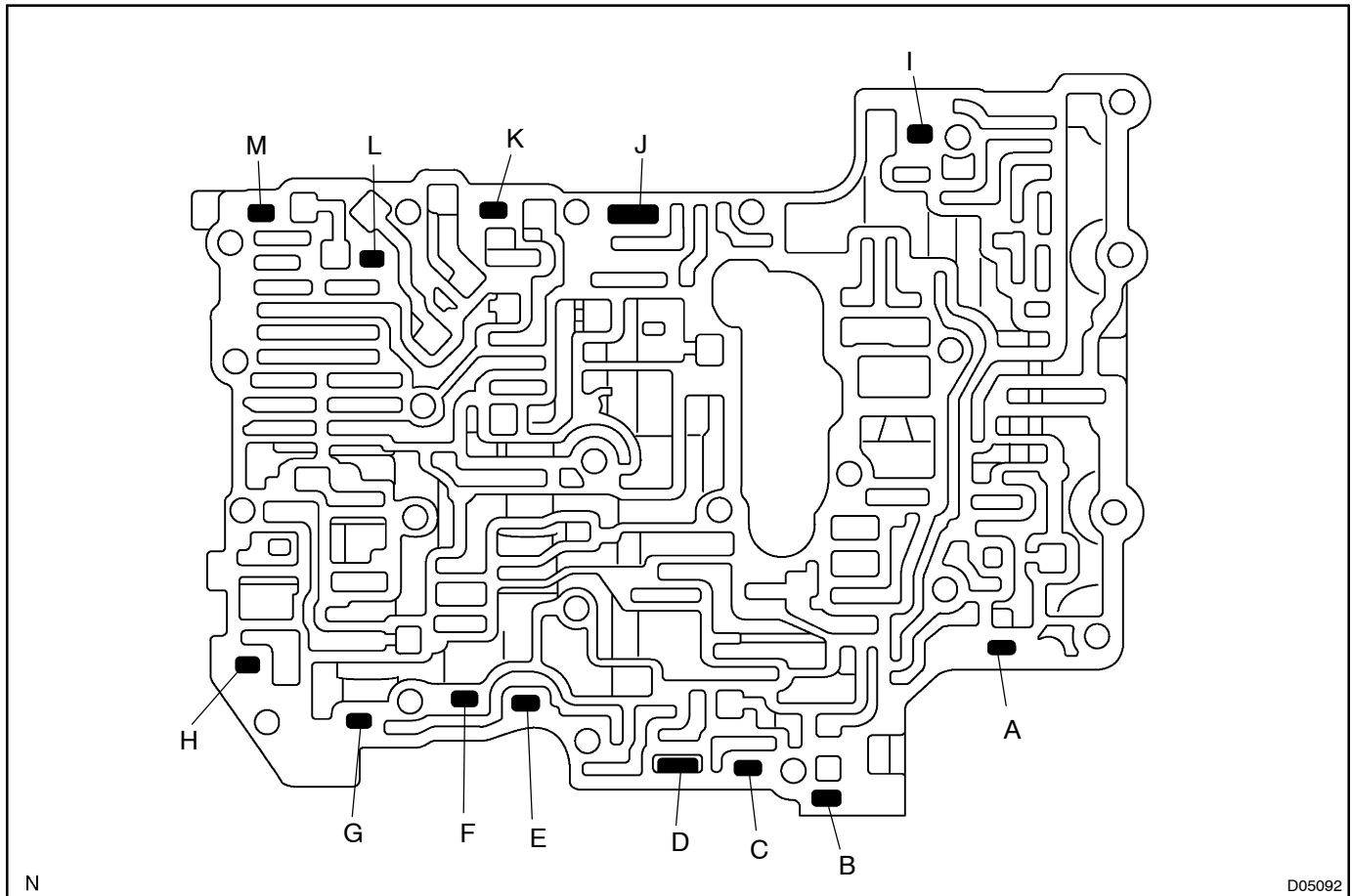


N

D05088

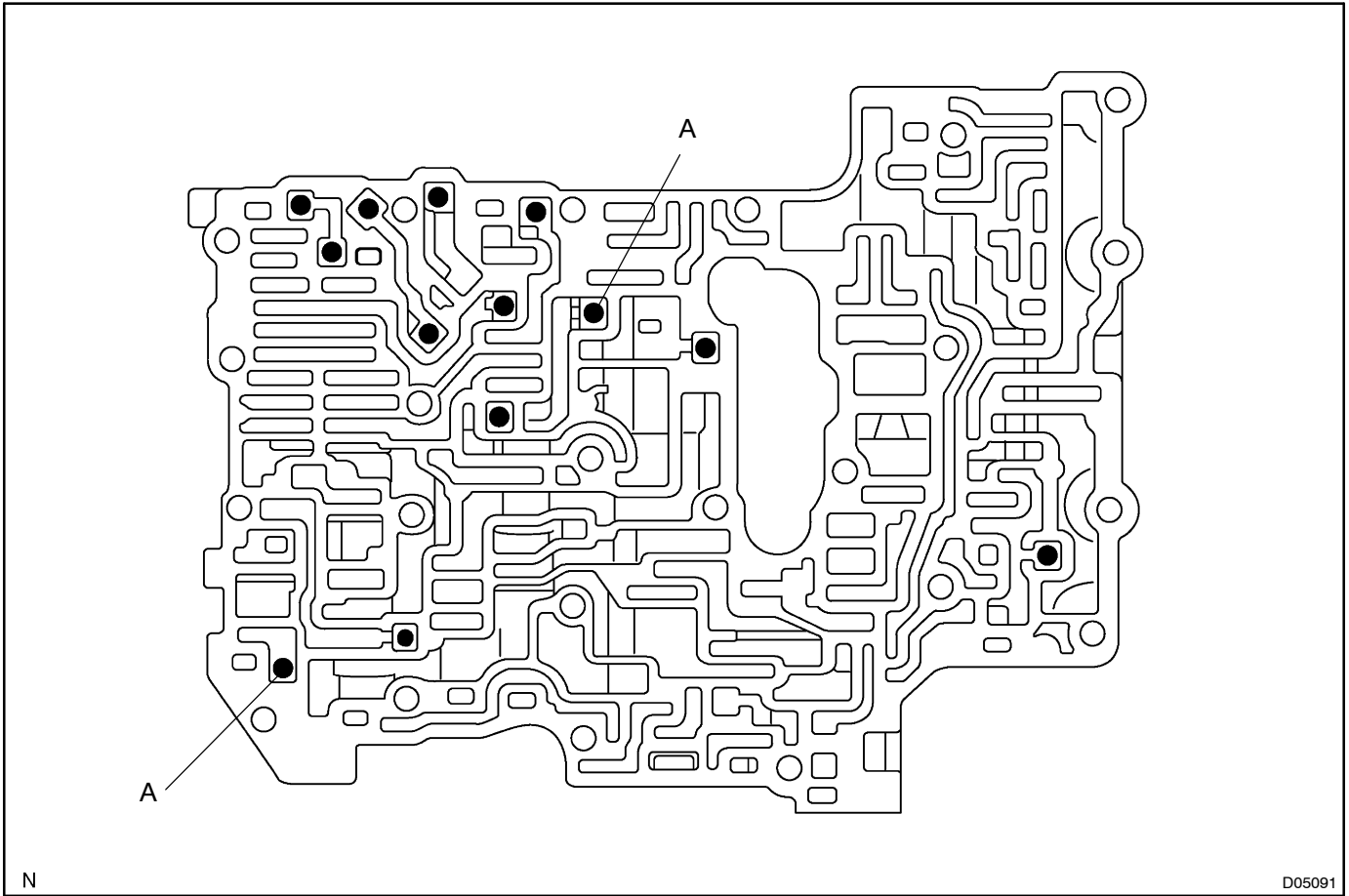
Mark	Name (Color)	Free lenger / Outer diameter mm (in.)	Total No. of coils
A	Secondary Regulator Valve (Purple)	32.88 (1.2944) / 10.60 (0.4173)	9.13
B	C - O Accumulator Piston (White or Pink)	54.41 (2.1421) / 15.00 (0.5906)	13.26
C	3 - 4 Shift Valve (Red)	25.50 (1.0039) / 9.73 (0.3831)	7.75
D	2 - 3 Shift Valve (Red)	25.50 (1.0039) / 9.73 (0.3831)	7.75
E	1 - 2 Shift Valve (Red)	25.50 (1.0039) / 9.73 (0.3831)	7.75
F	Lock-up Relay Valve (Red)	23.42 (0.9220) / 5.86 (0.2307)	12.25
G	Lock-up Control Valve (Yellow)	20.87 (0.8217) / 5.55 (0.2185)	11.15
H	Reverse Control Valve (None)	25.85 (1.0071) / 8.64 (0.3402)	8.75
I	B - O Accumulator Valve (White or Red)	71.50 (2.8150) / 14.00 (0.5512)	19.81
J	Reverse Sequence Valve (Light blue)	26.73 (1.0523) / 8.20 (0.33228)	10.22
K	Solenoid Modulator Valve (Yellow)	32.13 (1.2649) / 8.00 (0.3150)	15.75

RETAINER



Mark	Retainer	Height / Width / Thickness mm (in.)
A	Lock-up Relay Valve	12.5 (0.492) / 5.0 (0.197) / 3.2 (0.126)
B	Lock-up Control Valve	19.0 (0.748) / 5.0 (0.197) / 3.2 (0.126)
C	Reverse Control Valve	14.0 (0.551) / 5.0 (0.197) / 3.2 (0.126)
D	B - O Accumulator Valve	36.5 (1.437) / - / 4.0 (0.157)
E	Reverse Sequence Valve	10.0 (0.397) / 5.0 (0.197) / 3.2 (0.126)
F	Solenoid Modulator Valve	10.0 (0.397) / 5.0 (0.197) / 3.2 (0.126)
G	No. 2 Check Valve	10.0 (0.397) / 5.0 (0.197) / 3.2 (0.126)
H	No. 2 Check Valve	21.2 (0.835) / 5.0 (0.197) / 3.2 (0.126)
I	Secondary Regulator Valve	19.0 (0.748) / 5.0 (0.197) / 3.2 (0.126)
J	C - O Accumulator Valve	36.5 (1.437) / - / 4.0 (0.157)
K	3 - 4 Shift Valve	21.2 (0.835) / 5.0 (0.197) / 3.2 (0.126)
L	2 - 3 Shift Valve	21.2 (0.835) / 5.0 (0.197) / 3.2 (0.126)
M	1 - 2 Shift Valve	21.2 (0.835) / 5.0 (0.197) / 3.2 (0.126)

CHECK BALL



Mark	Check ball	Diameter mm (in.)
A	Rubber ball	6.35 (0.2500)
Except A	Rubber ball	5.54 (0.2181)