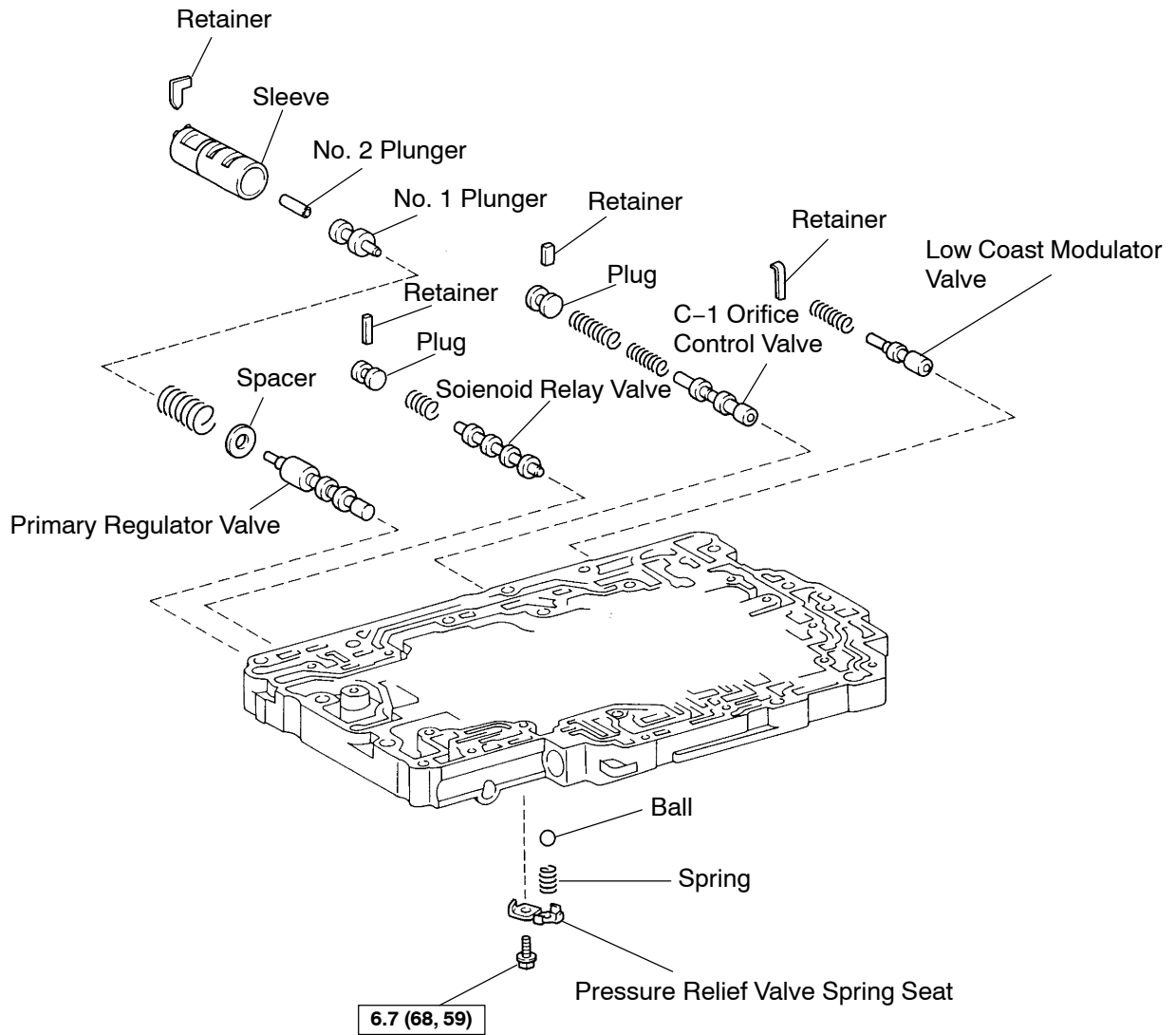


LOWER NO.1 VALVE BODY

AT0JF-01

LOCATION COMPONENTS



N

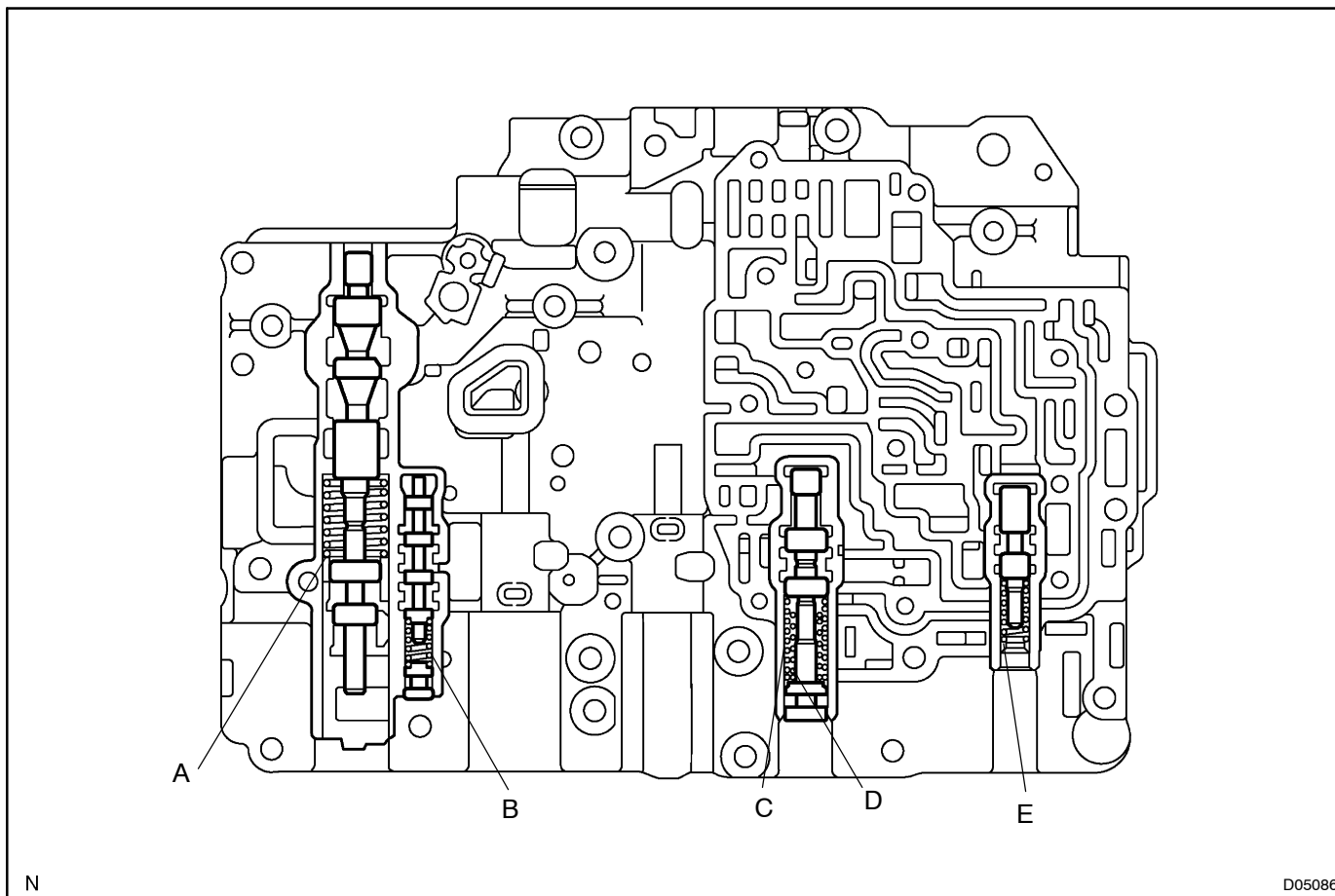
N·m (kgf·cm, in.·lbf) : Specified torque

D05084

SPRING

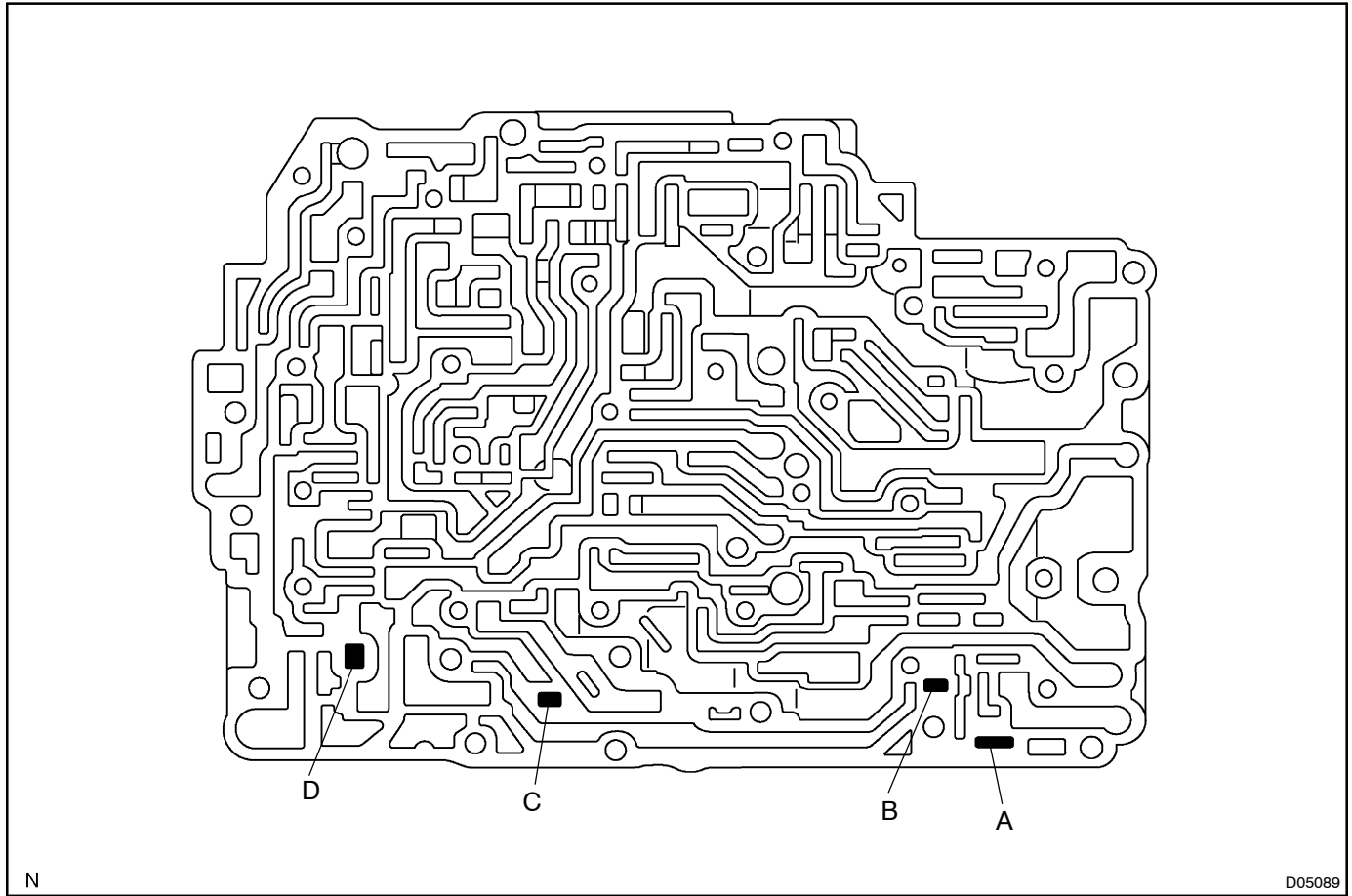
HINT:

During reassembly, please refer to the spring specifications below to help you differentiate among the different springs.



Mark	Name (Color)	Free length / Outer diameter mm (in.)	Total No. of coils
A	Primary Regulator Valve (Light blue)	37.38 (1.4717) / 18.88 (0.7433)	7.17
B	Cut Back Valve (None)	18.80 (0.7402) / 7.48 (0.2944)	7.50
C	C - 1 Orifice Control Valve (White)	37.13 (1.4618) / 11.14 (0.4386)	11.25
D	C - 1 Orifice Control Valve (Yellow)	19.77 (0.7783) / 7.76 (0.3055)	11.50
E	Low Coast Modulator Valve (Blue)	26.43 (1.0405) / 8.26 (0.3252)	10.51

RETAINER



N

D05089

Mark	Retainer	Height / Width / Thickness		
		mm (in.)		
A	Primary Regulator Valve	13.0 (0.512)	-	3.2 (0.126)
B	Cut Back Valve	19.0 (0.748)	5.0 (0.197)	3.2 (0.126)
C	C - 1 Orifice Control Valve	10.0 (0.394)	5.0 (0.197)	3.2 (0.126)
D	Low Coast Modulator Valve	21.5 (0.846)	-	1.4 (0.055)