

## INSPECTION

### 1. LHD models: INSPECT REAR WIPER AND WASHER SWITCH CONTINUITY

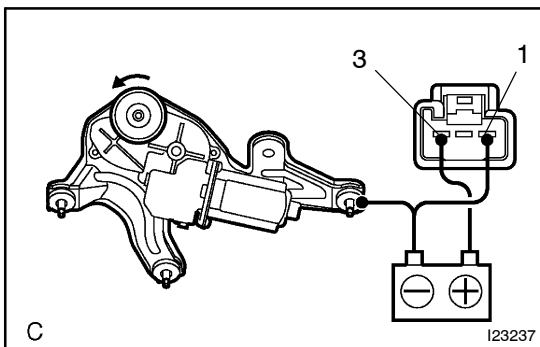
Switch position	Tester connection	Specified condition
OFF	-	Continuity
INT	2 - 13	Continuity
ON	2 - 10	Continuity
Washer OFF	-	No continuity
Washer ON	2 - 12	Continuity

If continuity is not as specified, replace the switch.

### 2. RHD models: INSPECT REAR WIPER AND WASHER SWITCH CONTINUITY

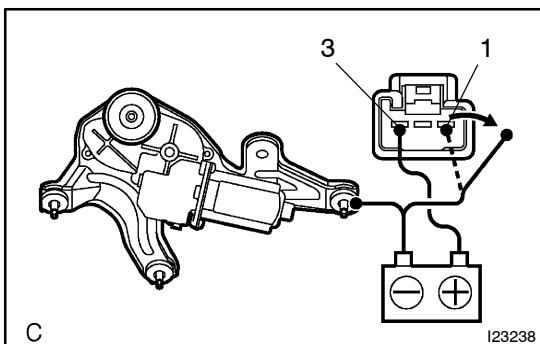
Switch position	Tester connection	Specified condition
OFF	-	Continuity
INT	8 - 15	Continuity
ON	8 - 18	Continuity
Washer OFF	-	No continuity
Washer ON	8 - 16	Continuity

If continuity is not as specified, replace the switch.



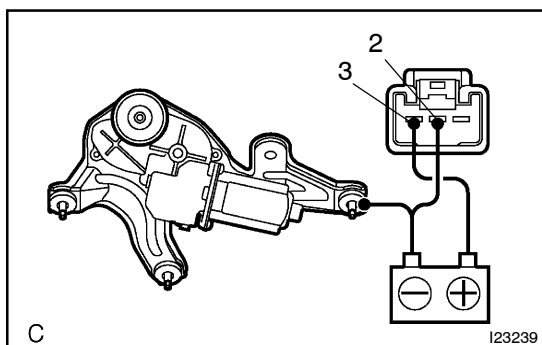
### 3. INSPECT REAR WIPER MOTOR OPERATION

- (a) Connect the positive (+) lead from the battery to terminal 3 and negative (-) lead to terminal 1 and the motor body, check that the motor operates.

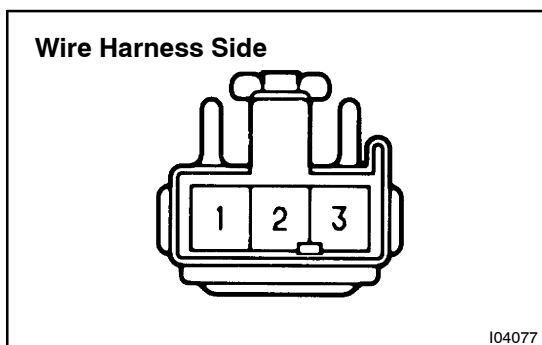


- (b) Disconnect the negative (-) lead from terminal 1, check that the motor stops running at the stop position.

If operation is not as specified, replace the motor.

**4. Intermittent:****INSPECT REAR WIPER MOTOR OPERATION**

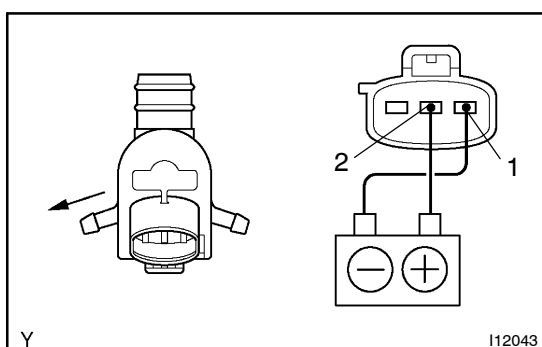
Connect the positive (+) lead from the battery to terminal 3 and the negative (-) lead to terminal 2 and the motor body, check that the motor operates intermittently for 9–15 seconds. If operation is not as specified, replace the motor.

**5. Connector disconnected:****INSPECT REAR WIPER MOTOR CIRCUIT**

Disconnect the connector from the motor and inspect the connector on the wire harness side, as shown.

Tester connection	Condition	Specified condition
1 - Ground	Constant	Continuity
2 - Ground	Constant	Continuity
3 - Ground	Ignition switch OFF or ACC	No voltage
3 - Ground	Ignition switch ON	Battery positive voltage

If circuit is not as specified, inspect the circuits connected to other parts.

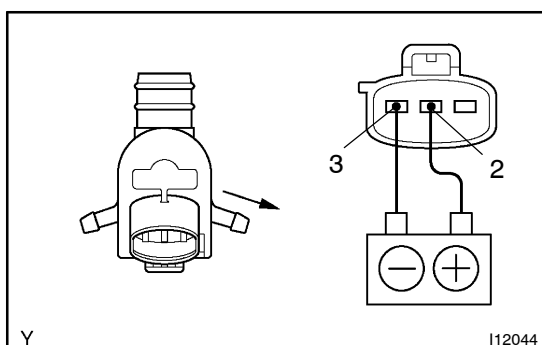
**6. Wagon:****INSPECT FRONT WASHER MOTOR OPERATION**

Connect the positive (+) lead from the battery to terminal 2 and the negative (-) lead to terminal 1, check that the motor operates.

**NOTICE:**

**These tests must be performed quickly (within 20 seconds) to prevent the coil from burning out.**

If operation is not as specified, replace the motor.

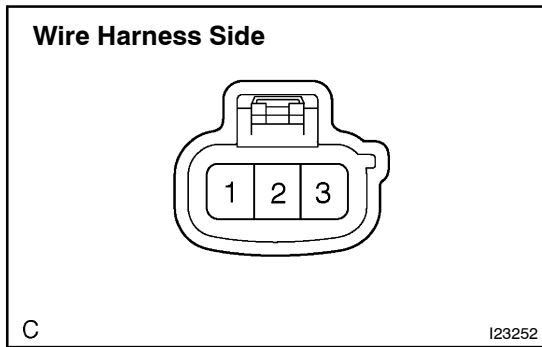
**7. INSPECT REAR WASHER MOTOR OPERATION**

Connect the positive (+) lead from the battery to terminal 2 and the negative (-) lead to terminal 3, check that the motor operates.

**NOTICE:**

**These tests must be performed quickly (within 20 seconds) to prevent the coil from burning out.**

If operation is not as specified, replace the motor.



**8. Connector disconnected:  
INSPECT WASHER MOTOR CIRCUIT**

Disconnect the connector from the motor and inspect the connector on the wire harness side, as shown.

Tester connection	Condition	Specified condition
2 - Ground	Ignition switch ON	Battery positive voltage

If circuit is not as specified, inspect the power source, wire harness and wiper switch.