

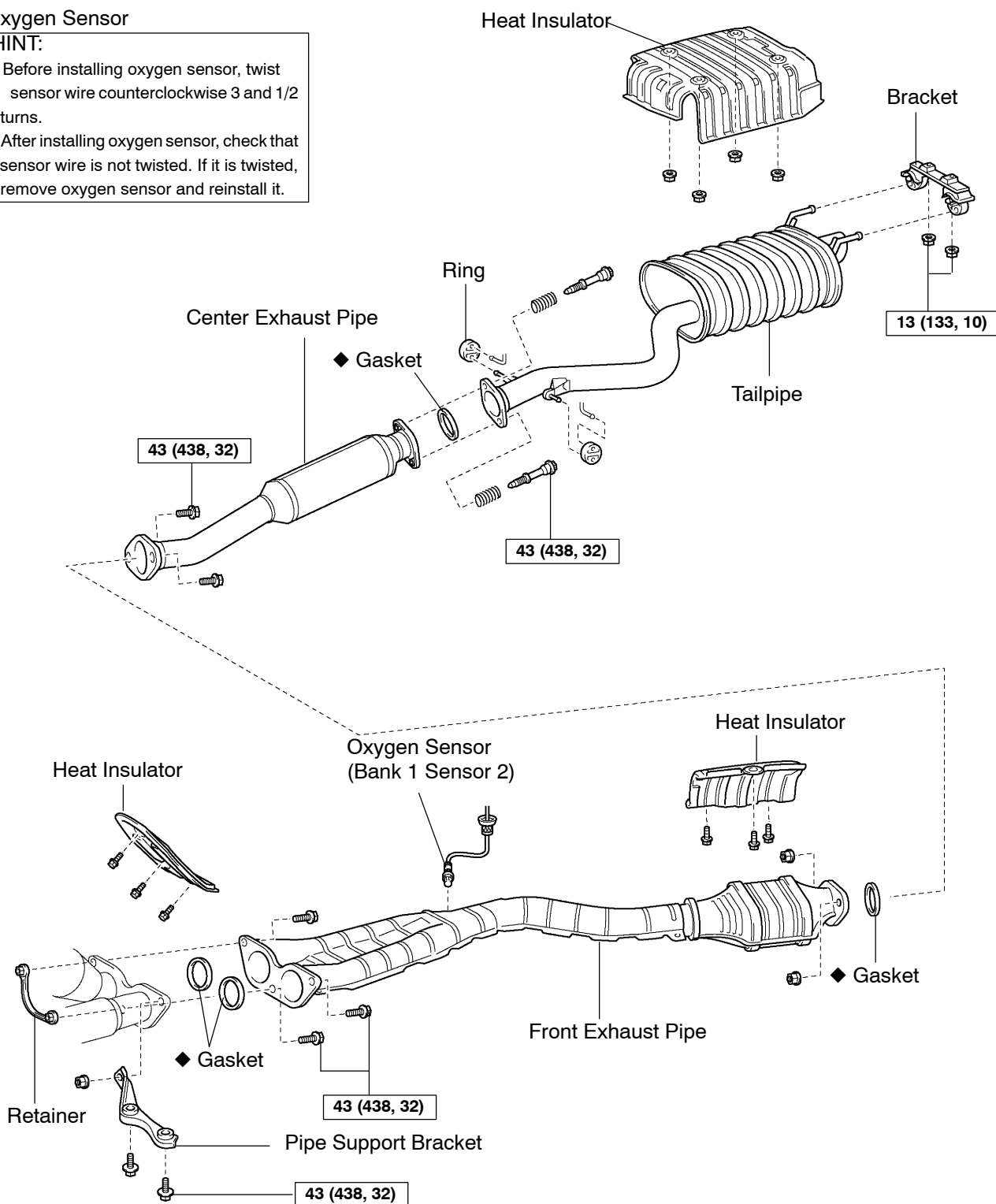
EXHAUST SYSTEM COMPONENTS

EM00-07

Oxygen Sensor

HINT:

- Before installing oxygen sensor, twist sensor wire counterclockwise 3 and 1/2 turns.
- After installing oxygen sensor, check that sensor wire is not twisted. If it is twisted, remove oxygen sensor and reinstall it.



N·m (kgf·cm, ft·lbf) : Specified torque

◆ Non-reusable part

A17115