

DISASSEMBLY

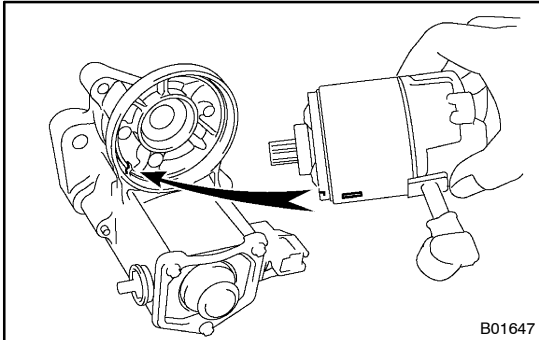
1. REMOVE FIELD FRAME AND ARMATURE

- (a) Remove the nut, and disconnect the lead wire from the magnetic switch terminal.

Torque: 5.9 N·m (60 kgf·cm, 52 in.·lbf)

- (b) Remove the 2 through bolts.

Torque: 5.9 N·m (60 kgf·cm, 52 in.·lbf)



- (c) Pull out the field frame together with the armature.

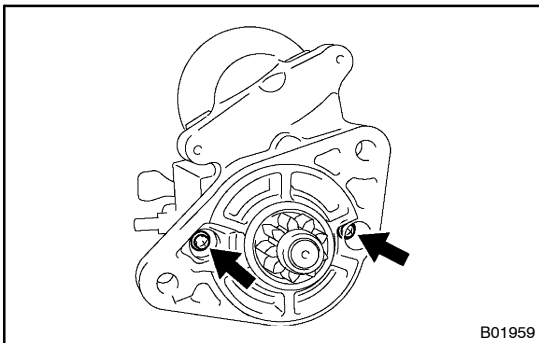
HINT:

Align the protrusion of the field frame with the groove of the magnetic switch.

- (d) Remove the O-ring from the field frame.

HINT:

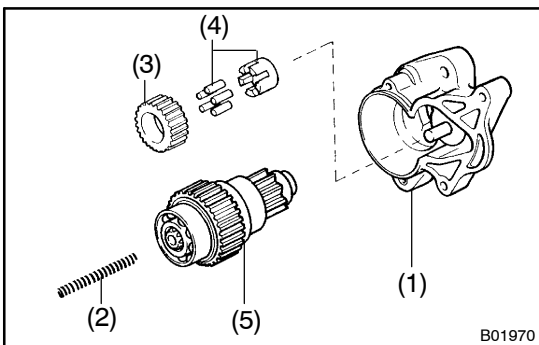
At the time of installation, please refer to the following items. Use a new O-ring.



2. REMOVE STARTER HOUSING, CLUTCH ASSEMBLY AND GEAR

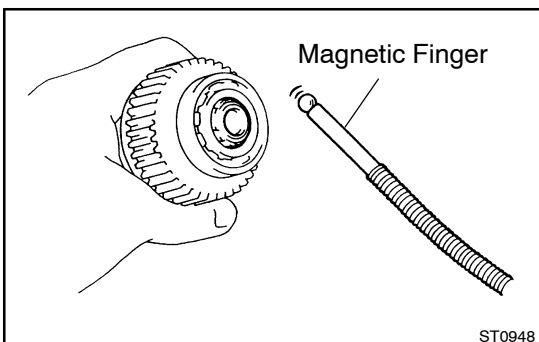
- (a) Remove the 2 bolts.

Torque: 5.9 N·m (60 kgf·cm, 52 in.·lbf)



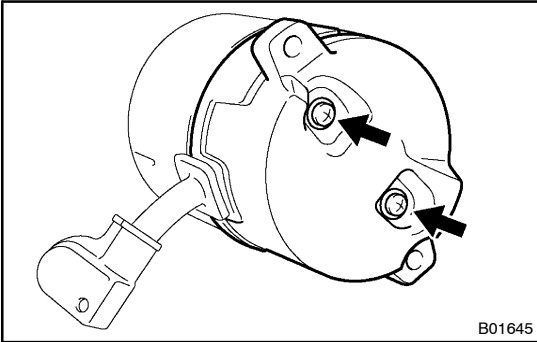
- (b) Remove these parts from the magnetic switch:

- (1) Starter housing
- (2) Return spring
- (3) Idler gear
- (4) Bearing
- (5) Clutch assembly



3. REMOVE STEEL BALL

Using a magnetic finger, remove the steel ball from the clutch shaft hole.

**4. REMOVE BRUSH HOLDER**

(a) Remove the 2 screws and end cover from the field frame.

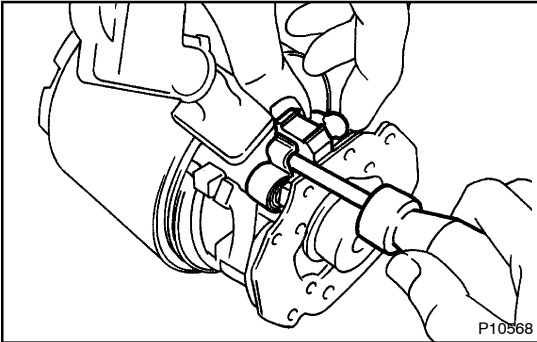
Torque: 1.5 N·m (15 kgf·cm, 13 in·lbf)

(b) Remove the O-ring from the field frame.

HINT:

At the time of installation, please refer to the following items.

Use a new O-ring.



(c) Using a screwdriver, hold the spring back and disconnect the brush from the brush holder. Disconnect the 4 brushes, and remove the brush holder.

NOTICE:

Check that the positive (+) lead wires are not grounded.

5. REMOVE ARMATURE FROM FIELD FRAME