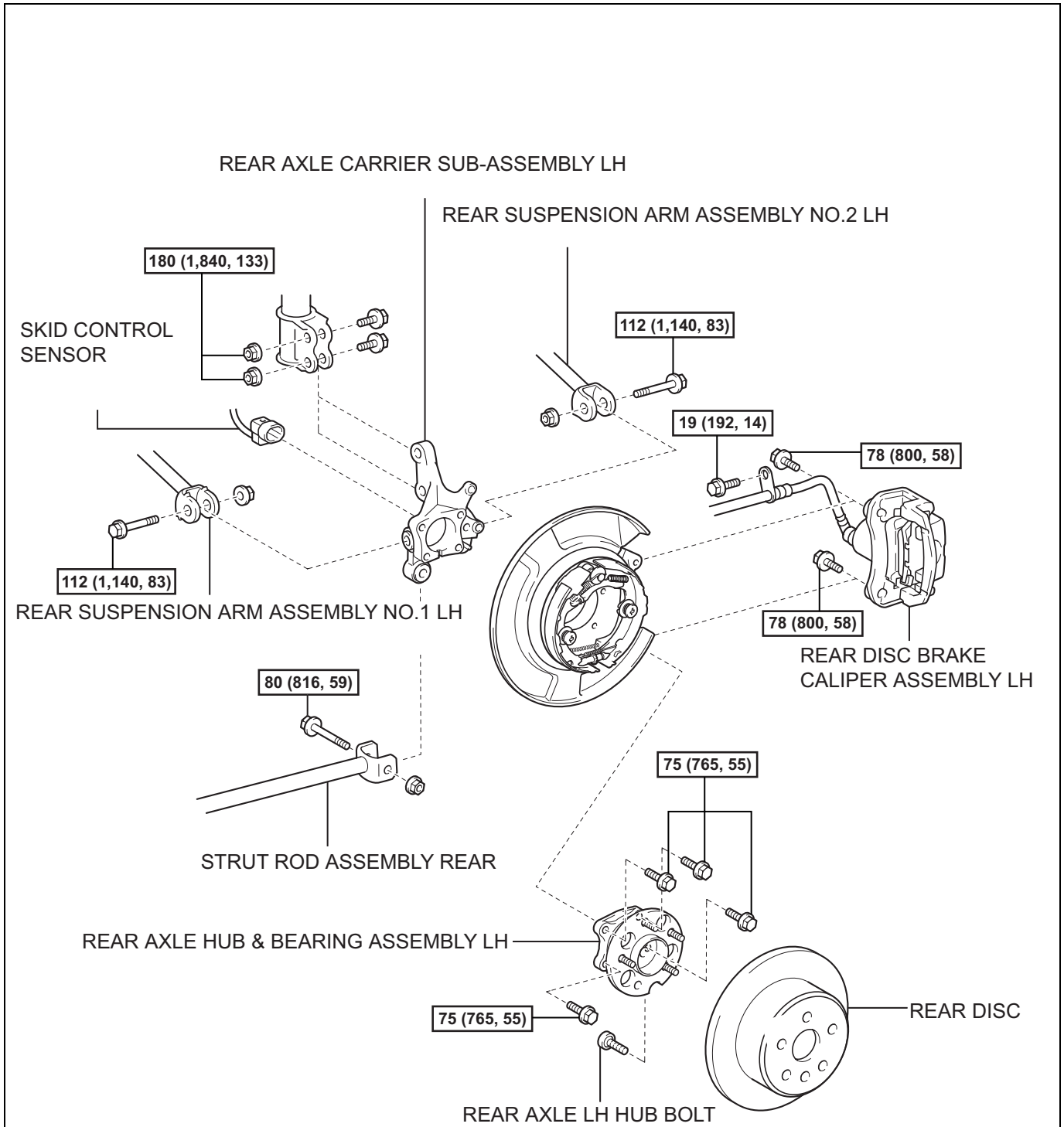


# REAR AXLE CARRIER (for 2WD)

## COMPONENTS



**N\*m (kgf\*cm, ft.\*lbf)** : Specified torque

● Non-reusable part

**AH**

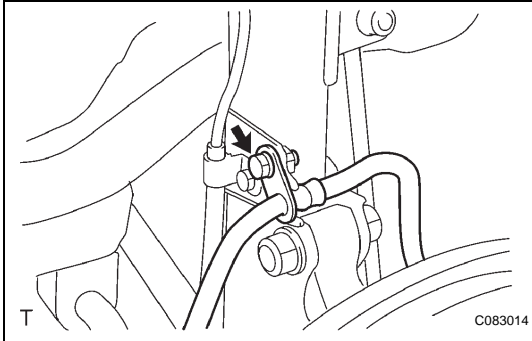
## REMOVAL

### HINT:

Replace the RH side using the same procedures as for the LH side.

1. REMOVE REAR WHEEL
2. SEPARATE REAR DISC BRAKE CALIPER ASSEMBLY LH

(a) Remove the bolt, and separate the flexible hose from the shock absorber.



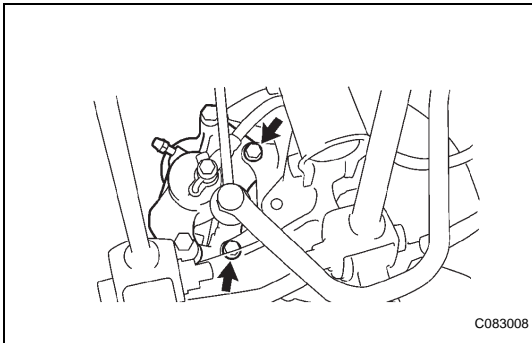
(b) Remove the 2 bolts and separate the rear disc brake caliper assembly.

### NOTICE:

Use a string or other device to keep the brake caliper from hanging down.

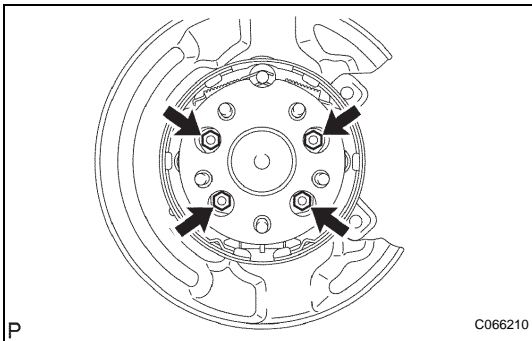
3. REMOVE REAR DISC
4. DISCONNECT SKID CONTROL SENSOR

(a) Disconnect the connector.



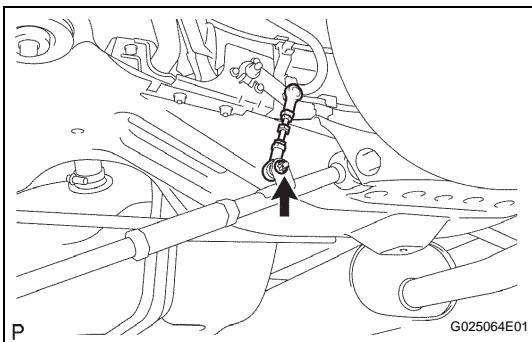
5. REMOVE REAR AXLE HUB & BEARING ASSEMBLY LH

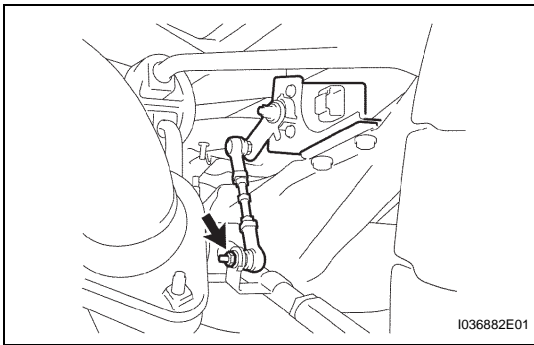
(a) Remove the 4 bolts and hub & bearing assembly LH.



6. SEPARATE HEIGHT CONTROL SENSOR SUB-ASSEMBLY REAR

(a) Remove the nut, and separate the height control sensor sub-assembly from suspension arm assembly No. 2(w/ air suspension)





**7. SEPARATE HEIGHT CONTROL SENSOR SUB-ASSEMBLY REAR**

- (a) Remove the nut and separate the height control link (w/ discharge head light).

HINT:

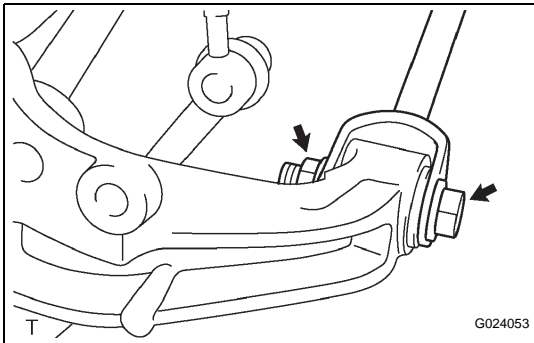
Perform the procedure only when removing the RH side.

**8. SEPARATE STRUT ROD ASSEMBLY REAR**

- (a) Remove the bolt and nut, and the strut rod assembly rear (rear axle carrier side) from rear axle carrier.

HINT:

When removing the bolt, keep the nut from rotating.

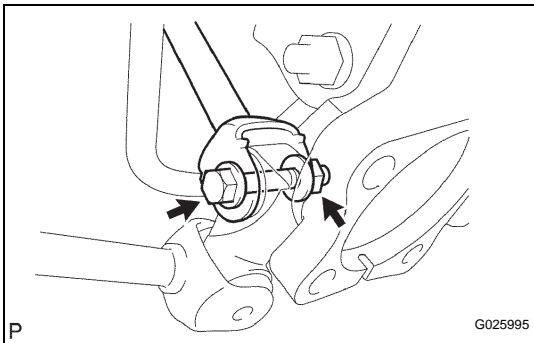


**9. SEPARATE REAR SUSPENSION ARM ASSEMBLY NO.2 LH**

- (a) Remove the bolt and nut, and separate the rear suspension arm assembly No. 2 (rear axle carrier side) from the rear axle carrier.

HINT:

When removing the bolt, keep the nut from rotate.

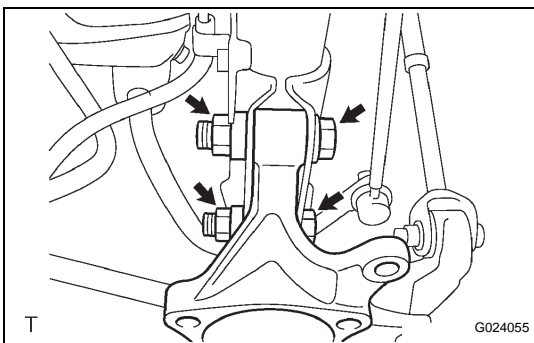


**10. SEPARATE REAR SUSPENSION ARM ASSEMBLY NO.1 LH**

- (a) Remove the bolt and nut, separate the rear suspension arm assembly No. 1 (rear axle carrier side) from the rear axle carrier.

HINT:

When removing the bolt, keep the nut from rotate.



**11. REMOVE REAR AXLE CARRIER SUB-ASSEMBLY LH**

- (a) Remove the 2 bolts and nuts, and remove the rear axle carrier from the shock absorber.