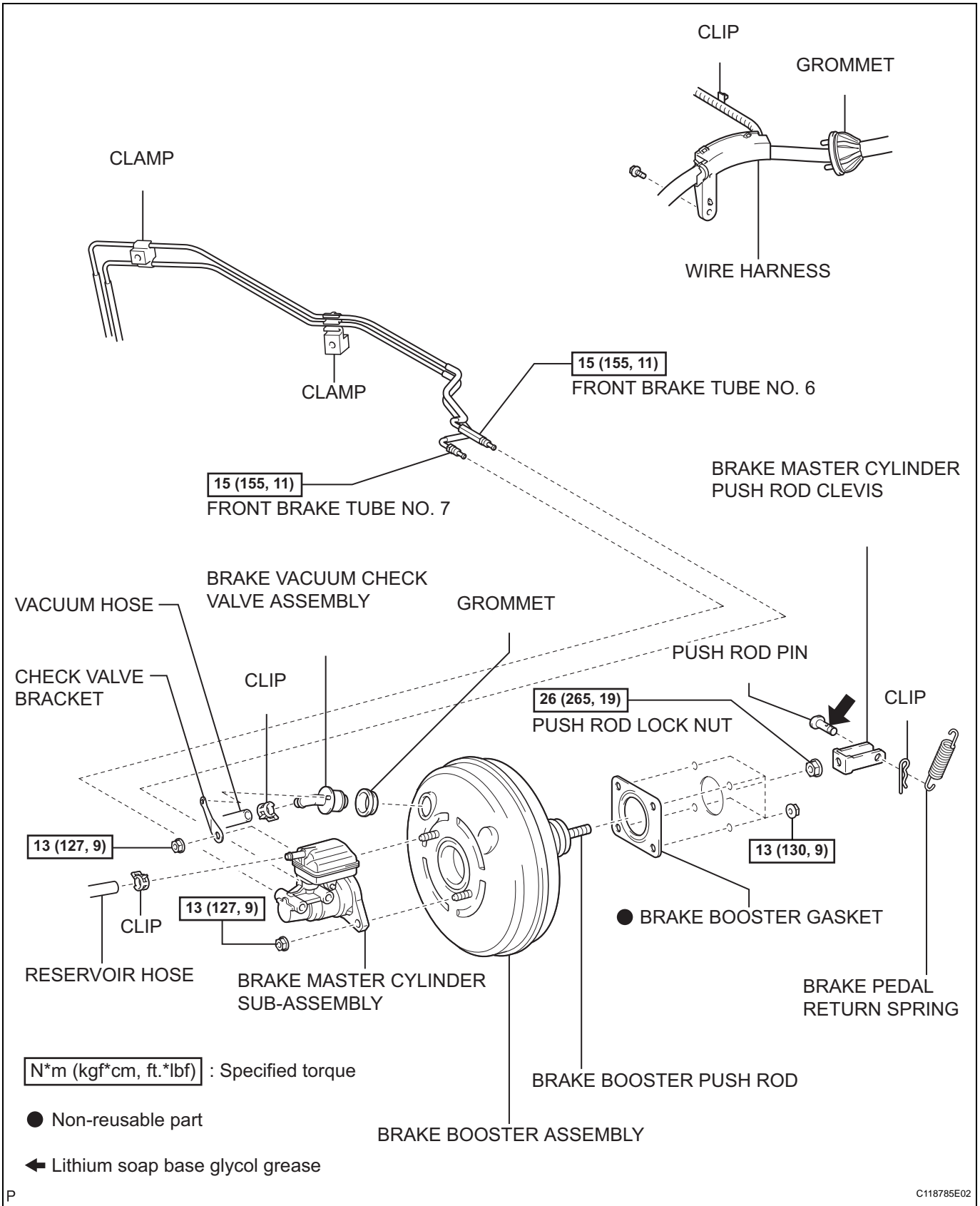


# BRAKE BOOSTER COMPONENTS



## ON-VEHICLE INSPECTION

### 1. INSPECT BRAKE BOOSTER

#### (a) Airtightness check.

- (1) Start the engine and stop it after 1 or 2 minutes. Depress the brake pedal several times slowly.

#### HINT:

If the pedal can be depressed to the floor the first time, but on the 2nd or 3rd time cannot be depressed as far, the booster is airtight.

- (2) Depress the brake pedal while the engine is running, and stop the engine with the pedal depressed.

#### HINT:

If there is no change in the pedal reserve distance after holding the pedal for 30 seconds, the booster is airtight.

#### (b) Operating check.

- (1) Depress the brake pedal several times with the ignition switch off and check that there is no change in the pedal reserve distance.

- (2) Depress the brake pedal and start the engine.

#### HINT:

If the pedal goes down slightly, operation is normal.

