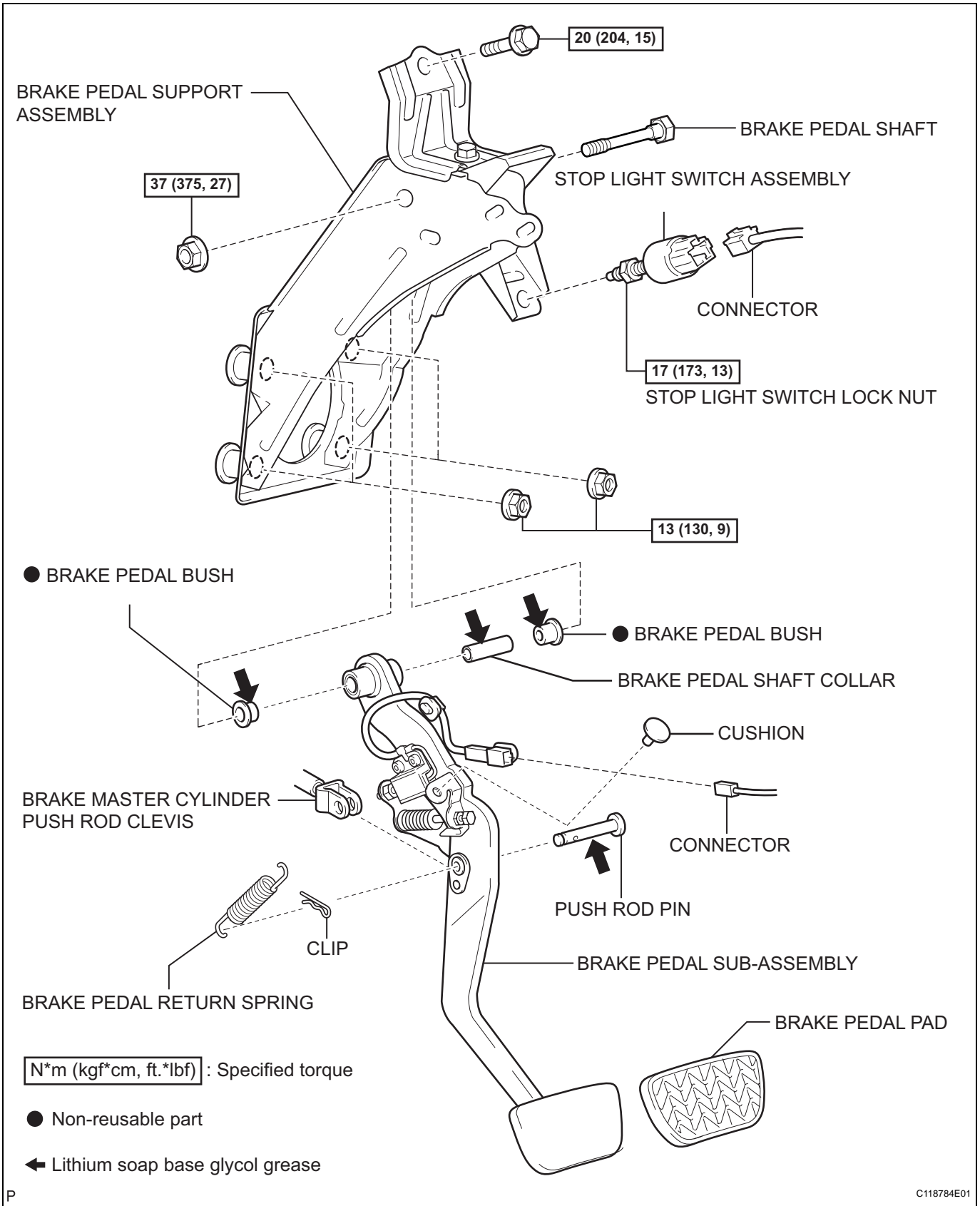


# BRAKE PEDAL

## COMPONENTS



## REMOVAL

1. REMOVE FRONT DOOR SCUFF PLATE LH
2. REMOVE INSTRUMENT PANEL FINISH PANEL SUB-ASSEMBLY LOWER

HINT:

See page [IP-10](#).

3. REMOVE DRIVER SIDE KNEE AIRBAG ASSEMBLY

HINT:

See page [RS-403](#).

4. REMOVE INSTRUMENT CLUSTER FINISH PANEL SUB-ASSEMBLY

HINT:

See page [IP-10](#).

5. REMOVE COMBINATION METER ASSEMBLY

HINT:

See page [ME-40](#).

6. REMOVE BRAKE PEDAL RETURN SPRING

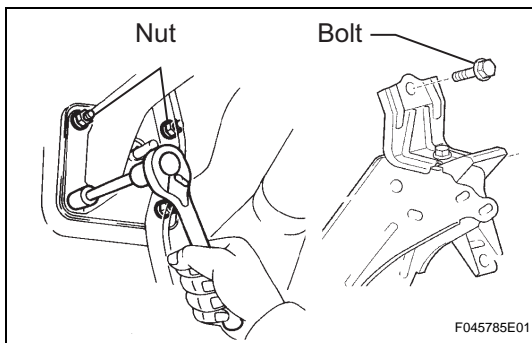
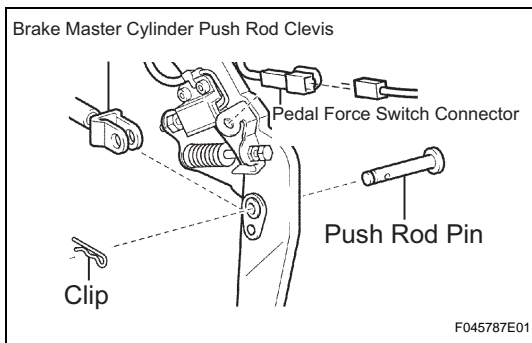
(a) Remove the brake pedal return spring.

7. REMOVE PUSH ROD PIN

(a) Remove the clip and the push rod pin.

(b) Disconnect the stop light switch connector.

(c) Disconnect the pedal force switch connector and release the clip of the pedal force switch.



8. REMOVE BRAKE PEDAL SUPPORT ASSEMBLY

(a) Remove the bolt, the 4 nuts and the brake pedal support assembly.

9. REMOVE BRAKE PEDAL SUB-ASSEMBLY

(a) Remove the nut, the brake pedal shaft and the brake pedal sub-assembly from the brake pedal support sub-assembly.