

<b>DTC</b>	<b>U0122</b>	<b>Lost Communication with Vehicle Dynamics Control Module</b>
------------	--------------	--

**DESCRIPTION**

The ABS & traction actuator assembly (skid control ECU) and ECM transmit the data for vehicle general control and diagnosis function along the communication line.

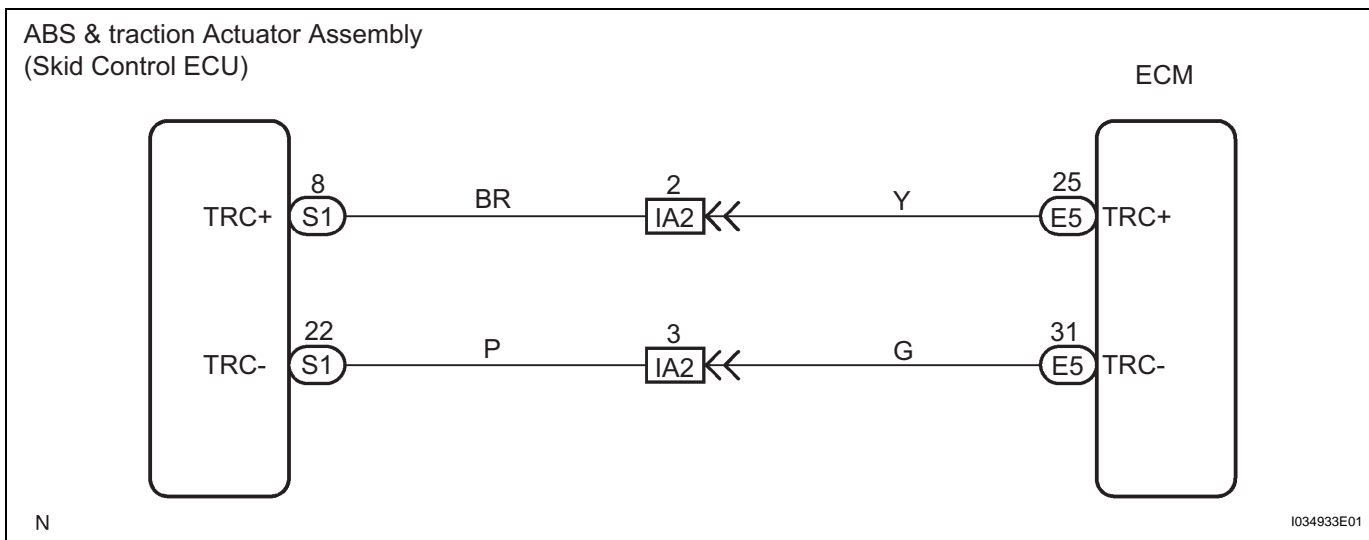
The dynamic laser cruise control system receives information about the laser radar sensor, steering angle sensor and yaw rate sensor from the ABS & traction actuator assembly (skid control ECU). It identifies the vehicle in front and follows it keeping a proper vehicle-to-vehicle distance.

When the ABS & traction actuator assembly (skid control ECU) receives the steering angle signal from the steering angle and the acceleration / deceleration signal from the yaw rate sensor, it transmits them to the ECM.

DTC No.	DTC Detecting Condition	Trouble Area
U0122/64	The malfunction code is output when communication between the ABS & traction actuator assembly (skid control ECU) and ECM is invalid for 0.5 sec. or more while the laser radar sensor is in operation, or the communication from the ABS & traction actuator assembly (skid control ECU) becomes logically discordant for 0.5 sec. or more.	<ul style="list-style-type: none"> <li>• Communication circuit</li> <li>• ABS &amp; traction actuator assembly (Skid control ECU)</li> <li>• ECM</li> </ul>

**CC**

**WIRING DIAGRAM**



**1 CHECK WIRE HARNESS AND CONNECTOR (ECM - SKID CONTROL ECU)**

- (a) Check for an open or short circuit in harness and connector between the ECM and the skid control ECU (See page IN-36).

**NG** → **REPAIR OR REPLACE WIRE HARNESS OR CONNECTOR**

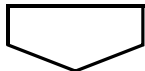
**OK**

**2****REPLACE ABS AND TRACTION ACTUATOR ASSEMBLY (SKID CONTROL ECU)**

HINT:

If the problem still occurs after the replacement, replace the ECM.

When a malfunction is detected in the skid control ECU, replace the ABS & traction actuator assembly.

**REPLACE ECM**