

Wiper Signal Circuit

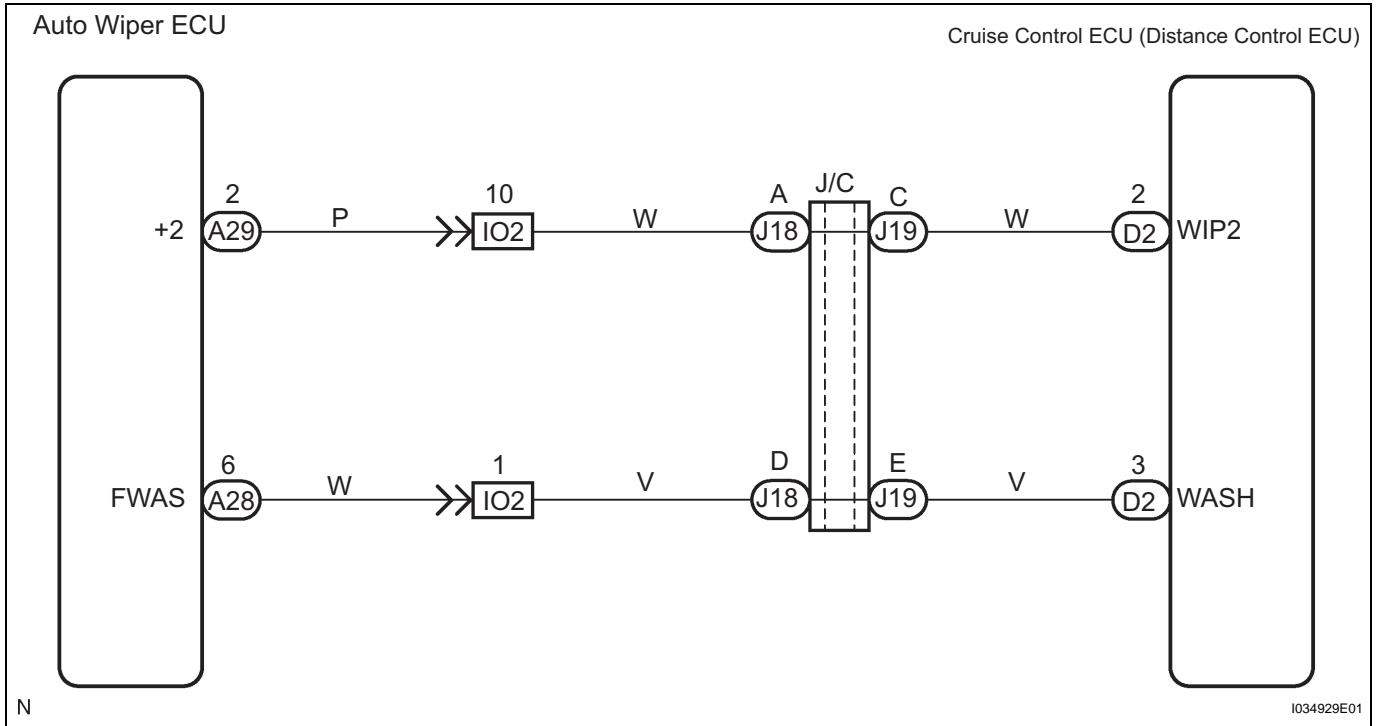
DESCRIPTION

When the cruise control ECU (distance control ECU) detects the wipers are operating, the dynamic laser cruise control system will be canceled.

HINT:

When the wiper is in the LO or HI mode, the dynamic laser cruise control is automatically canceled and goes into the standby mode (In INT (intermittent operation) mode, the laser cruise control is not canceled).

WIRING DIAGRAM



1 INSPECT WIPER AND WASHER SYSTEM

Standard:
Wiper function is normal.

NG → GO TO WIPER AND WASHER SYSTEM

OK

2 CHECK WIRE HARNESS AND CONNECTOR (DISTANCE CONTROL ECU - AUTO WIPER ECU)

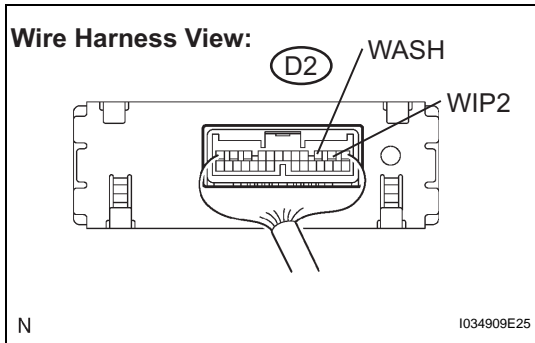
(a) Check for an open or short circuit in harness and connector between the distance control ECU and the auto wiper ECU (See page IN-36).

NG → REPAIR OR REPLACE WIRE HARNESS OR CONNECTOR

CC

OK

3 INSPECT CRUISE CONTROL ECU ASSEMBLY



- (a) Remove the cruise control ECU (distance control ECU) with the connector.
- (b) Turn the ignition switch to the ON position.
- (c) Measure the voltage between terminal WIP2 (D2-2) and WASH (D2-3) of cruise control ECU (distance control ECU), when combination switch is operated.

Voltage

Switch	Position	Specified value
Wiper Switch	OFF	Below 1 V
Wiper Switch	HI	10 to 14 V
Washer Switch	OFF	10 to 14 V
Washer Switch	ON	Below 1 V

CC

NG

REPLACE CRUISE CONTROL ECU ASSEMBLY

OK

PROCEED TO NEXT CIRCUIT INSPECTION SHOWN IN PROBLEM SYMPTOMS TABLE