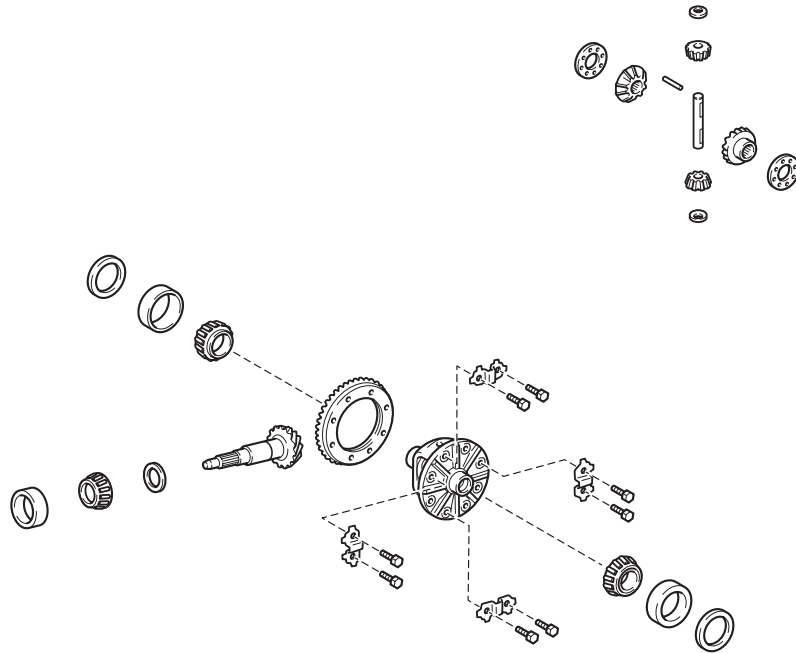


REAR DIFFERENTIAL CARRIER OIL SEAL

COMPONENTS



REAR DRIVE PINION
FRONT TAPERED
ROLLER BEARING

REAR DIFFERENTIAL
DRIVE PINION OIL
SLINGER

● REAR DIFFERENTIAL
DUST DEFLECTOR

● REAR DRIVE PINION NUT

REAR DRIVE PINION
COMPANION FLANGE
SUB-ASSEMBLY REAR

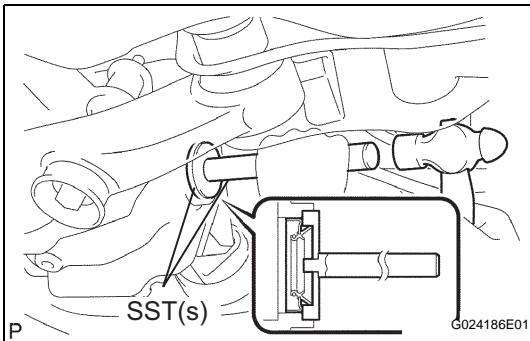
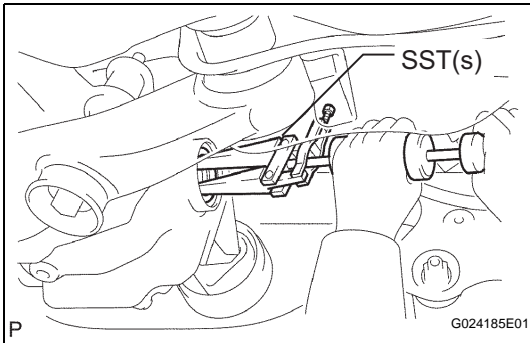
● REAR DIFFERENTIAL
DRIVE PINION
BEARING SPACER

● Non-reusable part ⇐ Apply MP grease

DF

REMOVAL

1. **REMOVE REAR WHEEL**
2. **REMOVE EXHAUST PIPE ASSEMBLY**
HINT:
(See page [EX-3](#))
3. **REMOVE REAR DIFFERENTIAL FILLER PLUG**
(a) Using a hexagon wrench (10 mm), remove the filler plug and gasket.
4. **REMOVE REAR DIFFERENTIAL DRAIN PLUG**
(a) Using a hexagon wrench (10 mm), remove the drain plug and gasket, and drain the oil.
5. **REMOVE REAR DRIVE SHAFT ASSEMBLY LH**
HINT:
(See page [DS-21](#))
6. **REMOVE REAR DIFFERENTIAL SIDE GEAR SHAFT SEAL OIL**
(a) Using SST(s), remove the oil seal.
SST 09308-00010



INSTALLATION

1. **INSTALL REAR DIFFERENTIAL SIDE GEAR SHAFT SEAL OIL**
(a) Using SST(s) and a hammer, install a new oil seal until it is flush with the carrier end surface.
SST 09550-00032, 09950-70010 (09951-07200)
(b) Apply MP grease to the oil seal lip.
2. **INSTALL REAR DRIVE SHAFT ASSEMBLY LH**
HINT:
(See page [DS-27](#))
3. **INSTALL EXHAUST PIPE ASSEMBLY**
HINT:
(See page [EX-6](#))
4. **INSTALL REAR DIFFERENTIAL DRAIN PLUG**
(a) Using a hexagon wrench (10 mm), install the filler plug with a new gasket.
Torque: 49 N*m (500 kgf*cm, 36 ft.*lbf)
5. **ADD DIFFERENTIAL OIL**
(a) Fill the rear differential carrier assembly with hypoid gear oil.
6. **INSPECT DIFFERENTIAL OIL**
HINT:
(See page [DF-3](#))

7. **INSTALL REAR DIFFERENTIAL FILLER PLUG**
 - (a) Using a hexagon wrench (10 mm), install the filler plug with a new gasket.
Torque: 49 N*m (500 kgf*cm, 36 ft.*lbf)
8. **INSTALL REAR WHEEL**
Torque: 103 N*m (1,050 kgf*cm, 76 ft.*lbf)
9. **INSPECT AND ADJUST REAR WHEEL ALIGNMENT**
HINT:
(See page [SP-7](#))
10. **CHECK FOR EXHAUST GAS LEAKAGE**
HINT:
(See page [EX-6](#))
11. **ADJUST VEHICLE HEIGHT**
HINT:
(See page [SC-15](#))
12. **ADJUST HEADLIGHT AIMING (w/ HID)**
HINT:
(See page [LI-14](#))
13. **CHECK ABS SPEED SENSOR SIGNAL**
HINT:
(See page [BC-18](#))