

## REGISTRATION

### HINT:

- Register the recognition code when replacing the door control transmitter or the door control receiver.
- Add mode is used to register new recognition codes while still retaining codes already registered. This mode is used when a new transmitter is added. If the number of registered codes exceeds 4, the previously registered codes will be erased in order, starting from the first registered code.
- Rewrite mode is used to erase all the previously registered recognition codes in order to register all-new recognition codes. This mode is used when the transmitter or the door control receiver is replaced with a new one.
- Confirmation mode is used to confirm how many recognition codes have already been registered before another recognition code is registered.
- Prohibition mode is used to erase all the registered codes and disable the wireless door lock function. This mode is used when the transmitter is lost.
- All the following registration procedures must be performed in order.

### 1. PROCEDURE FOR RECOGNITION CODE REGISTRATION (MANUAL OPERATION:)

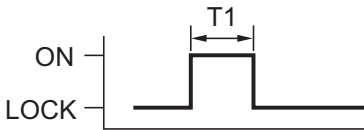
- (a) Ensure that the following conditions are met:
  - (1) No key is in the ignition key cylinder.
  - (2) Driver side door is open (Other doors are closed).
  - (3) Driver side door is unlocked.
- (b) When the above conditions are met, perform the following:
  - (1) Insert and remove the key from the ignition key cylinder twice.  
HINT:  
Complete this step within 5 seconds.
  - (2) Close and open the driver side door twice.
  - (3) Insert and remove the key from the ignition key cylinder.  
HINT:  
Complete this step within 40 seconds.
  - (4) Close and open the driver side door twice.
  - (5) Insert the key into the ignition key cylinder and close all doors.  
HINT:  
Complete this step within 40 seconds.

- (6) Turn the ignition switch from the ON to the LOCK position at approximately 1 second intervals according to the number of times shown below.

### Number of ON-LOCK Operations of the Ignition Switch

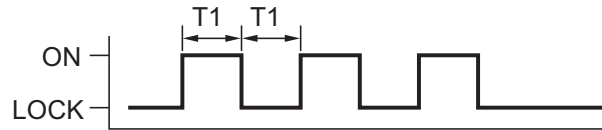
#### Add Mode:

ON-LOCK operation: 1 time



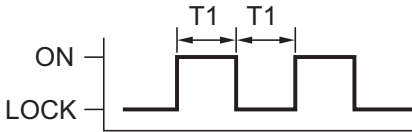
#### Confirmation Mode:

ON-LOCK operation: 3 times



#### Rewrite Mode:

ON-LOCK operation: 2 times



#### Prohibition Mode:

ON-LOCK operation: 5 times



T1: Approx. 1 second

B110068E02

DL

N

#### HINT:

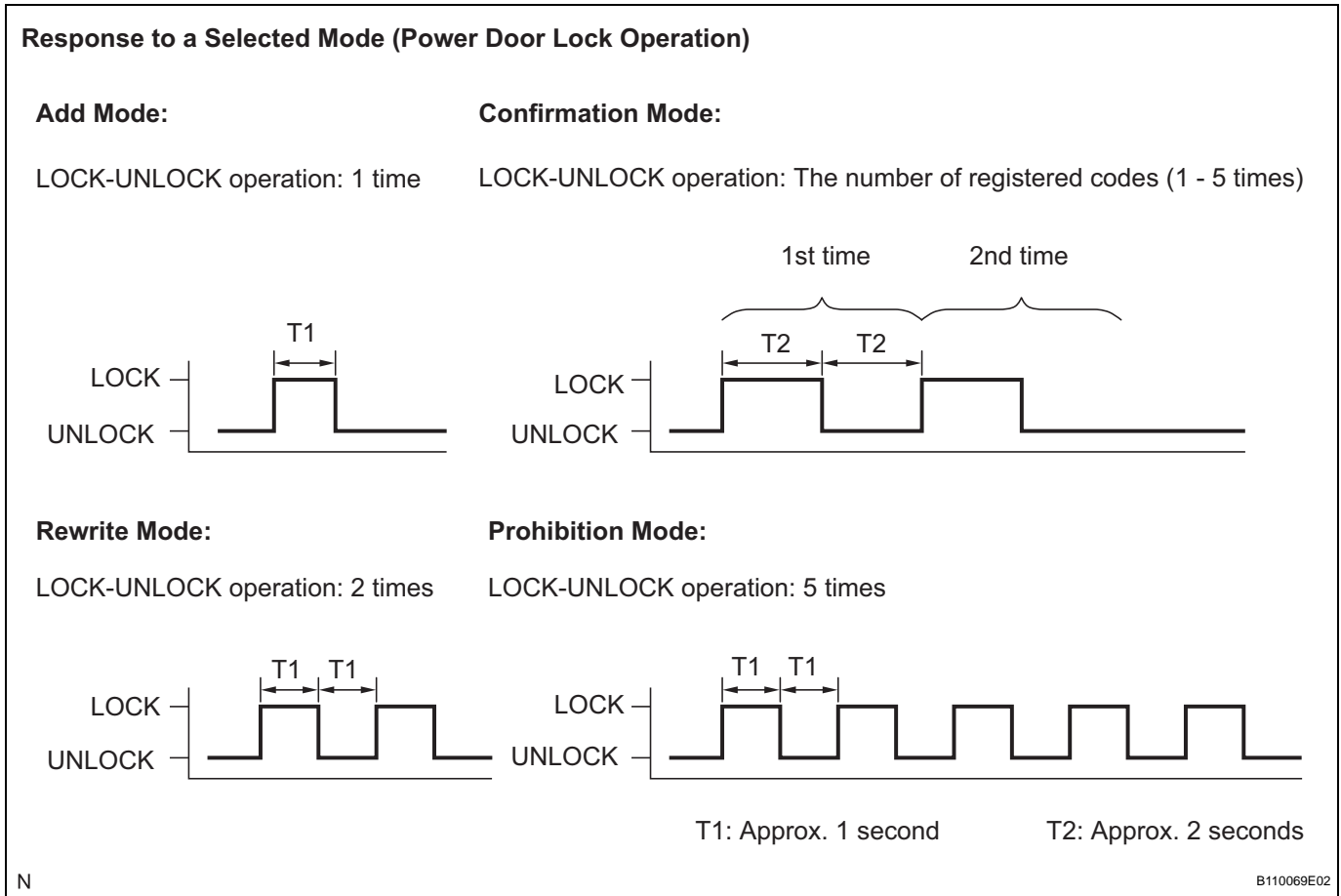
If the number of ON-LOCK operations of the ignition switch is 0, 4 or 6 or more, there will be no response (power door lock and unlock operation) to show which mode has been selected.

- (7) Remove the key from the ignition key cylinder.

#### HINT:

Complete this step within 40 seconds.

- (8) The body ECU automatically performs the power door LOCK-UNLOCK operation within 3 seconds after the mode has been selected and informs the technician of the selected mode using the following response patterns.

**HINT:**

- When the confirmation mode or prohibition mode has been selected, the registration procedure will be completed.
- In the confirmation mode, when the LOCK-UNLOCK operation is performed twice, the number of registered recognition codes is 2.
- In the confirmation mode, when 0 codes are registered, the LOCK-UNLOCK operation is automatically performed 5 times.

- (c) Registration of the door control transmitter.
- (1) If the add mode or rewrite mode has been selected, press LOCK and UNLOCK on the transmitter simultaneously.
  - (2) Press either of the switches on the door control transmitter again.

**HINT:**

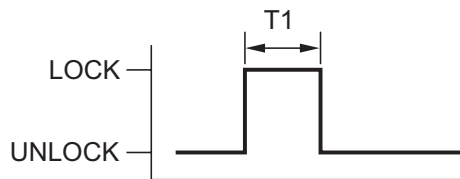
- Switches must be pressed for at least 1 second each time. The second operation must be performed within 3 seconds after the first operation.

- A recognition code must be registered in the door control transmitter within 40 seconds after a selected mode is responded to.
- (3) The body ECU automatically performs the power door LOCK-UNLOCK operation within 3 seconds after the switch on the door control transmitter is turned off, in order to indicate whether registration has been completed correctly or not.

### Response to Registration Completion

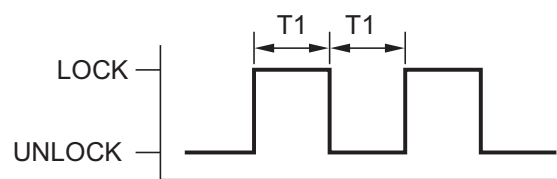
#### LOCK-UNLOCK Occurs Once:

Registration of recognition code has been completed.



#### LOCK-UNLOCK Occurs Twice:

Registration of recognition code has failed.



T1: Approx. 1 second

N

B110067E03

#### HINT:

If the LOCK-UNLOCK operation is performed twice, registration of the recognition code has failed. Perform registration procedures from the beginning once again.

- (4) If registration is continued, the next recognition code must be registered in the door control transmitter within 40 seconds.
- HINT:  
Up to four recognition codes can be registered.
- (d) Completing the registration mode.
- (1) The registration mode will cease when any of the following occurs:
- 40 seconds or more have elapsed after a previous registration mode is input.
  - Any of the doors is opened.
  - The key is inserted into the ignition key cylinder.
- (e) Perform the following after registration is completed.
- (1) Perform the wireless door lock control operation check (See page [DL-63](#)).
- HINT:  
If the wireless door lock control does not operate, perform the registration procedure again.

## 2. PROCEDURE FOR RECOGNITION CODE REGISTRATION (USING INTELLIGENT TESTER:)

- (a) Turn the ignition switch to the ON position.

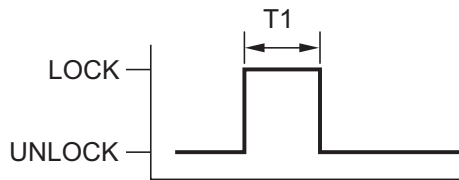
- (b) Select the add or rewrite mode according to the intelligent tester display.
- (c) The number of registered codes is indicated.
- (d) Registration of the door control transmitter.
  - (1) If the add mode or rewrite mode has been selected, press LOCK and UNLOCK on the transmitter simultaneously.
  - (2) Press either of the switches on the door control transmitter again.
 

HINT:  
Switches must be pressed for at least 1 second each time. The second operation must be performed within 3 seconds after the first operation.
  - (3) The body ECU automatically performs the power door LOCK-UNLOCK operation after the switch on the door control transmitter is turned off, in order to indicate whether registration has been completed correctly or not.

### Response to Registration Completion

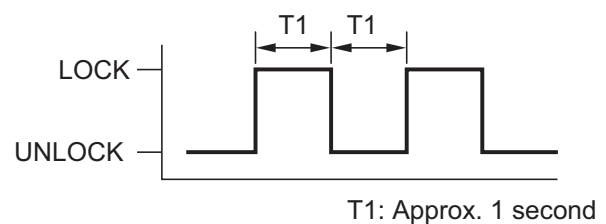
#### LOCK-UNLOCK Occurs Once:

Registration of recognition code has been completed.



#### LOCK-UNLOCK Occurs Twice:

Registration of recognition code has failed.



T1: Approx. 1 second

N

B110067E03

#### HINT:

If the LOCK-UNLOCK operation is performed twice, registration of the recognition code has failed. Perform registration procedures from the beginning once again.

- (4) If registration is continued, the next recognition code must be registered in the door control transmitter within 40 seconds.
 

HINT:  
Up to four recognition codes can be registered.
- (e) Completing the registration mode.
  - (1) The registration mode will cease when any of the following occurs:
    - 40 seconds or more have elapsed after a previous registration mode is input.
    - The intelligent tester is used to order completion.
    - The intelligent tester is disconnected.

DL

- (f) Perform the following after registration is completed.
  - (1) Perform the wireless door lock control operation check (See page [DL-63](#)).  
HINT:  
If the wireless door lock control does not operate, perform the registration procedure again.