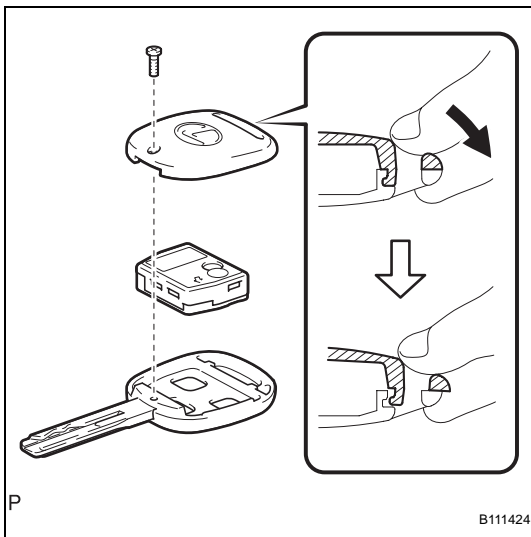


TRANSMITTER BATTERY REPLACEMENT

1. REMOVE TRANSMITTER BATTERY

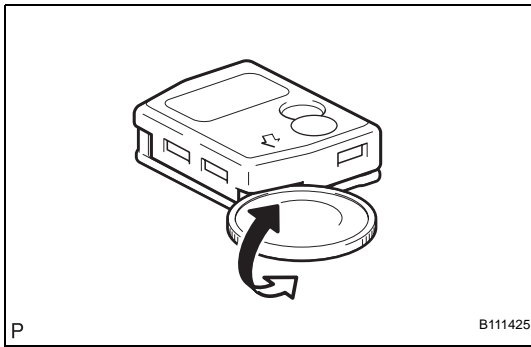
- (a) Remove the cover.



- (b) Using a coin, or other flat object, pry open the transmitter cover.
 (c) Remove the transmitter battery (lithium battery).

NOTICE:

- Do not push the terminals with your finger.
- Forcibly prying up the battery (lithium battery) to remove it will deform the terminals.
- Do not touch the battery with wet hands. Water may cause rust.
- Do not touch or move any components inside the transmitter because handling the components may interfere with proper operation of the transmitter.

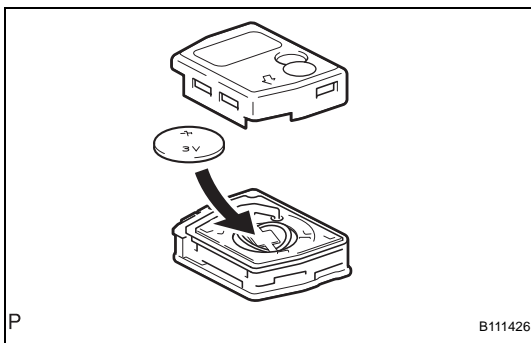


2. INSTALL TRANSMITTER BATTERY

- (a) Install a new battery (lithium battery) with the positive (+) side up as shown in the illustration.

NOTICE:

- Be sure that the positive side and the negative side of the transmitter battery are matched correctly.
- Be careful not to bend the terminals of the transmitter battery during installation.
- Be careful that dust and oil do not come into contact with the transmitter case.



- (b) Install the cover.

NOTICE:

If the screws are loose, it may cause faulty contact between the battery (lithium battery) and the terminals.