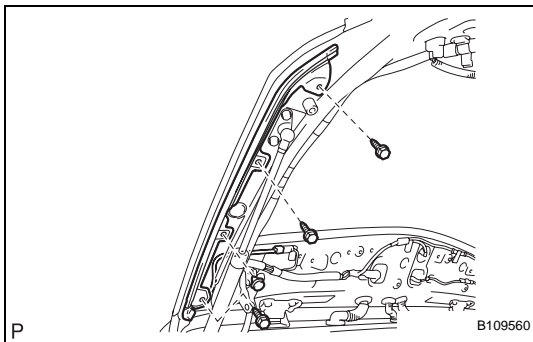
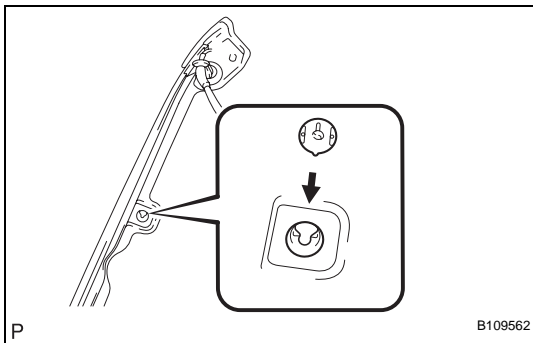


## REASSEMBLY

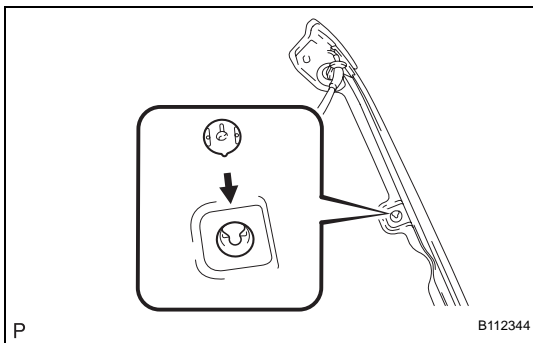
1. INSTALL DOOR PULL HANDLE
2. INSTALL POWER BACK DOOR CONTROL SWITCH ASSEMBLY (w/ Power Back Door)
3. INSTALL POWER BACK DOOR WARNING BUZZER (w/ Power Back Door)
4. INSTALL LICENSE PLATE LIGHT ASSEMBLY (See page [LI-212](#))
5. INSTALL TELEVISION CAMERA (w/ Rear View Monitor) (See page [PM-30](#))
6. INSTALL BACK DOOR OPENER SWITCH ASSEMBLY
7. INSTALL BACK DOOR GARNISH (See page [ET-35](#))
8. INSTALL POWER BACK DOOR SENSOR ASSEMBLY LH (w/ Power Back Door)
  - (a) Install a new clip to the power back door sensor assembly LH.



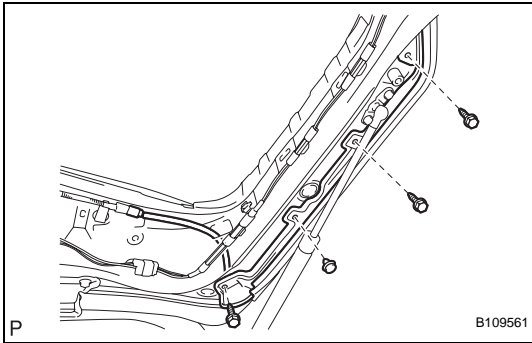
- (b) Using a "torx" socket wrench (T30), install the power back door sensor assembly LH with the 3 bolts and the clip.

**Torque: 3.5 N\*m (36 kgf\*cm, 31 in.\*lbf)**

- (c) Connect the connector.



9. INSTALL POWER BACK DOOR SENSOR ASSEMBLY RH (w/ Power Back Door)
  - (a) Install a new clip to the power back door sensor assembly RH.



- (b) Using a "torx" socket wrench (T30), install the power back door sensor assembly RH with the 3 bolts and the clip.

**Torque: 3.5 N\*m (36 kgf\*cm, 31 in.\*lbf)**

- (c) Connect the connector.

**10. INSTALL BACK DOOR LOCK ASSEMBLY (w/ Power Back Door)**

- (a) Apply body grease to the sliding parts on the back door lock assembly.

- (b) Install the back door lock assembly with the 4 bolts.

**Torque: 13 N\*m (133 kgf\*cm, 10 ft.\*lbf)**

- (c) Install the clamp.

- (d) Connect each connector and the link rod.

**11. INSTALL BACK DOOR LOCK ASSEMBLY (w/o Power Back Door)**

- (a) Apply body grease to the sliding parts on the back door lock assembly.

- (b) Install the back door lock assembly with the 3 bolts.

**Torque: 13 N\*m (133 kgf\*cm, 10 ft.\*lbf)**

- (c) Install the clamp.

- (d) Connect the connector and the link rod.

**12. INSTALL BACK DOOR LOCK COVER**

**13. INSTALL BACK DOOR TRIM SPACER (LH Side)**

**14. INSTALL BACK DOOR TRIM SPACER (RH Side)**

**15. INSTALL REAR SPOILER SUB-ASSEMBLY (See page [ET-12](#))**

**16. INSTALL BACK DOOR TRIM COVER LH**

**17. INSTALL BACK DOOR TRIM COVER RH**

**18. INSTALL BACK-UP LIGHT ASSEMBLY LH (See page [LI-210](#))**

**19. INSTALL BACK-UP LIGHT ASSEMBLY RH (See page [LI-210](#))**

**20. INSTALL REAR WIPER MOTOR ASSEMBLY (See page [WW-45](#))**

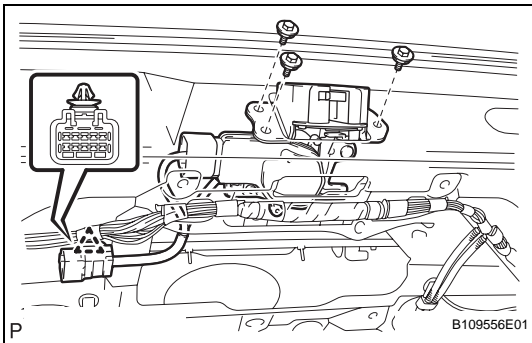
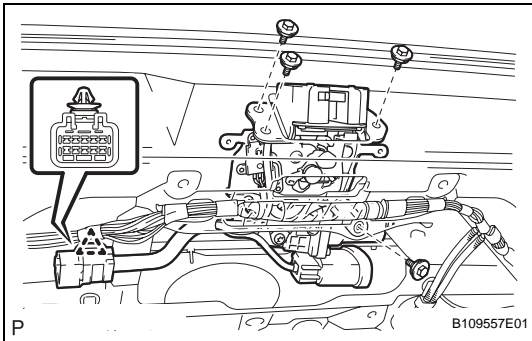
**21. INSTALL BACK DOOR TRIM PANEL ASSEMBLY**

**22. INSTALL BACK DOOR TRIM PANEL ASSEMBLY UPPER**

**23. INSTALL BACK WINDOW PANEL TRIM UPPER (w/ Power Back Door)**

**24. INSTALL BACK DOOR TRIM BOARD (w/ Power Back Door)**

**25. INSTALL BACK WINDOW PANEL TRIM UPPER (w/o Power Back Door)**



26. **INSTALL REAR NO.1 WIPER LINK PIVOT WASHER**  
(See page [WW-45](#))
27. **INSTALL REAR NO.1 WIPER LINK PIVOT NUT** (See  
page [WW-45](#))
28. **INSTALL REAR WIPER SHAFT COVER** (See page  
[WW-46](#))
29. **INSTALL REAR WIPER ARM AND BLADE  
ASSEMBLY** (See page [WW-46](#))
30. **INSTALL REAR WIPER ARM COVER** (See page [WW-  
46](#))
31. **BACK DOOR CLOSER SYSTEM INITIALIZATION**  
(See page [ED-6](#))
32. **POWER BACK DOOR SYSTEM INITIALIZATION**  
(See page [ED-33](#))
33. **ELECTRICAL BACK DOOR OUTSIDE HANDLE  
SYSTEM INITIALIZATION**  
(See page [ED-69](#))