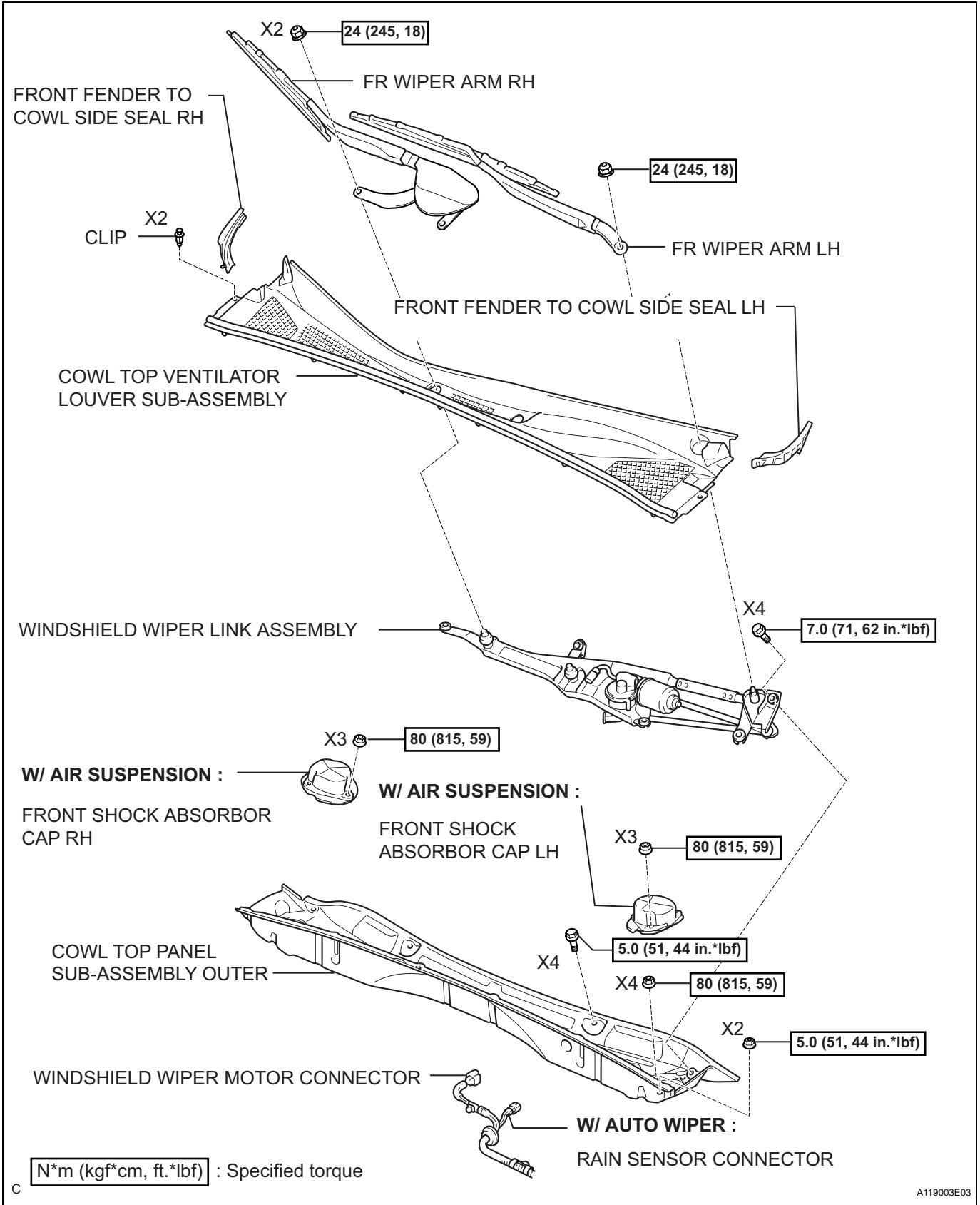


CAMSHAFT

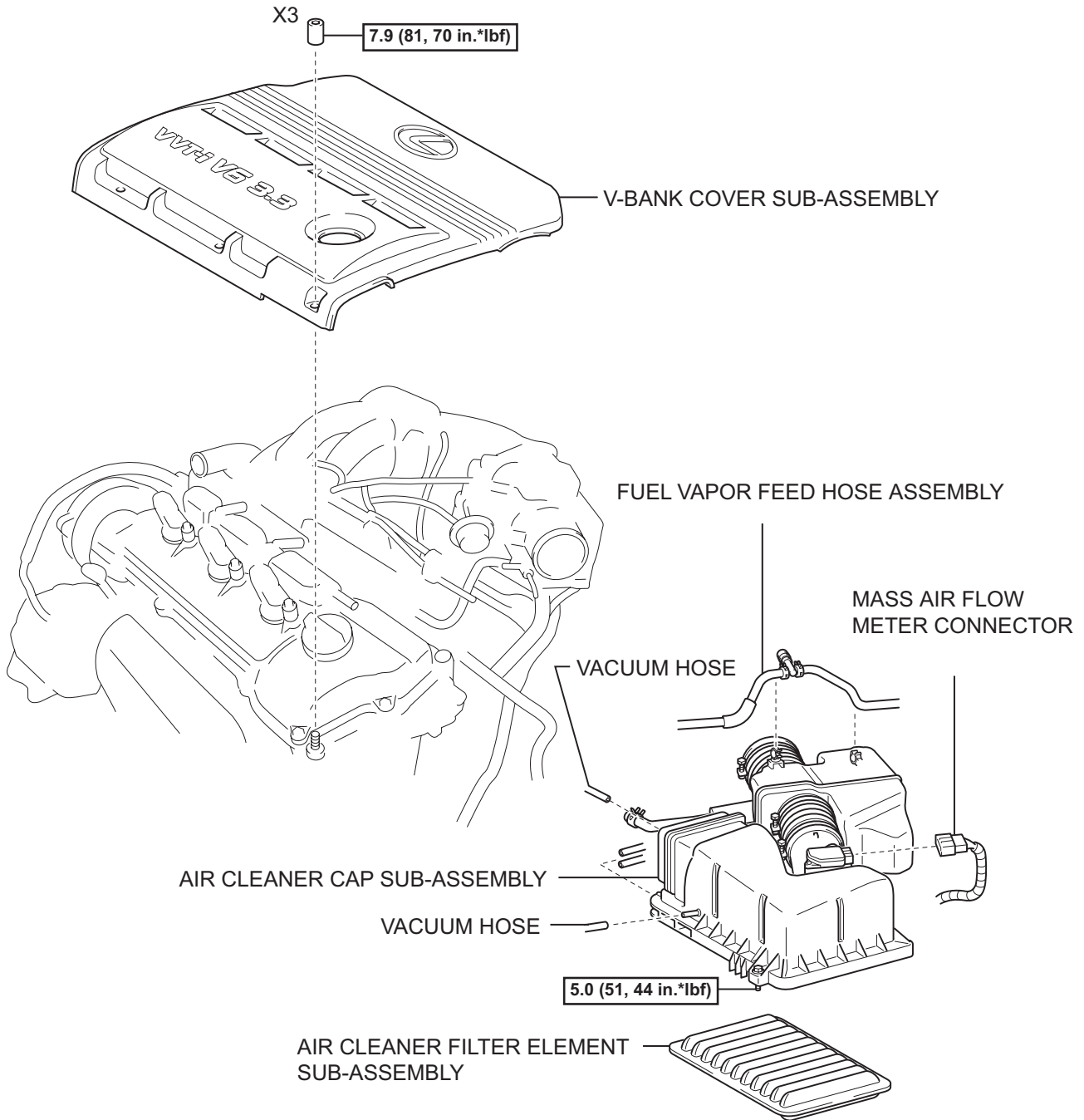
COMPONENTS

EM



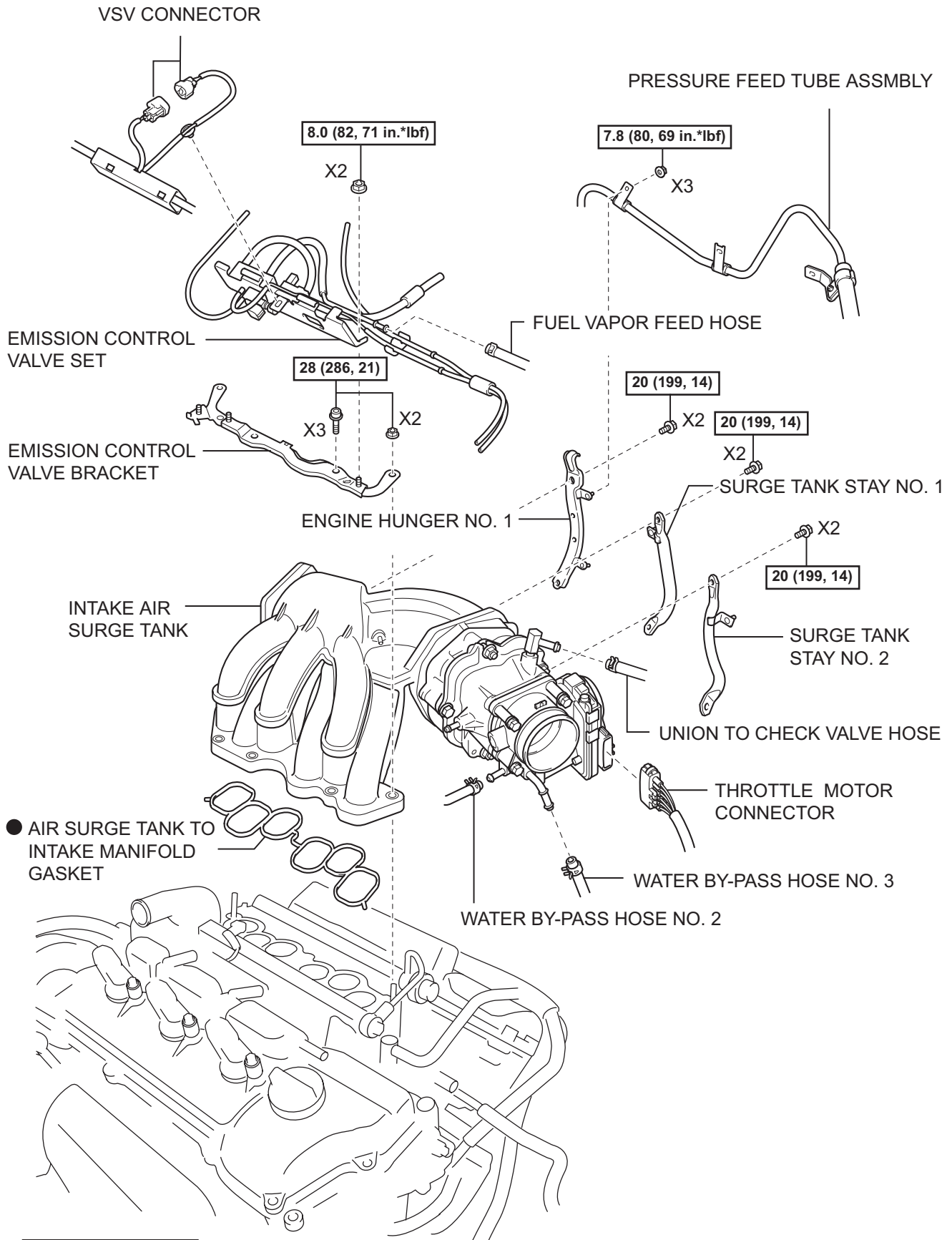
C

EM



N*m (kgf*cm, ft.*lbf) : Specified torque

Y

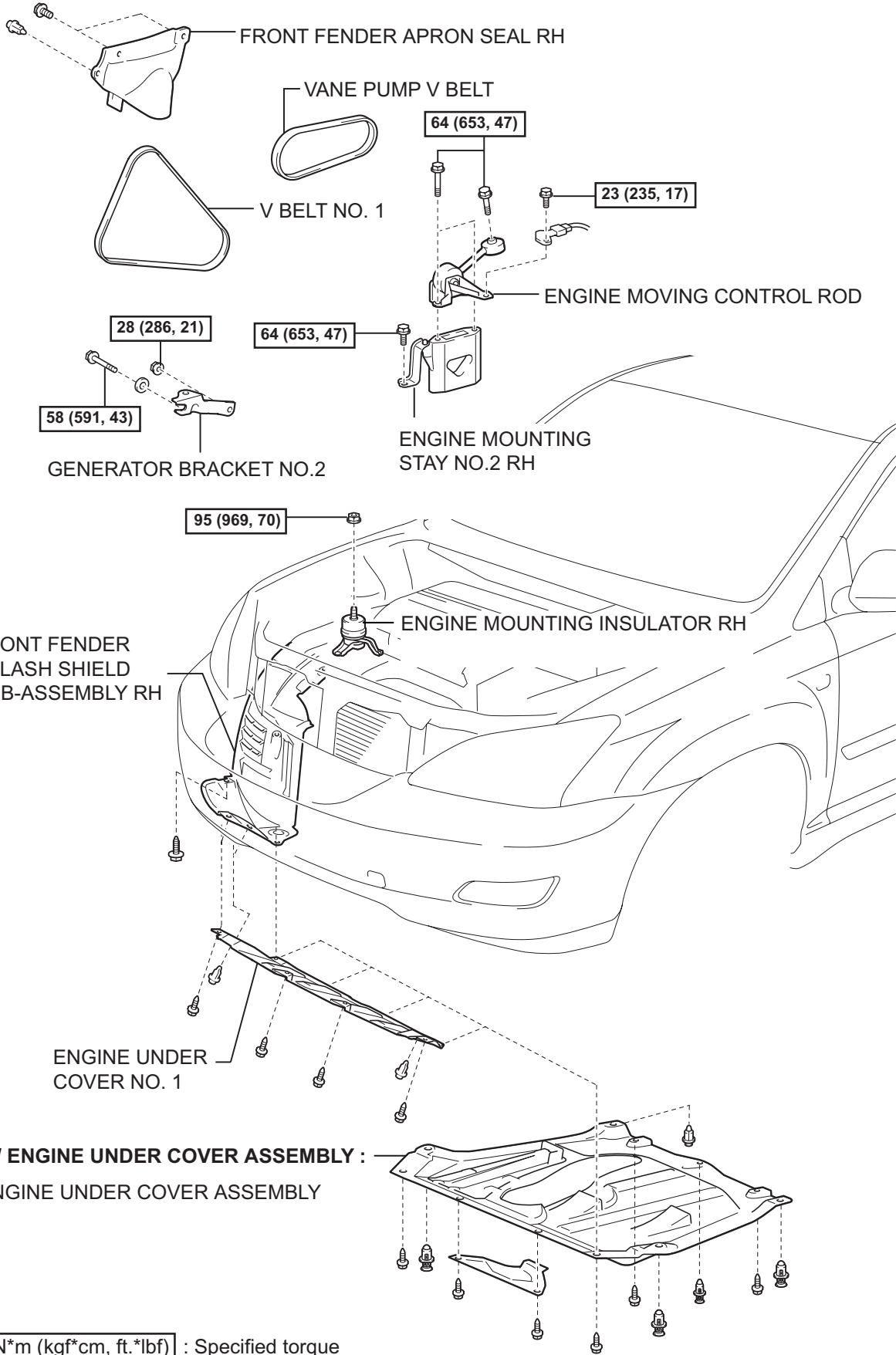


N*m (kgf*cm, ft.*lbf) : Specified torque

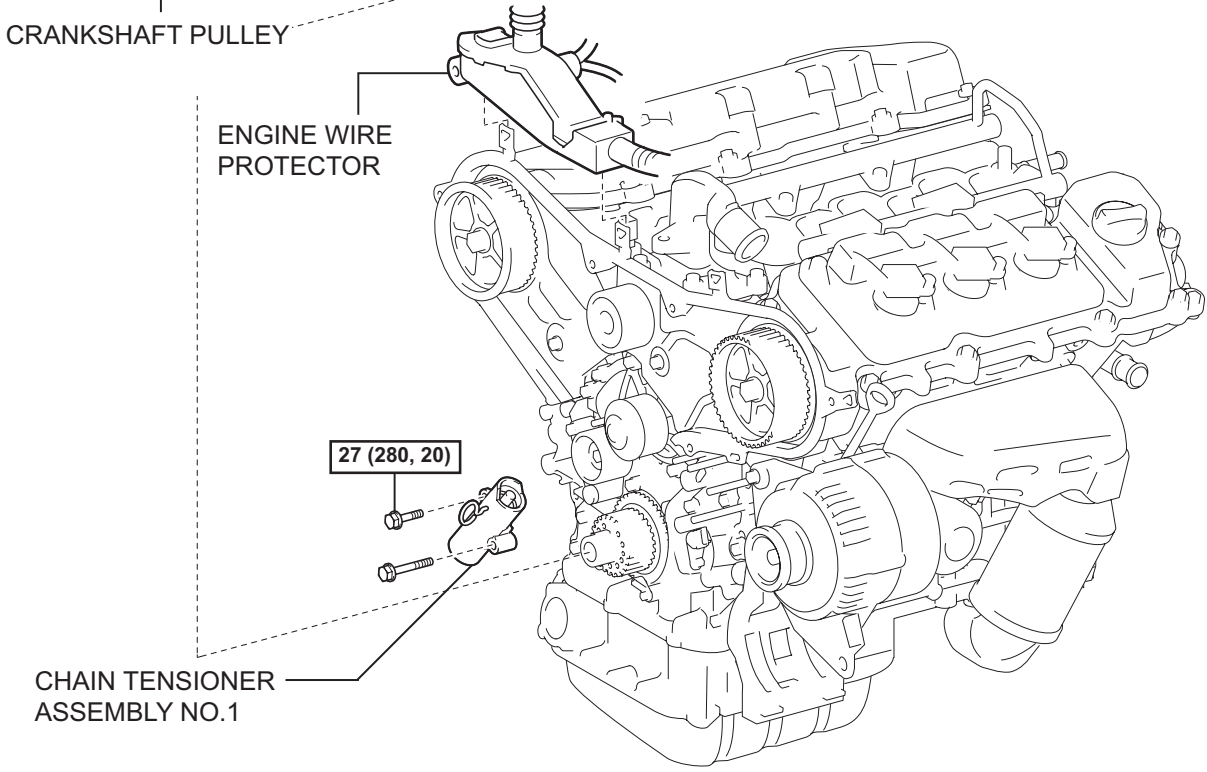
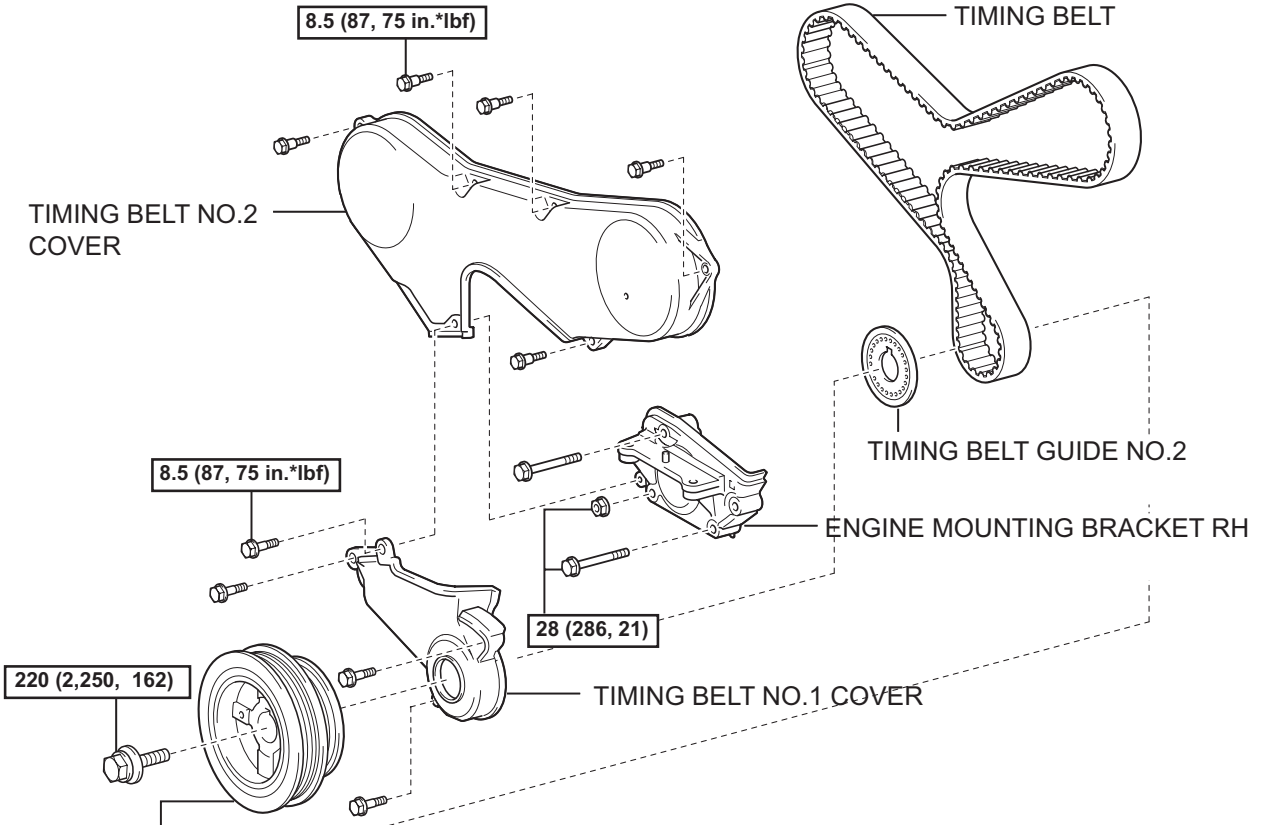
● Non-reusable part

γ

EM



N*m (kgf*cm, ft.*lbf) : Specified torque

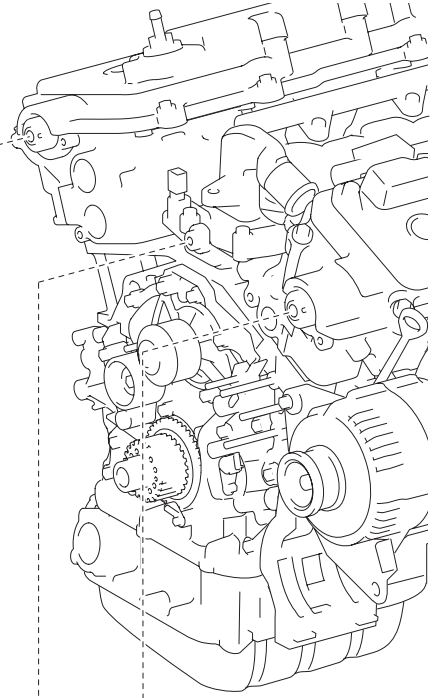


N*m (kgf*cm, ft.*lbf) : Specified torque

P

A119014E01

EM



TIMING BELT NO.3 COVER

CAMSHAFT TIMING PULLEY

GASKET

COLLAR

BUSHING

8.5 (87, 76 in.*lbf)

X6

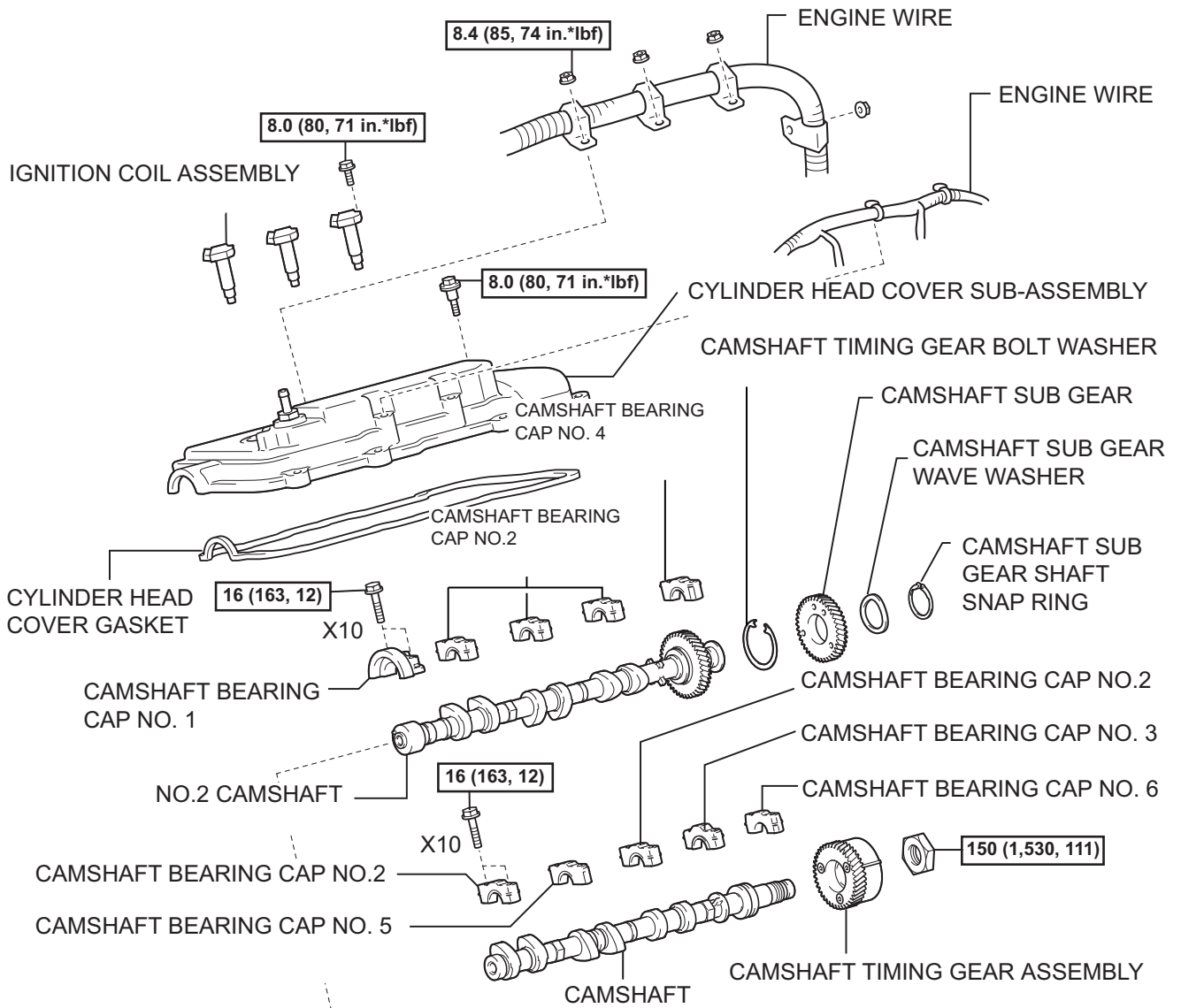
125 (1,275, 92)

43 (438, 32)

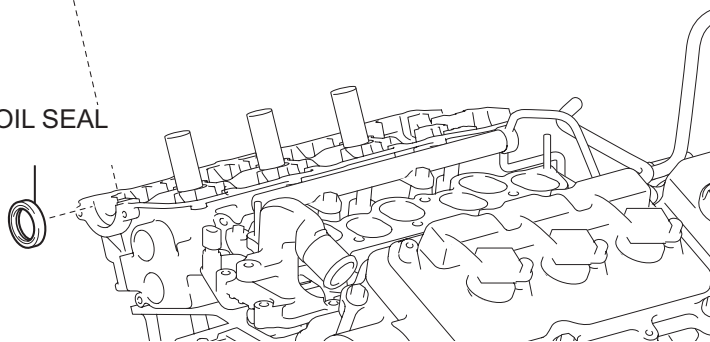
TIMING BELT IDLER
SUB-ASSEMBLY NO.2

ENGINE WIRE

N*m (kgf*cm, ft.*lbf) : Specified torque



● CAMSHAFT SETTING OIL SEAL



N*m (kgf*cm, ft.*lbf) : Specified torque

● Non-reusable part

EM

