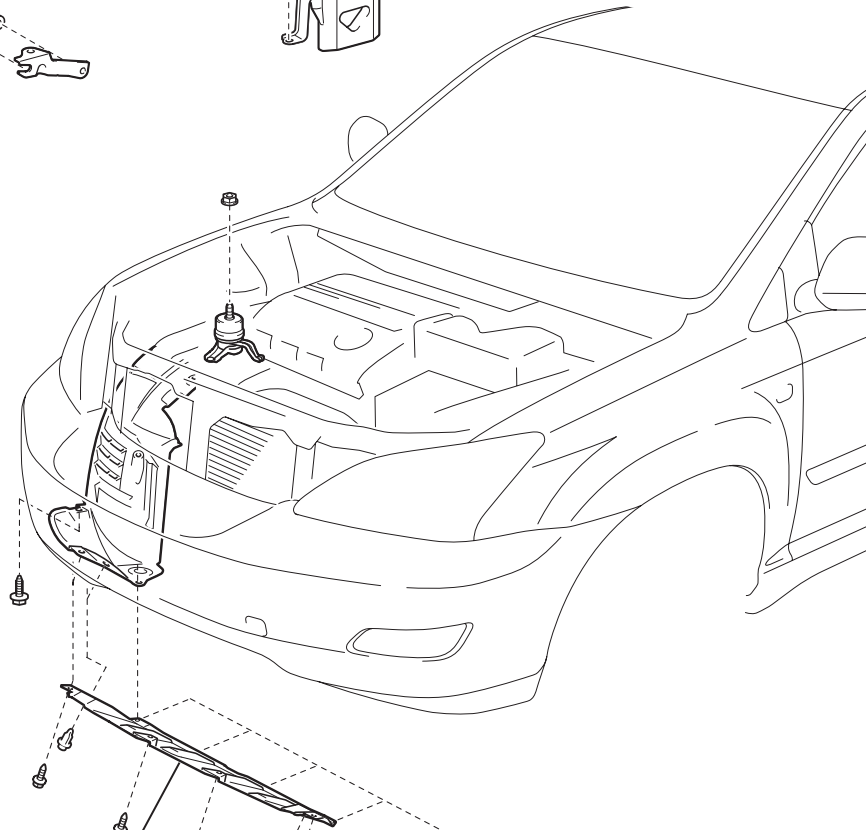
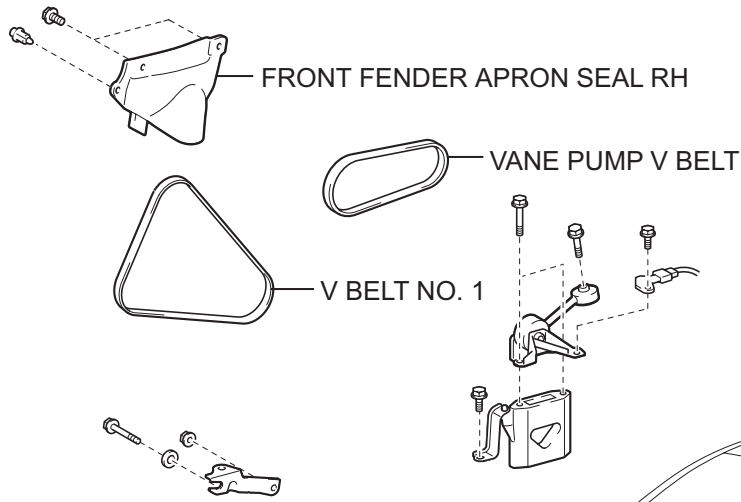


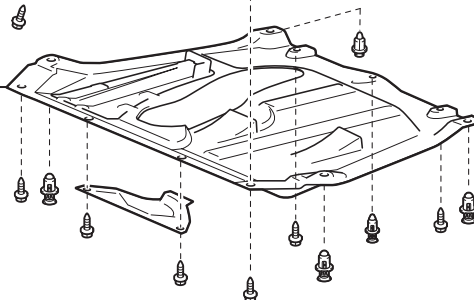
# DRIVE BELT COMPONENTS

EM



ENGINE UNDER COVER NO.1

W/ ENGINE UNDER COVER ASSEMBLY :  
ENGINE UNDER COVER ASSEMBLY

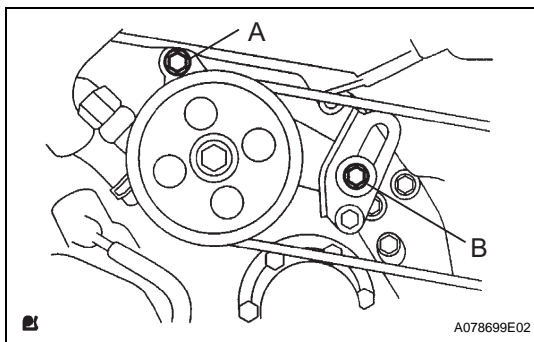
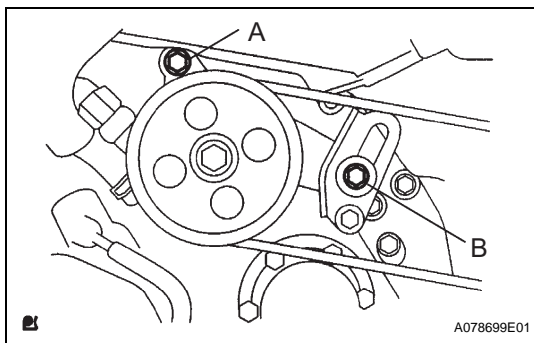
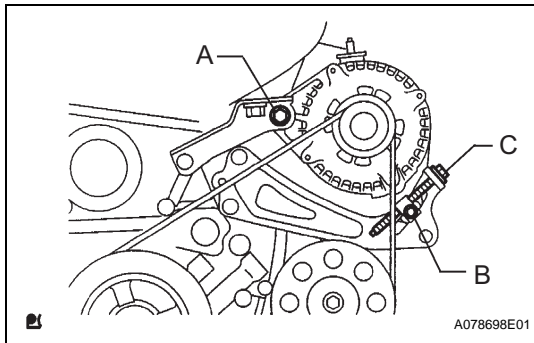


**N\*m (kgf\*cm, ft.\*lbf)** : Specified torque

P

## REMOVAL

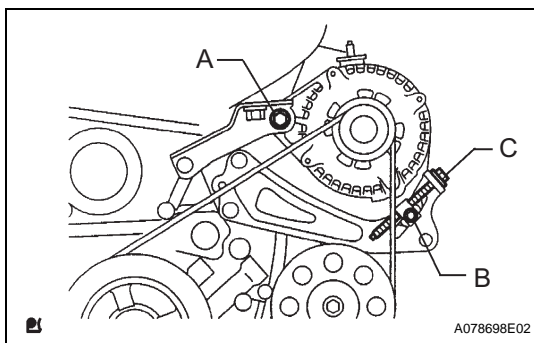
1. REMOVE FRONT WHEEL RH
2. REMOVE ENGINE UNDER COVER ASSEMBLY
  - (a) w/ engine under cover assembly
3. REMOVE ENGINE UNDER COVER NO.1
4. REMOVE FRONT FENDER APRON SEAL RH
  - (a) Remove the front fender apron seal RH (See page [ES-367](#)).
5. REMOVE V (COOLER COMPRESSOR TO CRANKSHAFT PULLEY) BELT NO.1
  - (a) Loosen bolts A and B.
  - (b) Loosen the adjusting bolt C, and remove the V-ribbed belt.



6. REMOVE VANE PUMP V BELT
  - (a) Loosen bolts A and B, and remove the V-ribbed belt.

## INSTALLATION

1. INSTALL VANE PUMP V BELT
  - (a) Install the V-ribbed on each pulley.
  - (b) Using a bar, adjust the V-ribbed belt tension and tighten bolt B.  
**Torque: 43 N\*m (439 kgf\*cm, 32 ft.\*lbf)**
  - (c) Tighten bolt A.  
**Torque: 43 N\*m (439 kgf\*cm, 32 ft.\*lbf)**
2. INSTALL V (COOLER COMPRESSOR TO CRANKSHAFT PULLEY) BELT NO.1
  - (a) Install the V-ribbed belt on each pulley.
  - (b) Tighten the adjusting bolt C, and adjust the V-ribbed belt tension.
  - (c) First tighten bolt A, then tighten bolt B.  
**Torque: Bolt A**  
**58 N\*m (591 kgf\*cm, 43 ft.\*lbf)**  
**Bolt B**  
**18 N\*m (184 kgf\*cm, 13 ft.\*lbf)**



3. **INSPECT DRIVE BELT DEFLECTION AND TENSION**
  - (a) Inspect the drive belt deflection and tension (reference) (See page [EM-1](#)).
4. **INSTALL ENGINE UNDER COVER NO.1**
5. **INSTALL ENGINE UNDER COVER ASSEMBLY**
  - (a) w/ engine under cover assembly
6. **INSTALL FRONT WHEEL RH**  
**Torque: 103 N\*m (1,050 kgf\*cm, 76 ft.\*lbf)**