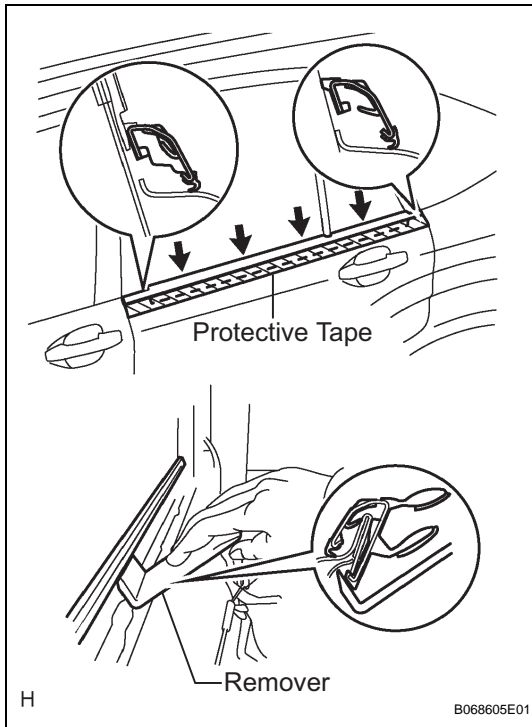


## REMOVAL

1. REMOVE POWER WINDOW REGULATOR SWITCH ASSEMBLY (See page [ED-111](#))
2. REMOVE REAR DOOR INSIDE HANDLE BEZEL PLUG (See page [ED-111](#))
3. REMOVE REAR DOOR TRIM BOARD SUB-ASSEMBLY (See page [ED-111](#))
4. REMOVE REAR DOOR BELT MOULDING ASSEMBLY
  - (a) Put protective tape under the moulding.
  - (b) Using a moulding remover, disengage the claws and remove the rear door belt moulding assembly LH.

HINT:

Tape the remover tip before use.



## **INSTALLATION**

- 1. INSTALL REAR DOOR BELT MOULDING ASSEMBLY**
- 2. INSTALL REAR DOOR TRIM BOARD SUB-ASSEMBLY**
- 3. INSTALL POWER WINDOW REGULATOR SWITCH ASSEMBLY**
- 4. INSTALL REAR DOOR INSIDE HANDLE BEZEL PLUG**