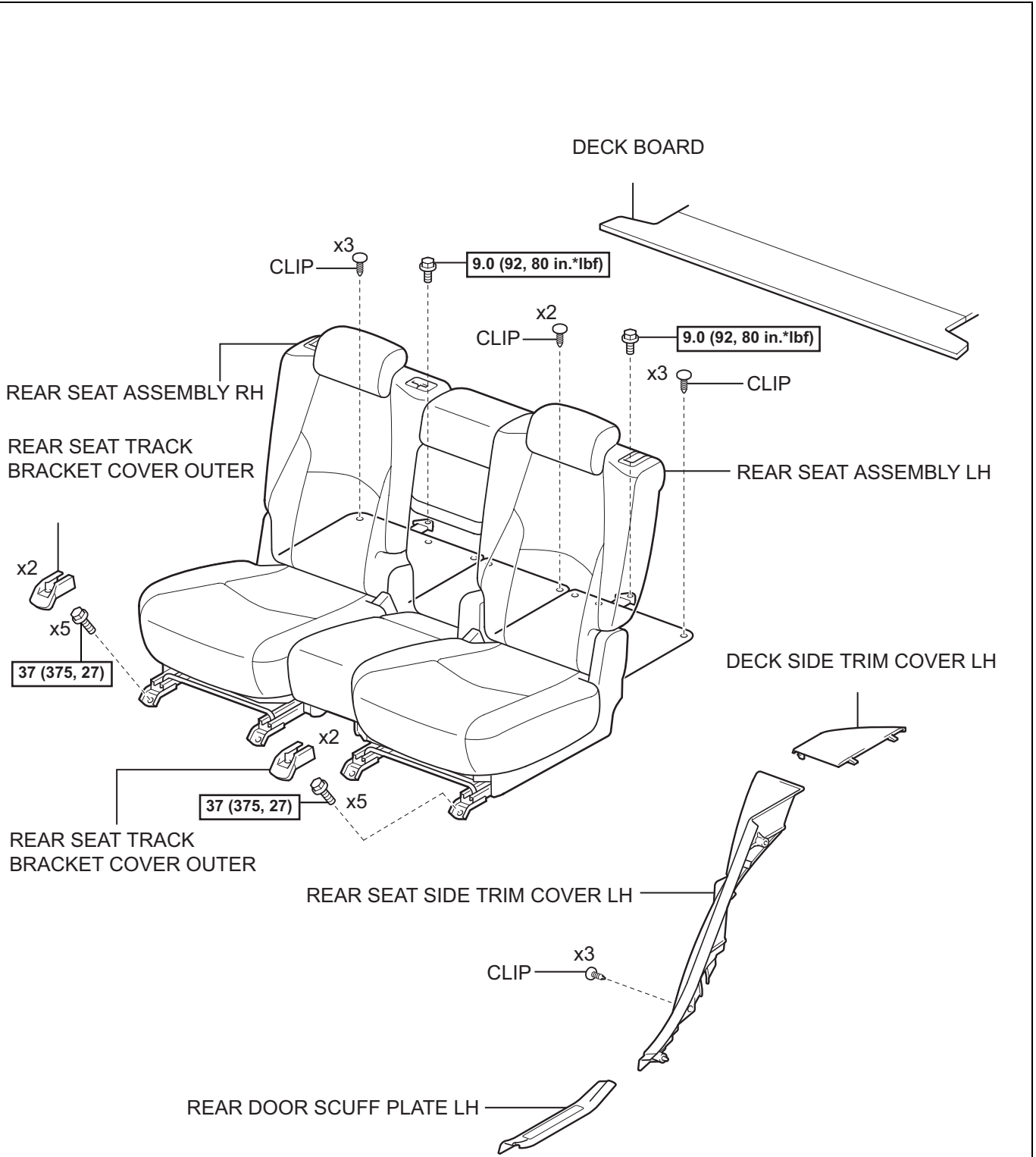


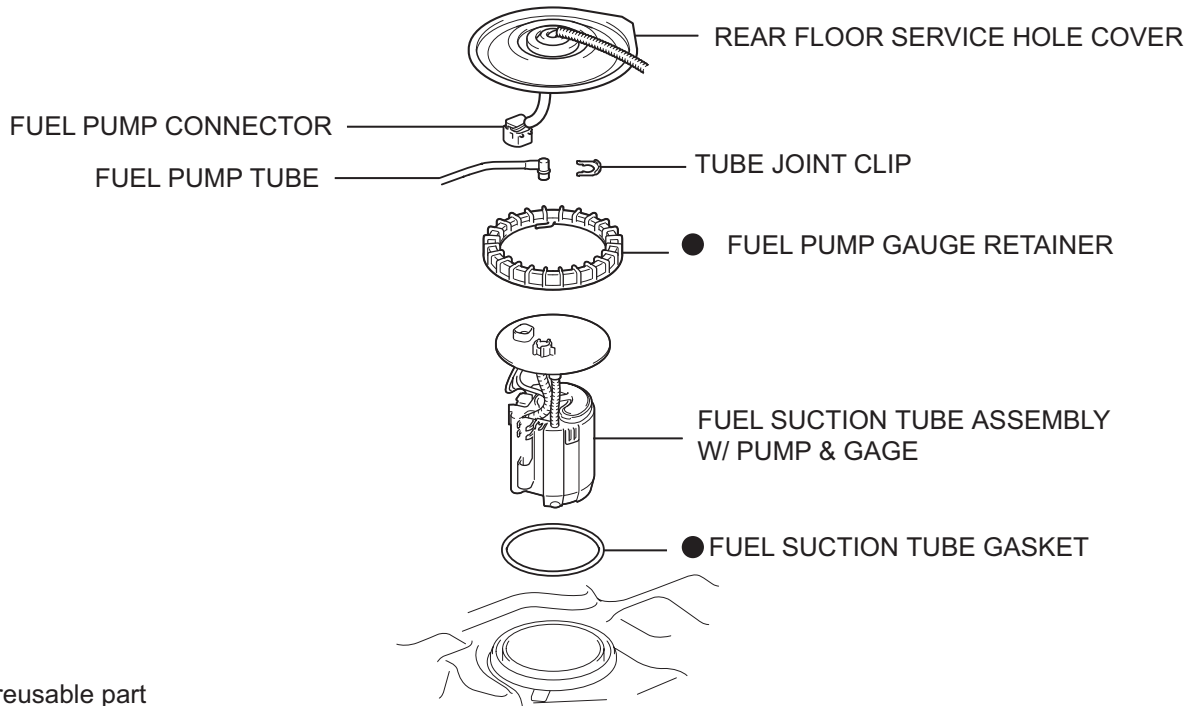
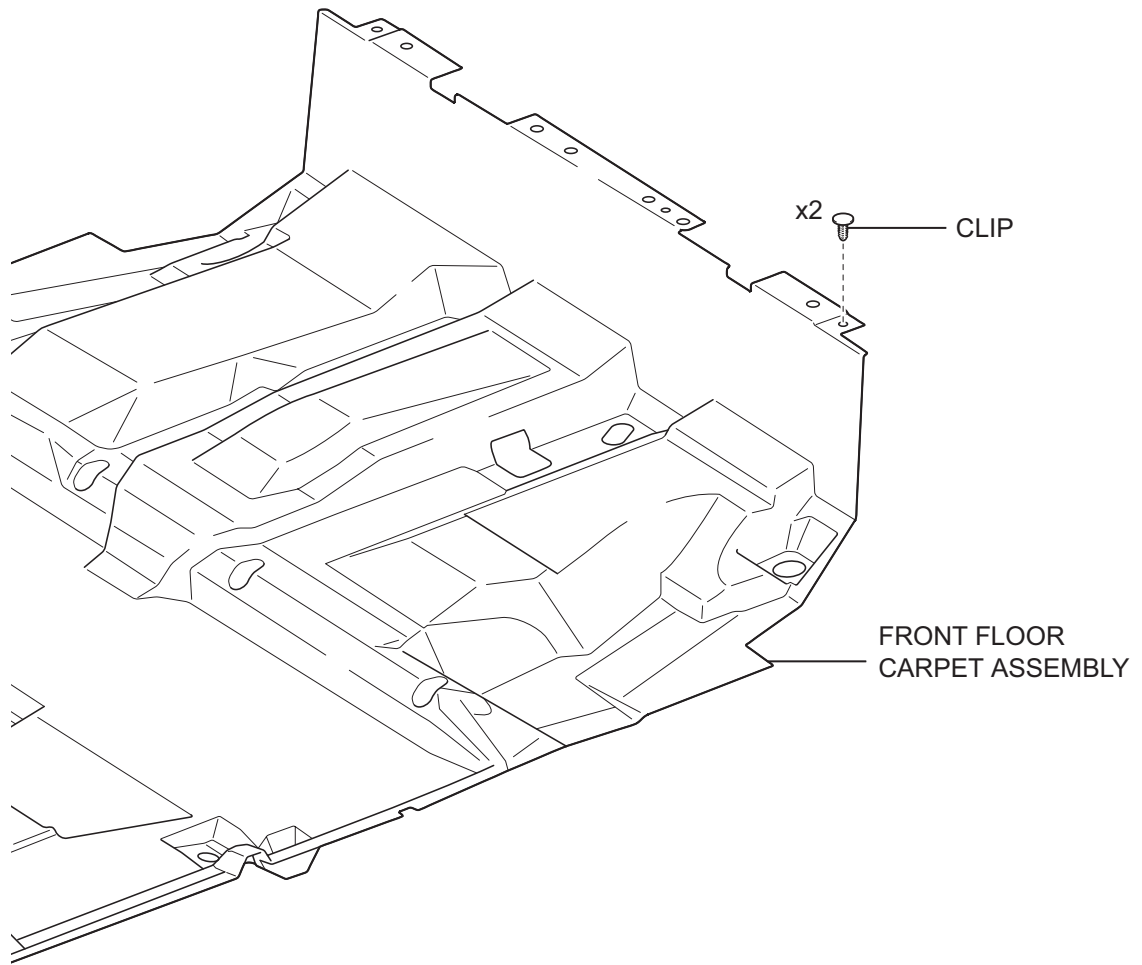
# FUEL TANK COMPONENTS

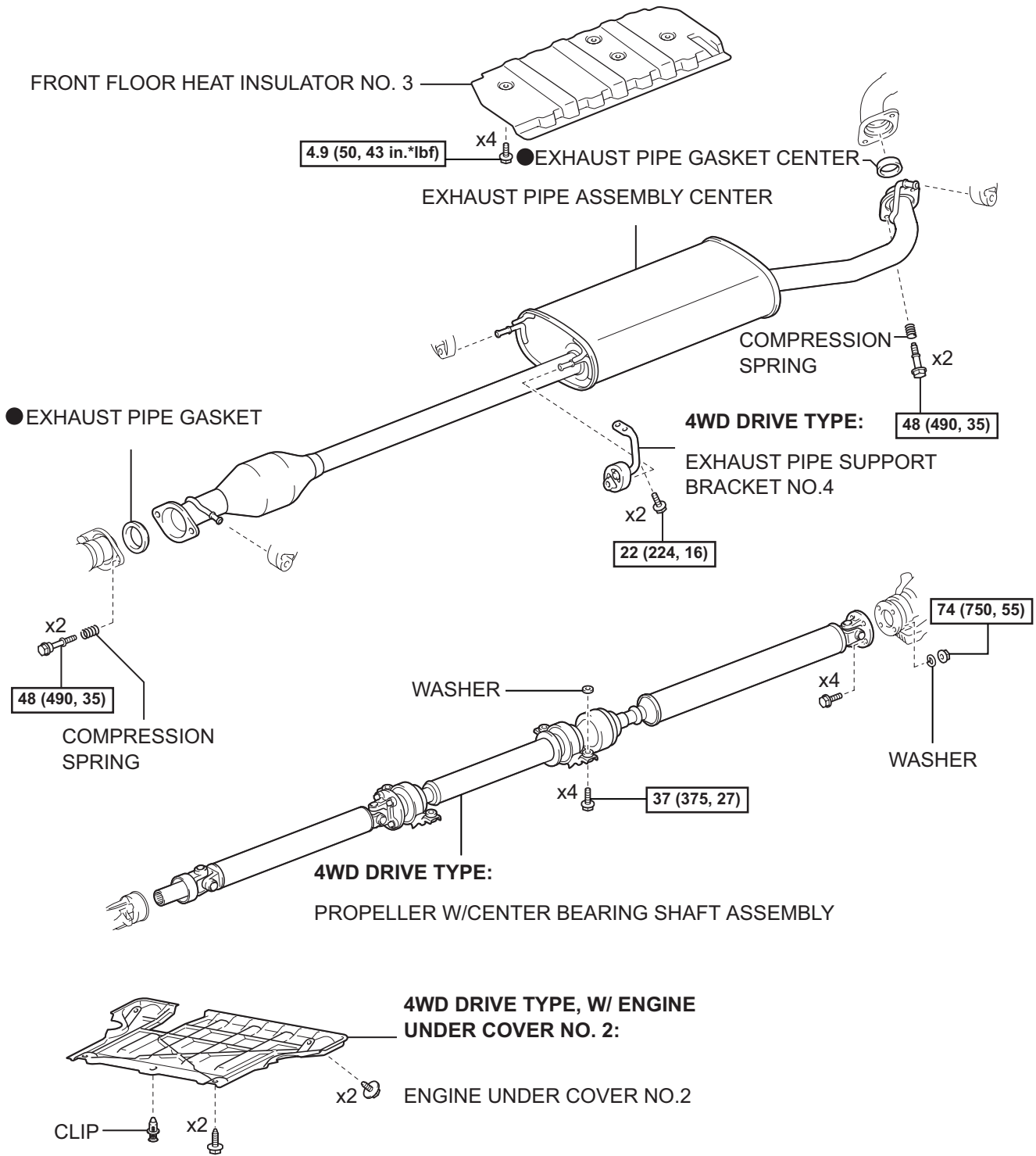


FU

**N\*m (kgf\*cm, ft.\*lbf)** : Specified torque

FU

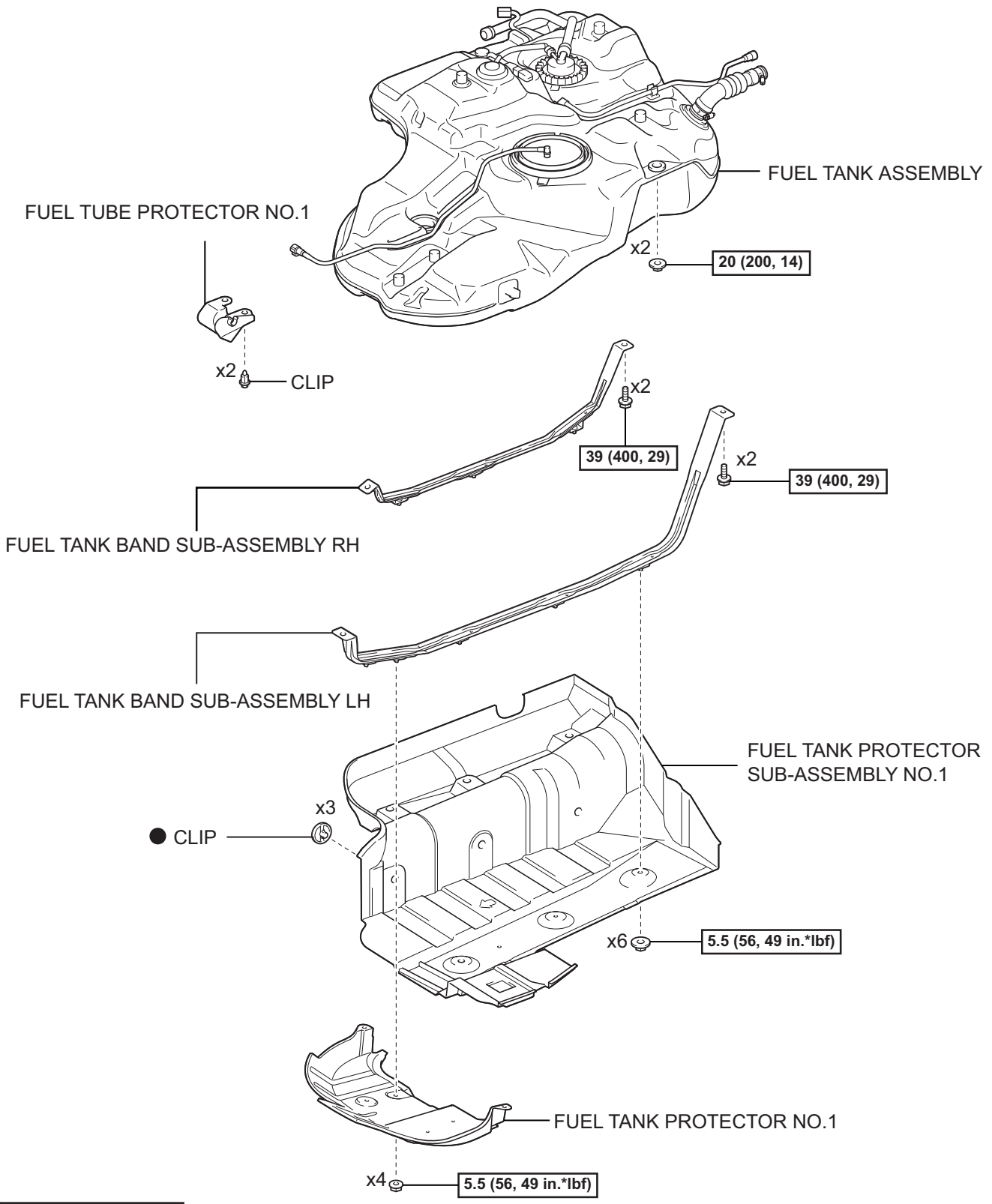




**N\*m (kgf\*cm, ft.\*lbf)** : Specified torque

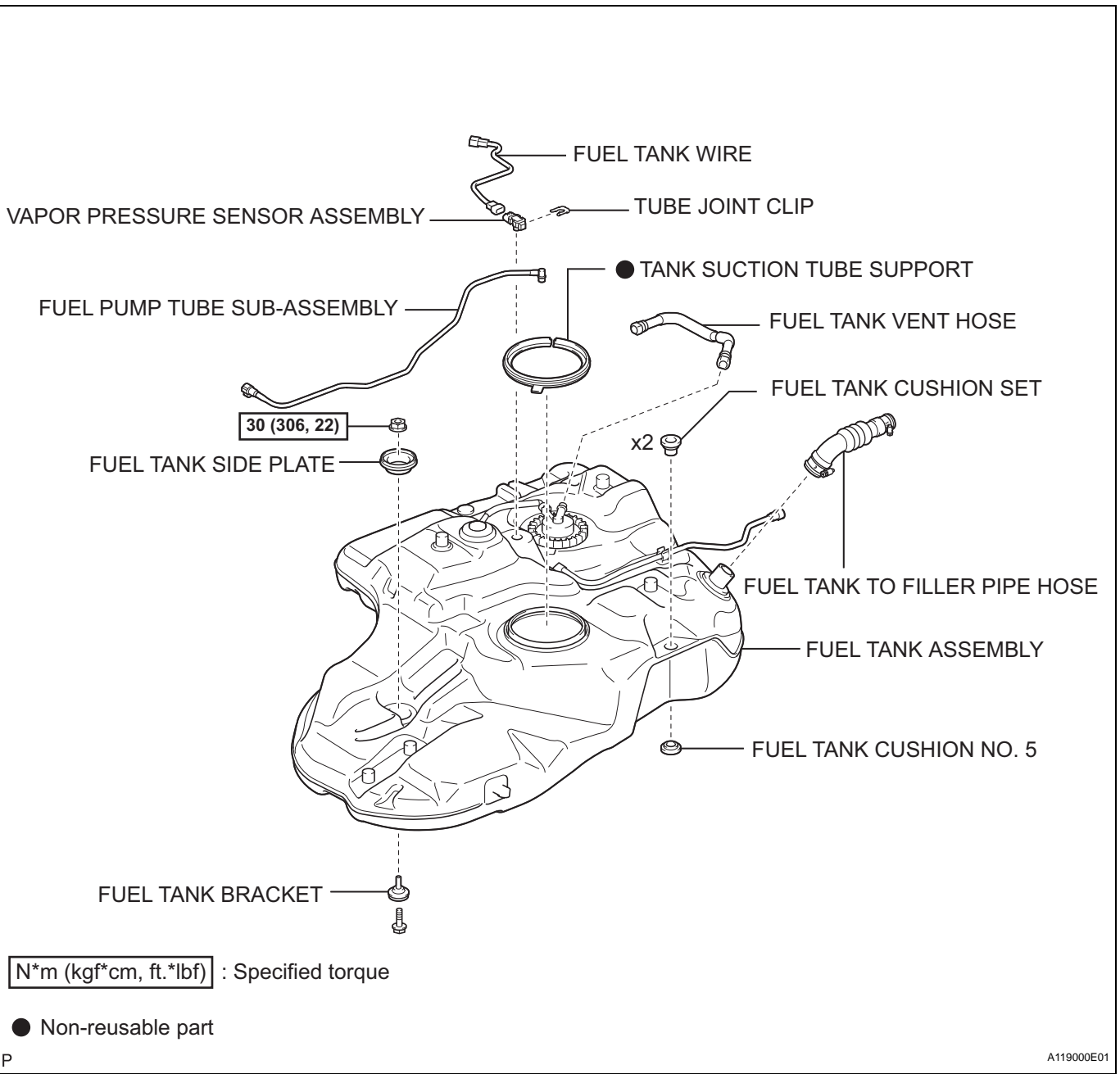
● Non-reusable part

FU



**N\*m (kgf\*cm, ft.\*lbf)** : Specified torque

● Non-reusable part



FU

P

A119000E01