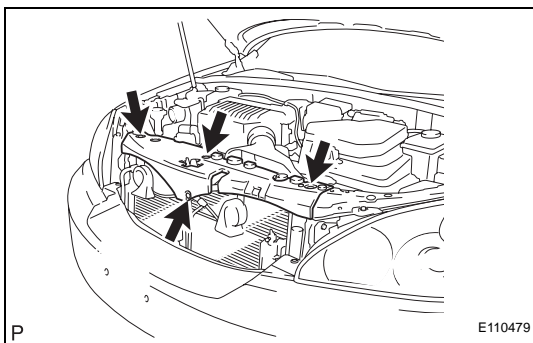
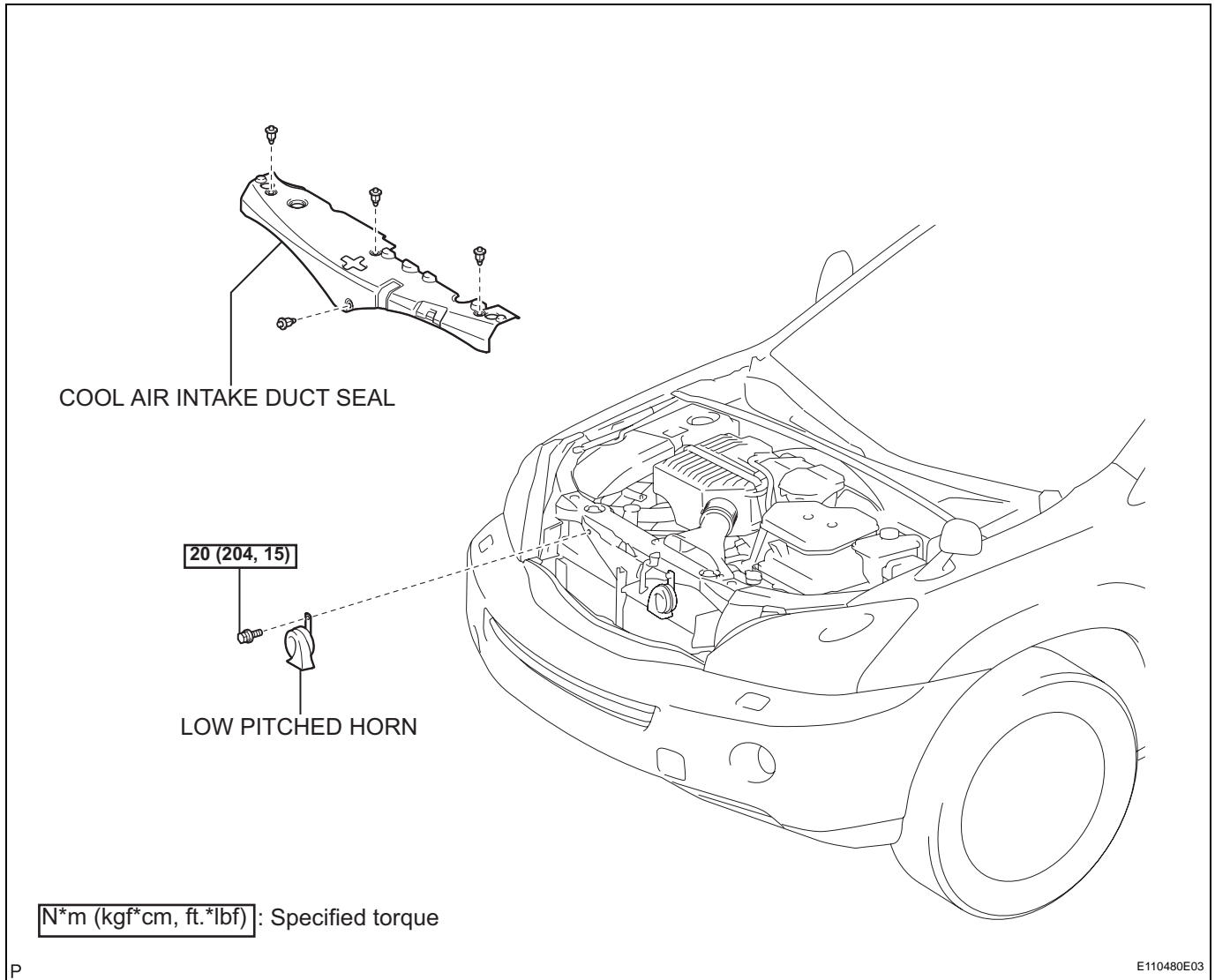


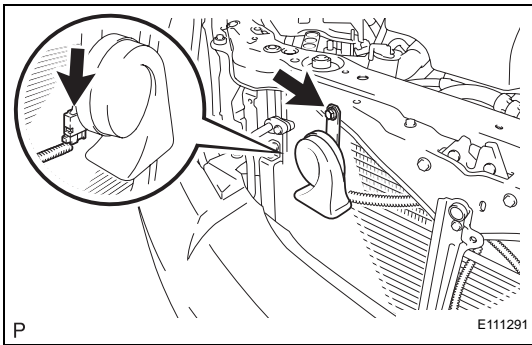
# LOW PITCHED HORN

## COMPONENTS

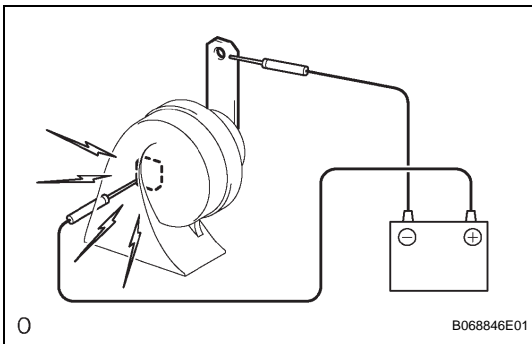


## REMOVAL

1. REMOVE COOL AIR INTAKE DUCT SEAL
  - (a) Remove the 4 clips and cool air intake duct seal.



2. REMOVE LOW PITCHED HORN
  - (a) Disconnect the connector.
  - (b) Remove the bolt and the low pitched horn.

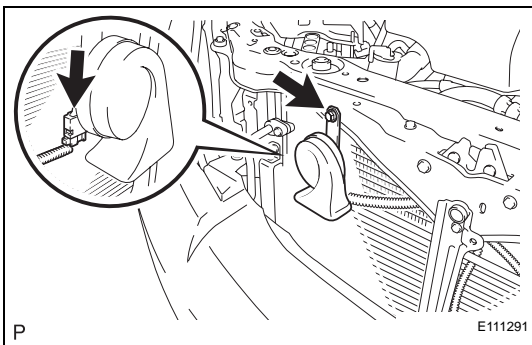


### INSPECTION

1. INSPECT LOW PITCHED HORN
  - (a) Apply battery voltage and check operation of the horn, as shown in the table.

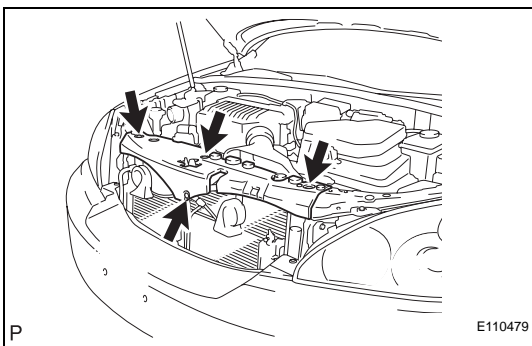
**Standard**

| Measurement Condition   | Specified Condition |
|---|---------------------|
| Battery positive (+) → Terminal 1<br>Battery negative (-) → Body ground | Horn sounds         |



### INSTALLATION

1. INSTALL LOW PITCHED HORN
  - (a) Install the low pitched horn with the bolt.  
**Torque: 20 N\*m (204 kgf\*cm, 15 ft.\*lbf)**
  - (b) Connect the connector.



2. INSTALL COOL AIR INTAKE DUCT SEAL
  - (a) Install the cool air intake duct seal with the 4 clips.