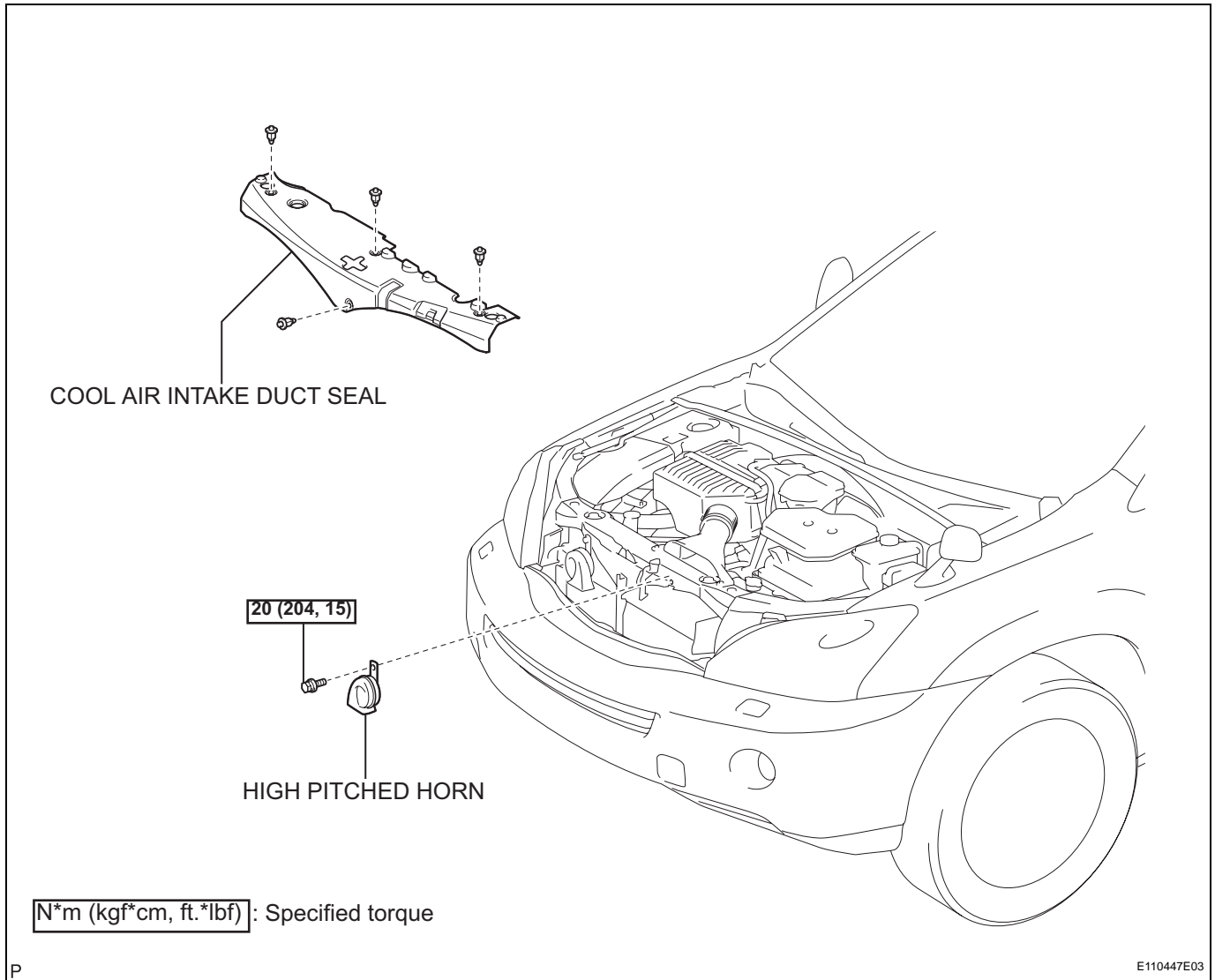


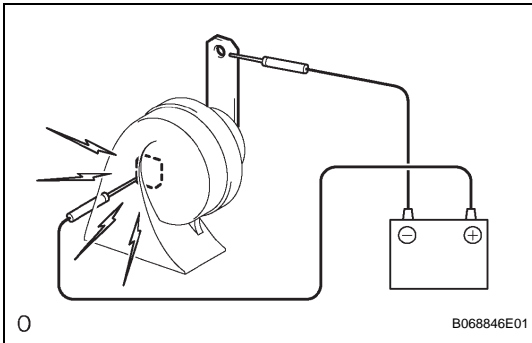
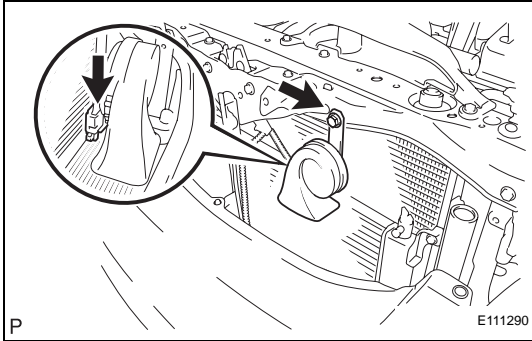
# HIGH PITCHED HORN

## COMPONENTS



## REMOVAL

1. REMOVE COOL AIR INTAKE DUCT SEAL (See page [HO-5](#))
2. REMOVE HIGH PITCHED HORN
  - (a) Disconnect the connector.
  - (b) Remove the bolt and high pitched horn.



## INSPECTION

1. INSPECT HIGH PITCHED HORN
    - (a) Apply battery voltage and check operation of the horn, as shown in the table.
- Standard**

Measurement Condition	Specified Condition
Battery positive (+) → Terminal 1	Horn sounds
Battery negative (-) → Body ground	

## INSTALLATION

1. INSTALL HIGH PITCHED HORN
  - (a) Install the high pitched horn with the bolt.  
**Torque: 20 N\*m (204 kgf\*cm, 15 ft.\*lbf)**
  - (b) Connect the connector.
2. INSTALL COOL AIR INTAKE DUCT SEAL (See page [HO-6](#))

