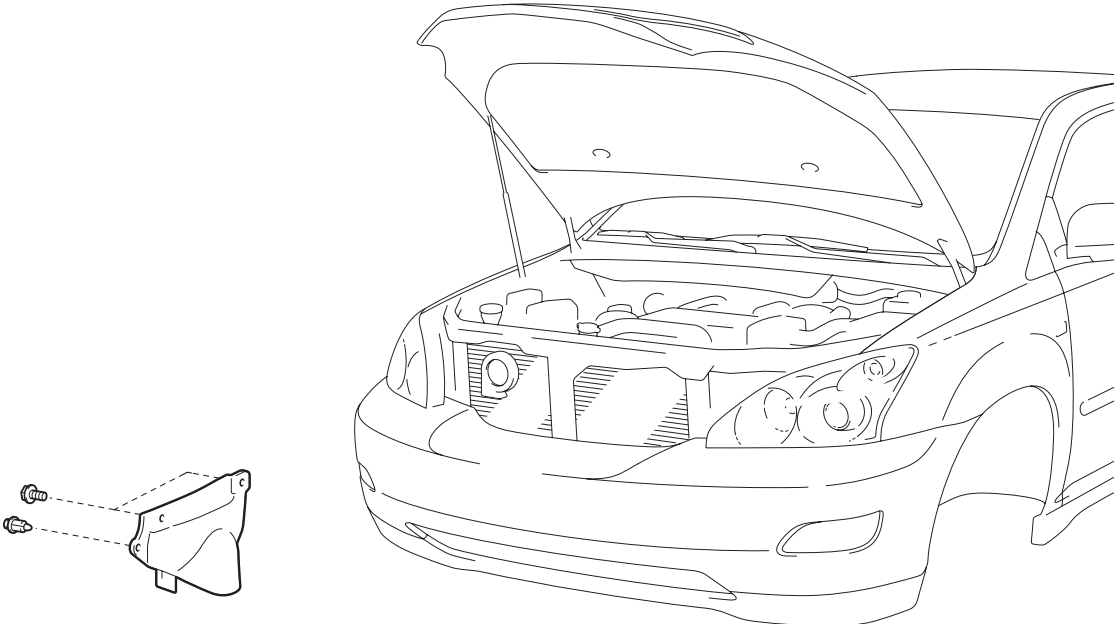
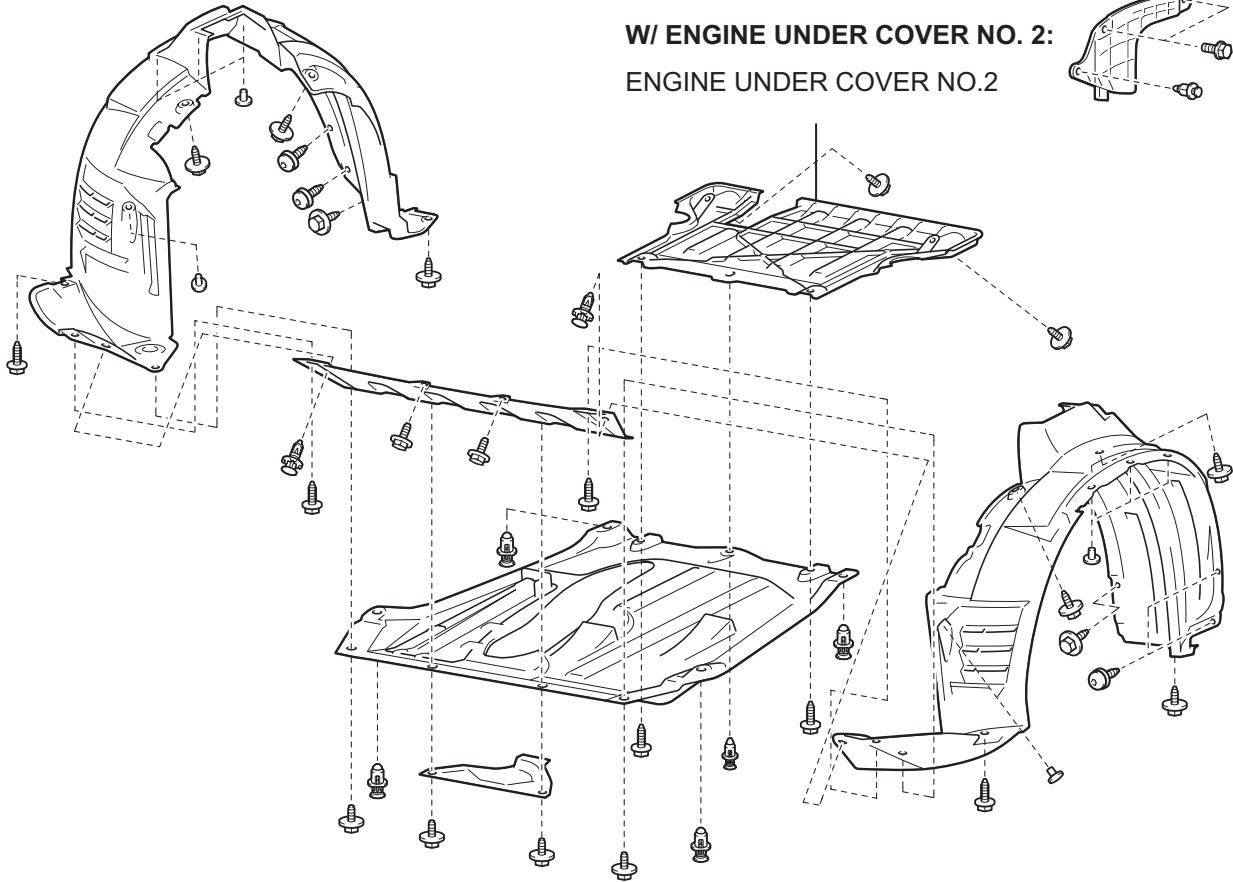
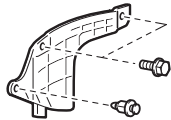


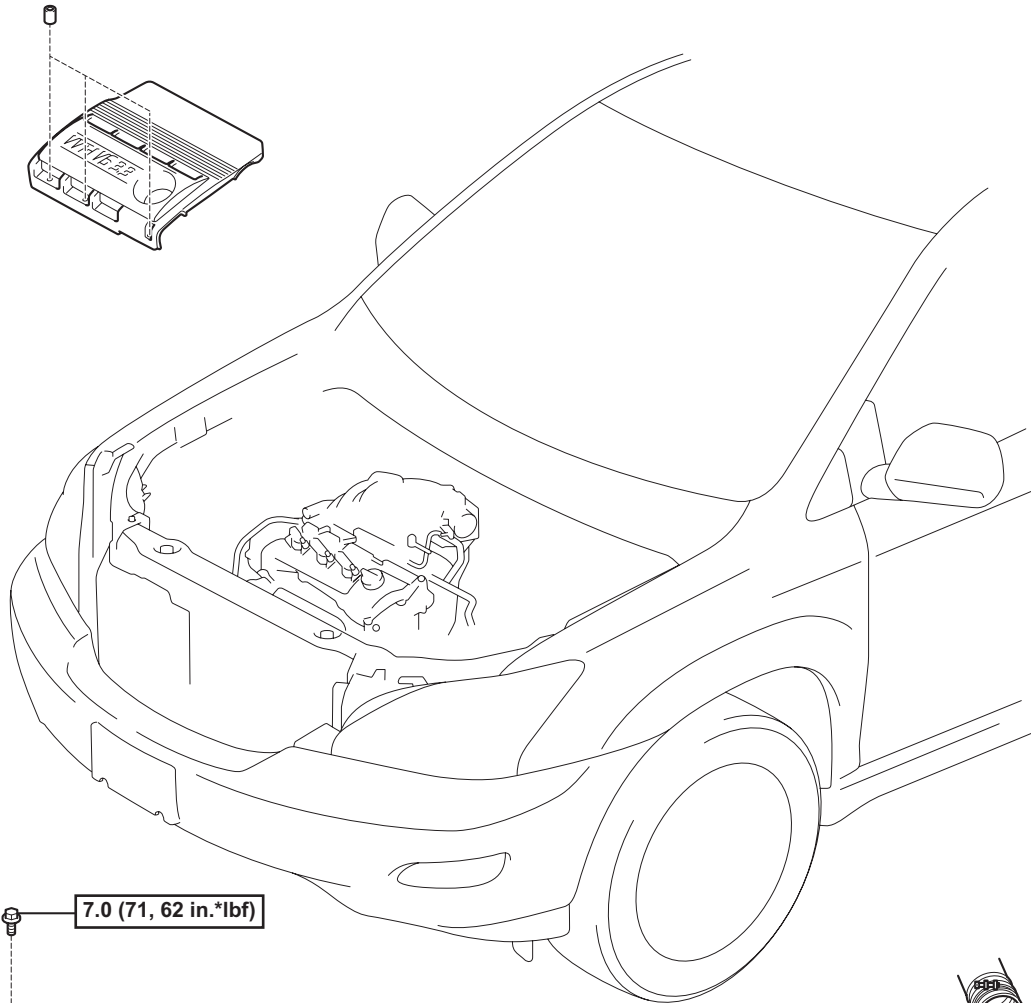
VVT SENSOR COMPONENTS



W/ ENGINE UNDER COVER NO. 2:
ENGINE UNDER COVER NO.2

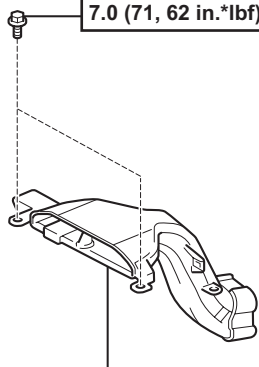


IG



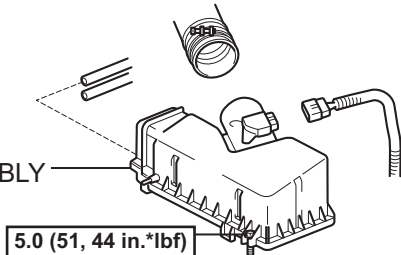
IG

7.0 (71, 62 in.*lbf)



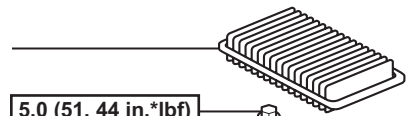
AIR CLEANER INLET NO.2

AIR CLEANER CAP SUB-ASSEMBLY



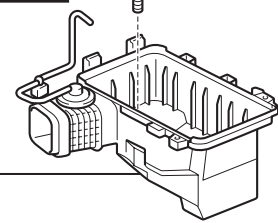
5.0 (51, 44 in.*lbf)

AIR CLEANER FILTER ELEMENT SUB-ASSEMBLY

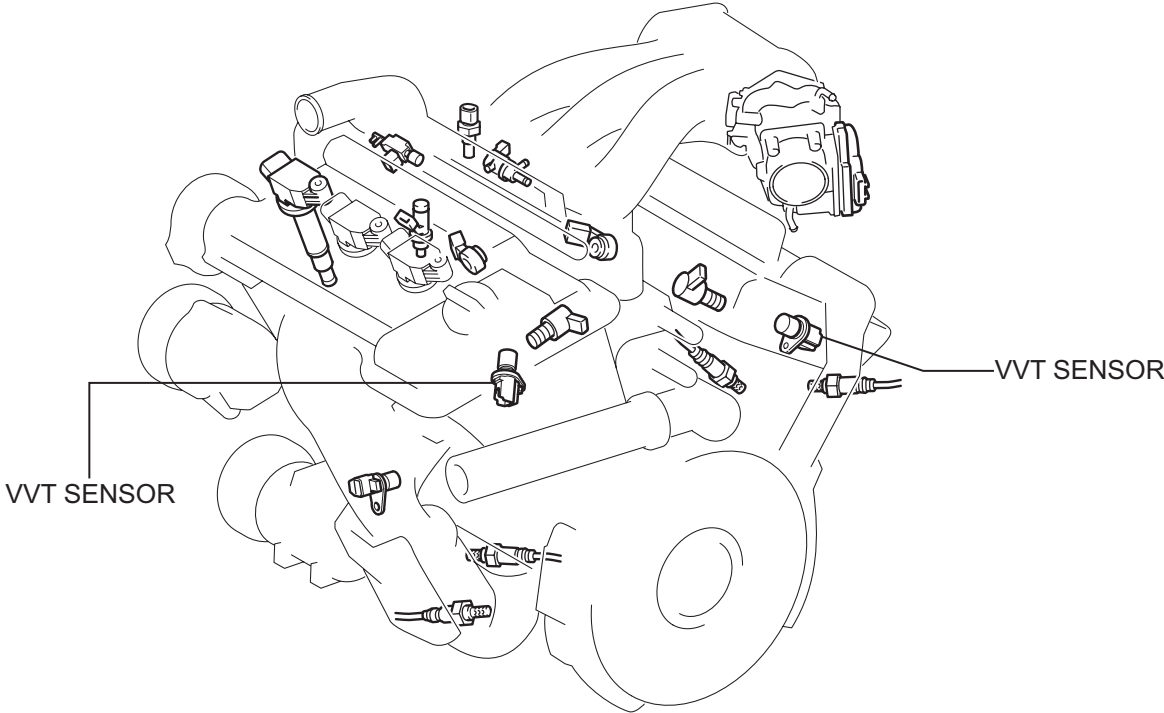


5.0 (51, 44 in.*lbf)

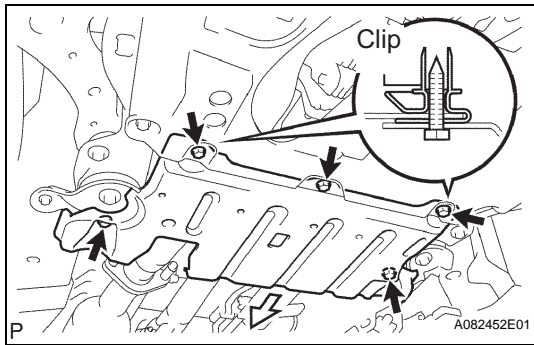
AIR CLEANER CASE



N*m (kgf*cm, ft.*lbf) : Specified torque



IG



REMOVAL

1. **REMOVE ENGINE UNDER COVER NO.2**
 - (a) w/ engine under cover No. 2.
 - (1) Remove the clip, 2 screws and 2 bolts
 - (2) Slide the engine under cover No. 2 toward the rear to detach it from the retainers, and then remove the engine under cover No. 2.
2. **REMOVE AIR CLEANER INLET NO.2 (See page ST-5)**
3. **REMOVE AIR CLEANER ASSEMBLY (See page ST-5)**
4. **REMOVE VVT SENSOR**
 - (a) Disconnect the 2 VVT sensor connectors.
 - (b) Remove the 2 bolts, and then remove the 2 VVT sensors.

