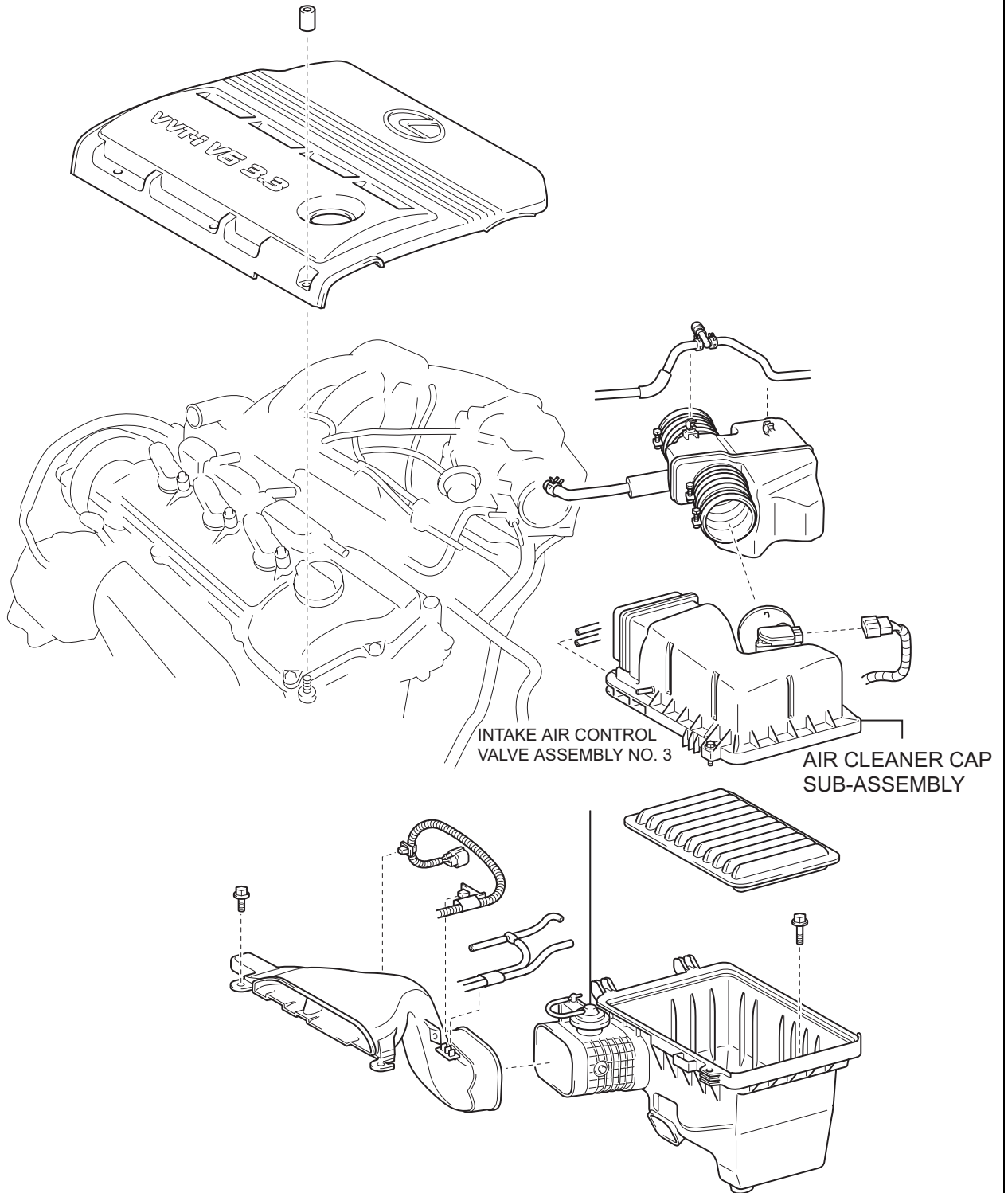
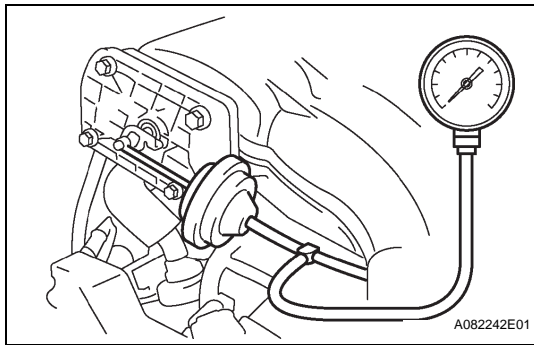


INTAKE AIR CONTROL SYSTEM

PARTS LOCATION



IT



ON-VEHICLE INSPECTION

1. INSPECT INTAKE AIR CONTROL SYSTEM

- (a) Using a 3-way connector, connect vacuum gauge to the actuator hose.
- (b) Connect the intelligent tester to the DLC3.
- (c) Start the engine.
- (d) Select the active test mode according to the message on the intelligent tester.

Vacuum

Switch Condition	Vacuum
VSV ON	Approx. 27.6 kPa (200 mmHg, 7.9 in.Hg)
VSV OFF	0 kPa (0 mmHg, 0 in.Hg)