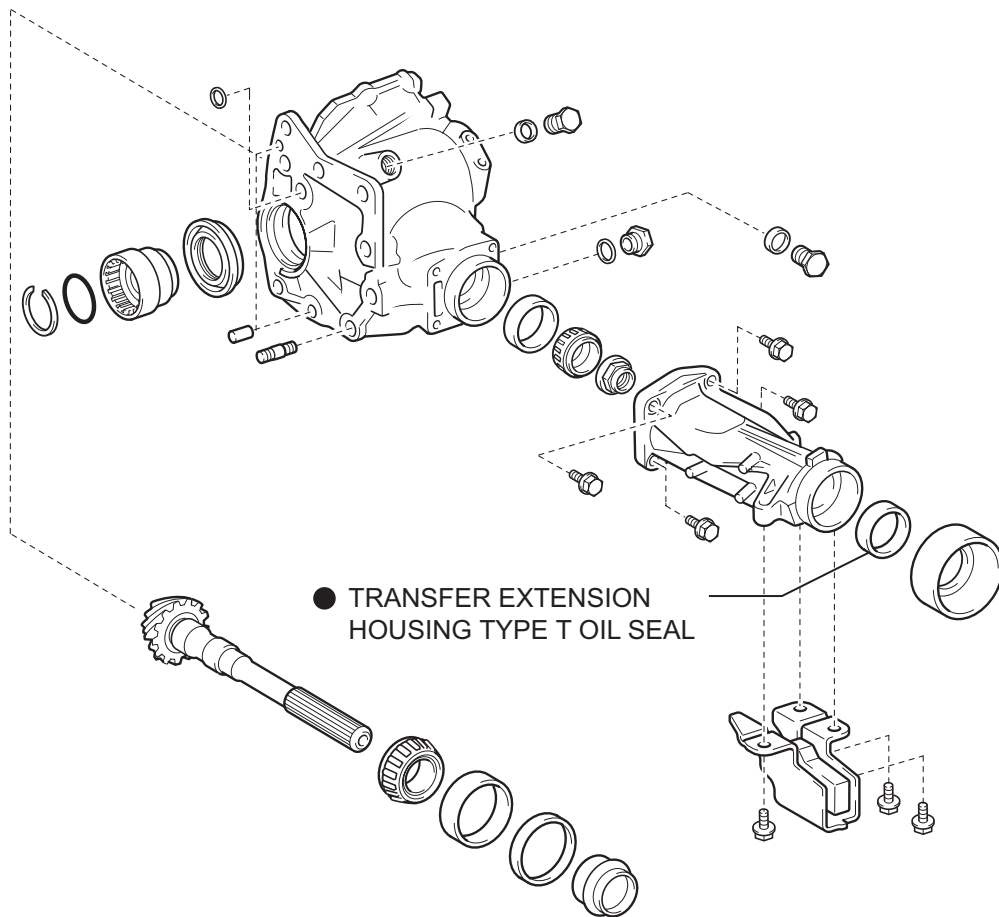


EXTENSION HOUSING OIL SEAL

COMPONENTS



● Non-reusable part

REMOVAL

1. **REMOVE TRANSFER CASE NO.1 PLUG** (See page [TF-14](#))
2. **REMOVE TRANSFER DRAIN PLUG**
 - (a) Remove the transfer drain plug, drain gasket and bleed transfer oil.
3. **REMOVE EXHAUST PIPE ASSEMBLY**

HINT:
(See page [EX-3](#))
4. **REMOVE PROPELLER W/CENTER BEARING SHAFT ASSEMBLY**

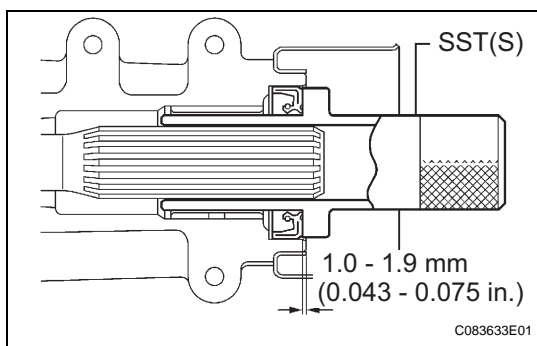
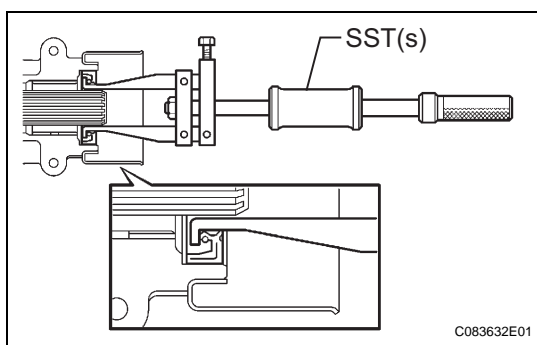
HINT:
(See page [PR-3](#))
5. **REMOVE TRANSFER EXTENSION HOUSING TYPE T OIL SEAL**

- (a) Using SST(S), remove the transfer extension housing type T oil seal from the transfer extension housing sub-assembly.

SST 09308-00010

NOTICE:

Be careful not to damage the oil-seal-fitted surface and the inside surface of the bush.



INSTALLATION

1. **INSTALL TRANSFER EXTENSION HOUSING TYPE T OIL SEAL**
 - (a) Using SST(s), install anew transfer extension housing type T oil seal to he transfer extension housing sub-assembly at the position show in the illustration.

SST 09325-20010

NOTICE:
Do not install the oil seal obliquely.

 - (b) Apply small amount of MP grease to the oil seal lip.
2. **TEMPORARILY TIGHTEN PROPELLER W/CENTER BEARING SHAFT ASSEMBLY**

HINT:
(See page [PR-9](#))
3. **FULLY TIGHTEN PROPELLER W/CENTER BEARING SHAFT ASSEMBLY**

HINT:
(See page [PR-9](#))
4. **INSTALL EXHAUST PIPE ASSEMBLY**

HINT:
(See page [EX-6](#))
5. **CHECK FOR EXHAUST GAS LEAKAGE**

HINT:
(See page [EX-6](#))

6. INSTALL TRANSFER DRAIN PLUG

- (a) Install the transfer drain plug with a new drain gasket.

Torque: 49 N*m (50 kgf*cm, 36 ft.*lbf)

7. INSTALL TRANSFER CASE NO.1 PLUG

- (a) Add oil up to 0 to 5 mm (0 to 0.20 in.) below the lower side of the plug hole.

Oil amount:

0.9 L (0.95 US qts, 0.71 Imp.qts)

NOTICE:

When supplying oil, pour do it slowly.

- (b) Install the transfer case No. 1 plug with a new gasket No. 1.

Torque: 49 N*m (500 kgf*cm, 36 ft.*lbf)