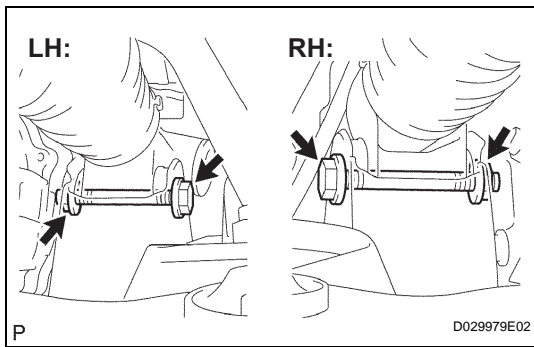


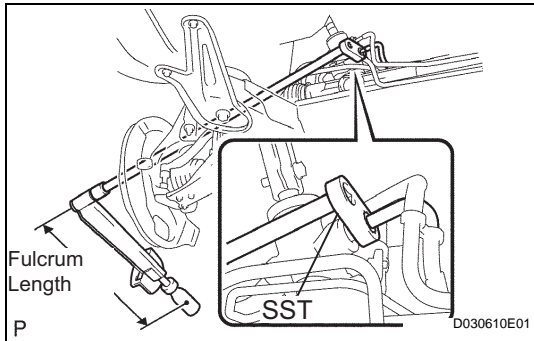
## INSTALLATION



### 1. INSTALL POWER STEERING LINK ASSEMBLY

- (a) Install the power steering link assembly with the 2 bolts and the nuts.

**Torque: 70 N\*m (714 kgf\*cm, 52 ft.\*lbf)**



### 2. CONNECT PRESSURE FEED TUBE ASSEMBLY

- (a) Using SST, connect the pressure feed tube assembly to the steering link assembly.

**SST 09023-12701**

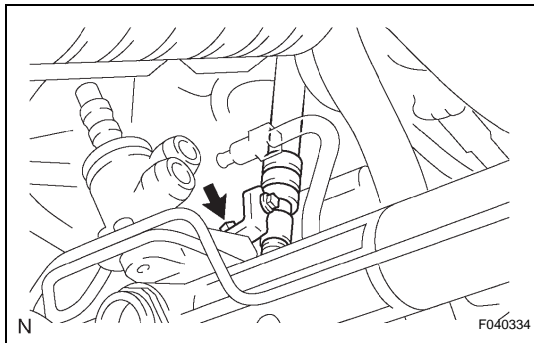
**Torque: 22 N\*m (230 kgf\*cm, 16 ft.\*lbf)**

HINT:

- Use a torque wrench with a fulcrum length of 300 mm (11.81 in.).
- This torque value is effective when SST is parallel to a torque wrench.

- (b) Install the pressure feed tube assembly clamp with the bolt.

**Torque: 9.8 N\*m (100 kgf\*cm, 87 in.\*lbf)**



### 3. CONNECT RETURN TUBE ASSEMBLY

- (a) Using SST, connect the return tube assembly to the steering link assembly.

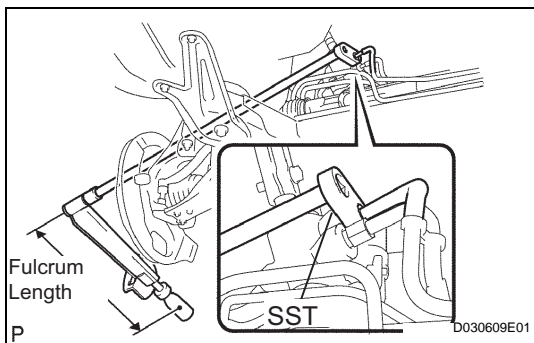
**SST 09023-12701**

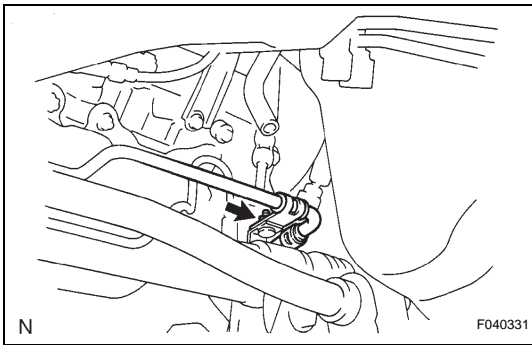
**Torque: 22 N\*m (230 kgf\*cm, 16 ft.\*lbf)**

HINT:

- Use a torque wrench with a fulcrum length of 300 mm (11.81 in.).
- This torque value is effective when SST is parallel to a torque wrench.

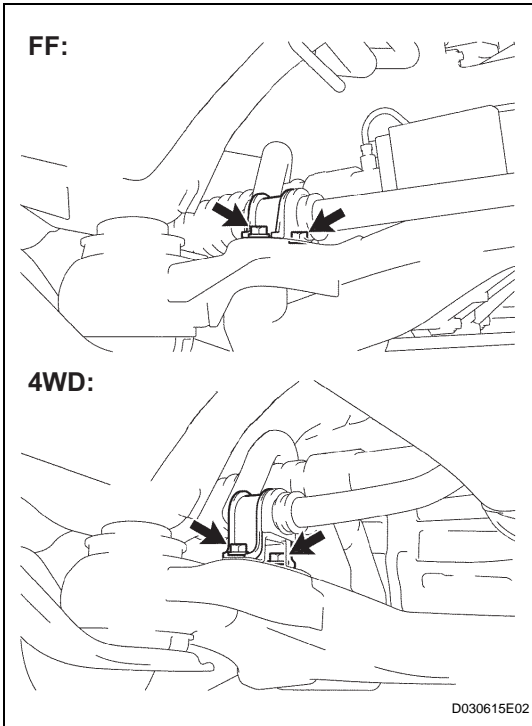
- (b) Install the tube clamp to the pressure feed tube assembly.





- (c) Install the pressure feed tube clamp with the nut.  
**Torque: 9.8 N\*m (100 kgf\*cm, 87 in.\*lbf)**

**4. INSTALL HEIGHT CONTROL SENSOR SUB-ASSEMBLY FRONT LH (See page [SC-125](#))**



**5. INSTALL FRONT STABILIZER BRACKET NO.1 LH**

- (a) FF:  
 Install the stabilizer bracket No. 1 LH with the 2 bolts.  
**Torque: 16 N\*m (163 kgf\*cm, 12 ft.\*lbf)**
- (b) 4WD:  
 Install the stabilizer bracket No. 1 LH and the stabilizer bracket No. 2 with the 2 bolts.  
**Torque: 16 N\*m (163 kgf\*cm, 12 ft.\*lbf)**

**6. INSTALL FRONT STABILIZER BRACKET NO.1 RH**

- HINT:  
 Perform the same procedure on the other side.

**7. INSTALL EXHAUST PIPE ASSEMBLY FRONT (See page [EX-6](#))**

**8. CONNECT FRONT STABILIZER LINK ASSEMBLY LH (See page [SP-29](#))**

- 9. CONNECT FRONT STABILIZER LINK ASSEMBLY RH**  
 HINT:  
 Perform the same procedure on the other side.

**10. CONNECT TIE ROD ASSEMBLY LH**

**11. CONNECT TIE ROD ASSEMBLY RH**

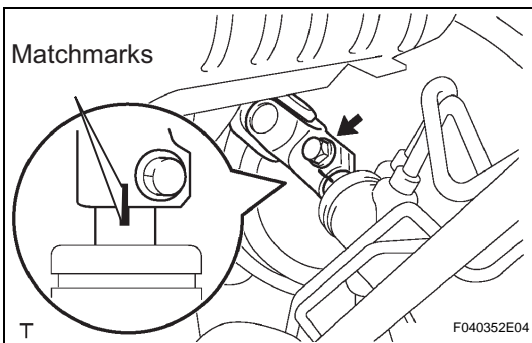
- HINT:  
 Perform the same procedure on the other side.

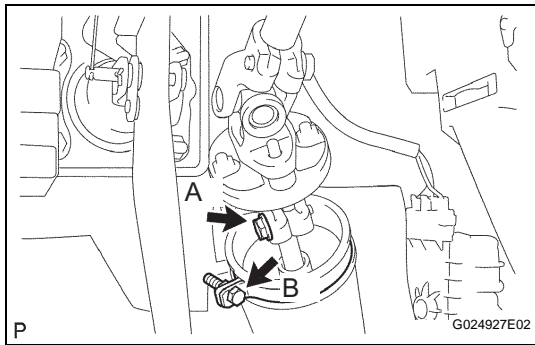
**12. INSTALL FRONT WHEEL**

- Torque: 103 N\*m (1,050 kgf\*cm, 76 ft.\*lbf)**

**13. CONNECT STEERING INTERMEDIATE SHAFT SUB-ASSEMBLY**

- (a) Align the matchmarks on the intermediate shaft sub-assembly and the steering link assembly.
- (b) Install the bolt.  
**Torque: 35 N\*m (360 kgf\*cm, 26 ft.\*lbf)**





(c) Tighten the bolt A.

**Torque: 35 N\*m (360 kgf\*cm, 26 ft.\*lbf)**

(d) Install the steering column hole cover No. 2 to the steering hole cover No. 1.

(e) Install the clamp to the steering column hole cover No. 1 and tighten the bolt B.

**14. BLEED POWER STEERING FLUID (See page PS-3)**

**15. CHECK POWER STEERING FLUID LEAKAGE**

**16. CHECK FOR EXHAUST GAS LEAKS**

**17. INSPECT STEERING WHEEL CENTER POINT**