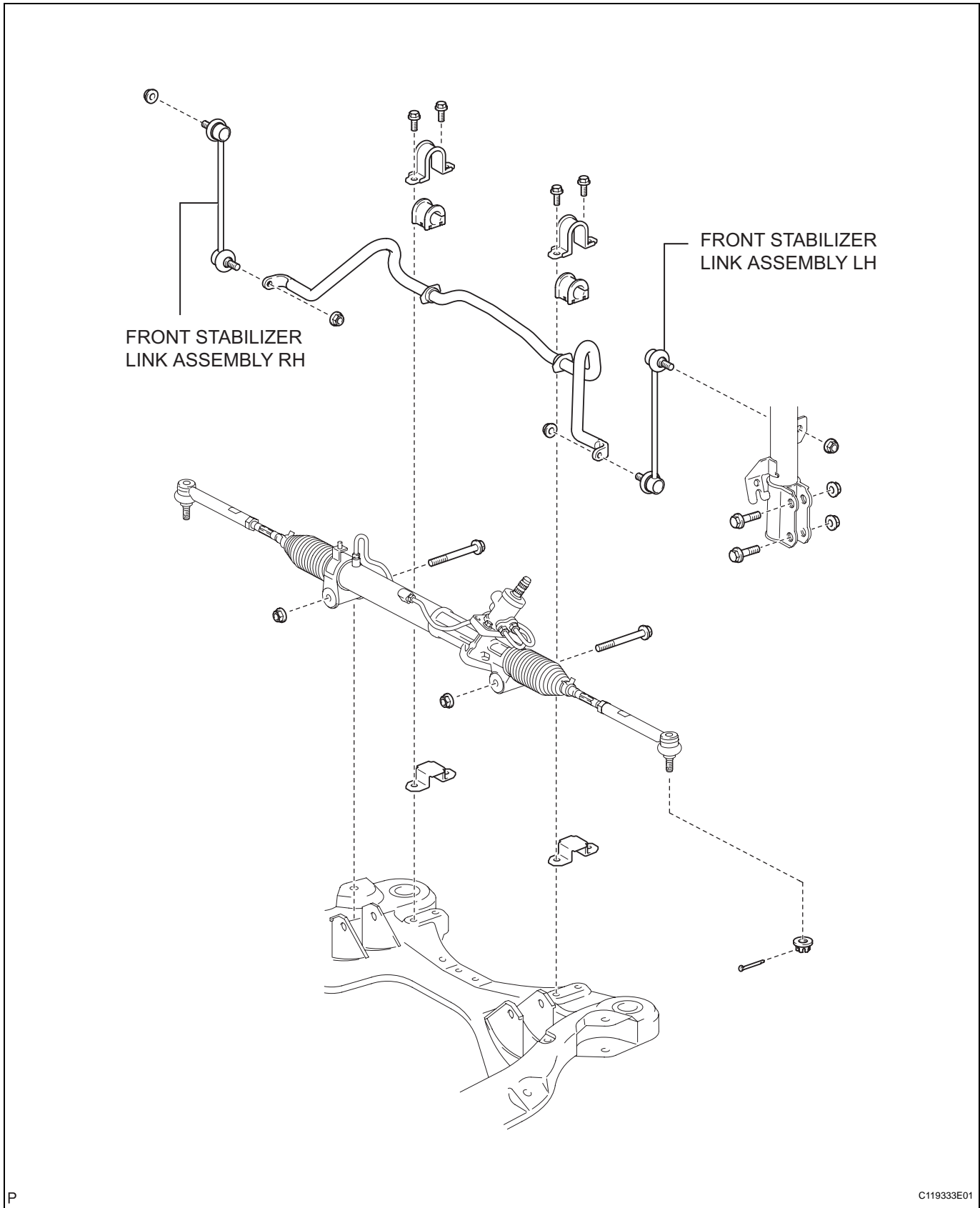


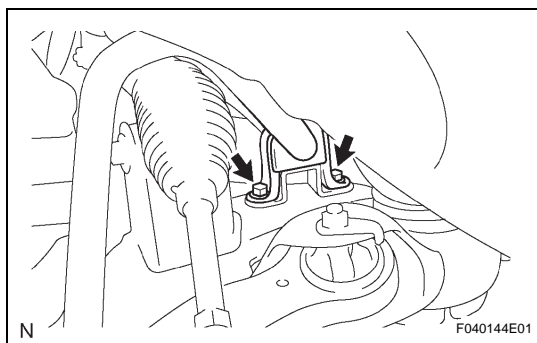
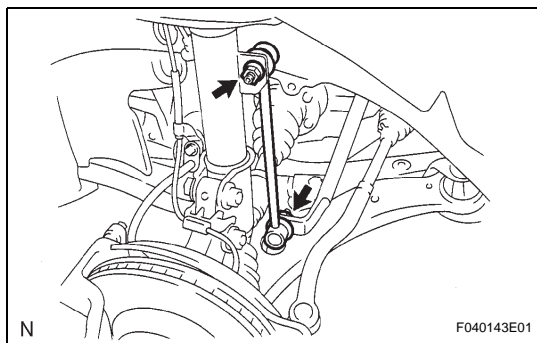
FRONT STABILIZER BAR (for 2WD)

COMPONENTS

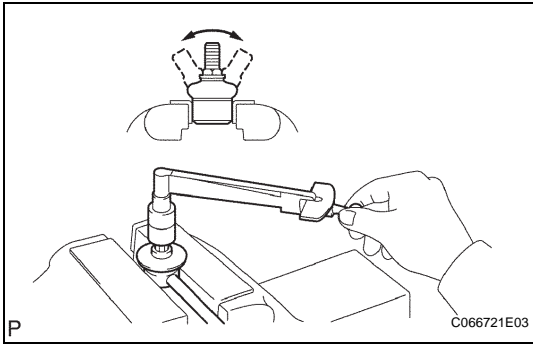


SP

REMOVAL



1. **REMOVE FRONT WHEEL**
2. **REMOVE FRONT STABILIZER LINK ASSEMBLY LH**
 - (a) Remove the 2 nuts and the front stabilizer link assembly LH.
HINT:
If the ball joint turns together with the nut, use a hexagon (6 mm) wrench to hold the stud.
3. **REMOVE FRONT STABILIZER LINK ASSEMBLY RH**
HINT:
Remove the RH side following the same procedures as with the LH side.
4. **REMOVE FRONT STABILIZER BRACKET NO.1 LH**
 - (a) Remove the 2 bolts and the 2 front stabilizer No. 1 LH.
5. **REMOVE FRONT STABILIZER BRACKET NO.1 RH**
HINT:
Remove the RH side following the same procedures as with the LH side.
6. **REMOVE FRONT STABILIZER BRACKET NO.2 LH**
 - (a) Remove the front stabilizer bracket No. 2 LH from the stabilizer bar bush.
7. **REMOVE FRONT STABILIZER BRACKET NO.2 RH**
HINT:
Remove the RH side following the same procedures as with the LH side.
8. **DISCONNECT TIE ROD END SUB-ASSEMBLY LH**
SST 09628-62011
9. **DISCONNECT TIE ROD END SUB-ASSEMBLY RH**
SST 09628-62011
HINT:
Disconnect the RH side by the same procedures with the LH side.
10. **SEPARATE STEERING INTERMEDIATE SHAFT SUB-ASSEMBLY**
11. **DISCONNECT STEERING GEAR OUTLET RETURN TUBE**
SST 09023-12701
12. **DISCONNECT PRESSURE FEED TUBE ASSEMBLY**
SST 09023-12701
13. **REMOVE POWER STEERING LINK ASSEMBLY**
14. **REMOVE FRONT STABILIZER BAR BUSH NO.1**
 - (a) Remove the 2 bushes from the stabilizer.
15. **REMOVE STABILIZER BAR FRONT**
 - (a) Remove the stabilizer bar front from the vehicle..



INSPECTION

- 1. INSPECT FRONT STABILIZER LINK ASSEMBLY LH**
 - (a) As shown in the illustration, flip the ball joint stud back and forth 5 times before installing the nut.
 - (b) Using a torque wrench, turn the nut continuously at a rate of 2 to 4 seconds per turn and take the torque reading on the 5th turn.

Turning torque:

0.05 to 1.96 N*m (0.5 to 20 kgf*cm, 0.4 to 17.4 in.*lbf)