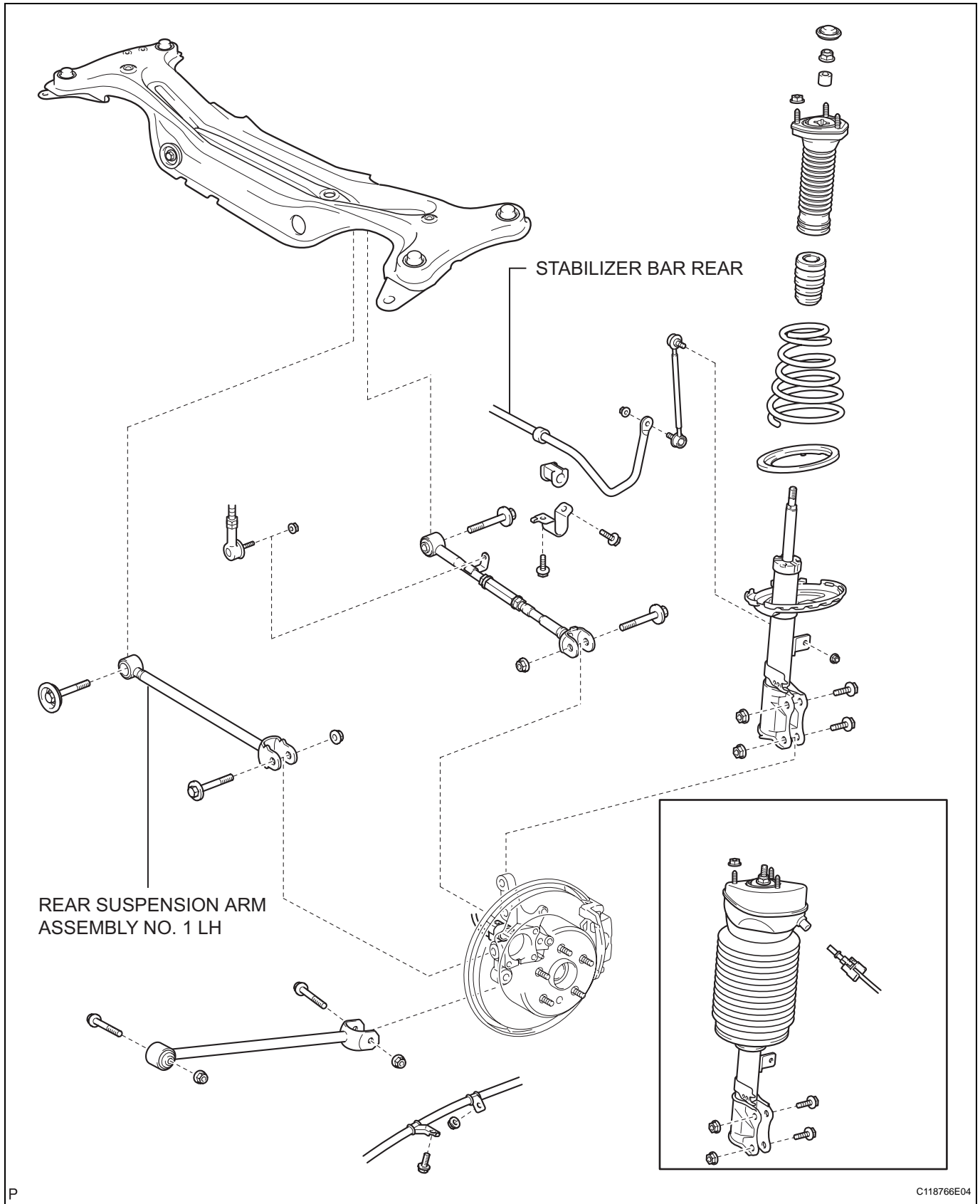


REAR SUSPENSION NO. 1 ARM (for 2WD)

COMPONENTS



REMOVAL

NOTICE:

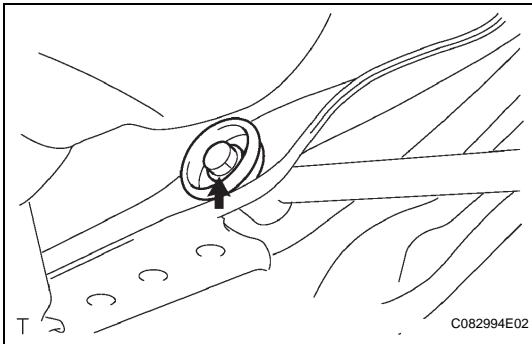
- Press the height control switch to stop the vehicle height control operation before jacking up or lifting up the vehicle with air suspension.
- Press the height control switch to operate the vehicle height control after jacking down or lifting down the vehicle with air suspension.
- Support the rear axle carrier with a jack.

1. REMOVE REAR WHEEL

2. REMOVE STABILIZER BAR REAR (See page [SP-67](#))

3. REMOVE REAR SUSPENSION ARM ASSEMBLY NO. 1 LH

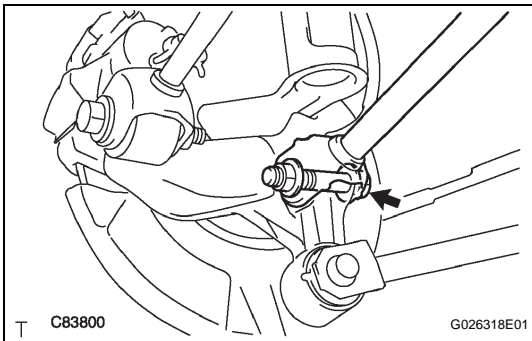
- (a) Remove the bolt and disconnect the rear suspension arm assembly No. 1 (inner side).



- (b) Remove the bolt, nut and the rear suspension arm assembly No. 1 (outer side) from the rear axle carrier.

NOTICE:

When removing the bolt, keep the nut from rotating.



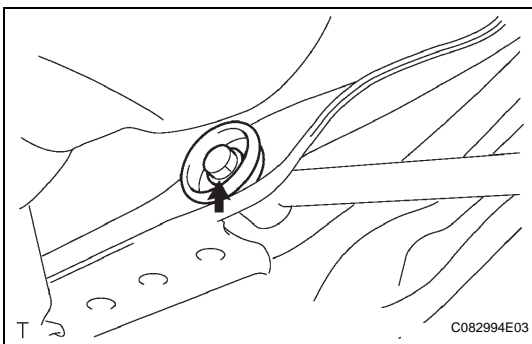
INSTALLATION

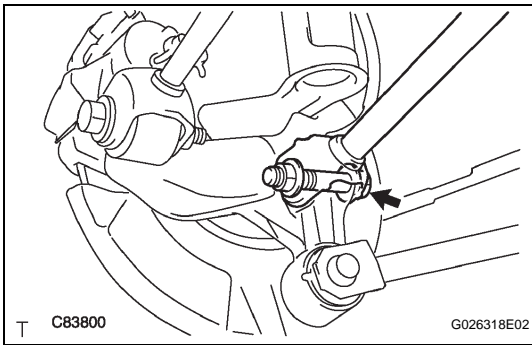
1. TEMPORARILY TIGHTEN REAR SUSPENSION ARM ASSEMBLY NO. 1 LH

- (a) Install the rear suspension arm assembly No. 1 (inner side) with the bolt, and temporarily tighten the bolt.

HINT:

Ensure that the paint mark faces to the rear.



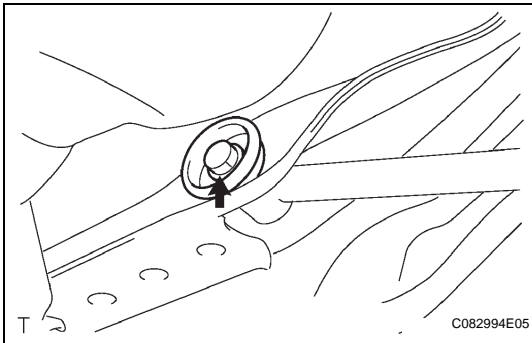


- (b) Connect the rear suspension arm assembly No. 1 (outer side) to the rear axle carrier with the bolt and nut, and temporarily tighten the bolt and nut.

NOTICE:

When installing the bolt, tighten the bolt temporarily with the nut fixed.

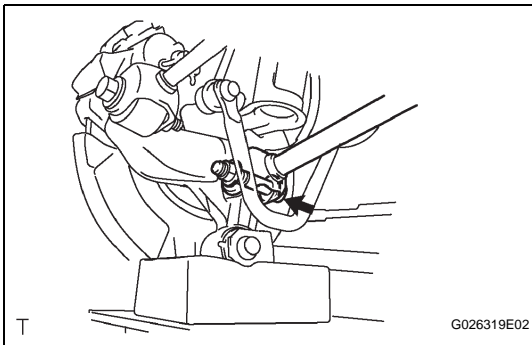
2. STABILIZE SUSPENSION (See page [SP-49](#))



3. FULLY TIGHTEN REAR SUSPENSION ARM ASSEMBLY NO. 1 LH

- (a) Fully tighten the bolt.

Torque: 120 N*m (1,224 kgf*cm, 89 ft.*lbf)



- (b) Fully tighten the bolt.

Torque: 112 N*m (1,140 kgf*cm, 83 ft.*lbf)

4. INSTALL STABILIZER BAR REAR

5. INSTALL REAR WHEEL

Torque: 103 N*m (1,050 kgf*cm, 76 ft.*lbf)

6. INSPECT REAR WHEEL ALIGNMENT

(See page [SP-7](#))