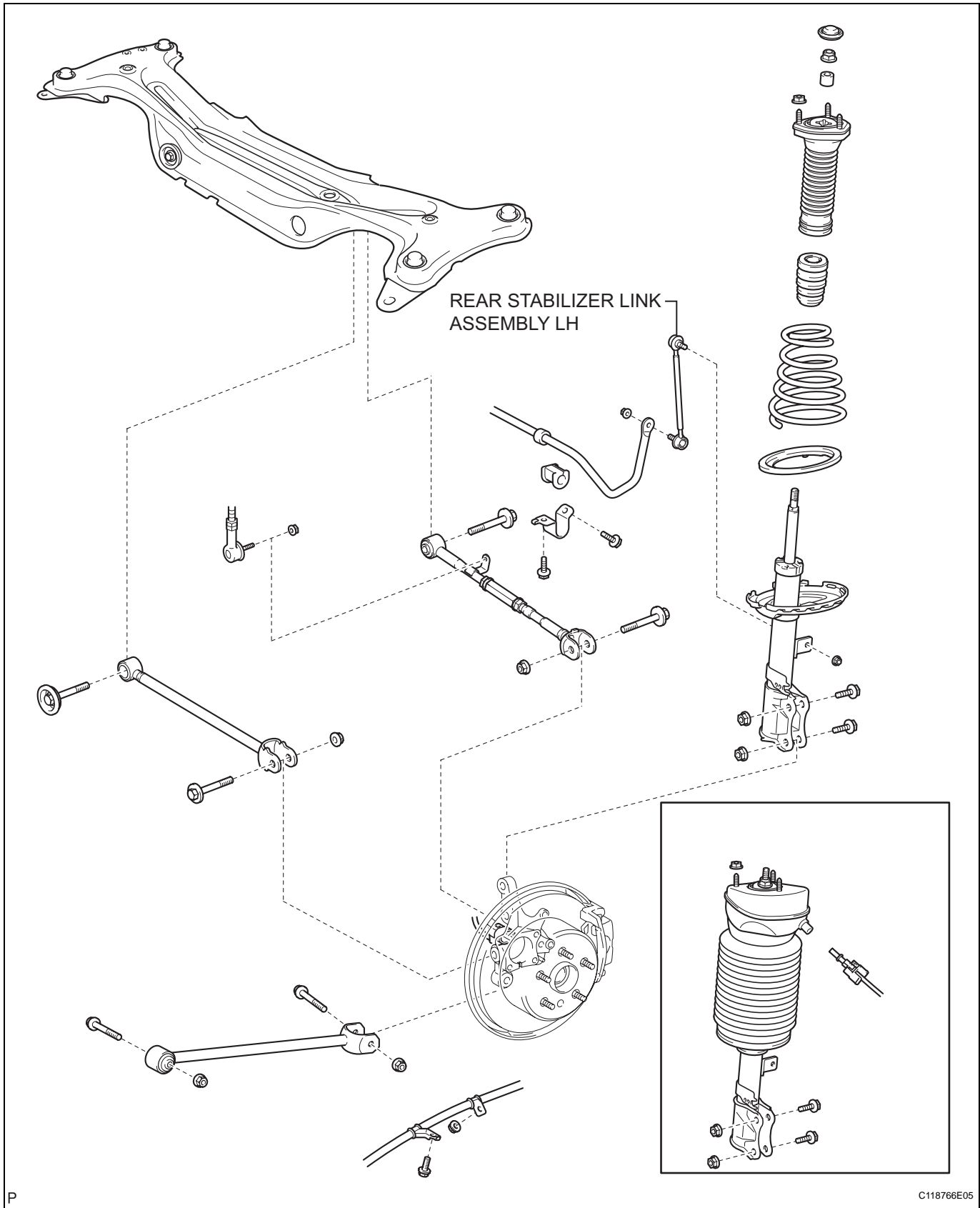


# REAR STABILIZER BAR (for 2WD)

## COMPONENTS



## REMOVAL

### NOTICE:

- Press the height control switch to stop the vehicle height control operation before jacking up or lifting up the vehicle with air suspension.
- Press the height control switch to operate the vehicle height control after jacking down or lifting down the vehicle with air suspension.
- Support the rear axle carrier with a jack.

#### 1. REMOVE REAR WHEEL

#### 2. REMOVE REAR STABILIZER LINK ASSEMBLY LH

- (a) Remove the 2 nuts and rear stabilizer link.

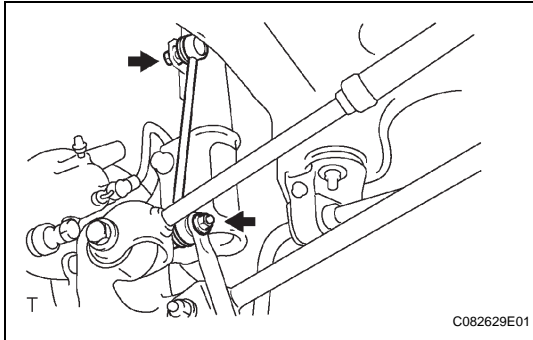
##### HINT:

If the ball joint turns together with the nut, use a hexagon wrench (5 mm) to hold the stud.

#### 3. REMOVE REAR STABILIZER LINK ASSEMBLY RH

##### HINT:

Remove the RH side using the same procedures as for the LH side.

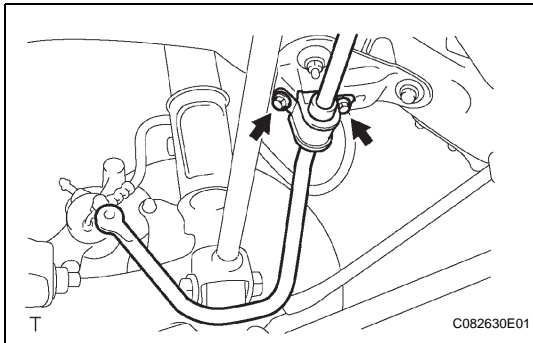


#### 4. REMOVE REAR STABILIZER BAR BRACKET NO.1

- (a) Remove the 4 bolts and stabilizer bar bracket.

#### 5. REMOVE STABILIZER BAR REAR

- (a) Remove the stabilizer bar and 2 stabilizer bushes.



## INSPECTION

#### 1. INSPECT REAR STABILIZER LINK ASSEMBLY LH

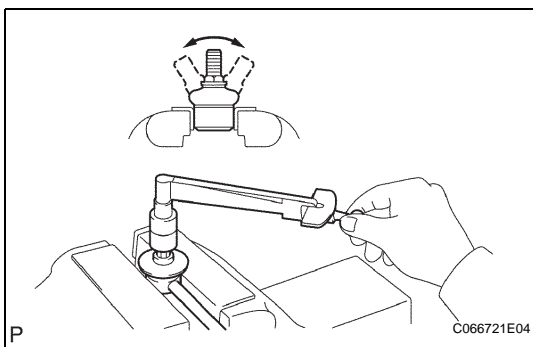
- (a) Before installing the nut, flip the ball joint stud back and forth 5 times as shown in the illustration.
- (b) Using a torque wrench, continuously turn the nut 3 to 5 seconds per turn, and take the torque reading on the 5th turn.

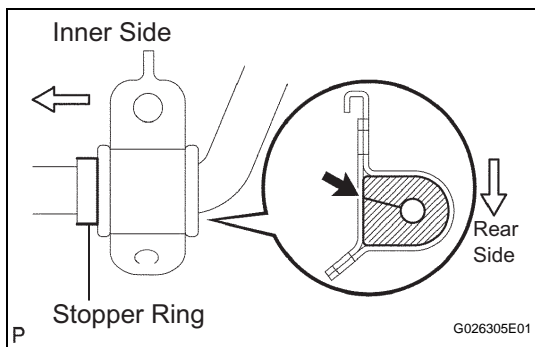
##### Turning torque:

**1.0 N\*m (10 kgf\*cm, 9 in.\*lbf) or less**

##### NOTICE:

- Check that neither unusual drag nor rattle occurs during the rotation.
- Check that neither crack nor grease leakage exists on the dust cover.

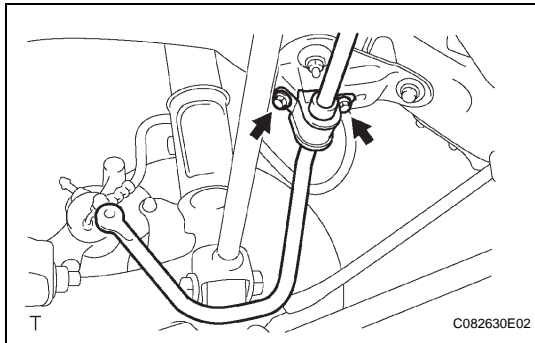




## INSTALLATION

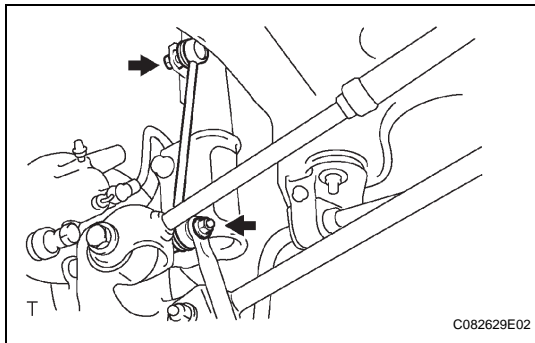
### 1. INSTALL STABILIZER BAR REAR

- (a) Install the stabilizer bush to the outer side of the stopper ring on the stabilizer bar.
- (b) Install the stabilizer bar.



### 2. INSTALL REAR STABILIZER BAR BRACKET NO.1

- (a) Install the stabilizer bar bracket with the 4 bolts.  
**Torque: 19 N\*m (194 kgf\*cm, 14 ft.\*lbf)**



### 3. INSTALL REAR STABILIZER LINK ASSEMBLY LH

- (a) Install the stabilizer link with the 2 nuts.  
**Torque: 39 N\*m (400 kgf\*cm, 29 ft.\*lbf)**  
HINT:  
If the ball joint turns together with the nut, use a hexagon wrench (5 mm) to hold the stud.

### 4. INSTALL REAR STABILIZER LINK ASSEMBLY RH

- HINT:  
Install the RH side using the same procedures as for the LH side.

### 5. INSTALL REAR WHEEL

- Torque: 103 N\*m (1,050 kgf\*cm, 76 ft.\*lbf)**

### 6. INSPECT REAR WHEEL ALIGNMENT