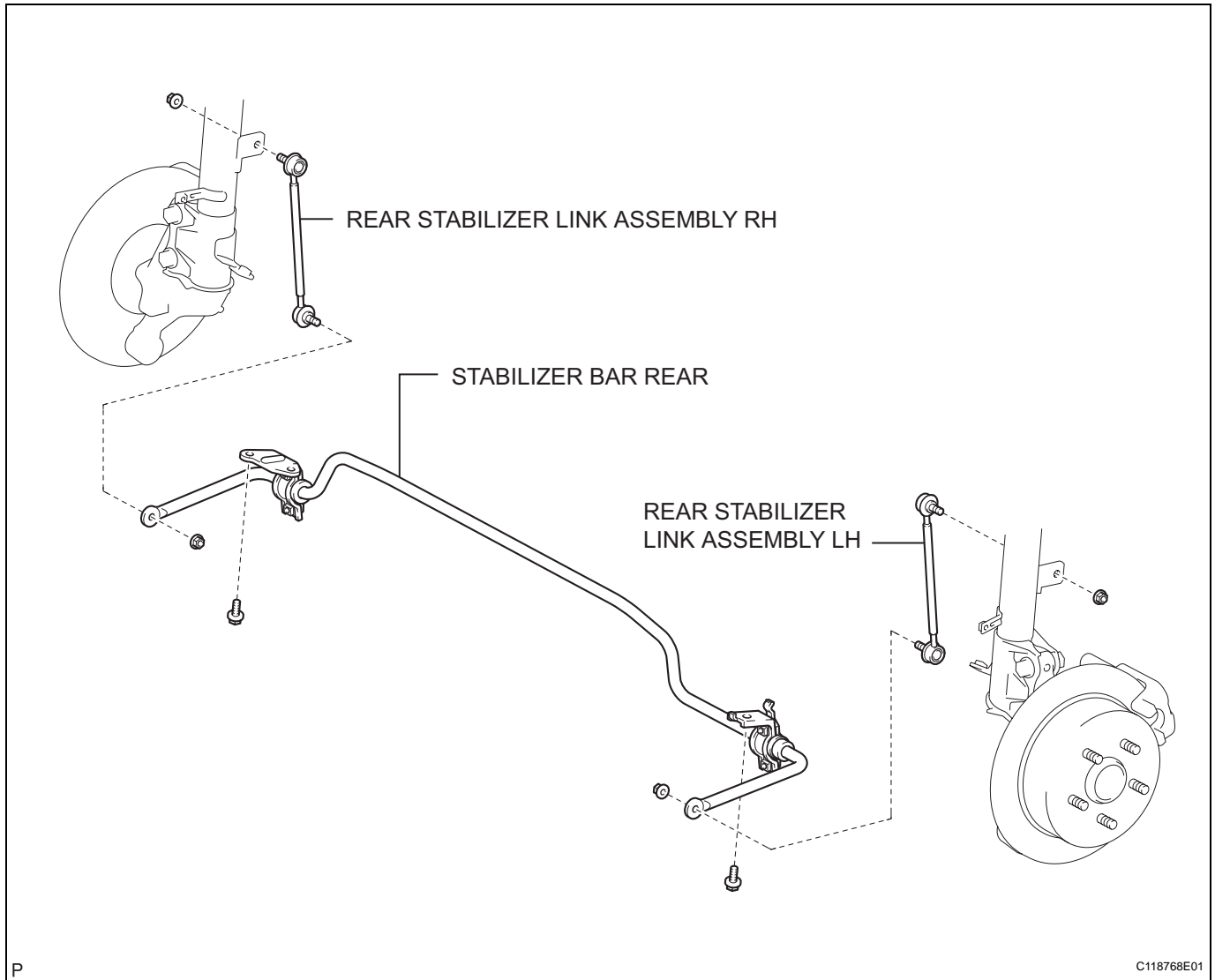


REAR STABILIZER BAR (for 4WD)

COMPONENTS



REMOVAL

NOTICE:

- Press the height control switch to stop the vehicle height control operation before jacking up or lifting up the vehicle with air suspension.
- Press the height control switch to operate the vehicle height control after jacking down or lifting down the vehicle with air suspension.

1. REMOVE REAR WHEEL

2. REMOVE REAR STABILIZER LINK ASSEMBLY LH

- (a) Remove the 2 nuts and stabilizer link.

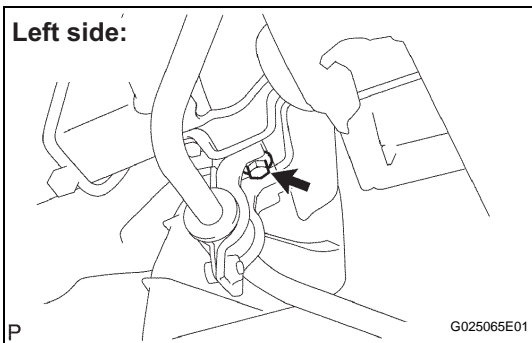
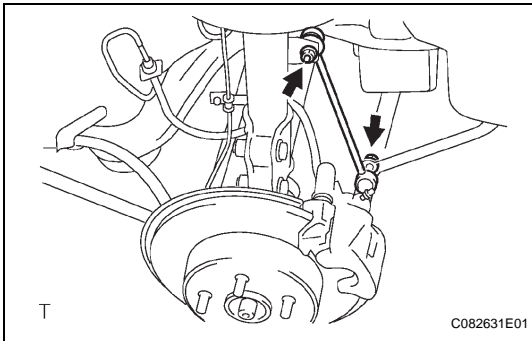
HINT:

If the ball joint turns together with the nut, use a hexagon wrench (5 mm) to hold the stud.

3. REMOVE REAR STABILIZER LINK ASSEMBLY RH

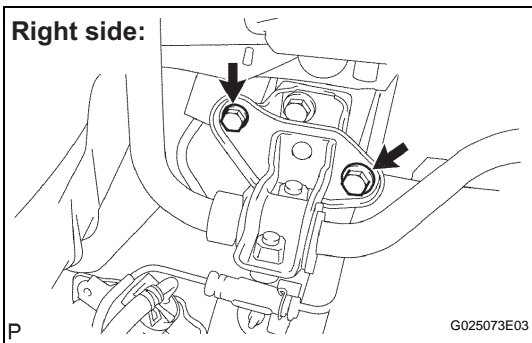
HINT:

Remove the RH side using the same procedures as for the LH side.



4. REMOVE STABILIZER BAR REAR

- (a) Left side:
Remove the bolt.



- (b) Right side:
Remove the 3 bolts and stabilizer bar.

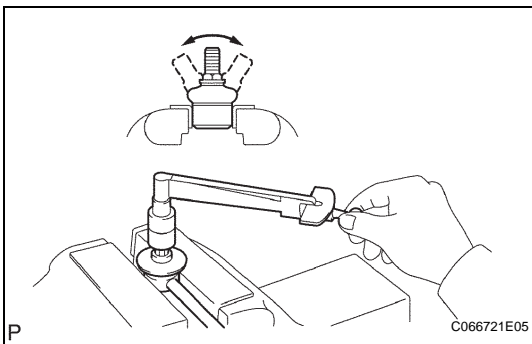
INSPECTION

1. INSPECT REAR STABILIZER LINK ASSEMBLY LH

- (a) Before installing the nut, flip the ball joint stud back and forth 5 times as shown in the illustration.
- (b) Using a torque wrench, continuously turn the nut 3 to 5 seconds per turn, and take the torque reading on the 5th turn.

Turning torque:

1.0 N*m (10 kgf*cm, 9 in.*lbf) or less

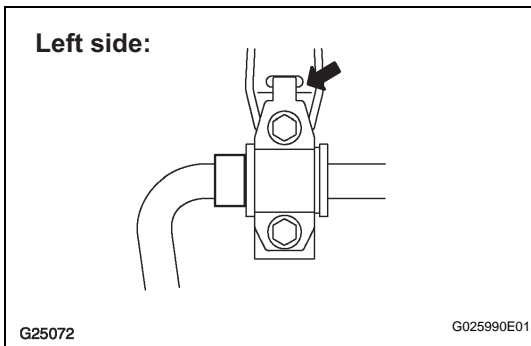


NOTICE:

- Check that neither unusual drag nor rattle occurs during the rotation.
- Check that neither crack nor grease leakage exists on the dust cover.

INSTALLATION**1. INSTALL STABILIZER BAR REAR**

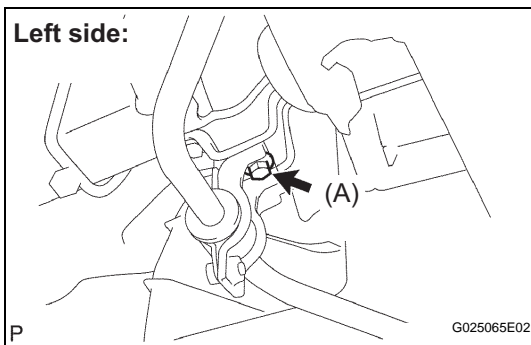
(a) Install the stabilizer bracket.



(b) Left side:

Torque: Bolt A

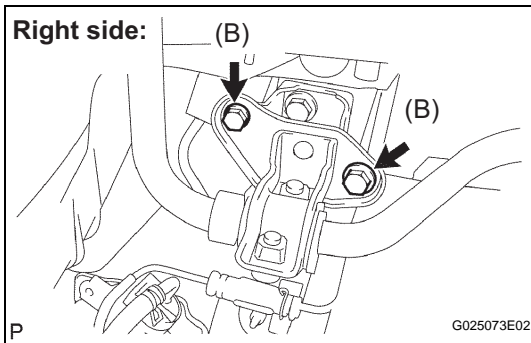
54 N*m (550 kgf*cm, 40 ft.*lbf)



(c) Right side:

Torque: Bolt B

19 N*m (194 kgf*cm, 14 ft.*lbf)

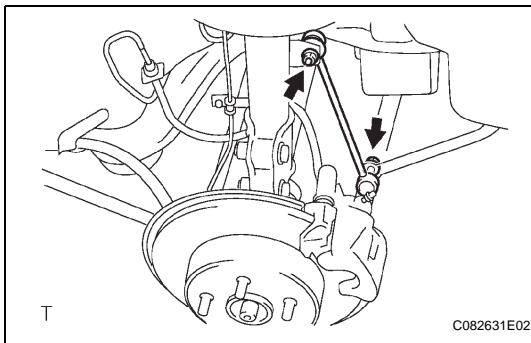
**2. INSTALL REAR STABILIZER LINK ASSEMBLY LH**

(a) Install the stabilizer link with the 2 nuts.

Torque: 39 N*m (400 kgf*cm, 29 ft.*lbf)

HINT:

If the ball joint turns together with the nut, use a hexagon wrench (5 mm) to hold the stud.

**3. INSTALL REAR STABILIZER LINK ASSEMBLY RH**

HINT:

Install the RH side using the same procedures as for the LH side.

4. INSTALL REAR WHEEL

Torque: 103 N*m (1,050 kgf*cm, 76 ft.*lbf)

5. INSPECT REAR WHEEL ALIGNMENT