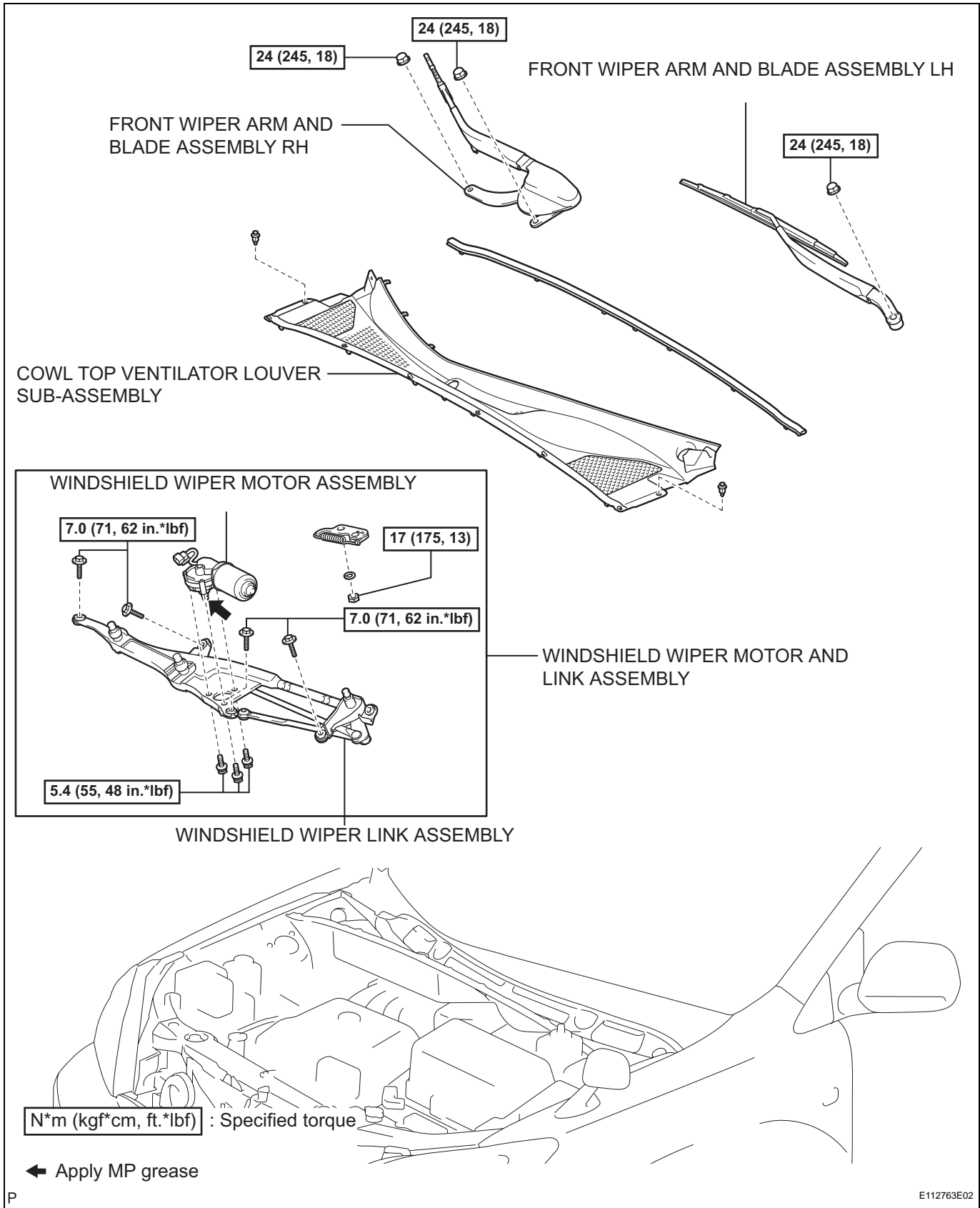


# FRONT WIPER MOTOR

## COMPONENTS



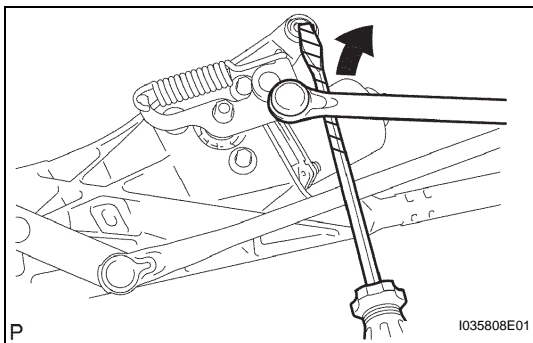
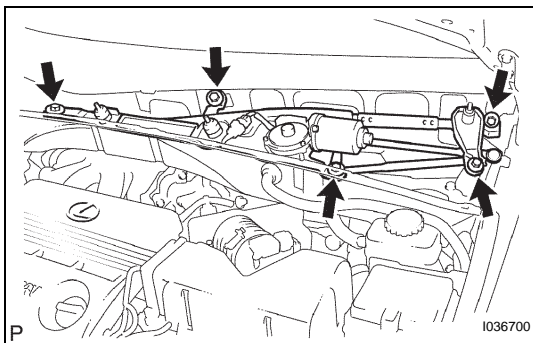
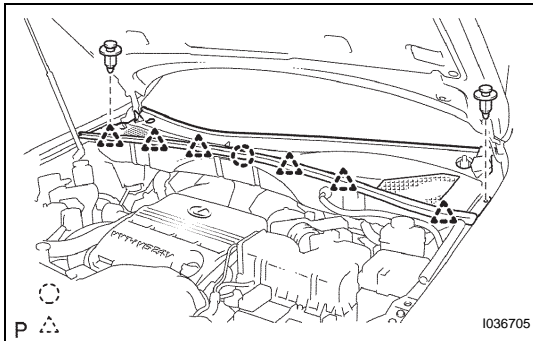
## REMOVAL

### 1. REMOVE FRONT WIPER ARM AND BLADE ASSEMBLY RH

- Remove the 2 nuts and the front wiper arm and blade assembly RH.

### 2. REMOVE FRONT WIPER ARM AND BLADE ASSEMBLY LH

- Remove the nut and the front wiper arm and blade assembly LH.



### 3. REMOVE COWL TOP VENTILATOR LOUVER SUB-ASSEMBLY

- Remove the 2 clips.
- Disengage the 6 claws and the clamp, and remove the cowl top ventilator louver sub-assembly.

### 4. REMOVE WINDSHIELD WIPER MOTOR AND LINK ASSEMBLY

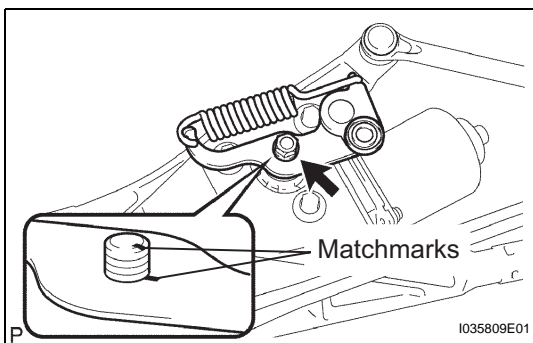
- Disconnect the connector.

- Remove the 5 bolts and the windshield wiper motor and link assembly.

WW

### 5. REMOVE WINDSHIELD WIPER MOTOR ASSEMBLY

- Using a screwdriver wrapped with protective tape, separate the rod of the wiper link assembly from the windshield wiper motor assembly as shown in the illustration.



- Remove the nut and washer. Then, put the matchmarks on the crank arm assembly and windshield wiper motor assembly.