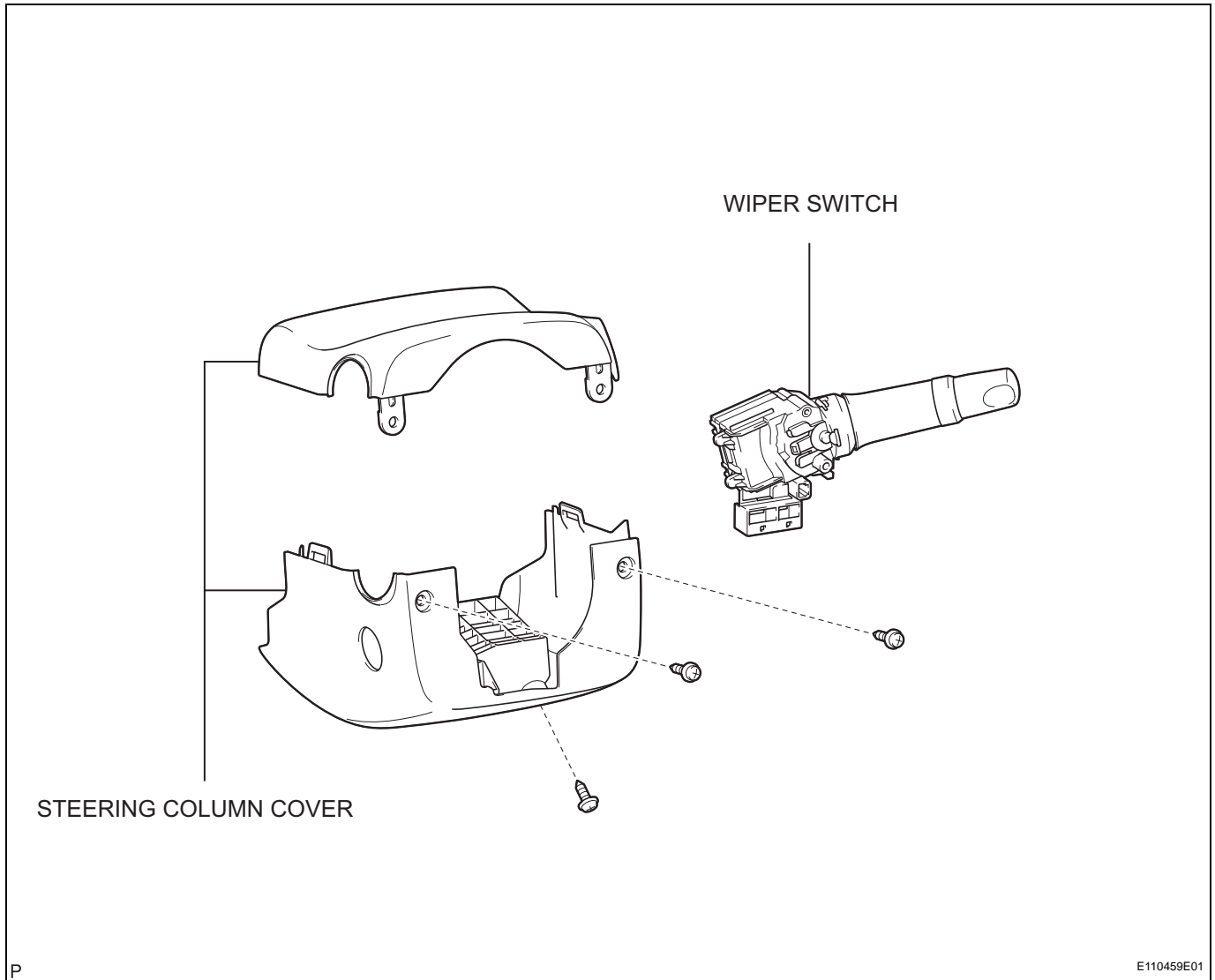


WIPER SWITCH COMPONENTS

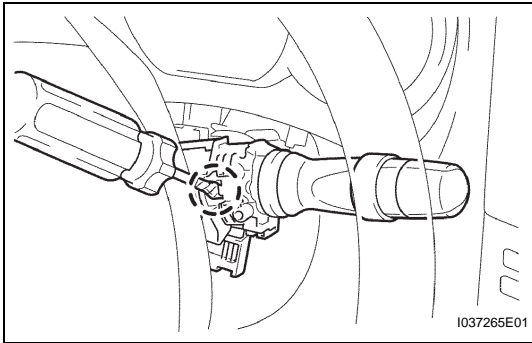


REMOVAL

1. REMOVE STEERING COLUMN COVER (for Manual Tilt) (See page [SR-40](#))
2. REMOVE STEERING COLUMN COVER (for Power Tilt and Power Telescopic) (See page [SR-51](#))
3. REMOVE WIPER SWITCH
 - (a) Disconnect the connector.
 - (b) Using a screwdriver wrapped with protective tape, disengage the claw and remove the wiper switch.

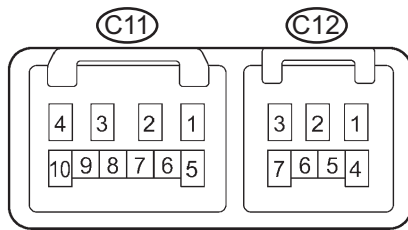
NOTICE:

If the claw is pushed with excessive force, it may be broken.



I037265E01

Connector Front View:



H

E069286E02

INSPECTION

1. INSPECT WIPER SWITCH
 - (a) Check the continuity of wiper switch.
 - (1) Measure the resistance according to the value(s) in the table below.

Standard resistance:

Front Wiper Switch (w/o Rain Sensor)

Switch position	Tester connection	Specified resistance
MIST	C11-2 (+B) - C11-3 (+1)	Below 1 Ω
OFF	C11-1 (+S) - C11-3 (+1)	Below 1 Ω
INTO	C11-1 (+S) - C11-3 (+1)	Below 1 Ω
LO	C11-2 (+B) - C11-3 (+1)	Below 1 Ω
HI	C11-2 (+B) - C11-4 (+2)	Below 1 Ω

Front Wiper Switch (w/ Rain Sensor)

Switch position	Tester connection	Specified resistance
MIST	C11-2 (+B) - C11-3 (+1)	Below 1 Ω
OFF	C11-1 (+S) - C11-3 (+1)	Below 1 Ω
AUTO	C11-1 (+S) - C11-3 (+1), C11-9 (AUTO) - C12-10 (E)	Below 1 Ω
LO	C11-2 (+B) - C11-3 (+1)	Below 1 Ω
HI	C11-2 (+B) - C11-4 (+2)	Below 1 Ω

Rear Wiper Switch

Switch position	Tester connection	Specified resistance
OFF	-	10 kΩ or higher
INTO	C12-2 (EW) - C12-6 (C1R)	Below 1 Ω
ON	C12-2 (EW) - C12-7 (+1R)	Below 1 Ω

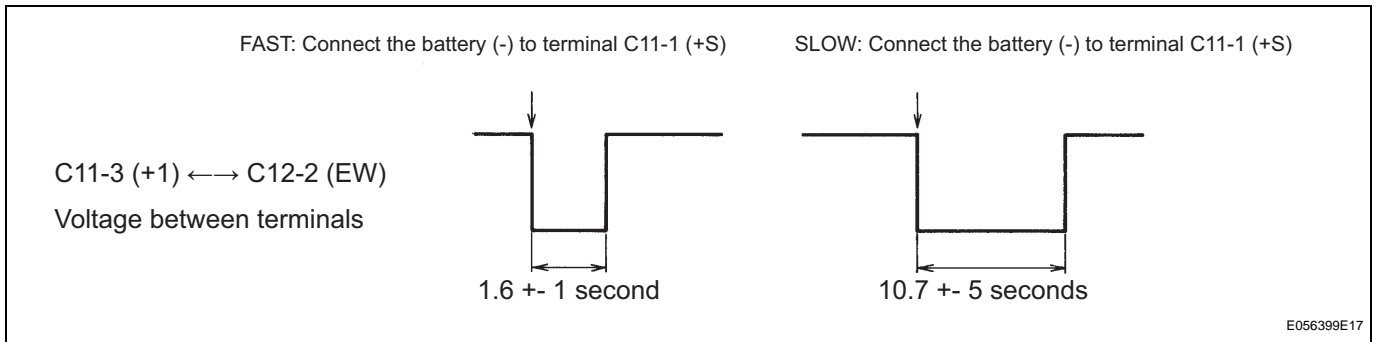
Front Washer Switch

Switch position	Tester connection	Specified resistance
OFF	-	10 kΩ or higher
ON	C12-2 (EW) - C12-3 (WF)	Below 1 Ω

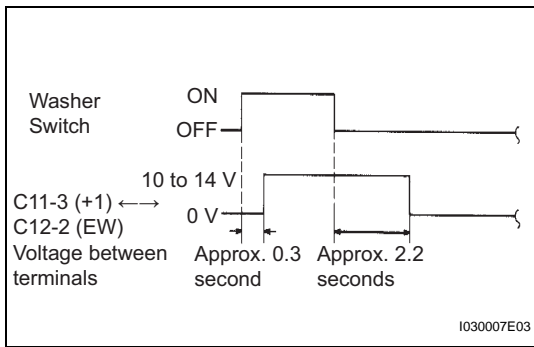
Rear Washer Switch

Switch position	Tester connection	Specified resistance
OFF	-	10 kΩ or higher
ON (Rear wiper switch OFF position side)	C11-5 (WR) - C12-2 (EW)	Below 1 Ω
ON (Rear wiper switch ON position side)	C11-5 (WR) - C12-2 (EW), C12-2 (EW) - C12-7 (+1R)	Below 1 Ω

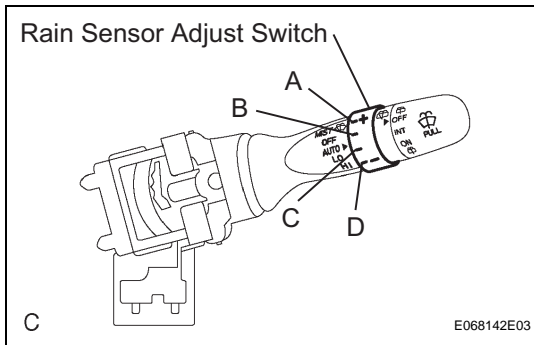
- (b) Intermittent Operation Check (w/o Rain Sensor)
 - (1) Connect the voltmeter (+) terminal to terminal C11-3 (+1) of the connector and the voltmeter (-) terminal to terminal C12-2 (EW).
 - (2) Connect the positive battery (+) lead to terminal C11-2 (+B) of the connector and the negative battery (-) lead to terminals C12-2 (EW) and C11-1 (+S).
 - (3) Turn the wiper switch to the INT position.
 - (4) Connect the positive battery (+) lead to terminal C11-1 (+S) of the connector for 5 seconds.
 - (5) Connect the negative battery (-) lead to terminal C11-4 (+S) of the connector. Operate the intermittent wiper relay and measure the voltage between terminals C11-3 (+1) and C12-2 (EW).



- (c) Front Wiper Operation Check (w/o Rain Sensor)
 - (1) Turn the wiper switch to the OFF position.
 - (2) Connect the positive battery (+) lead to terminal C11-2 (+B) of the connector, and the negative battery (-) to the terminals C11-1 (+S) and C12-2 (EW).



- (3) Connect the voltmeter (+) terminal to terminal C11-3 (+1) of the connector and the voltmeter (-) terminal to terminal C12-2 (EW). Turn the washer switch to the ON and OFF position, and measure the voltage between terminals C11-3 (+1) and C12-2 (EW).



- (d) Rain Sensor Adjust Switch Operation Check (w/ Rain Sensor)

- (1) Measure the resistance according to the value(s) in the table below.

Standard resistance

Tester connection	Condition	Specified condition
C11-7 (VR1) - C11-8 (VR2)	A position	Below 1 Ω
C11-7 (VR1) - C11-8 (VR2)	B position	405 to 493 Ω
C11-7 (VR1) - C11-8 (VR2)	C position	1,400 to 1,700 Ω
C11-7 (VR1) - C11-8 (VR2)	D position	2,200 to 3,200 Ω