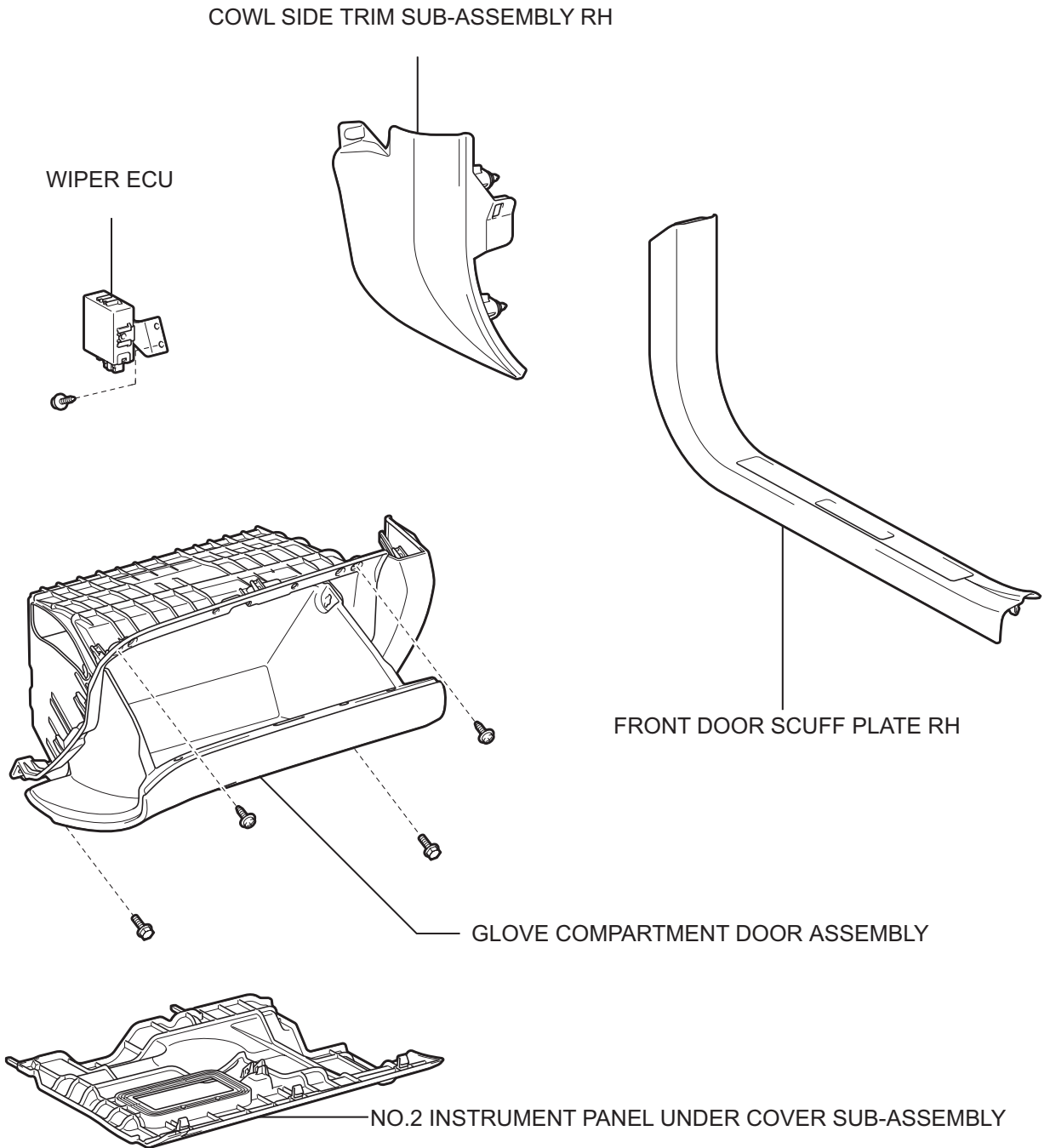
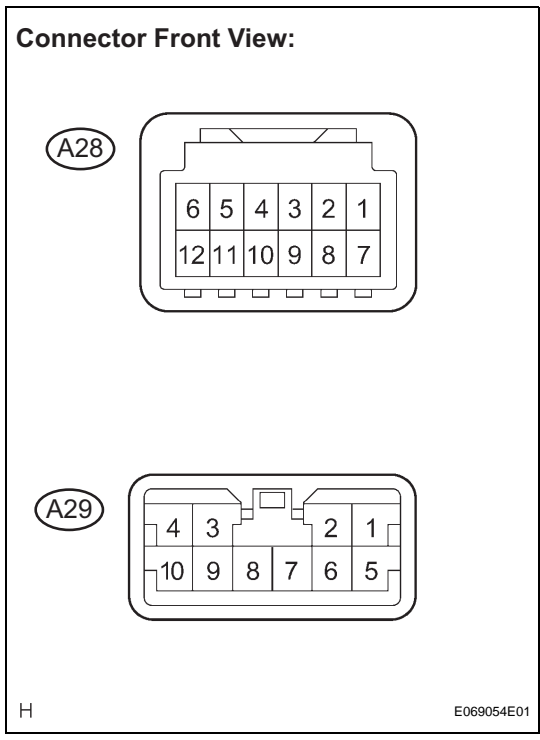


WIPER ECU COMPONENTS



ON-VEHICLE INSPECTION

Connector Front View:



1. INSPECT WIPER ECU

- (a) Measure the voltage according to the value(s) in the table below.

Standard voltage

Tester connection	Condition	Specified voltage
A28-1 (MPX1) - Body ground	Ignition switch OFF → ON	Signal Waveform
A28-3 (VR1) - Body ground	Ignition switch OFF → ON	Below 1 V → 5 V
A28-6 (FWAS) - Body ground	Front washer switch OFF → ON	10 to 14 V → Below 1 V
A28-7 (AUTO) - Body ground	Front washer switch OFF → AUTO	10 to 14 V → Below 1 V
A28-8 (+B)- Body ground	Always	10 to 14 V
A28-9 (VR2) - Body ground	Always	Below 1 V
A28-12 (E) - Body ground	Always	Below 1 V
A29-1 (+1) - Body ground	Front wiper is in LO speed operation (when front wiper switch is in AUTO position)	10 to 14 V
A29-2 (+2) - Body ground	Front wiper is in HI speed operation (when front wiper switch is in AUTO position)	10 to 14 V
A29-5 (+SM) - Body ground	Front wiper motor is OFF → ON	Below 1 V → 10 to 14 V
A29-6 (2S) - Body ground	Front wiper switch OFF → HI	10 to 14 V → Below 1 V
A29-7 (1S) - Body ground	Front wiper switch OFF → LO	10 to 14 V → Below 1 V
A29-8 (ES) - Body ground	Always	Below 1 V
A29-10 (WIG) - Body ground	Ignition switch OFF → ON	Below 1 V → 10 to 14 V