

GROUP 34 REAR SUSPENSION

GENERAL

OUTLINE OF CHANGES

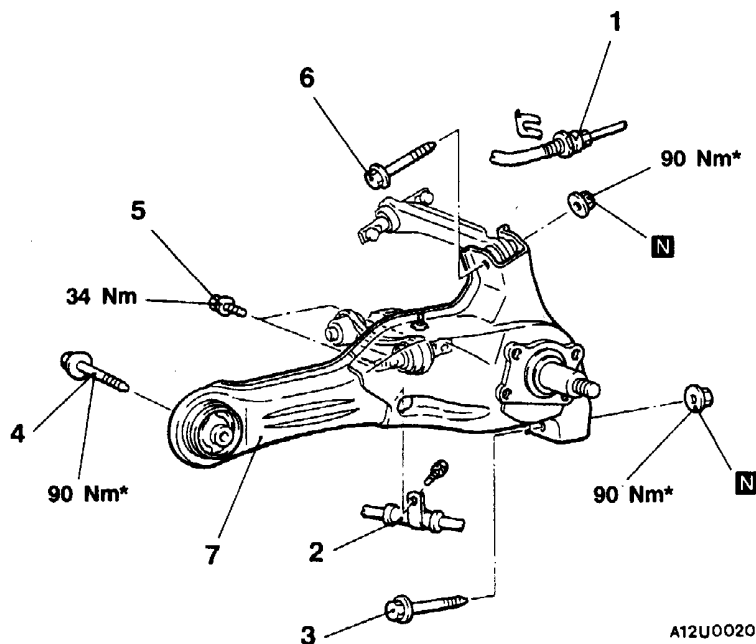
- The service procedures for the trailing arm have been changed to correspond to the change of the rear speed sensors.
Applicable models: Vehicles with ABS

TRAILING ARM

REMOVAL AND INSTALLATION

Pre-removal and Post-installation Operation

- Backing Plate or Disc Brake Adapter Removal and Installation (Refer to GROUP 35B - Rear Drum Brake or Rear Disc Brake.)



A12U0020

Removal steps

- ◀A▶
- Lifting point
1. Brake hose
 2. Parking brake cable
- ◀B▶
3. Lower arm and trailing arm connection
 4. Trailing arm and body connection
 5. Control link and trailing arm connection
 6. Upper link and trailing arm connection
 7. Trailing arm

Caution

- * Indicates parts which should be temporarily tightened, and then fully tightened with the vehicles on the ground in the unladen condition.

NOTE

For each service point, refer to Basic Manual.