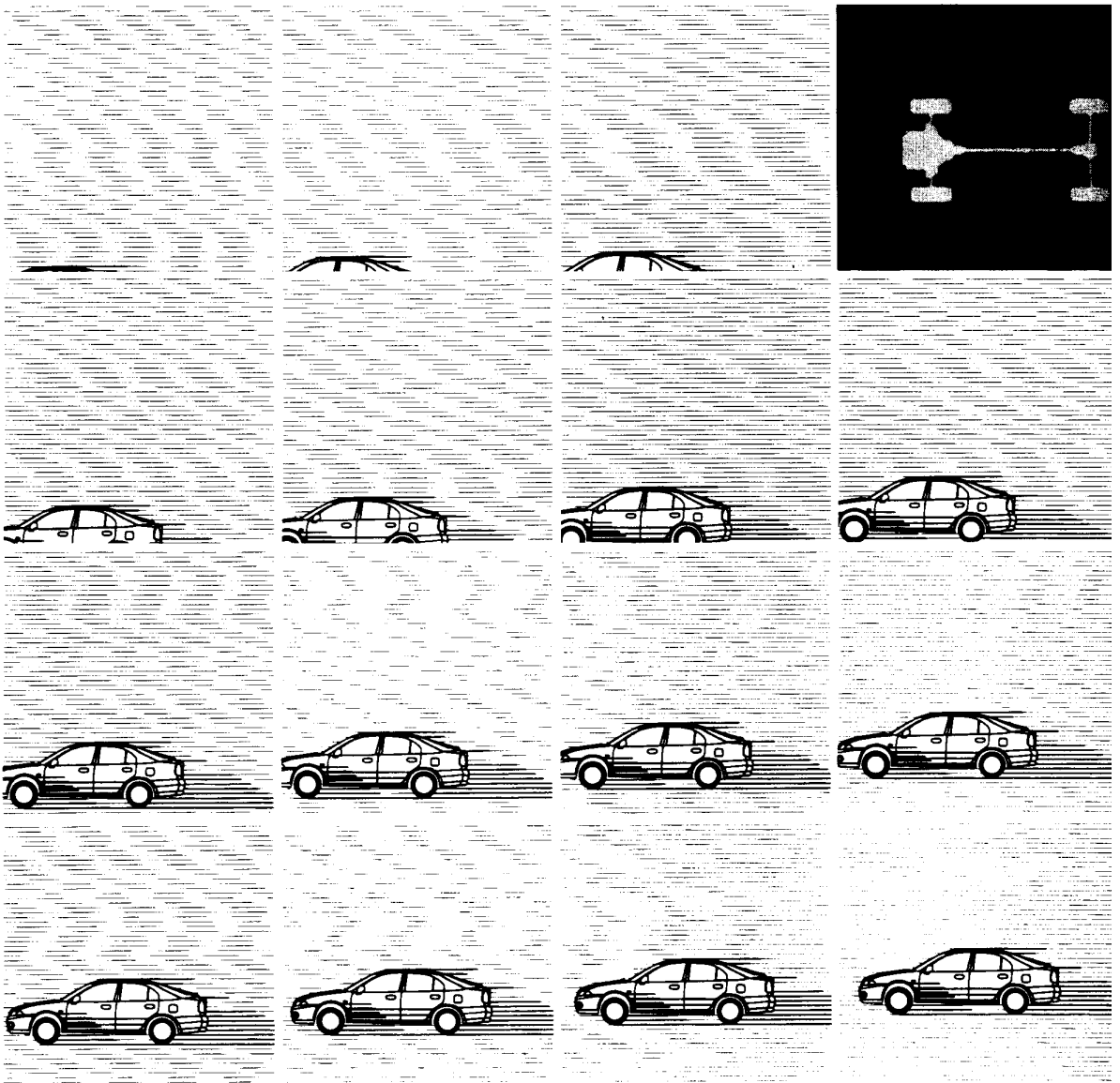




Workshop Manual

chassis SUPPLEMENT

CARISMA '97



Pub. No. PWDE9502-A

CARISMA

WORKSHOP MANUAL SUPPLEMENT

FOREWORD

This manual outlines changes in servicing procedures related to the chassis including vehicle inspections, adjustments and improvements in the newly equipped models. Use the following manuals in combination with this manual as required.

TECHNICAL INFORMATION MANUAL

PYGE95E1
PYGE95E1-A
(Supplement)

WORKSHOP MANUAL ENGINE GROUP

PWEE□□□□
(Looseleaf edition)

CHASSIS GROUP ELECTRICAL WIRING

PWDE9502
PHDE9501
PHDE9501-A
(Supplement)

BODY REPAIR MANUAL

PBGE95E1
PBGE95E1-A
(Supplement)

PARTS CATALOGUE

N606C006D□

General	00
Engine	11
Engine Lubrication	12
Fuel	13
Engine Cooling	14
Intake and Exhaust	15
Engine Electrical	16
Engine and Emission Control	17
Manual Transmission	22
Front Axle	26
Rear Axle	27
Power Plant Mount	32
Rear Suspension	34
Service Brakes	35
Steering	37
Body	42
Exterior	51
Interior and Supplemental Restrain System (SRS)	52
Chassis Electrical	54
Heater, Air Conditioner and Ventilation	55

All information, illustrations and product descriptions contained in this manual are current as at the time of publication. We, however, reserve the right to make changes at any time without prior notice or obligation.

 **MITSUBISHI MOTOR SALES**
Europe B.V.