
ENGINE COOLING

CONTENTS

1410900031

GENERAL INFORMATION	2	Engine Coolant Replacement	3
SERVICE SPECIFICATIONS	2	Concentration Measurement	4
LUBRICANT	2	THERMOSTAT	5
SEALANTS	2	WATER PUMP	
ON-VEHICLE SERVICE	3	<SOHC>	7
Engine Coolant Leak Checking	3	<DOHC>	8
Radiator Cap Valve Opening Pressure Check ..	3	WATER HOSE AND WATER PIPE	9
		RADIATOR	11

GENERAL INFORMATION

14100010033

The cooling system is designed to keep every part of the engine at appropriate temperature in whatever condition the engine may be operated. The cooling method is of the water-cooled, pressure forced circulation type in which the water pump pressurizes coolant and circulates it throughout the engine. If the coolant temperature exceeds the prescribed temperature, the thermostat opens to circulate the coolant through the radiator as well so that the heat absorbed by the coolant may be radiated into the air.

The water pump is of the centrifugal type and is driven by the timing belt or drive belt from the crankshaft.

The radiator is the corrugated fin, down flow type and is cooled by the electrical radiator fan.

The electrical radiator fan is controlled by the engine ECU in accordance with the engine running condition.

Items		Specifications
Radiator	Performance kJ/h	168,120
Automatic transmission oil cooler	Performance kJ/h	6,195

SERVICE SPECIFICATIONS

14100030039

Items		Standard value	Limit
High pressure valve opening pressure of radiator cap kPa		75–105	65
Range of coolant antifreeze concentration of radiator %		30–60	–
Thermostat	Valve opening temperature of thermostat °C	82±1.5	–
	Full-opening temperature of thermostat °C	95	–
Valve lift (at 95°C) mm		8 or more	–

LUBRICANT

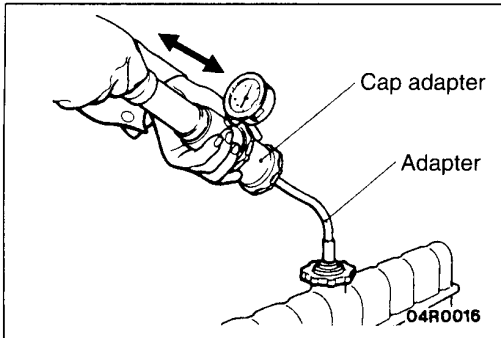
14100040032

Items	Quantity ℓ
HIGH QUALITY ETHYLENE GLYCOL ANTIFREEZE COOLANT	6

SEALANTS

14100050035

Items	Specified sealant	Remarks
Cylinder block drain plug	3M Nut Locking Part No. 4171 or equivalent	Drying sealant
Water pump, Thermostat case	Mitsubishi Genuine Parts No. MD970389 or equivalent	Semi-Drying sealant



ON-VEHICLE SERVICE

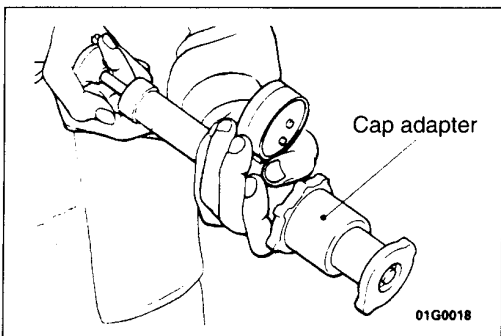
14100100037

ENGINE COOLANT LEAK CHECKING

1. Confirm that the coolant level is up to the filler neck. Install a radiator cap tester and apply 160 kPa pressure, and then check for leakage from the radiator hose or connections.

Caution

1. Be sure to completely clean away any moisture from the places checked.
 2. When the tester is taken out, be careful not to spill any coolant from it.
 3. Be careful, when installing and removing the tester and when testing, not to deform the filler neck of the radiator.
2. If there is leakage, repair or replace the appropriate part.



RADIATOR CAP VALVE OPENING PRESSURE CHECK

14100130036

1. Use a cap adapter to attach the cap to the tester.
2. Increase the pressure until the indicator of the gauge stops moving.

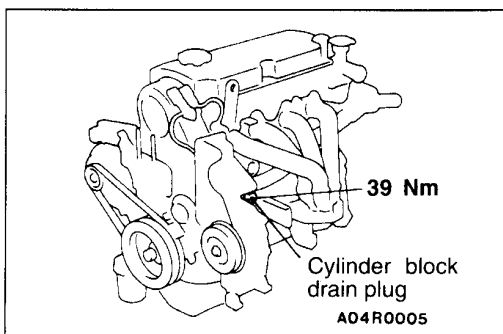
Limit: 65 kPa

Standard value: 75–105 kPa

3. Replace the radiator cap if the reading does not remain at or above the limit.

NOTE

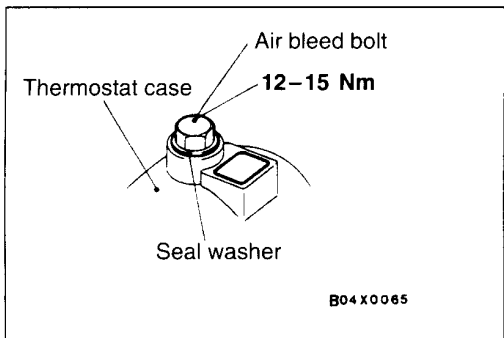
Be sure that the cap is clean before testing, since rust or other foreign material on the cap seal will cause an improper indication.



ENGINE COOLANT REPLACEMENT

14100120033

1. Drain the engine coolant by removing the drain plug and then the radiator cap.
2. Remove the drain plug from the cylinder block to drain the engine coolant.
3. Remove the reserve tank to drain the engine coolant.
4. When the engine coolant has drained, pour in water from the radiator cap to clean the engine coolant line.



5. Coat the thread of the cylinder block drain plug with the specified sealant and tighten to the specified torque.

Specified sealant: 3M Nut Locking Part No. 4171 or equivalent

6. Securely tighten the radiator drain plug.
7. Install the reserve tank.
8. Remove the air bleed bolt and replace the seal washer.
9. Fill the radiator until the engine coolant flows from the air bleed bolt section, and then close the air bleed bolt.
10. Slowly pour the engine coolant into the mouth of the radiator until the radiator is full, and pour also into the reserve tank up to the FULL line.

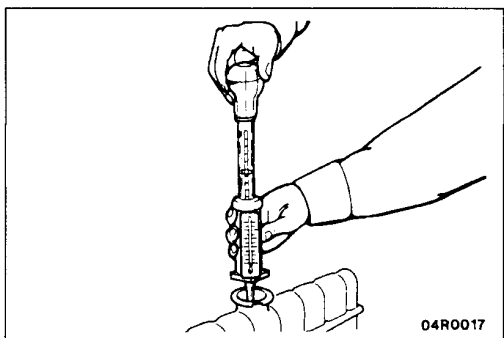
**Recommended antifreeze:
HIGH QUALITY ETHYLENE GLYCOL ANTIFREEZE COOLANT**

Quantity: 6 l

NOTE

For Norway, the non-amine type of antifreeze should be used.

11. Install the radiator cap securely.
12. Start the engine and warm the engine until the thermostat opens. (Touch the radiator hose with your hand to check that warm water is flowing.)
13. After the thermostat opens, race the engine several times, and then stop the engine.
14. Cool down the engine, and then pour engine coolant into the reserve tank until the level reaches the FULL line. If the level is low, repeat the operation from step 11.



CONCENTRATION MEASUREMENT

14100110030

Measure the temperature and specific gravity of the engine coolant to check the antifreeze concentration.

Standard value: 30–60% (allowable concentration range)

RECOMMENDED ANTIFREEZE

Antifreeze	Allowable concentration
HIGH QUALITY ETHYLENE GLYCOL ANTIFREEZE COOLANT	30–60%

Caution

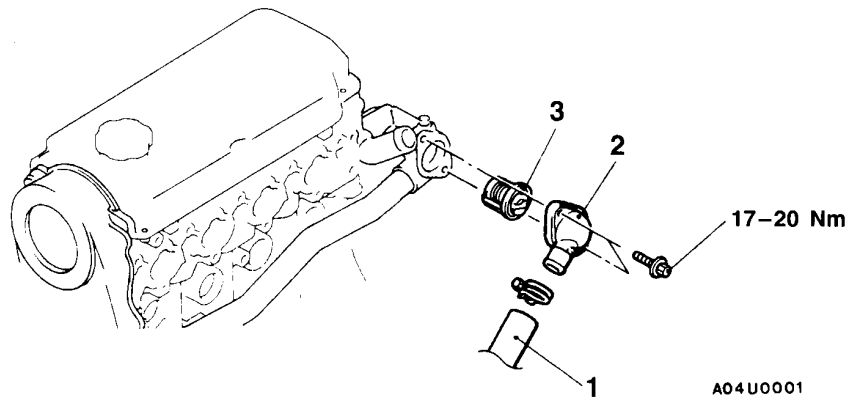
If the concentration of the antifreeze is below 30%, the anti-corrosion property will be adversely affected. In addition, if the concentration is above 60%, both the anti-freezing and engine cooling properties will decrease, affecting the engine adversely. For these reasons, be sure to maintain the concentration level within the specified range.

THERMOSTAT

14100240036

REMOVAL AND INSTALLATION**Pre-removal and Post-installation Operation**

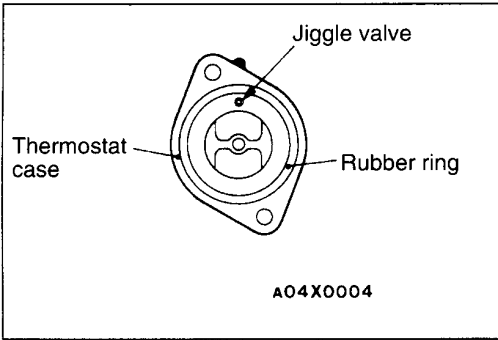
- Engine Coolant Draining and Supplying
(Refer to P.14-3.)

**Removal steps**

- ◀A▶ ▶B▶ 1. Radiator lower hose connection
▶A▶ 2. Water inlet fitting
▶A▶ 3. Thermostat

REMOVAL SERVICE POINT**◀A▶ RADIATOR LOWER HOSE DISCONNECTION**

After making mating marks on the radiator hose and the hose clamp, disconnect the radiator hose.



INSTALLATION SERVICE POINTS

►A◄ THERMOSTAT INSTALLATION

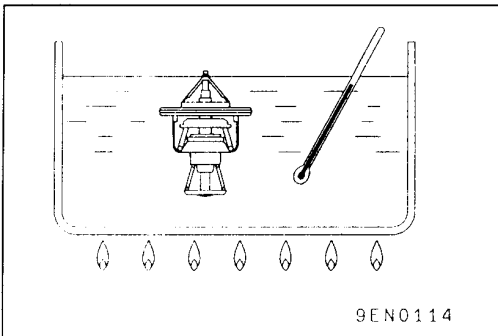
Install the thermostat so that the jiggle valve is facing straight up.

Caution

Make absolutely sure that no oil is adhering to the rubber ring of the thermostat. In addition, be careful not to fold over or scratch the rubber ring when inserting.

►B◄ RADIATOR LOWER HOSE CONNECTION

1. Insert each hose as far as the projection of the water inlet fitting.
2. Align the mating marks on the radiator hose and hose clamp, and then connect the radiator hose.



INSPECTION

14100250046

THERMOSTAT CHECK

1. Immerse the thermostat in water, and heat the water while stirring. Check the thermostat valve opening temperature.

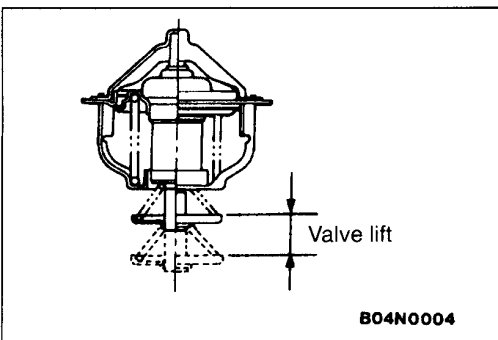
Standard value:

Valve opening temperature: 82±1.5°C

2. Check that the amount of valve lift is at the standard value when the water is at the full-opening temperature.

Standard value

Full-opening temperature °C	Amount of valve lift mm
95	8 or more



NOTE

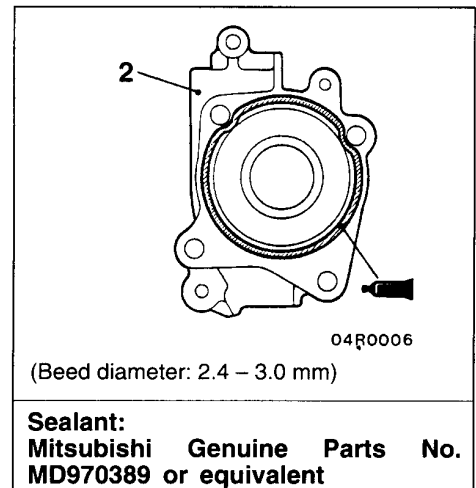
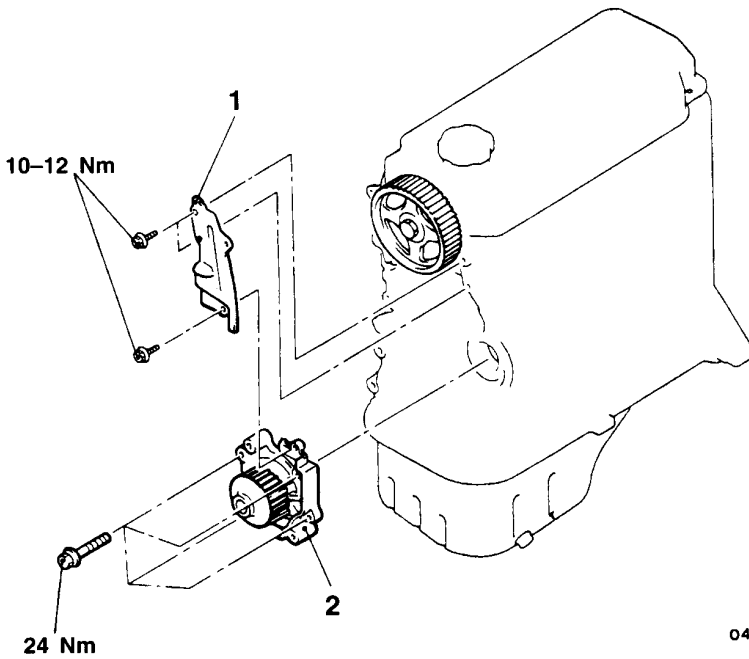
Measure the valve height when the thermostat is fully closed, and use this measurement to calculate the valve height when the thermostat is fully open.

WATER PUMP <SOHC>

14100270073

REMOVAL AND INSTALLATION

Pre-removal and Post-installation Operation
 (1) Engine Coolant Draining and Supplying
 (Refer to P.14-3.)
 (2) Timing Belt Removal and Installation
 (Refer to GROUP 11A.)



Removal steps

- ▶A◀ 1. Timing belt rear cover
- ▶A◀ 2. Water pump

INSTALLATION SERVICE POINT

▶A◀ WATER PUMP INSTALLATION

Squeeze out the sealant from the tube evenly and apply it so that there is not too much sealant and no places without sealant.

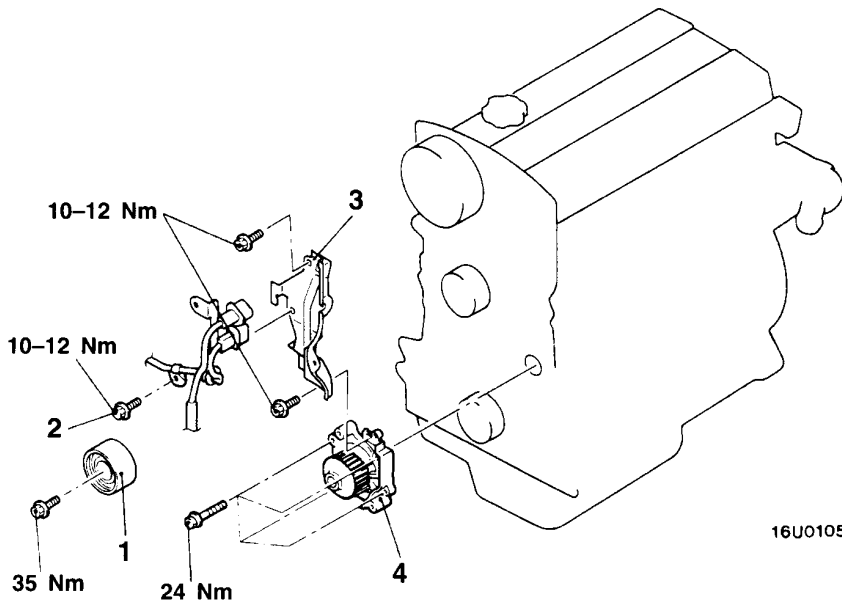
Specified Sealant: Mitsubishi Genuine Parts No. MD970389 or equivalent

WATER PUMP <DOHC>

14100270080

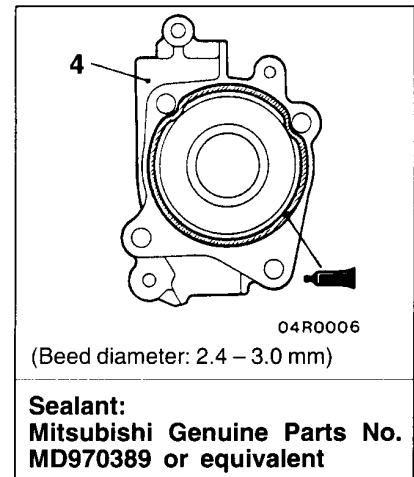
REMOVAL AND INSTALLATION**Pre-removal and Post-Installation Operation**

- (1) Engine Coolant Draining and Supplying
(Refer to P.14-3.)
- (2) Exhaust Camshaft Sprocket Removal and Installation (Refer to GROUP 11A – Camshaft and Camshaft Oil seal.)



16U0105

00003352

**Removal steps**

1. Idler pulley
2. Camshaft position sensor clamp bolt
3. Timing belt rear cover
- ▶◀ 4. Water pump

INSTALLATION SERVICE POINT**▶◀ WATER PUMP INSTALLATION**

Squeeze out the sealant from the tube evenly and apply it so that there is not too much sealant and no places without sealant.

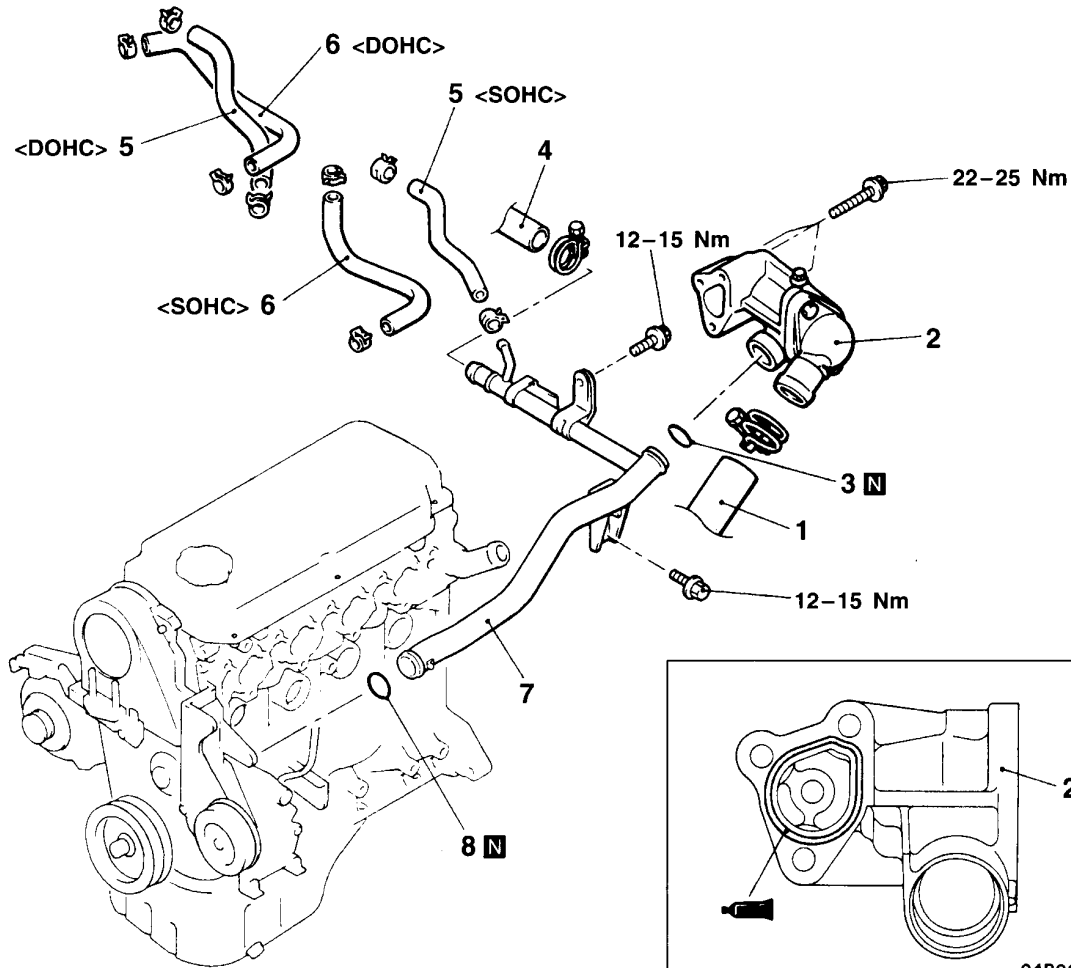
Specified Sealant: Mitsubishi Genuine Parts No. MD970389 or equivalent

WATER HOSE AND WATER PIPE

14100330078

REMOVAL AND INSTALLATION

- Pre-removal and Post-Installation Operation**
- (1) Engine Coolant Draining and Supplying
(Refer to P.14-3.)
 - (2) Air Cleaner, Air Intake Hose Removal and Installation
 - (3) Distributor Removal and Installation <SOHC>
(Refer to GROUP 16.)



(Beed diameter: 2.4 – 3.0 mm) 04R0011

Sealant:
Mitsubishi Genuine Parts No.
MD970389 or equivalent

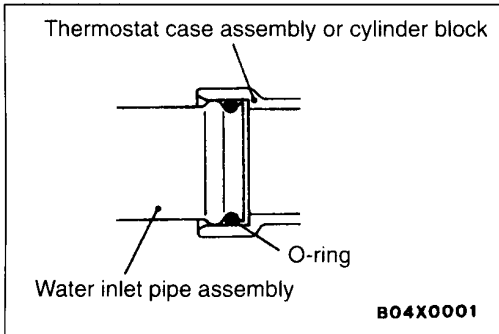
04U0002
00003353

Removal steps

- ◀A▶ C▶ 1. Radiator lower hose connection
- ▶B▶ 2. Thermostat case assembly
- ▶A▶ 3. O-ring
- 4. Heater hose connection
- 5. Water hose
- 6. Water hose
- 7. Water inlet pipe assembly
- ▶A▶ 8. O-ring

REMOVAL SERVICE POINT**◀A▶ RADIATOR LOWER HOSE DISCONNECTION**

After making mating marks on the radiator hose and the hose clamp, disconnect the radiator hose.

**INSTALLATION SERVICE POINTS****▶A◀ O-RING INSTALLATION**

Insert the O-ring to the water inlet pipe assembly, and coat the outer circumference of the O-ring with water or engine coolant.

Caution

Do not allow engine oil or other greases to adhere to the O-ring

▶B◀ THERMOSTAT CASE ASSEMBLY INSTALLATION

Squeeze out the sealant from the tube evenly and apply it so that there is not too much sealant and no places without sealant.

Specified Sealant: Mitsubishi Genuine Parts No. MD970389 or equivalent

▶C◀ RADIATOR LOWER HOSE CONNECTION

1. Insert each hose as far as the projection of the water inlet fitting.
2. Align the mating marks on the radiator hose and hose clamp, and then connect the radiator hose.

INSPECTION

14100340064

WATER PIPE AND HOSE CHECK

Check the water pipe and hose for cracks, damage, clog and replace them if necessary.

RADIATOR

14100150032

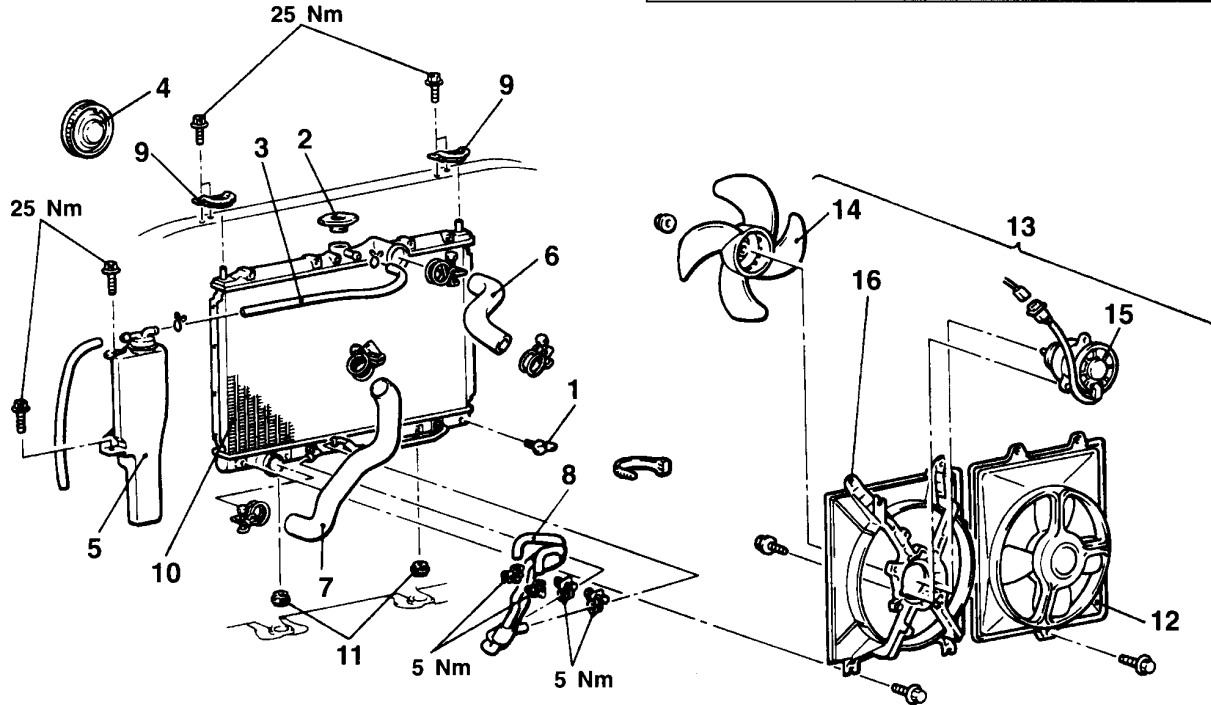
REMOVAL AND INSTALLATION

Pre-removal Operation

- Engine Coolant Draining (Refer to P.14-3.)

Post-installation Operation

- (1) Engine Coolant Supplying (Refer to P.14-3.)
- (2) A/T Fluid Supplying and Checking (Refer to GROUP 23 – On-vehicle Service.)



A04U0004

Radiator removal steps

1. Drain plug
2. Radiator cap
3. Overflow hose
4. Headlamp cap
5. Reserve tank
6. Radiator upper hose
7. Radiator lower hose
8. Transmission fluid cooler hose
9. Upper insulator
10. Radiator assembly
11. Lower insulator



12. Condenser fan motor assembly <Vehicles with A/C>
13. Radiator fan motor assembly
14. Fan
15. Radiator fan motor
16. Shroud

Radiator fan motor removal steps

4. Headlamp cap
5. Reserve tank
13. Radiator fan motor assembly
14. Fan
15. Radiator fan motor
16. Shroud

REMOVAL SERVICE POINT

◀A▶ RADIATOR UPPER HOSE/RADIATOR LOWER HOSE DISCONNECTION

After making mating marks on the radiator hose and the hose clamp, disconnect the radiator hose.

◀B▶ TRANSMISSION FLUID COOLER HOSE REMOVAL

After removing the hose from the radiator, plug the hose and the radiator nipple to prevent dust or foreign particles from getting in.

INSTALLATION SERVICE POINT

▶A◀ RADIATOR LOWER HOSE / RADIATOR UPPER HOSE CONNECTION

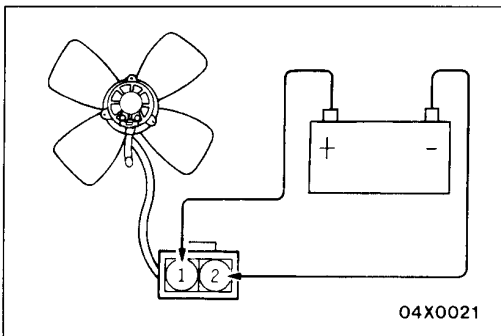
1. Insert each hose as far as the projection of the water inlet fitting.
2. Align the mating marks on the radiator hose and hose clamp, and then connect the radiator hose.

INSPECTION

14100190034

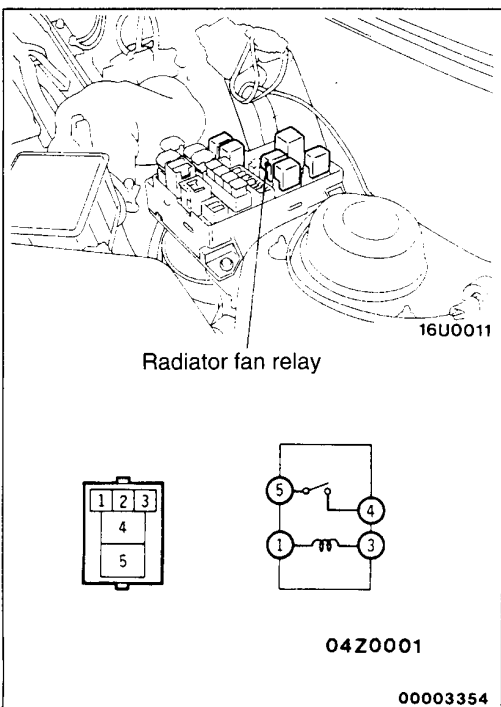
RADIATOR FAN MOTOR CHECK

1. Check to be sure that the radiator fan rotates when battery voltage is applied between terminals (as shown in the figure).
2. Check to see that abnormal noises are not produced, while motor is turning.



RADIATOR FAN RELAY CONTINUITY CHECK

14100440030



Battery voltage	Terminal No.			
	1	3	4	5
Not supplied	○	○		
Supplied	⊕	⊖	○	○