
CLUTCH

CONTENTS

2110900039

GENERAL INFORMATION	2	CLUTCH PEDAL	4
SERVICE SPECIFICATIONS	2	CLUTCH CONTROL	5
LUBRICANTS	2	Clutch Master Cylinder	6
ON-VEHICLE SERVICE	2		
Clutch Pedal Inspection and Adjustment	2		
Bleeding	3		



CLUTCH

21100010031

GENERAL INFORMATION

The clutch is a dry single-disc, diaphragm type; hydraulic pressure is used for the clutch control.

SERVICE SPECIFICATIONS

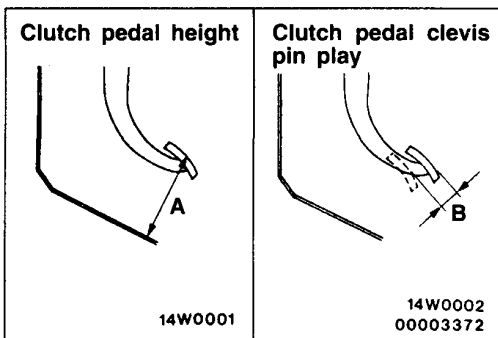
21100030037

Items	Standard value
Clutch pedal height mm	163.5–166.5 (L.H. drive vehicles) 162.5–165.5 (R.H. drive vehicles)
Clutch pedal free play mm	6–13
Clutch pedal clevis pin play mm	1–3
Distance between the clutch pedal and the toeboard when the clutch is disengaged mm	85

LUBRICANTS

21100040023

Items	Specified lubricants	Quantity
Clutch fluid	Brake fluid DOT 3 or DOT 4	As required
Push rod assembly	Rubber grease	
Boot		
Release cylinder push rod	MITSUBISHI genuine grease Part No. 0101011	



ON-VEHICLE SERVICE

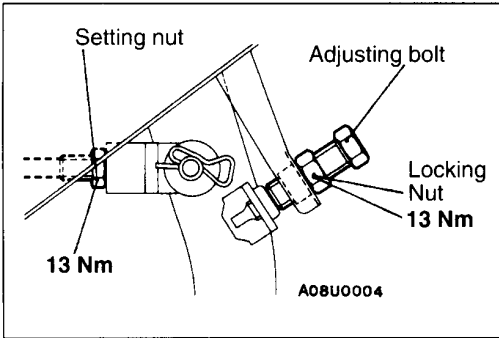
21100090035

CLUTCH PEDAL INSPECTION AND ADJUSTMENT

1. Measure the clutch pedal height and the clutch pedal clevis pin play.

**Standard value (A): 163.5–166.5 <L.H. drive vehicles>
 162.5–165.5 <R.H. drive vehicles>**

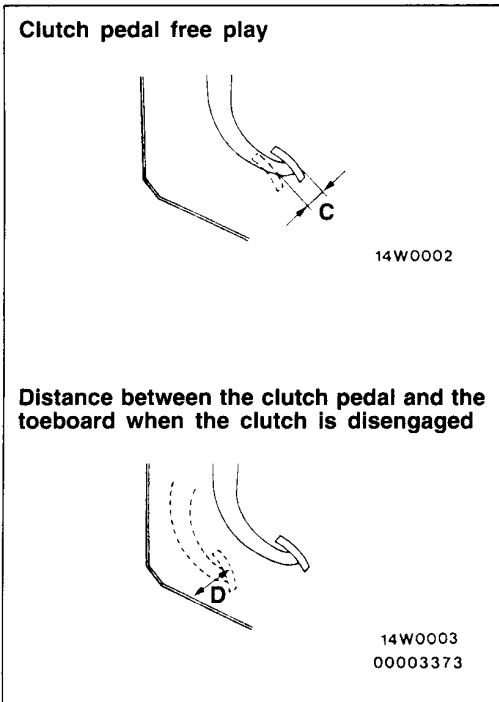
Standard value (B): 1–3 mm



2. If the height of the clutch pedal is outside the standard value, loosen the lock nut and adjust the pedal height to the standard value using the adjusting bolt or push rod.
3. If the clutch pedal play is not within the standard value, loosen the locking nut and move the push rod to adjust.

Caution

Do not push in the master cylinder push rod at this time.

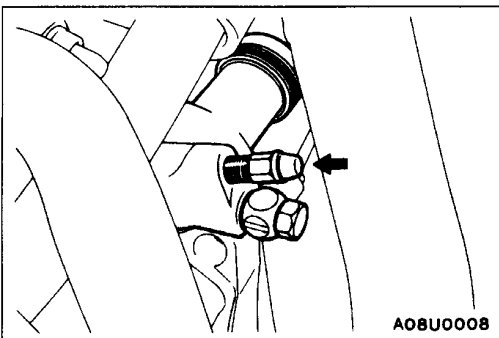


4. After completing the adjustments, confirm that the clutch pedal free play (measured at the face of the pedal pad) and the distance between the clutch pedal (the face of the pedal pad) and the toeboard when the clutch is disengaged are within the standard value ranges.

Standard value (C): 6–13 mm

Standard value (D): 85 mm

5. If the clutch pedal free play and the distance between the clutch pedal and the toeboard when the clutch is disengaged do not agree with the standard values, it is probably the result of either air in the hydraulic system or a faulty master cylinder or clutch. Bleed the air, or disassembly and inspect the master cylinder or clutch.



BLEEDING

21100140037

Specified brake fluid: DOT 3 or DOT 4

Caution

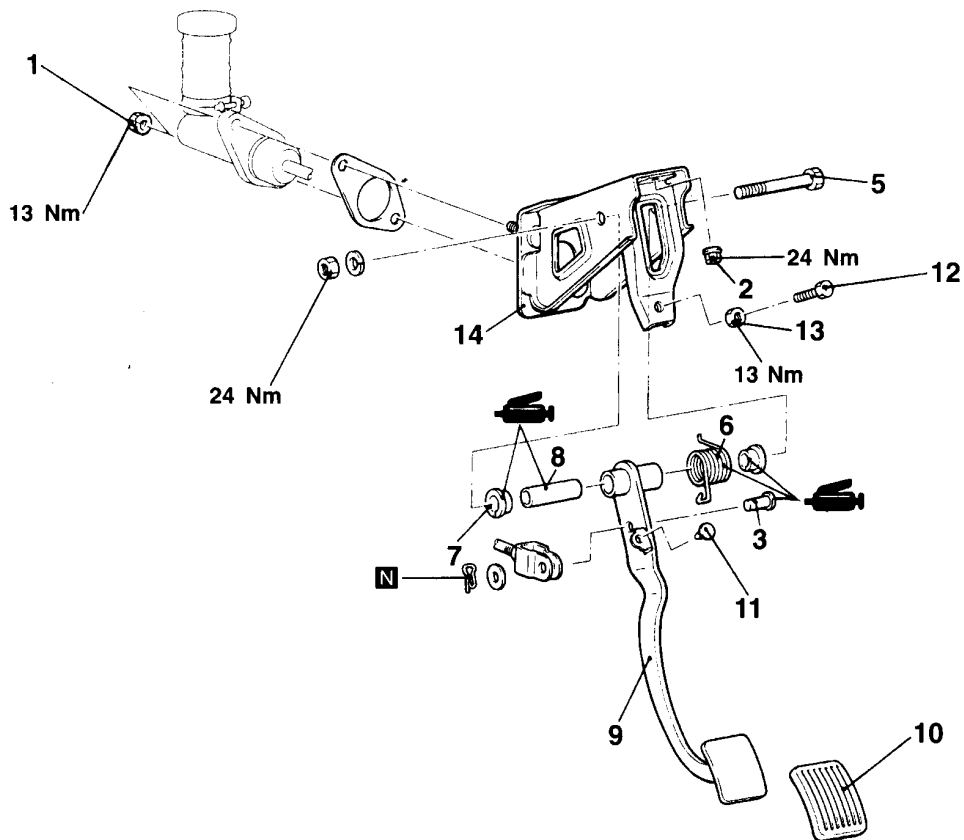
Use the specified brake fluid. Avoid using a mixture of the specified fluid and other fluid.

CLUTCH PEDAL

21100160033

REMOVAL AND INSTALLATION**Post-installation Operation**

- Clutch Pedal Adjustment (Refer to P.21-2.)



A08U0003

Removal steps

1. Clutch master cylinder installation nut
2. Master cylinder member installation nut
3. Clevis pin
4. Pedal support member and clutch pedal assembly
5. Bolt
6. Clutch pedal return spring
7. Clutch pedal bushing
8. Pipe
9. Clutch pedal
10. Pedal pad
11. Stopper
12. Adjusting Bolt
13. Lock nut
14. Master cylinder member assembly

CLUTCH CONTROL

21100190032

REMOVAL AND INSTALLATION

Pre-removal Operation

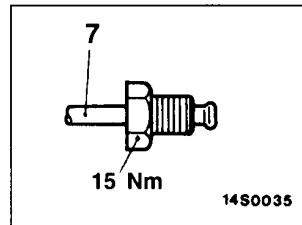
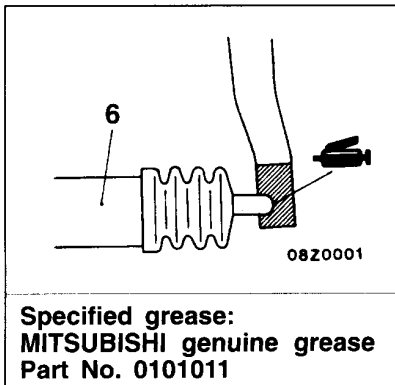
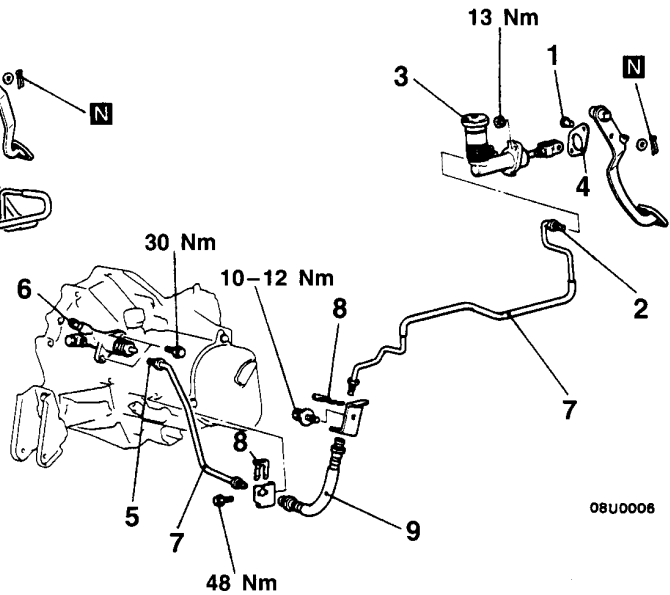
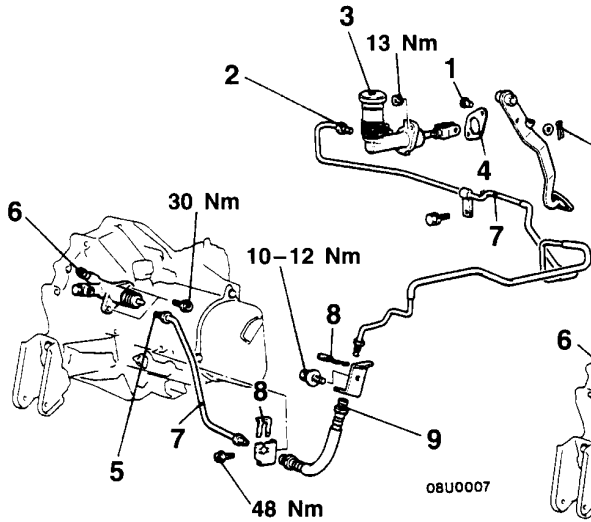
- Clutch Fluid Draining

Post-installation Operation

1. Clutch Fluid Supplying
2. Clutch Line Bleeding (Refer to P.21-3.)
3. Clutch pedal adjustment (Refer to P.21-2.)

<L.H. drive vehicles>

<R.H. drive vehicles>



00003379

Clutch master cylinder removal steps

1. Clevis pin
2. Clutch pipe connection
3. Clutch master cylinder
4. Sealer

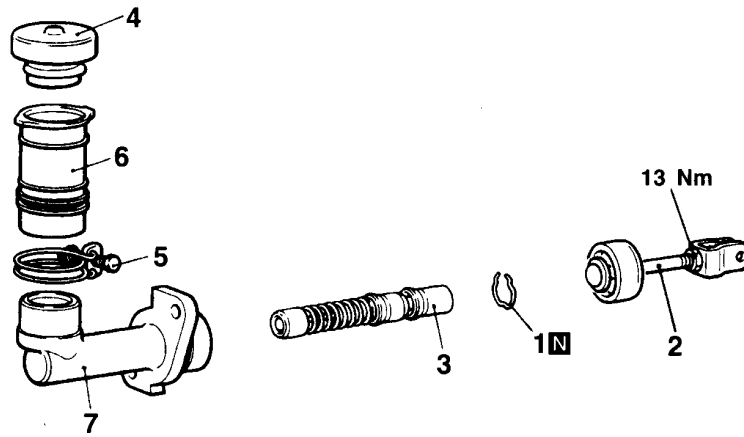
Clutch release cylinder removal steps

5. Clutch pipe connection
6. Clutch release cylinder

Clutch line removal steps

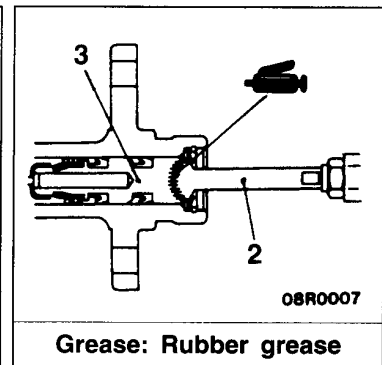
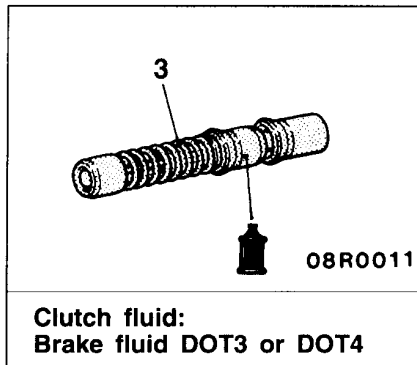
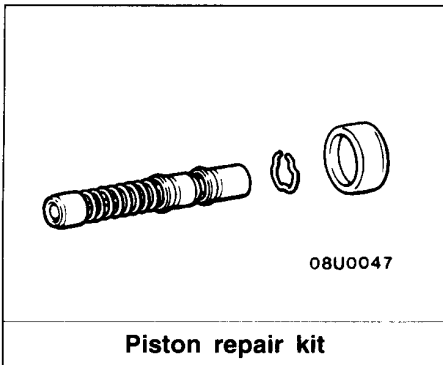
7. Clutch pipe
8. Hose clip
9. Clutch hose

**DISASSEMBLY AND REASSEMBLY
CLUTCH MASTER CYLINDER**



08U0005

00003360



Disassembly steps

1. Piston stopper ring
2. Push rod assembly
3. Piston assembly
4. Reservoir cap
5. Reservoir band
6. Reservoir tank
7. Clutch master cylinder body

Caution
Do not disassemble piston assembly.