

GROUP 22

MANUAL TRANSMISSION

GENERAL

OUTLINE OF CHANGES

The service procedures have been revised due to the following changes:

- The double-cone synchronizer mechanism has been used for the 1st-speed gear in addition to the 2nd-speed gear <F5M42>.
- The final reduction ratio has been changed from 3.722 to 4.058 <F5M42>.
- The shift lever assembly has been changed.

TRANSMISSION CONTROL <F5MR1, F5MR3>

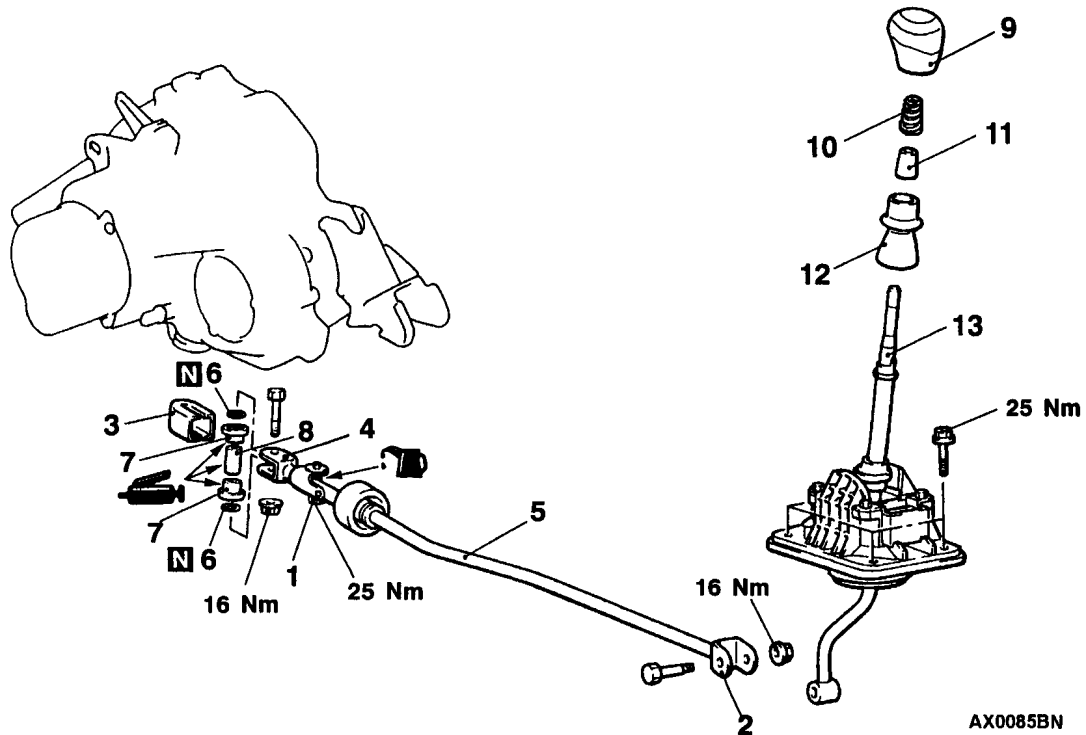
REMOVAL AND INSTALLATION

Caution: SRS

Be careful not to subject the SRS-ECU to any shocks during removal and installation of the shift lever assembly and shift rod assembly.

Post-installation Operation

- Reverse Mis-operation Prevention Function Check
- Shift Lever Operation Check



Shift rod assembly removal steps

1. Shift rod adjusting bolt
2. Shift rod assembly connection (Shift lever side)
3. Shift rod cap
4. Shift rod assembly connection (Transmission side)
5. Shift rod assembly
6. O-ring
7. Shift rod bushing
8. Collar



Shift lever assembly removal steps

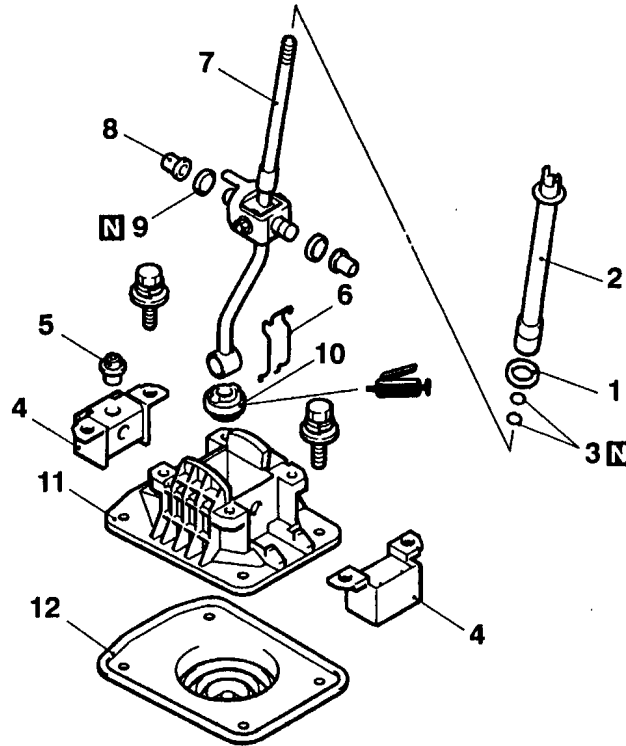
2. Shift rod assembly connection (Shift lever side)
9. Shift knob
10. Spring
11. Foam
12. Locking knob
 - Front floor console assembly (Refer to GROUP 52A.)
13. Shift lever assembly

REMOVAL SERVICE POINT

◀A▶ SHIFT ROD ASSEMBLY DISCONNECTION

Suspend the shift rod assembly from the vehicle with wire.

**SHIFT LEVER ASSEMBLY
DISASSEMBLY AND REASSEMBLY**



BW0244AJ

Disassembly steps

- | | |
|---|---|
| <ul style="list-style-type: none"> 1. Stopper rubber A 2. Locking tube 3. O-ring 4. Insulator 5. Detent assembly 6. Steel rod | <ul style="list-style-type: none"> 7. Shift lever assembly 8. Shift bushing 9. O-ring 10. Lower stopper assembly 11. Base assembly 12. Dust cover |
|---|---|

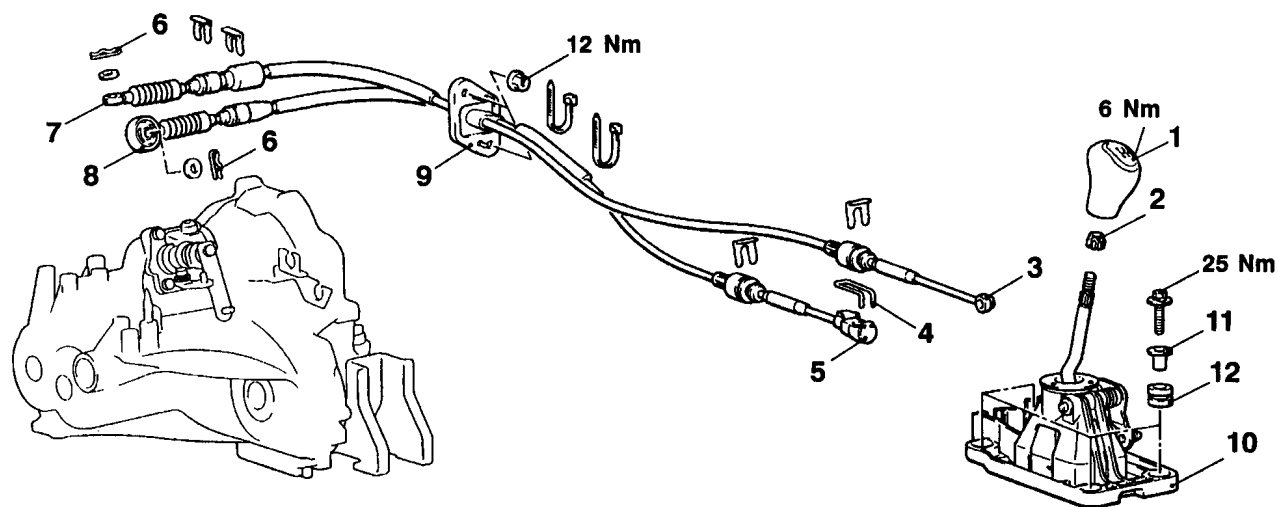
TRANSMISSION CONTROL <F5M42>

REMOVAL AND INSTALLATION

Caution: SRS

Be careful not to subject the SRS-ECU to any shocks during removal and installation of the shift lever assembly, shift cable and select cable assembly.

Pre-removal and Post-Installation Operation
Shift Lever Operation Check



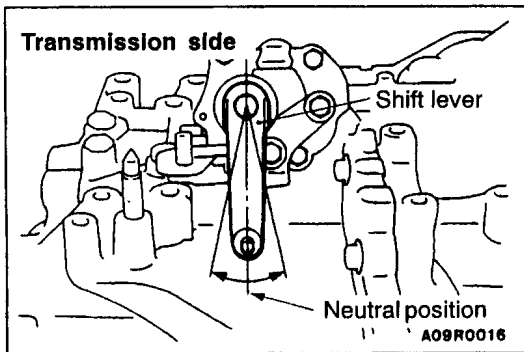
AX0086BN

Shift cable and select cable assembly removal steps

- Air cleaner assembly
- 1. Shift knob
- 2. Sleeve
- Front floor console assembly (Refer to GROUP 52A)
- 3. Select cable connection (passenger compartment side)
- 4. Clip
- 5. Shift cable connection (passenger compartment side)
- 6. Snap pin
- ▶A◀ 7. Select cable connection (Transmission side)
- ▶A◀ 8. Shift cable connection (Transmission side)
- ▶A◀ 9. Shift cable and select cable assembly

Shift lever assembly removal steps

- 1. Shift knob
- 2. Sleeve
- Front floor console assembly (Refer to GROUP 52A)
- 3. Select cable connection (passenger compartment side)
- 4. Clip
- 5. Shift cable connection (passenger compartment side)
- 10. Shift lever assembly
- 11. Distance piece
- 12. Bushing



INSTALLATION SERVICE POINT

▶A◀ SHIFT CABLE AND SELECT CABLE ASSEMBLY/ SHIFT CABLE CONNECTION/SELECT CABLE CONNECTION

1. Set the transmission side shift lever and the passenger compartment side shift lever to the neutral position.
2. For the transmission side, face the white and yellow paint marks on the shift and select cable ends to the snap pins, and install the cables.
3. Move the shift lever to all positions and check that the operation is smooth.