

GROUP 26

FRONT AXLE

GENERAL

OUTLINE OF CHANGES

- The service procedures have been established due to the change on the axle hub and the drive shaft.
 - (1) Axle hub removal and installation
 - (2) Drive shaft removal and installation
 - (3) Drive shaft disassembly and reassembly

AXLE HUB

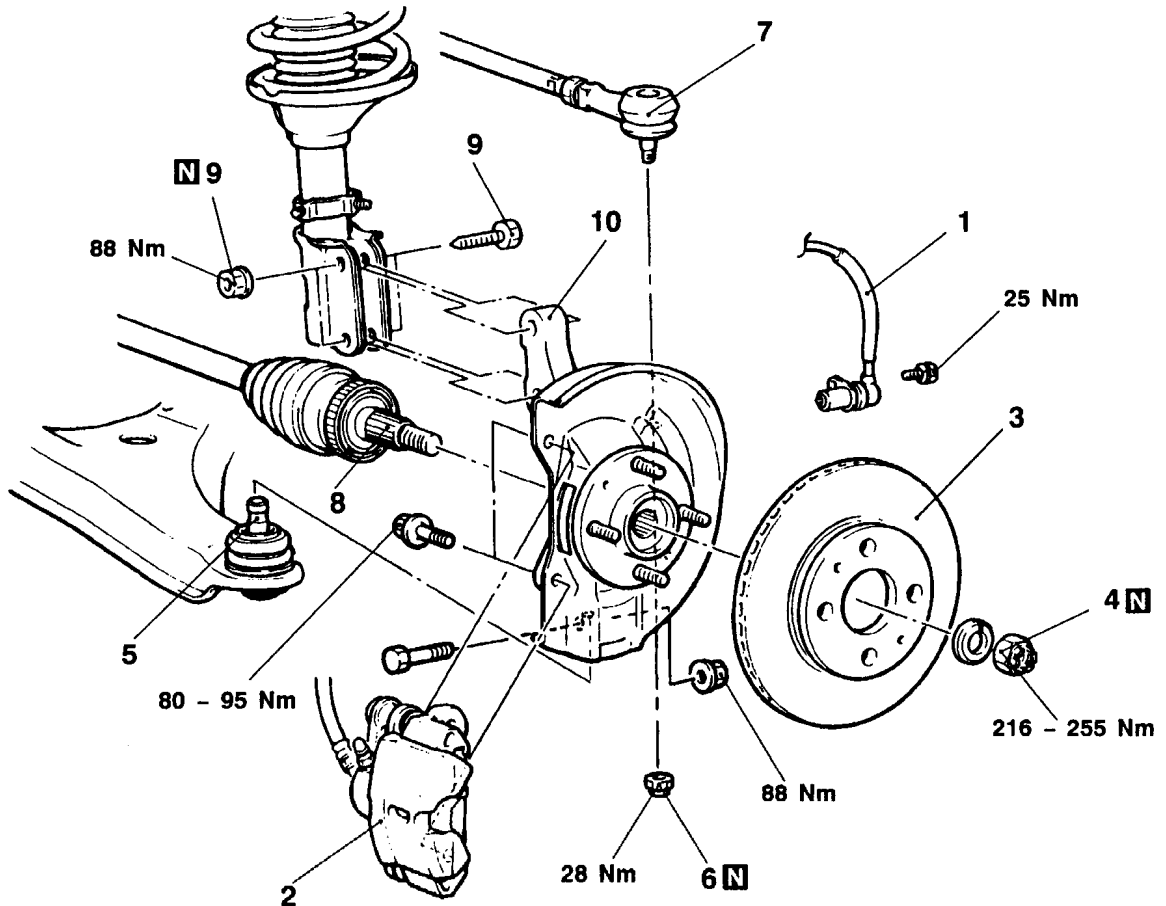
REMOVAL AND INSTALLATION

Caution

1. Do not strike the speed sensor against other parts when removing or installing it. Otherwise the speed sensor will be damaged.
2. Do not strike the ABS rotors installed to the B.J. outer race of drive shaft against other parts when removing or installing the drive shaft. Otherwise the ABS rotors will be damaged.

Post-installation Operation

- Press the dust cover with a finger to check whether the dust cover is cracked or damaged.
- Wheel Alignment Check and Adjustment.
(Refer to GROUP 33A – On-vehicle Service.)



AX0016BN

Removal steps

- | | | |
|--------------------------------------|---|--|
| <p>◀A▶</p> <p>◀B▶ ▶A◀</p> <p>◀C▶</p> | <ol style="list-style-type: none"> 1. Front speed sensor 2. Caliper assembly 3. Brake disc 4. Drive shaft nut 5. Connection for lower arm ball joint 6. Self-locking nut 7. Connection for tie rod end | <p>◀D▶</p> <ol style="list-style-type: none"> 8. Drive shaft 9. Front strut mounting bolt and nut 10. Hub and knuckle |
|--------------------------------------|---|--|

NOTE

For service points, refer to Basic Manual.

DRIVE SHAFT

REMOVAL AND INSTALLATION

Caution:

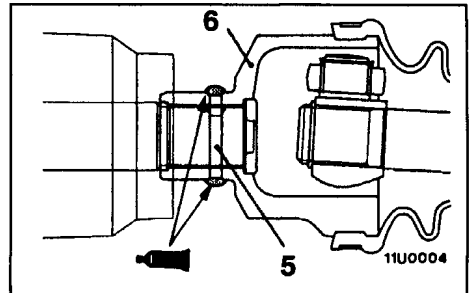
Do not strike the ABS rotors installed to the B.J. outer race of drive shaft against other parts when removing or installing the drive shaft. Otherwise the ABS rotors will be damaged.

Pre-removal Operation

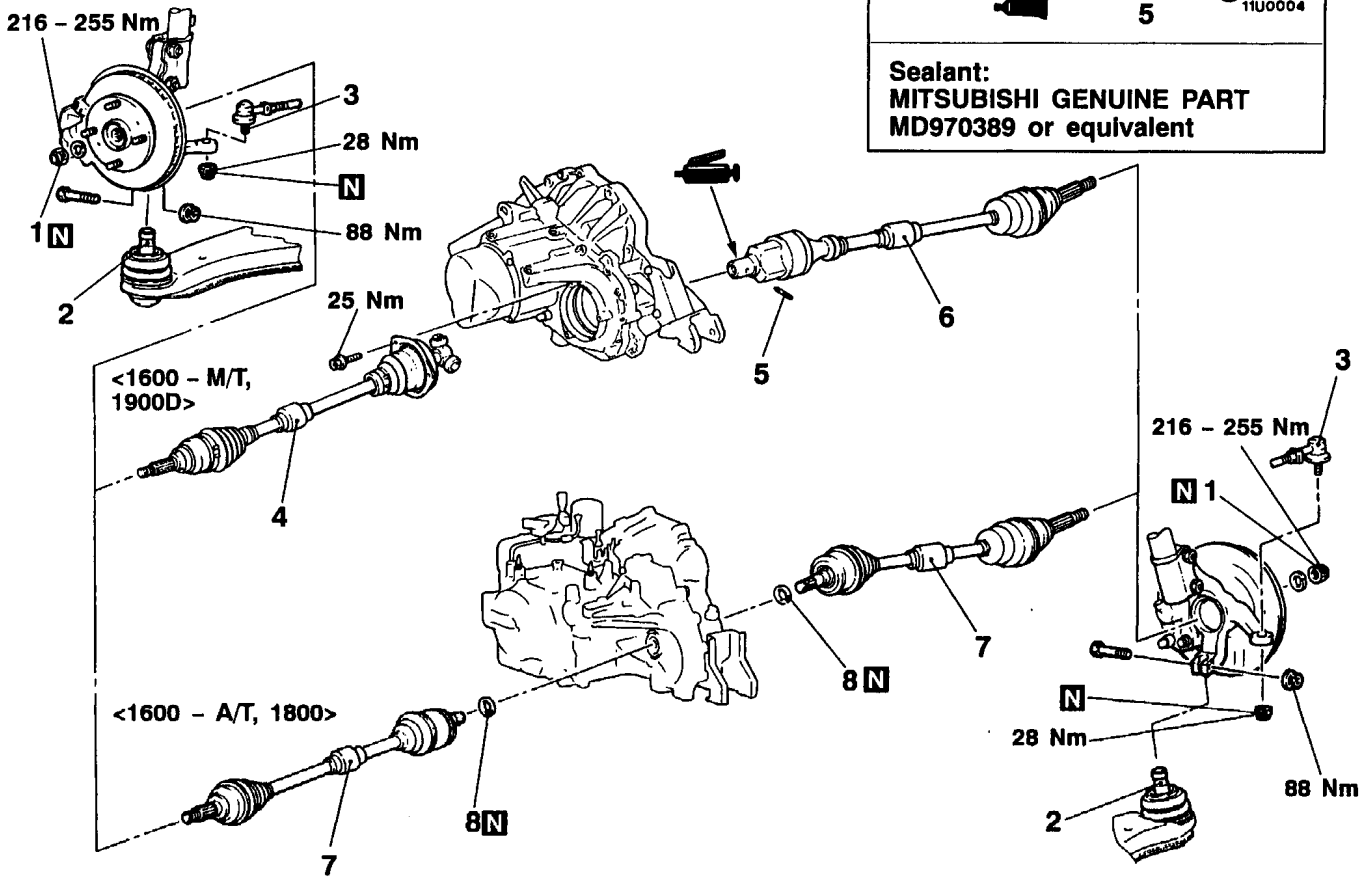
Brake hose Clamp, Speed Sensor Cable Connection, Stabilizer Link Connection Removal.

Post-Installation Operation

- Press the dust cover with a finger to check whether the dust cover is cracked or damaged.
- Brake hose Clamp, Speed Sensor Cable Connection Stabilizer Link Connection Installation.



Sealant:
MITSUBISHI GENUINE PART
 MD970389 or equivalent



AX0015BN

Removal steps

- ◀A▶ ▶B▶ 1. Drive shaft nut
- ◀B▶ 2. Lower arm ball joint connection
- ◀C▶ 3. Tie rod end connection
- ◀C▶ 4. Drive shaft L.H.
 <1600 - M/T, 1900D>
- ▶A▶ 5. Spring pin
 <1600 - M/T, 1900D>

- ◀C▶ ▶A▶ 6. Drive shaft R.H.
 <1600 - M/T, 1900D>
- ◀C▶ 7. Drive shaft <1600 - A/T, 1800>
- 8. Circlip <1600 - A/T, 1800>

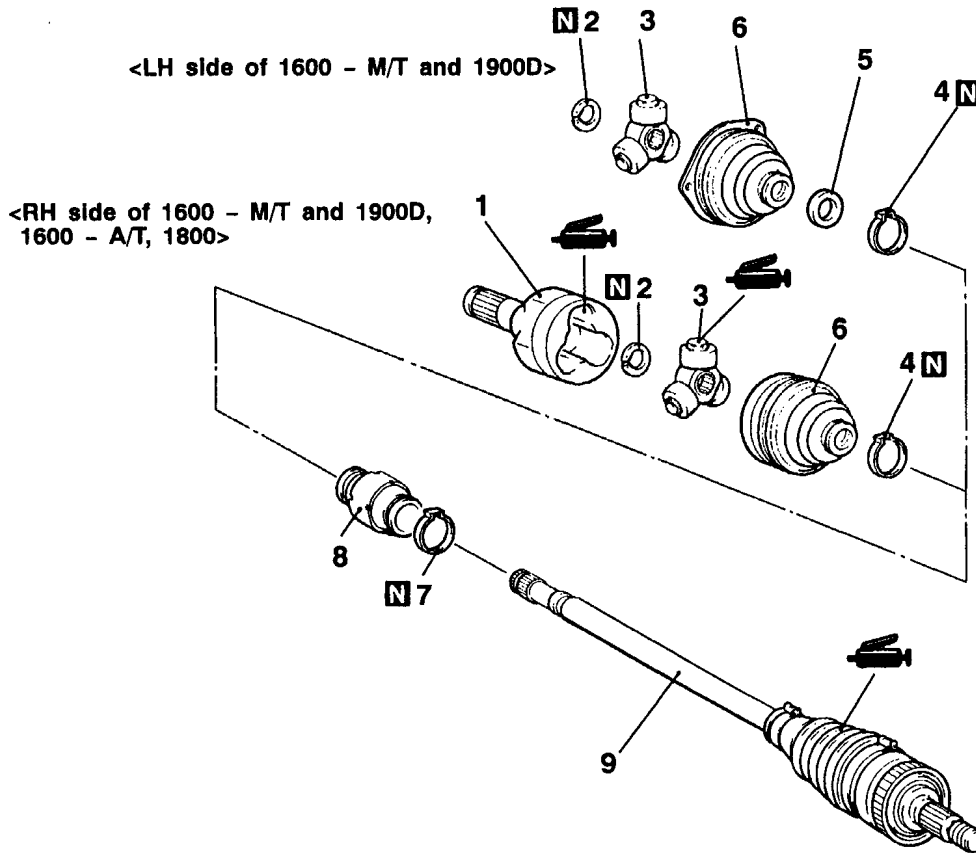
NOTE

For service point, refer to Basic Manual.

DISASSEMBLY AND REASSEMBLY

Caution

1. Never disassemble the B.J. assembly except when replacing the B.J. boot.
2. Be sure not to damage the rotor attached to the B.J. outer race.

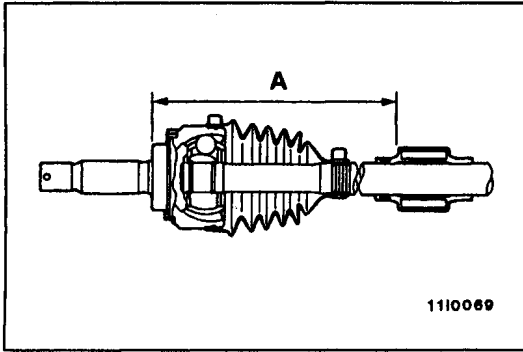


B11U0093

<p>T.J. boot repair kit <LH side of 1600 - M/T and 1900D></p>	<p>T.J. boot repair kit <RH side of 1600 - M/T and 1900D, 1600 - A/T, 1800></p>	<p>B.J. boot repair kit</p>

Disassembly steps

- | | |
|---|---|
| <p>◀A▶ ▶E◀ 1. T.J. case
 ▶A▶ ▶D◀ 2. Snap ring
 ▶A▶ ▶D◀ 3. Spider assembly
 ▶C◀ 4. T.J. boot band
 ▶B▶ ▶B◀ 5. Dust cover
 ▶B▶ ▶B◀ 6. T.J. boot</p> | <p>▶A◀ ▶A◀ 7. Damper band <1600, 1800>
 ▶C▶ ▶A◀ 8. Dynamic damper <1600, 1800>
 9. B.J. assembly
 10. B.J. boot band (small)
 11. B.J. boot band (large)
 12. B.J. boot</p> |
|---|---|



REASSEMBLY SERVICE POINTS

The assembly procedures for the drive shaft have been established. The other procedures are the same as before.

▶A◀ DYNAMIC DAMPER <1600, 1800>/DAMPER BAND <1600, 1800> INSTALLATION

Install the dynamic damper in the position shown in the illustration.

Items		A
1600 - M/T	L.H.	264 ± 3 mm
	R.H.	369 ± 3 mm
1600 - A/T, 1800	L.H.	191 ± 3 mm
	R.H.	371 ± 3 mm