

---

# GENERAL

## CONTENTS

<b>VEHICLE IDENTIFICATION .....</b>	<b>2</b>	<b>MAJOR SPECIFICATIONS .....</b>	<b>6</b>
Models .....	2	Hatchback .....	6
Model Code .....	4	Sedan .....	9
Chassis Number .....	5		

---

## VEHICLE IDENTIFICATION

## MODELS

## &lt;HATCHBACK&gt;

Model code		Engine model	Transmission model	Fuel supply system
DA1A	LNSEL6/R6	4G92 MPI (1,597 mL)	F5MR1 <5M/T>	MPI (Electronically Controlled Multi Point Fuel Injection)
	LNUEL6/R6			
	LNGEL6/R6		F4A41 <4A/T>	
	LRUEL6/R6			
	LRGEL6/R6			
DA2A	LNSCL6/R6	4G93 GDI (1,834 mL)	F5M42 <5M/T>	GDI (Gasoline Direct Injection)
	LNUCL6/R6			
	LNGCL6/R6			
	LNXCCL6/R6			
	LRUCL6/R6		F4A42 <INVECS-II 4A/T>	
	LRGCL6/R6			
	LRXCCL6/R6		F4A42 <INVECS-II 4A/T with Sports Mode>	
	LRUCL6C/R6C			
DA5A	LNSFL6/R6	F9Q1 (1,870 mL)	F5MV1 <5M/T>	DI-D (Direct Injection Diesel)
	LNUFL6/R6			
	LNXCFL6/R6			
	LNUVL6/R6	F9Q2 (1,870 mL)		
	LNGVL6/R6			
	LNXCVL6/R6			

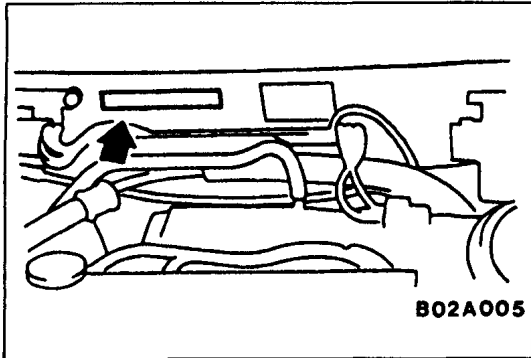
## &lt;SEDAN&gt;

Model code		Engine model	Transmission model	Fuel supply system
DA1A	SNSEL6/R6	4G92 MPI (1,597 mL)	F5MR1 <5M/T>	MPI (Electronically Controlled Multi Point Fuel Injection)
	SNUEL6/R6			
	SNGEL6/R6			
	SRUEL6/R6		F4A41 <4A/T>	
	SRGEL6/R6			
DA2A	SNSCL6/R6	4G93 GDI (1,834 mL)	F5M42 <5M/T>	GDI (Gasoline Direct Injection)
	SNUCL6/R6			
	SNGCL6/R6			
	SNXCL6/R6			
	SRUCL6/R6		F4A42 <INVECS-II 4A/T>	
	SRGCL6/R6			
	SRXCL6/R6			
	SRUCL6C/R6C		F4A42 <INVECS-II 4A/T with Sports Mode>	
DA5A	SNSFL6/R6	F9Q1 (1,870 mL)	F5MV1 <5M/T>	DI-D (Direct Injection Diesel)
	SNUFL6/R6			
	SNXFL6/R6			
	SNUVL6/R6	F9Q2 (1,870 mL)		
	SNGVL6/R6			
	SNXVL6/R6			

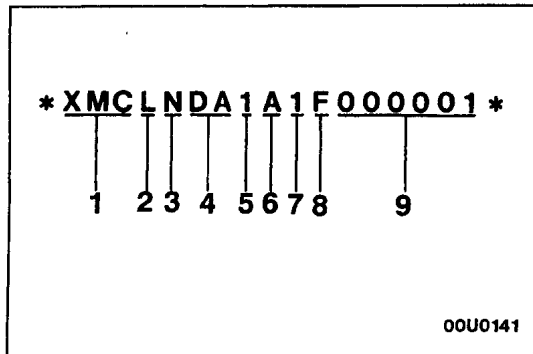
<b>DA</b>	<b>2</b>	<b>A</b>	<b>L</b>	<b>N</b>	<b>S</b>	<b>C</b>	<b>L</b>	<b>6</b>	<b>C</b>
1	2	3	4	5	6	7	8	9	10

**MODEL CODE**

No.	Items	Contents
1	Development	DA: MITSUBISHI CARISMA
2	Engine type	1: 1,597 mL petrol engine 2: 1,834 mL petrol engine 5: 1,870 mL diesel engine
3	Sort	A: Passenger car
4	Body style	A: 4-door sedan L: 5-door hatchback
5	Transmission type	N: 5-speed manual transmission R: 4-speed automatic transmission
6	Trim level	G: Sport S: Classic U: Comfort X: Elegance
7	Specification engine feature	C: GDI E: MPI F: F9Q1 DI-D (Medium Performance) V: F9Q2 DI-D (High Performance)
8	Steering wheel location	L: Left hand R: Right hand
9	Destination	6: For Europe
10	Other	C: INVECS-II 4A/T with Sports Mode

**CHASSIS NUMBER**

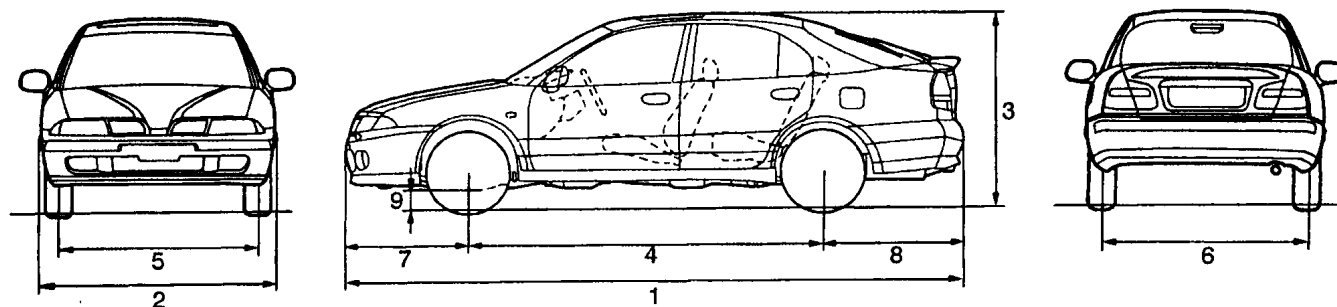
The chassis number is stamped on the toeboard inside the engine compartment.



No.	Items		Contents
1	Steering wheel location	XMC	Left hand drive
		XMD	Right hand drive
2	Body style	S	4-door sedan
		L	5-door hatchback
3	Transmission type	N	5-speed manual transmission
		R	4-speed automatic transmission
4	Vehicle line	DA	CARISMA
5	Development order	1	4G92: 1,597 mL petrol engine
		2	4G93: 1,834 mL petrol engine
		5	F9Q1 or F9Q2: 1,870 mL diesel engine
6	Sort	A	Passenger car
7	Model year	1	2001
8	Factory code	F	Netherlands Car B.V.
9	Serial number	–	–

## MAJOR SPECIFICATIONS

### HATCHBACK



AP01A044

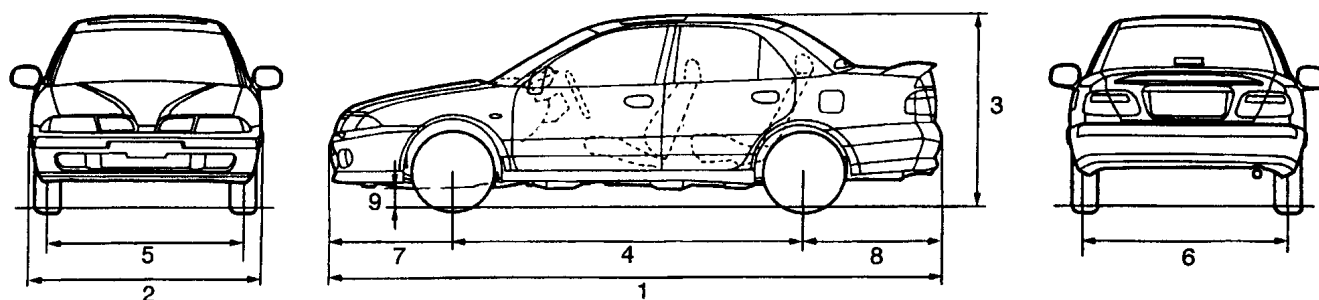
Items		DA1A LNSEL6, LNSER6	DA1A LNUEL6, LNUER6, LNGEL6, LNGER6	DA1A LRUEL6, LRUER6, LRGEL6, LRGER6
Vehicle dimensions mm	Overall length	1 4,475	4,475	4,475
	Overall width	2 1,710	1,710	1,710
	Overall height (unladen)	3 1,405	1,405	1,405
	Wheelbase	4 2,550	2,550	2,550
	Track-front	5 1,475	1,475	1,475
	Track-rear	6 1,470	1,470	1,470
	Overhang-front	7 905	905	905
	Overhang-rear	8 1,020	1,020	1,020
	Ground clear- ance (unladen)	9 155	155	150
Vehicle weight kg	Kerb weight	1,175	1,180	1,210
	Max. gross vehicle weight rating	1,685	1,695	1,725
	Max. axle weight rating-front	940	940	940
	Max. axle weight rating-rear	865	865	865
Seating capacity		5		
Engine	Model No.	4G92		
	Total displacement mL	1,597		
Transmis- sion	Model No.	F5MR1		F4A41
	Type	5 speed-manual		4 speed-automatic
Fuel sys- tem	Fuel supply system	Electronic control multipoint fuel injection		

Items			DA2A LNSC L6, LNSC R6	DA2A LNUC L6, LNUC R6	DA2A LNGC L6, LNGC R6	DA2A LNXC L6, LNXC R6	DA2A LRUC L6, LRUC R6 LRUC L6C, LRUC R6C	DA2A LRGC L6, LRGC R6	DA2A LRXC L6, LRXC R6
Vehicle dimensions mm	Overall length	1	4,475	4,475	4,475	4,475	4,475	4,475	4,475
	Overall width	2	1,710	1,710	1,710	1,710	1,710	1,710	1,710
	Overall height (unladen)	3	1,405	1,405	1,405	1,405	1,405	1,405	1,405
	Wheelbase	4	2,550	2,550	2,550	2,550	2,550	2,550	2,550
	Track-front	5	1,475	1,475	1,475	1,475	1,475	1,475	1,475
	Track-rear	6	1,470	1,470	1,470	1,470	1,470	1,470	1,470
	Overhang-front	7	905	905	905	905	905	905	905
	Overhang-rear	8	1,020	1,020	1,020	1,020	1,020	1,020	1,020
	Ground clear- ance (unladen)	9	150	150	150	150	150	150	150
Vehicle weight kg	Kerb weight		1,230	1,235	1,235	1,260	1,255	1,255	1,280
	Max. gross vehicle weight rating		1,735	1,745	1,745	1,750	1,765	1,765	1,770
	Max. axle weight rating-front		940	940	940	940	940	940	940
	Max. axle weight rating-rear		875	875	875	875	875	875	875
Seating capacity			5						
Engine	Model No.	4G93							
	Total displacement mL	1,834							
Transmis- sion	Model No.	F5M42					F4A42		
	Type	5 speed-manual					4 speed-automatic		
Fuel sys- tem	Fuel supply system	Gasoline direct injection							

Items			DA5A LNSFL6, LNSFR6	DA5A LNUFL6, LNUFR6	DA5A LNXFL6, LNXFR6	DA5A LNUVL6, LNUVR6	DA5A LNGVL6, LNGVR6	DA5A LNXVL6, LNXVR6
Vehicle dimensions mm	Overall length	1	4,475	4,475	4,475	4,475	4,475	4,475
	Overall width	2	1,710	1,710	1,710	1,710	1,710	1,710
	Overall height (unladen)	3	1,405	1,405	1,405	1,405	1,405	1,405
	Wheelbase	4	2,550	2,550	2,550	2,550	2,550	2,550
	Track-front	5	1,475	1,475	1,475	1,475	1,475	1,475
	Track-rear	6	1,470	1,470	1,470	1,470	1,470	1,470
	Overhang-front	7	905	905	905	905	905	905
	Overhang-rear	8	1,020	1,020	1,020	1,020	1,020	1,020
	Ground clear- ance (unladen)	9	145	145	145	145	145	145
Vehicle weight kg	Kerb weight		1,280	1,285	1,310	1,285	1,285	1,310
	Max. gross vehicle weight rating		1,785	1,795	1,800	1,795	1,795	1,800
	Max. axle weight rating-front		940	940	940	940	940	940
	Max. axle weight rating-rear		870	870	870	870	870	870
Seating capacity			5					
Engine	Model No.	F9Q1				F9Q2		
	Total displacement mL	1,870						
Transmis- sion	Model No.	F5MV1						
	Type	5 speed-manual						
Fuel sys- tem	Fuel supply system	Direct Injection Diesel						



## SEDAN



BP01A044

Items			DA1A SNSSEL6, SNSER6	DA1A SNUEL6, SNUER6, SNGEL6, SNGER6	DA1A SRUEL6, SRUER6, SRGEL6, SRGER6
Vehicle dimensions mm	Overall length	1	4,475	4,475	4,475
	Overall width	2	1,710	1,710	1,710
	Overall height (unladen)	3	1,405	1,405	1,405
	Wheelbase	4	2,550	2,550	2,550
	Track-front	5	1,475	1,475	1,475
	Track-rear	6	1,470	1,470	1,470
	Overhang-front	7	905	905	905
	Overhang-rear	8	1,020	1,020	1,020
	Ground clear- ance (unladen)	9	155	155	150
Vehicle weight kg	Kerb weight		1,180	1,185	1,215
	Max. gross vehicle weight rating		1,685	1,695	1,725
	Max. axle weight rating-front		945	945	945
	Max. axle weight rating-rear		875	875	875
Seating capacity			5		
Engine	Model No.		4G92		
	Total displacement mL		1,597		
Transmis- sion	Model No.		F5MR1		F4A41
	Type		5 speed-manual		4 speed-automatic
Fuel sys- tem	Fuel supply system		Electronic control multipoint fuel injection		

Items			DA2A SNSC L6, SNSC R6	DA2A SNUC L6, SNUC R6	DA2A SNGC L6, SNGC R6	DA2A SNXC L6, SNXC R6	DA2A SRUC L6, SRUC R6, SRUC L6C, SRUC R6C	DA2A SRGC L6, SRGC R6	DA2A SRXC L6, SRXC R6
Vehicle dimensions mm	Overall length	1	4,475	4,475	4,475	4,475	4,475	4,475	4,475
	Overall width	2	1,710	1,710	1,710	1,710	1,710	1,710	1,710
	Overall height (unladen)	3	1,405	1,405	1,405	1,405	1,405	1,405	1,405
	Wheelbase	4	2,550	2,550	2,550	2,550	2,550	2,550	2,550
	Track-front	5	1,475	1,475	1,475	1,475	1,475	1,475	1,475
	Track-rear	6	1,470	1,470	1,470	1,470	1,470	1,470	1,470
	Overhang-front	7	905	905	905	905	905	905	905
	Overhang-rear	8	1,020	1,020	1,020	1,020	1,020	1,020	1,020
	Ground clear- ance (unladen)	9	150	150	150	150	150	150	150
Vehicle weight kg	Kerb weight		1,210	1,215	1,215	1,240	1,235	1,235	1,260
	Max. gross vehicle weight rating		1,715	1,725	1,725	1,730	1,745	1,745	1,750
	Max. axle weight rating-front		945	945	945	945	945	945	945
	Max. axle weight rating-rear		875	875	875	875	875	875	875
Seating capacity			5						
Engine	Model No.	4G93							
	Total displacement mL	1,834							
Transmis- sion	Model No.	F5M42					F4A42		
	Type	5 speed-manual					4 speed-automatic		
Fuel sys- tem	Fuel supply system	Gasoline direct injection							

Items			DA5A SNSFL6, SNSFR6	DA5A SNUFL6, SNUFR6	DA5A SNXFL6, SNXFR6	DA5A SNUVL6, SNUVR6	DA5A SNGVL6, SNGVR6	DA5A SNXVL6, SNXVR6
Vehicle dimensions mm	Overall length	1	4,475	4,475	4,475	4,475	4,475	4,475
	Overall width	2	1,710	1,710	1,710	1,710	1,710	1,710
	Overall height (unladen)	3	1,405	1,405	1,405	1,405	1,405	1,405
	Wheelbase	4	2,550	2,550	2,550	2,550	2,550	2,550
	Track-front	5	1,475	1,475	1,475	1,475	1,475	1,475
	Track-rear	6	1,470	1,470	1,470	1,470	1,470	1,470
	Overhang-front	7	905	905	905	905	905	905
	Overhang-rear	8	1,020	1,020	1,020	1,020	1,020	1,020
	Ground clear- ance (unladen)	9	145	145	145	145	145	145
Vehicle weight kg	Kerb weight		1,260	1,265	1,290	1,265	1,265	1,290
	Max. gross vehicle weight rating		1,765	1,775	1,780	1,775	1,775	1,780
	Max. axle weight rating-front		945	945	945	945	945	945
	Max. axle weight rating-rear		875	875	875	875	875	875
Seating capacity			5					
Engine	Model No.	F9Q1				F9Q2		
	Total displacement mL	1,870						
Transmis- sion	Model No.	F5MV1						
	Type	5 speed-manual						
Fuel sys- tem	Fuel supply system	Direct Injection Diesel						