

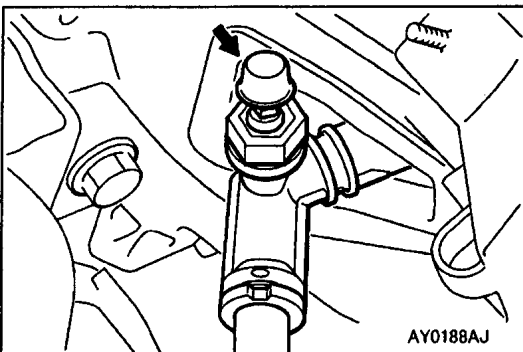
GROUP 21

CLUTCH

GENERAL

OUTLINE OF CHANGE

- The following service procedures have been added due to the introduction of the F5MV1 type transmission.
- “NOTE” has been added in the clutch pedal service procedure.
- The clutch switch inspection has been added due to the introduction of the F5MV1 type transmission.
- The clutch control has been changed due to the introduction of the F5MV1 type transmission.



ON-VEHICLE SERVICE <F9Q>

BLEEDING

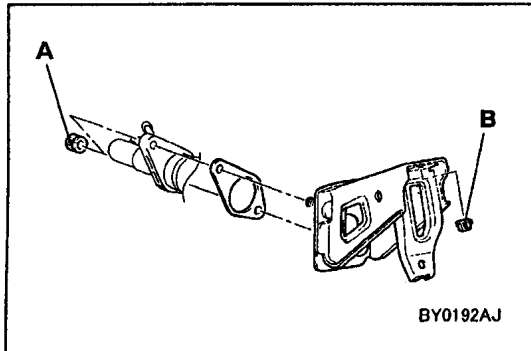
Specified brake fluid: DOT 3 or DOT 4

Caution

Avoid using a mixture of the specified fluid and other fluid, otherwise the clutch fluid will deteriorate resulting clutch fault.

CLUTCH PEDAL

The descriptions other than the installation service points below are the same as before.



INSTALLATION SERVICE POINT

►A◄ MASTER CYLINDER MEMBER ASSEMBLY

Tighten the clutch master cylinder mounting nuts (A), and then the master cylinder member assembly mounting bolts (B).

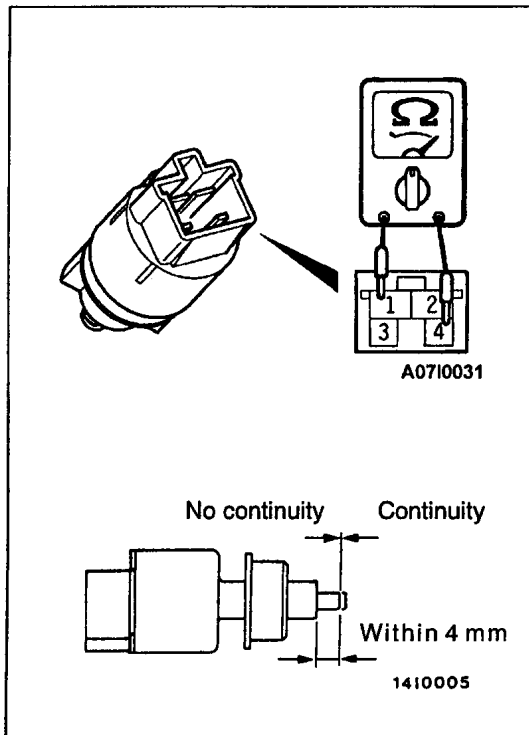
NOTE

The master cylinder member assembly can not be positioned correctly if the pedal mounting bolts (B) are tightened first as the their holes are oblong holes.

INSPECTION <F9Q>

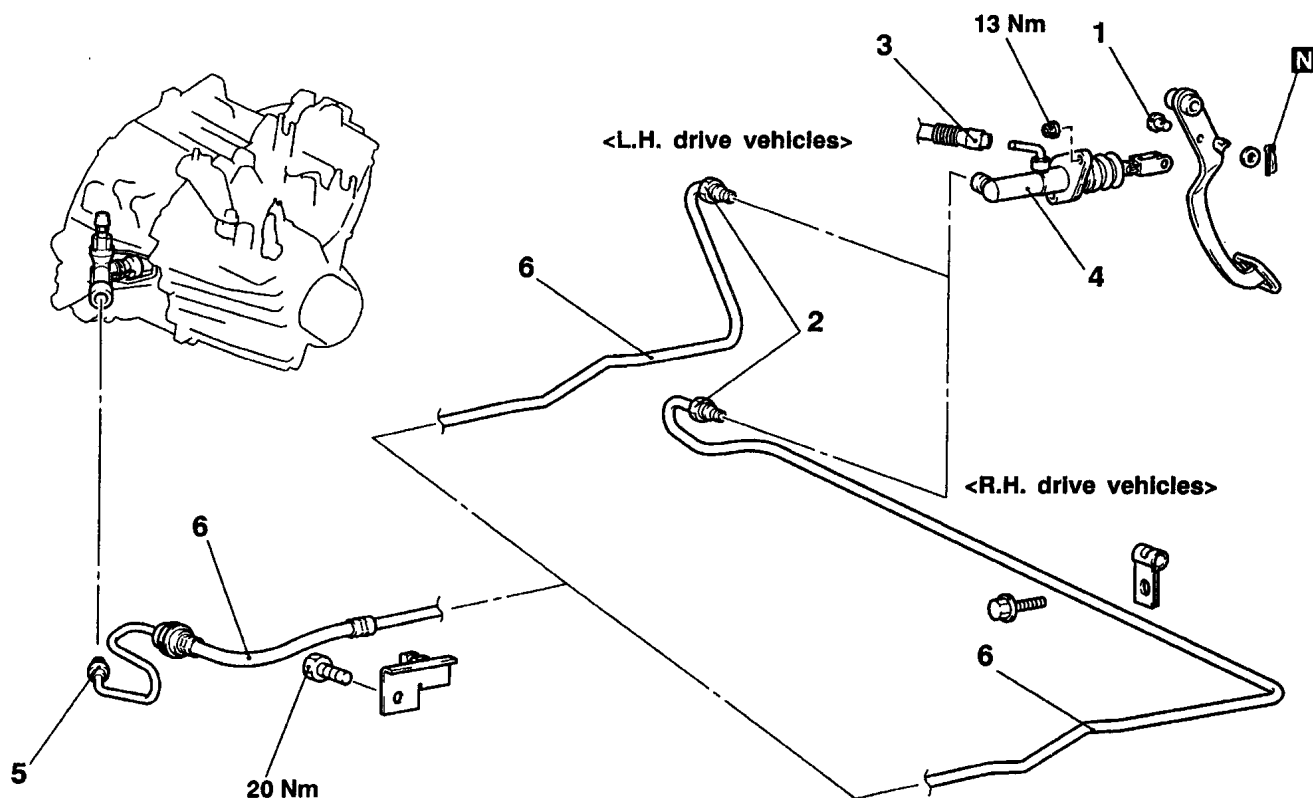
CLUTCH SWITCH CHECK

1. Connect an ohmmeter to the clutch switch connector terminals.
2. Continuity should not exist when the plunger is pushed within 4 mm from the outer case end. Then, if the plunger is released, continuity will exist again.



CLUTCH CONTROL <F9Q>**REMOVAL AND INSTALLATION****Pre-removal Operation**
Clutch Fluid Draining**Post-Installation Operation**

- Clutch Fluid Supplying
- Clutch Line Bleeding (Refer to P.21-1)
- Clutch Pedal Adjustment



AY0194AJ

Clutch master cylinder removal steps

- Battery and battery tray
- Intercooler pipe (Refer to GROUP 15 – Intercooler)
- Air cleaner
- Transmission mount and transmission mount bracket (Refer to GROUP 22 – Manual Transmission)
- Fuel filter
- 1. Clevis pin

- 2. Clutch tube connection (master cylinder side)
- 3. Reservoir hose connection
- 4. Clutch master cylinder

Clutch line removal steps

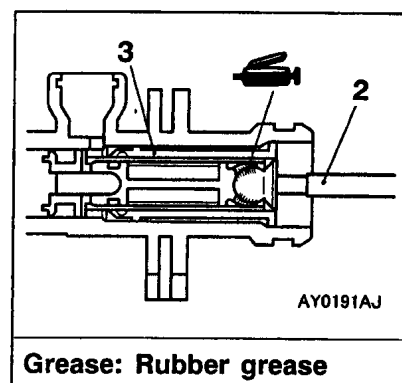
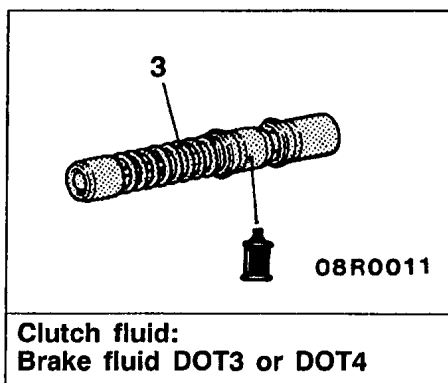
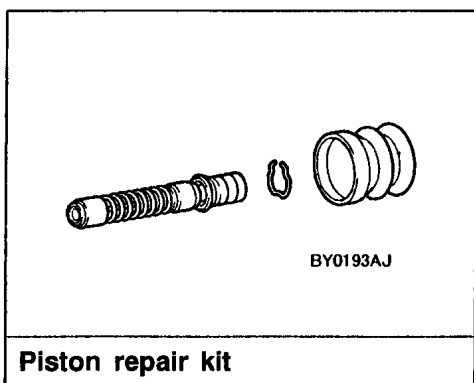
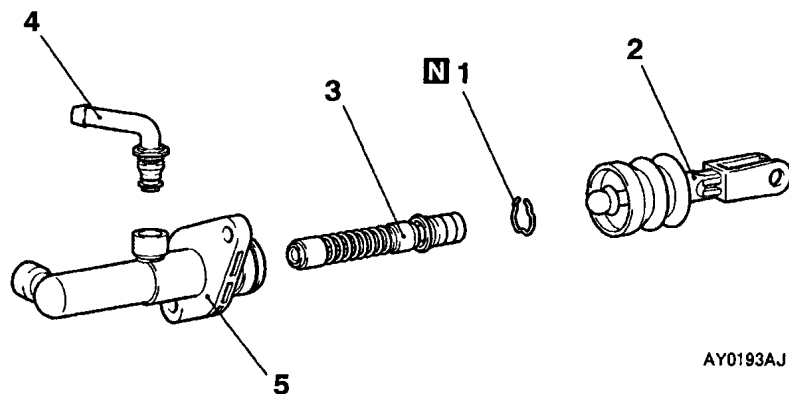
- 5. Clutch tube connection (transmission side)
- 6. Clutch tube assembly

DISASSEMBLY AND REASSEMBLY

CLUTCH MASTER CYLINDER

Caution:

Do not disassemble piston assembly. The piston assembly can not be reassembled.

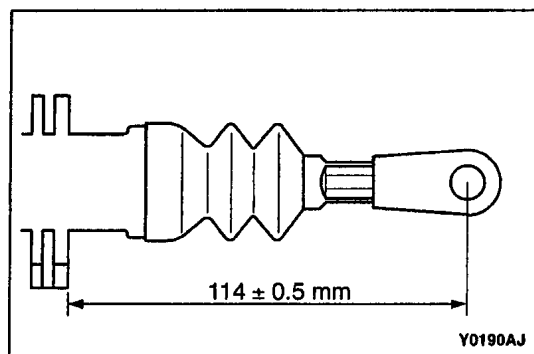


Disassembly steps



1. Piston stopper ring
2. Push rod assembly
3. Piston assembly

4. Connector
5. Clutch master cylinder body



INSTALLATION SERVICE POINT

◀A▶ PUSH ROD ASSEMBLY INSTALLATION

Set the length of the push rod assembly to the shown dimension to make the adjustment of the clutch pedal easier.